

PART NUMBER: T07RBS

PRODUCT: Rear bumper with Skid plate

APPLICATION: 07-16 Tundra

Parts Included:	Qty
Rear bumper w/ skid Plate	1
Frame Brackets	2
Hardware Pack:	1
1/2" x 1 1/2" Hex bolts	6
1/2" Hex nuts	6
1/2" Flat washers	14
1/2" x 1 3/4" hex bolt	2
1/2" nuts	2

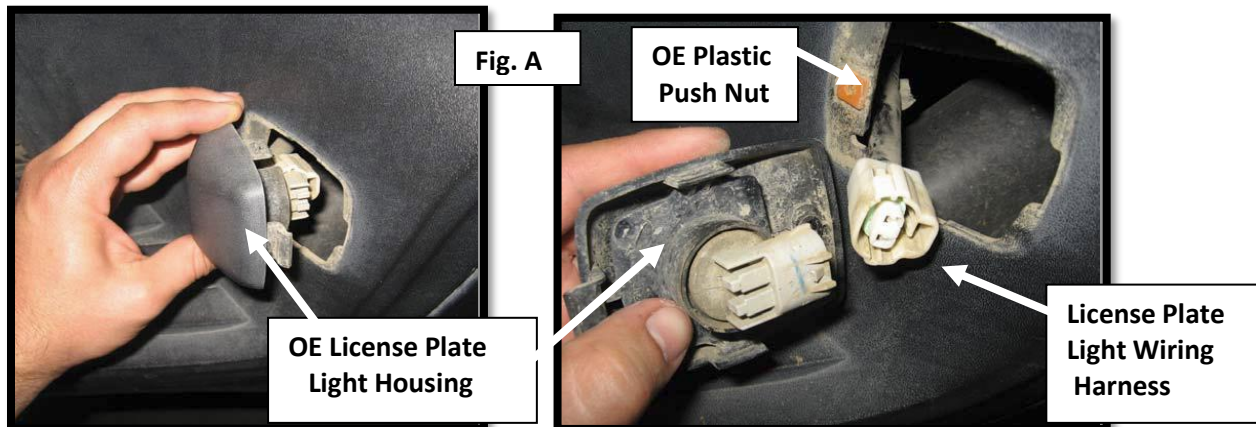


INSTALLATION:

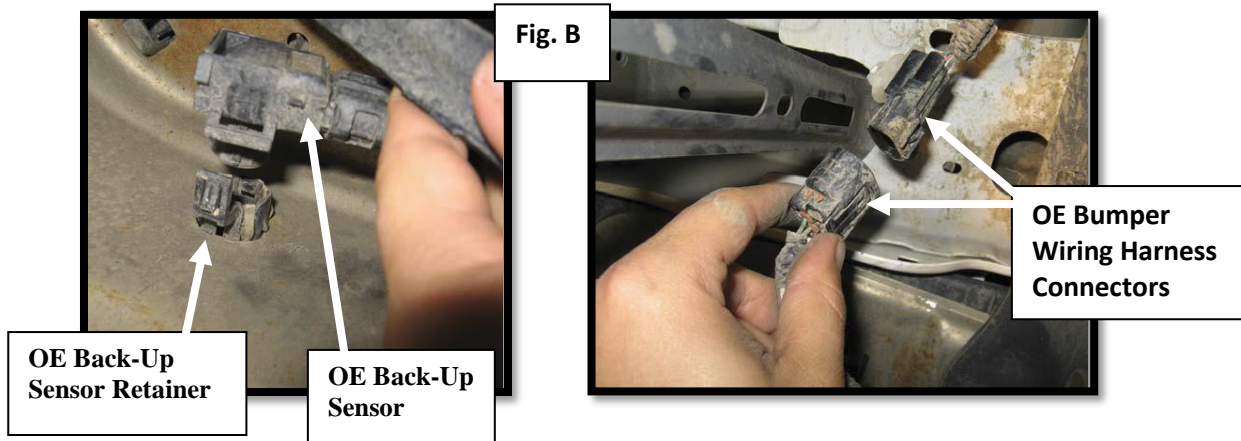
Step 1: Remove the spare tire from the vehicle and set aside. It will aid in the removal of the **OE** rear Bumper.

Step 2: Unplug the lights and the backup sensors from the **OE** rear bumper, if so equipped. (Fig A)

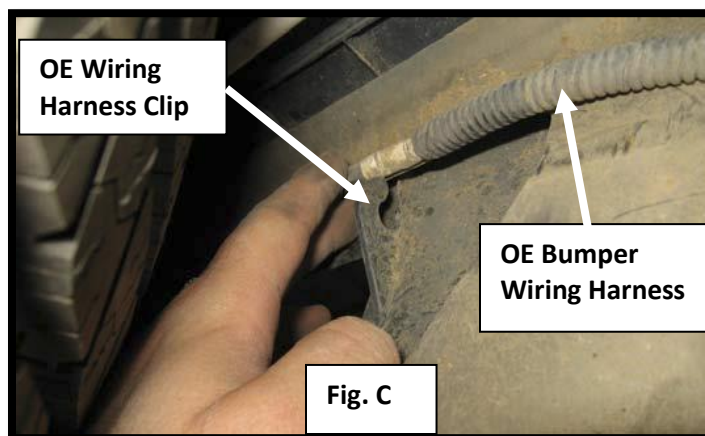
Step 3: Remove the license plate lights from the **OE** rear bumper. Remove the (1) screw And gently pry the light housing out. (Fig A)



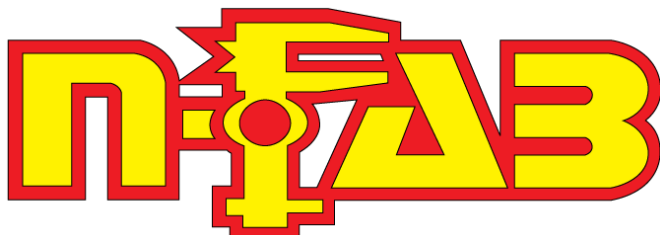
Step 4: Carefully remove the back-up sensors from the rear bumper, if so equipped. Disconnect the bumper wiring harness. (Fig B)



Step 5: Unclip the wiring harness from the (2) clips behind the license plate on the backside of the rear bumper. (Fig C)



Step 6: Unbolt and remove the license plate and plastic retainer from the OE rear bumper.

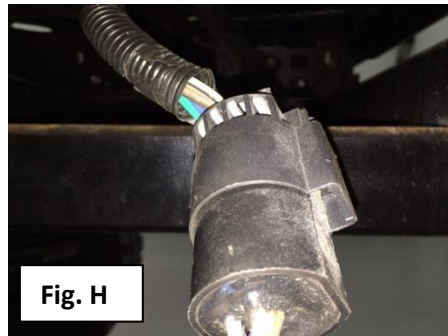


PART NUMBER: T07RBS

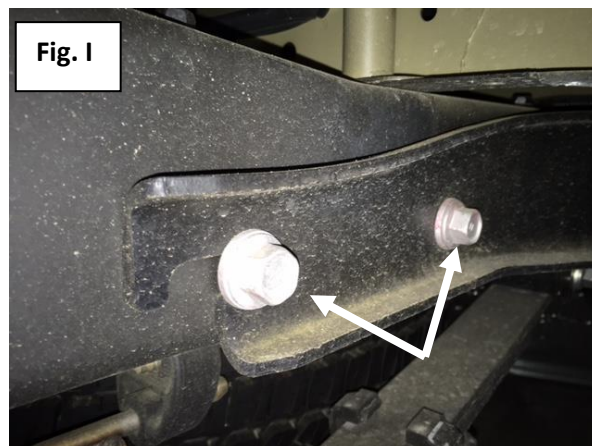
PRODUCT: Rear bumper with
Skid plate

APPLICATION: 07-16 Tundra

Step 7: Remove the OE tow plug and secure out of the way. (Fig H)



Step 8: On both frame rails remove the (2 per side) OE bolts from the frame that attaches the rear part of the hitch. **Note:** *The hitch will not be re-installed with this application.* (Fig. I) Some of the OE bolts will be re-used in the installation.



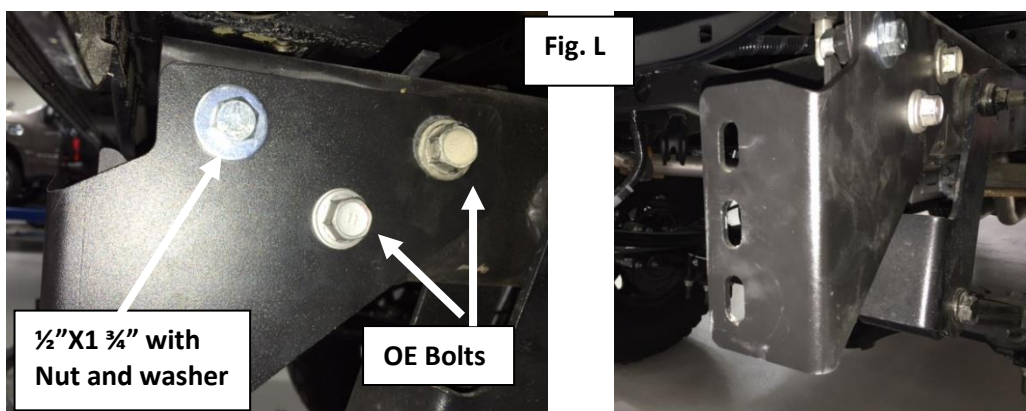
Step 9: Remove the 4 OE (both sides) bolts from the frame that attaches the front part of the hitch. (Fig. J)

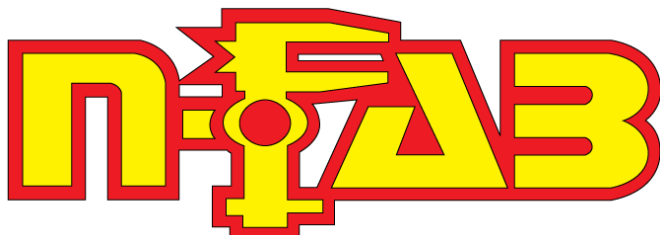


Step 10: With some help carefully **Remove** and set aside. (Fig.K)



Step 11: Using the factory hardware and the supplied $\frac{1}{2}$ " x $1 \frac{3}{4}$ " Hex head bolt nut and washer install the (2) frame to bumper mounts. Do not fully tighten. (Fig L)



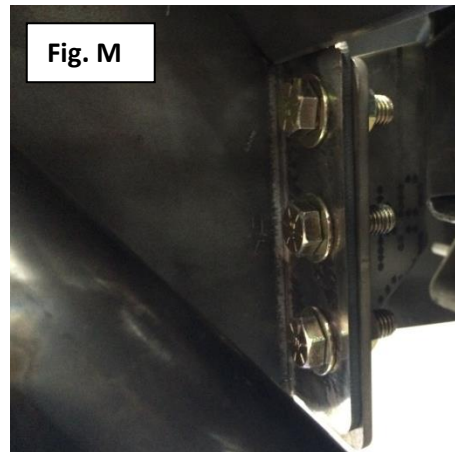


PART NUMBER: T07RBS

PRODUCT: Rear bumper with
Skid plate

APPLICATION: 07-16 Tundra

Step 12: Using the supplied $\frac{1}{2}$ "x1 $\frac{1}{2}$ " Hex bolts, nuts and washers, install the New bumper to the frame bracket mounts and hand tighten. (Fig. M)



Step 13: Align brackets and bumper to desired position and fully tighten hardware. **Note:** An aftermarket license plate light is recommended.

