

PART NUMBER: N16100CC,
N16100CC-6, N1678CC,
N164RKRCC
PRODUCT: STEPS

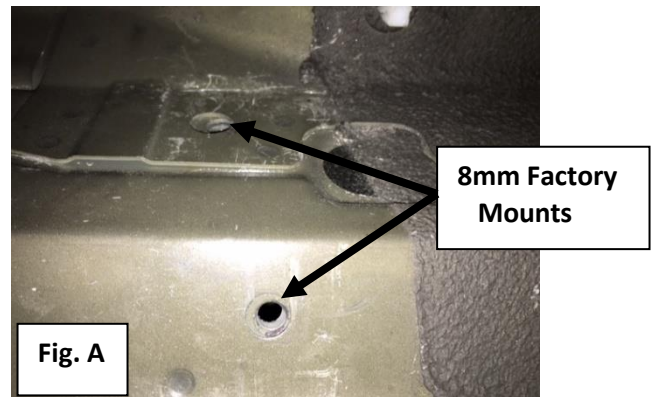
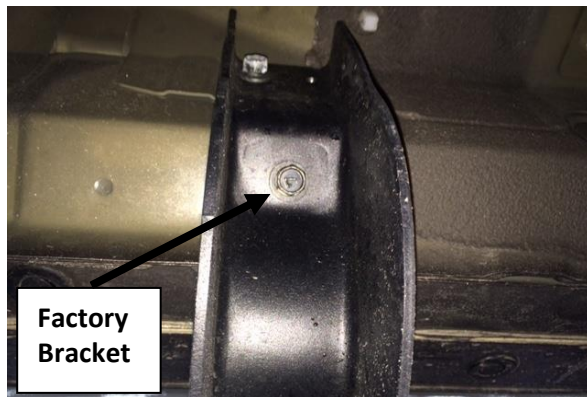
APPLICATION: 16-C Nissan Titan

Parts Included:	Qty
Driver Side Step	1
Passenger Side Step	1
Hardware Pack	1
M8 x 30mm Hex cap with inner grated washer	12

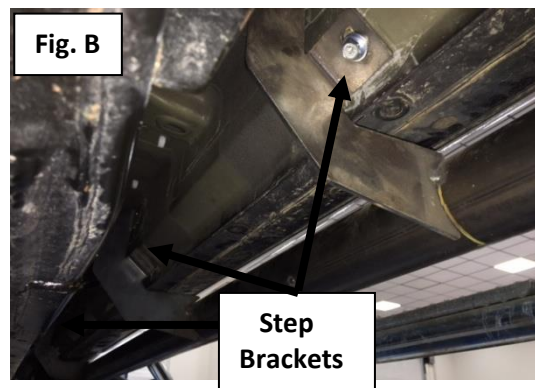


INSTRUCTIONS:

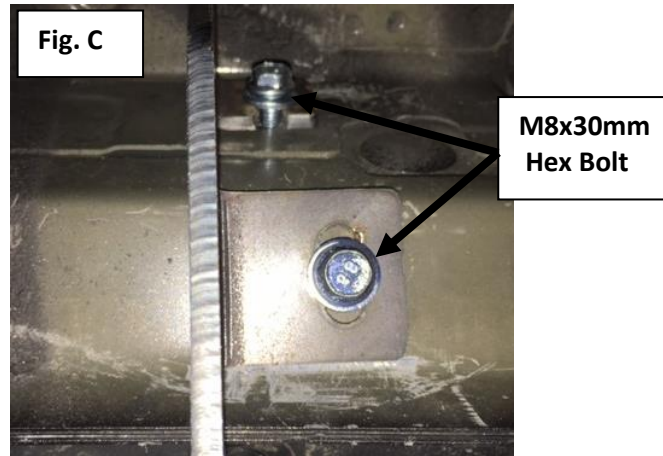
Step 1: Remove factory running bars if equipped and discard. You will see the 8mm threaded mounts in the body. (Fig.A)



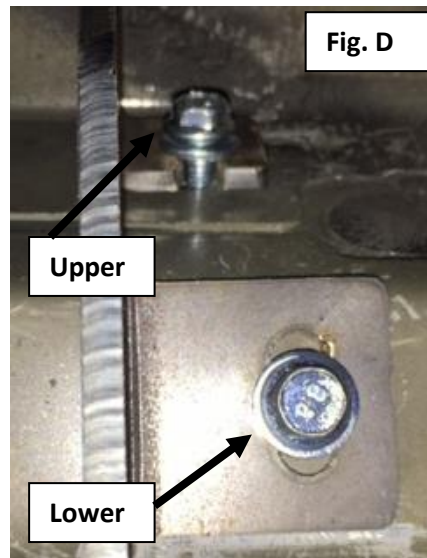
Step 2: Starting with the driver's side, lift step up into position aligning the step bracket with the 8mm OE mounts. (Fig. B)



Step 3: Install using the supplied M8x30mm Hex bolt and hand tighten at this time. **(Fig. C)**



Step 4: After final adjustment, tighten all hardware starting with the three lower bolts and then finish with the upper bolts. **(Fig. D)**



Step 5: Repeat steps 2-4 with the passenger side. **NOTE: Periodically check all hardware for tightness to insure longevity and safety of your steps.**