



PART NUMBER: J0746, J1246

PRODUCT: Nerf step

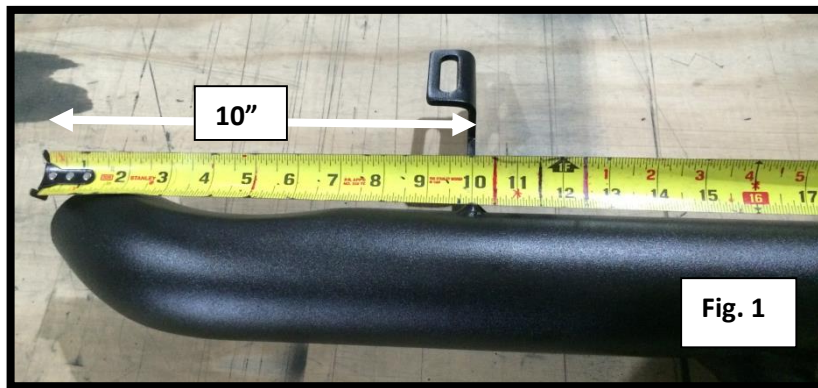
APPLICATION: 07-15 Jeep JK

PARTS INCLUDED:	QTY
Driver Side Step	1
Passenger Side Step	1
<b>HARDWARE PACK:</b>	<b>1</b>
5/16" speed clips	12
5/16" flat washers	12
5/16"x 1"	12



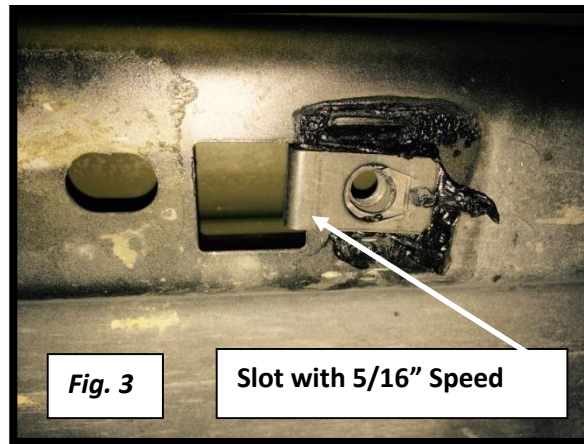
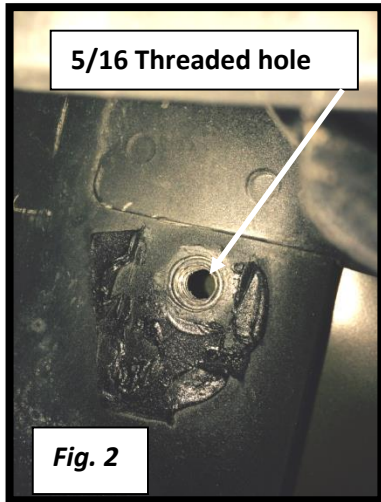
**CAREFULLY READ EACH STEP BEFORE ATTEMPTING TO INSTALL**

**Step 1:** Identify Driver and Passenger side Nerf-step. **NOTE:** *The Bracket that measures 10" from the tip of the step will go towards the front of the vehicle.* (See *figure 1.*)



**Step 2:** Depending on your cab model, you will have to identify which hardware you will have to use for the upper mounts on the underside of the body. There will either be existing 5/16" threaded holes for the 5/16 hex head bolts or open slots for the 5/16" speed clips and 5/16"x1" Hex bolts. (See *fig. 2 and fig.3.*)

**Step 3.** If your model requires the 5/16 speed clips, go ahead and install at this time. (See *Fig. 3.*)



**Step. 4** Starting with the passenger side, carefully raise bar up to the pinch weld of the body and align the pinch weld tabs with the Factory mounting holes. Loosely install the 5/16" Hex bolts, washers & nuts. Do NOT fasten down tightly, as you may need to lightly adjust the bar upon applying remaining locations. **Note: Some models may require the drilling out of additional 5/16 mounting holes in each pinch weld tab location.**

**Step. 5** Now you may fasten the upper [underbody] mounts with the supplied 5/16" x 1" Hex bolts or 5/16" x 1" Hex bolts through the 5/16" Speed clips. Loosely fasten, as well.

**Step. 6** Once the step is aligned properly and all locations have been loosely applied, tighten ALL hardware starting with the 5/16" Hex bolts in the pinch weld. Then proceed with the hardware on the underside upper mounts.

**Step. 7** Repeat steps 1-6 for Driver side.