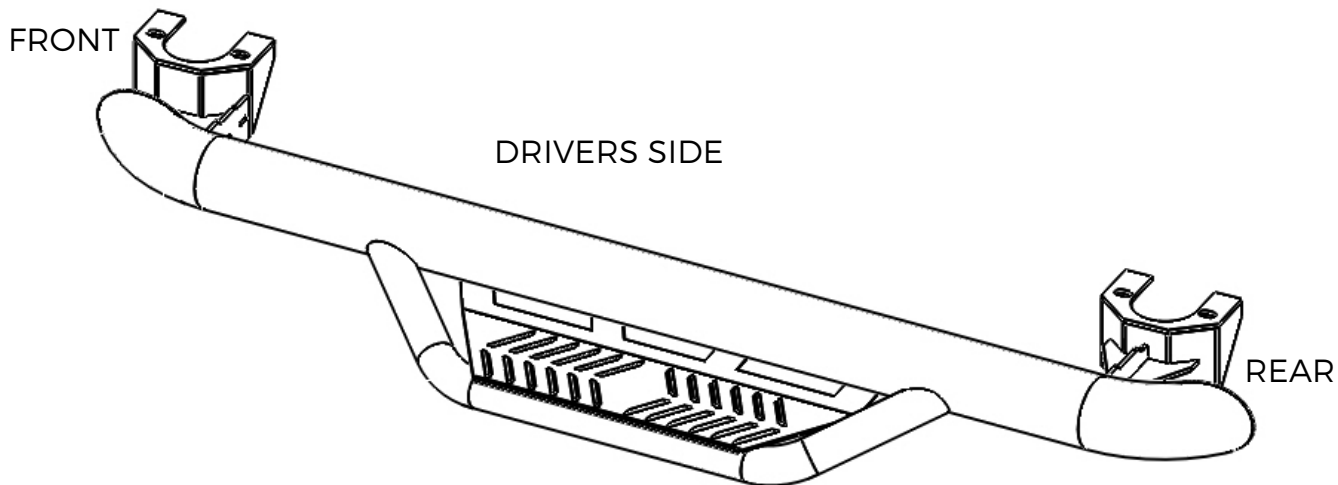


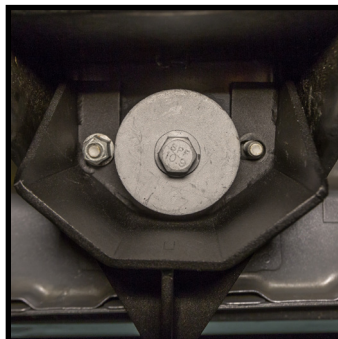
# Installation Instructions: N-Fab Podium Nerf-Steps

HPJ0746-TX / HPJ0746-SS

JEEP  
2007-2016  
WRANGLER JK, 2-DOOR

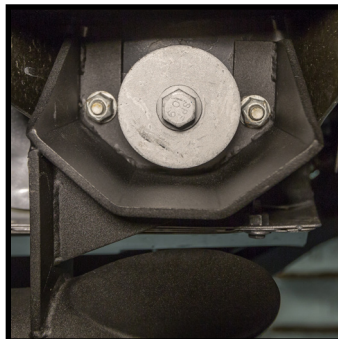
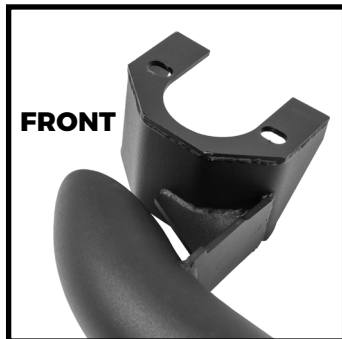


**STEP 1:**  
Identify the driver and passenger bars. The rear brace has two triangle shape support brackets while the front brace has one triangle shape support bracket. See the two photos here for the difference.



**STEP 4:**  
Carefully place step into place. Place mounting cup over the body mount washer. Slide upward over the studs. Best to have a assistant to lift and hold board in place.

**STEP 2:**  
Each mounting bracket consist of 2 mounting holes. It mounts to the factory body mount.



**STEP 5:**  
Hand tighten all OE nuts to the studs

**STEP 3:**  
On the body mount remove the 2 nuts on either side of the mount.



**STEP 6:**  
Begin tightening nuts in a alternating pattern. **Avoid using power or air tools.** Tighten to 40ft lbs torque to secure the board to the Jeep. Repeat the same procedure to the other side.