

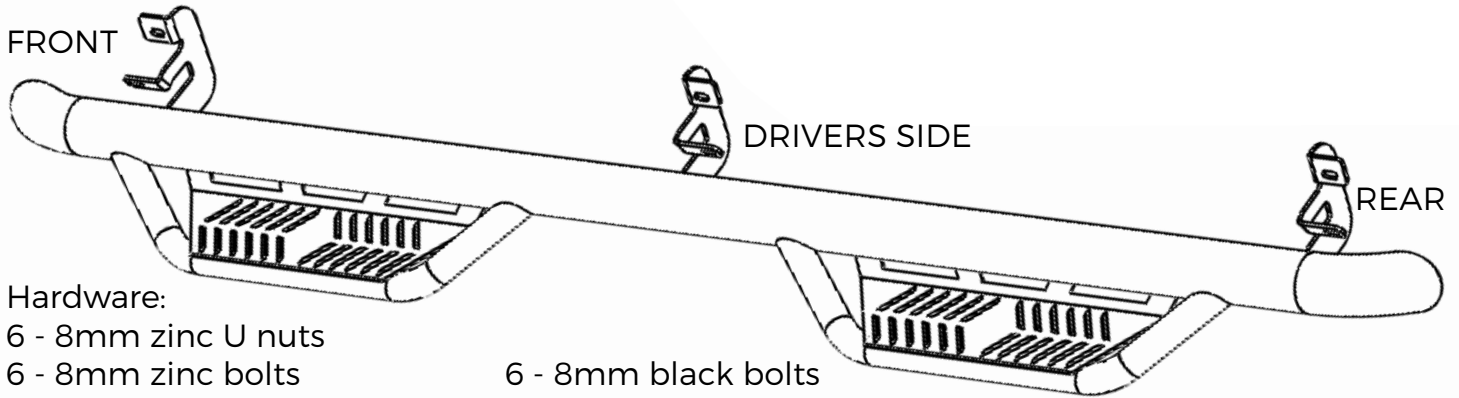


# Installation Instructions:

## N-Fab Podium Nerf-Steps

HPD1584CC-TX / HPD1584CC-SS

RAM  
2015-2016  
1500-4500 CREW CAB

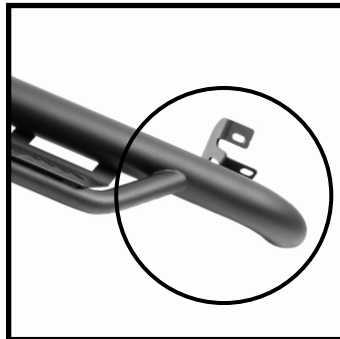


**Hardware:**

- 6 - 8mm zinc U nuts
- 6 - 8mm zinc bolts
- 6 - 8mm zinc lock washers
- 12 - 8mm zinc washers
- 6 - 8mm black bolts
- 6 - 8mm black washers
- 6 - 8mm Nyloc nuts

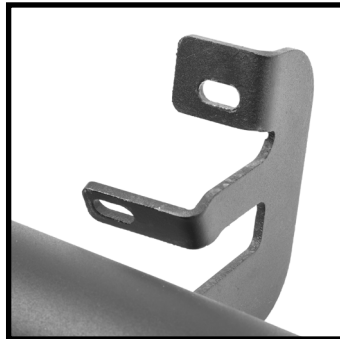
**STEP 1:**

Identify the driver and passenger bars. The rear bracket is closer to the end of the bar. Use this to determine each side.



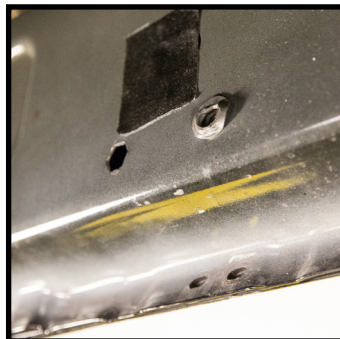
**STEP 2:**

Each mounting bracket consist of 2 mounting holes. The upper hole mounts to the body of the truck and the lower hole to the pinch weld.



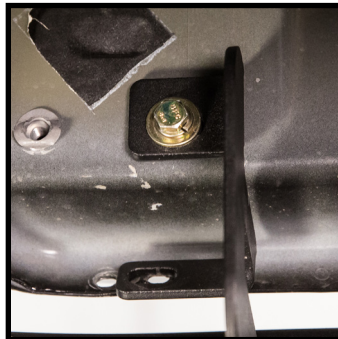
**STEP 3:**

Remove OE boards if equipped then locate mounting holes. In some cases there are threaded inserts installed by the factory (shown here). If not insert the provided U nuts in upper mounting holes



**STEP 4:**

Carefully place step onto truck. Hand tightening the upper center bolt with washers to hold in place. Best to have a assistant to lift and hold board in place. Insert and hand tightening rear and front upper bolts.



**STEP 5:**

Insert black bolt with zinc washer from the back then through the pinch weld holes. On the front add back washer and black Nyloc nut.



**STEP 6:**

Begin tightening nuts & bolts in a alternating pattern. **Avoid using power or air tools.** Tighten to 20ft lbs torque to secure the board to the truck. Repeat the same procedure to the other side.

