

PART NUMBER: **C141MRDS**

PRODUCT: [RADIUS BUMPER](#)

APPLICATION: **14-15 CHEVY 1500
2WD AND 4WD**

PARTS INCLUDED:	QTY
RDS Replacement Bumper	1
Skid Plate	1
Skid Plate mounting Bracket	1
HARDWARE PACK:	1
3/8" X 1" Button Head Bolt	5
3/8" washer	5
3/8" Speed clips	5
1/2"x1 1/2" Button head bolts	8
1/2" Washers (Big)	4
1/2" Washers (Small)	8
1/2" x1 1/2" Hex bolts	2
1/2" Nuts	10



INSTALLATION:

Step 1: Using a flat head screw driver, remove all 12 plastic retainers in the OEM plastic shroud and set aside.

Step 2: Use a 10mm socket and remove the four screws in top of grill. Gently pull out grill to remove. Start at top by pulling up and then out. Then pull out on bottom. Set aside.

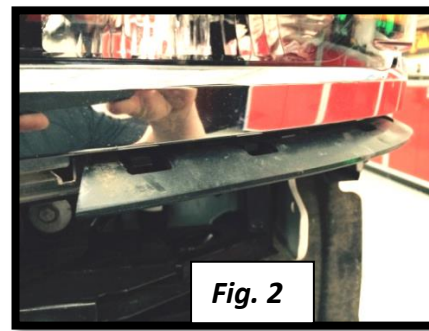
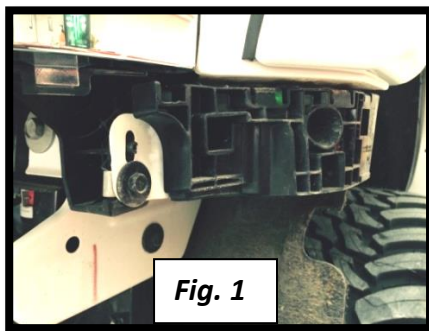
Step 3: Using a 15mm socket, remove the 3 bolts from OEM bumper side brace. Set aside (both sides). Unplug OEM sensor/fog light harness. (If applicable)



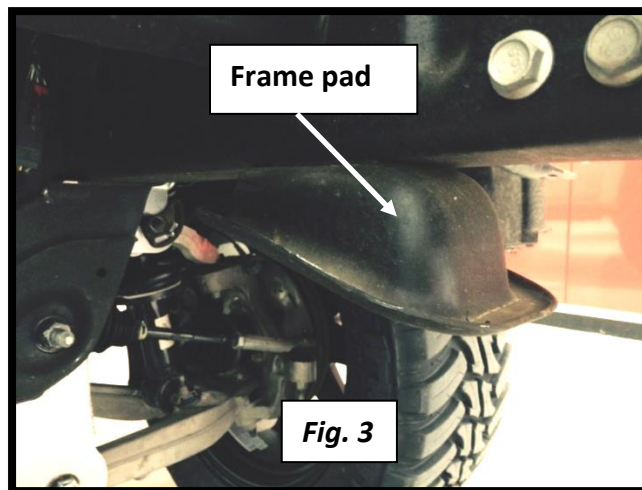
Step 4: Using an 18mm socket, remove the four bolts holding on the OEM bumper. Set aside.

Step 5: Using an 18mm socket and wrench, remove OEM tow hook. (Both sides)

Step 6: Remove Fender backing and splash guard. (Both sides) *Fig. 1, Fig2.*

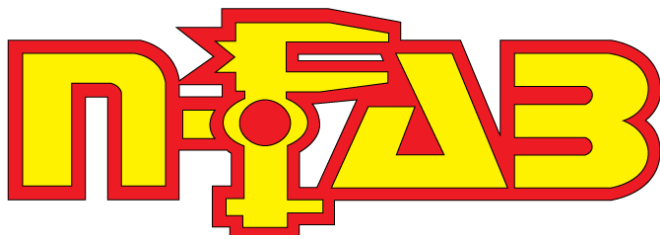


Step 7: If you have a 4WD, the two front frame pads must be removed at this time. *Fig. 3*



Step 8: Reinstall OEM grill and plastic shroud using OEM hardware.

Step 9: Using the OEM hardware, install the RDS bumper on to the six frame mounting locations. Do not fully tighten. *Fig. 4*



PART NUMBER: **C141MRDS**

PRODUCT: **RADIUS BUMPER**

APPLICATION: **14-15 CHEVY 1500
2WD AND 4WD**

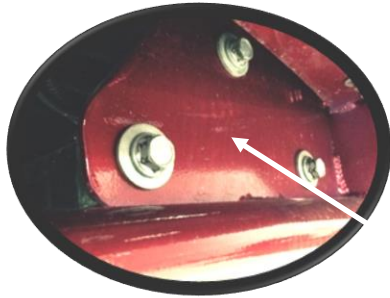
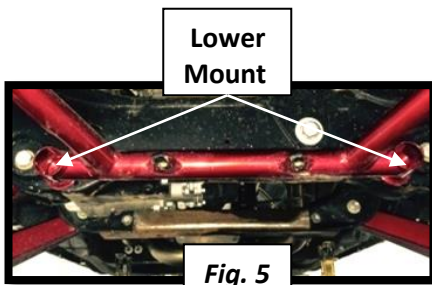


Fig. 4



Step 10: Align the skid plate bracket with the OEM $\frac{3}{4}$ holes in the lower cross member and secure with the supplied $\frac{1}{2}$ "x $1\frac{1}{2}$ " Hex bolts, $\frac{1}{2}$ nuts, and washers. Do not fully tighten. Next, align the top of the bracket with the OEM holes in the upper frame horns. There will be two $\frac{9}{16}$ " holes to be drilled out. One in the inner frame horn on the Passenger side and one in the outer frame horn on the Driver side. Once the two holes are drilled, loosely fasten with the supplied (8) $\frac{1}{2}$ "x $1\frac{1}{2}$ " button head bolts, (8) flat washers, and (8) $\frac{1}{2}$ " nuts. **Fig. 5, Fig. 6, Fig. 7**



**Lower
Mount**

Fig. 5

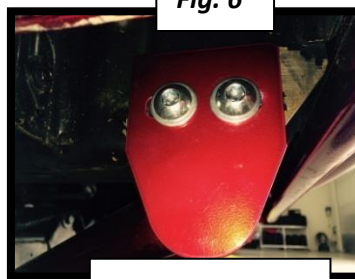
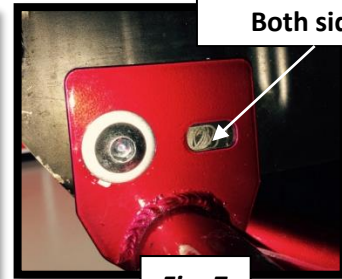


Fig. 6

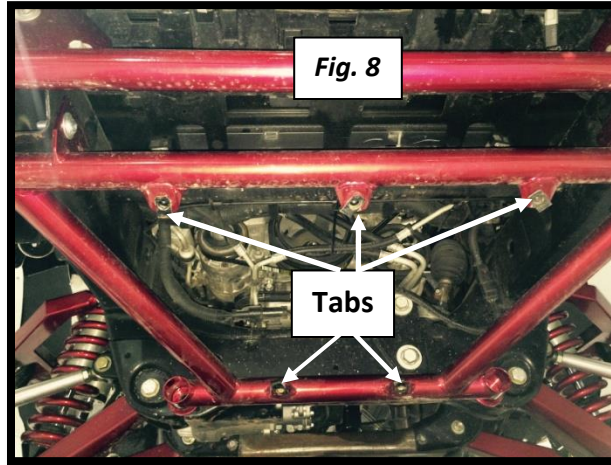
UPPER MOUNTS



**Drill 9/16" hole
Both sides**

Fig. 7

Step 11: Install the $\frac{3}{8}$ " speed clips to the 5 tabs on the skid plate bracket. **Fig. 8**



Step 12: Once the RDS bumper and skid plate bracket is in proper alignment, tighten all hardware.

Step 13: Install skid plate onto bracket and fasten with the supplied 3/8" button head bolts and 3/8" washers. Your RDS bumper install is now complete.

