



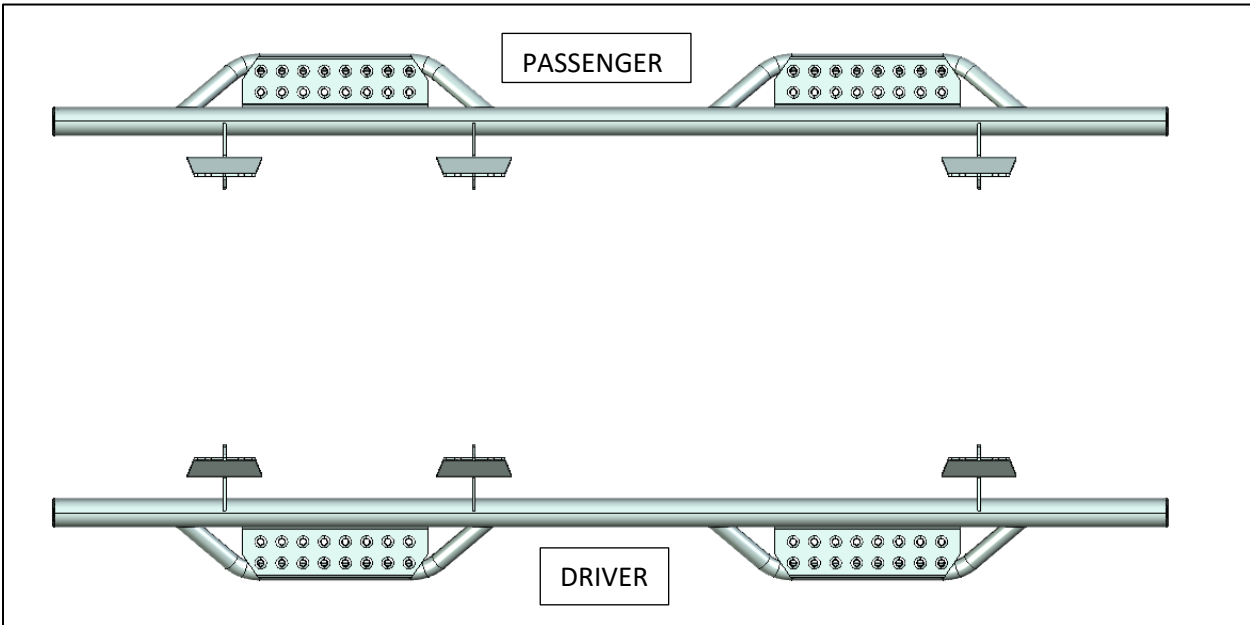
I-SHEET PART NUMBER: INST-00175
 PART NUMBER: **315418512**
 PRODUCT: **RS HOOP STEP**
 APPLICATION: **15-20 F150 CC / 17-20 F250/F350 CC**

HARDWARE DESCRIPTION		QTY.
HWKT-00031X		
FLNT-00696X	M8-1.25 CLASS 8 SERRATED FLANGE NUT	18
FDRW-00736X	M8 FENDER WASHER	18

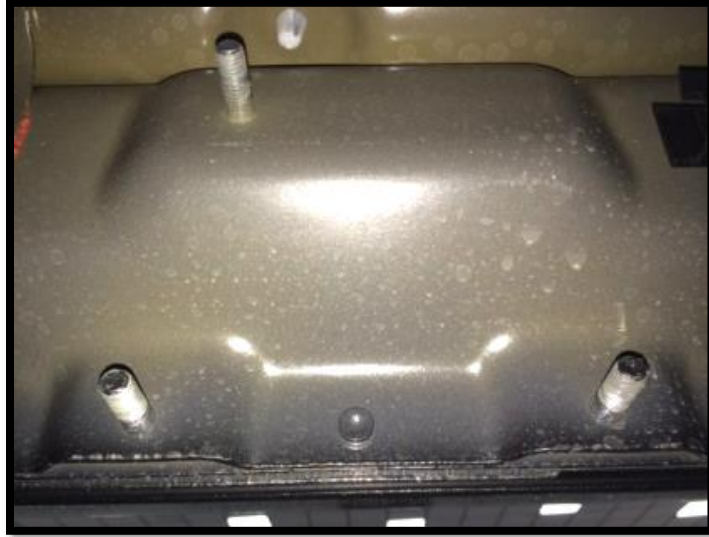


PARTS INCLUDED	QTY
DRIVER SIDE STEP	1
PASSENGER SIDE STEP	1

Step 1: Identify driver side step.



Step 1: Starting with the Driver Side. Remove all 8mm flange nuts from the 8mm factory threaded studs to remove the OE running boards.



Step 2: Next, carefully raise the step assembly into position and align the three brackets with the nine 8mm OE threaded studs.

Step 3: Using the supplied 8mm flanged nuts, fasten all nine mounting positions. Leave loose at this time.

Step 4: Beginning at the rear bracket, push upwards on the tube to align with the body then tighten only the lower rear fastener at this time.

Step 5: Next, move to the front bracket, push upwards on the tube to level with the body. Tighten all three fasteners.

Step 6: Tighten the remaining fasteners on the middle and rear bracket.

Step 7: Repeat steps 2-6 for passenger side.

