

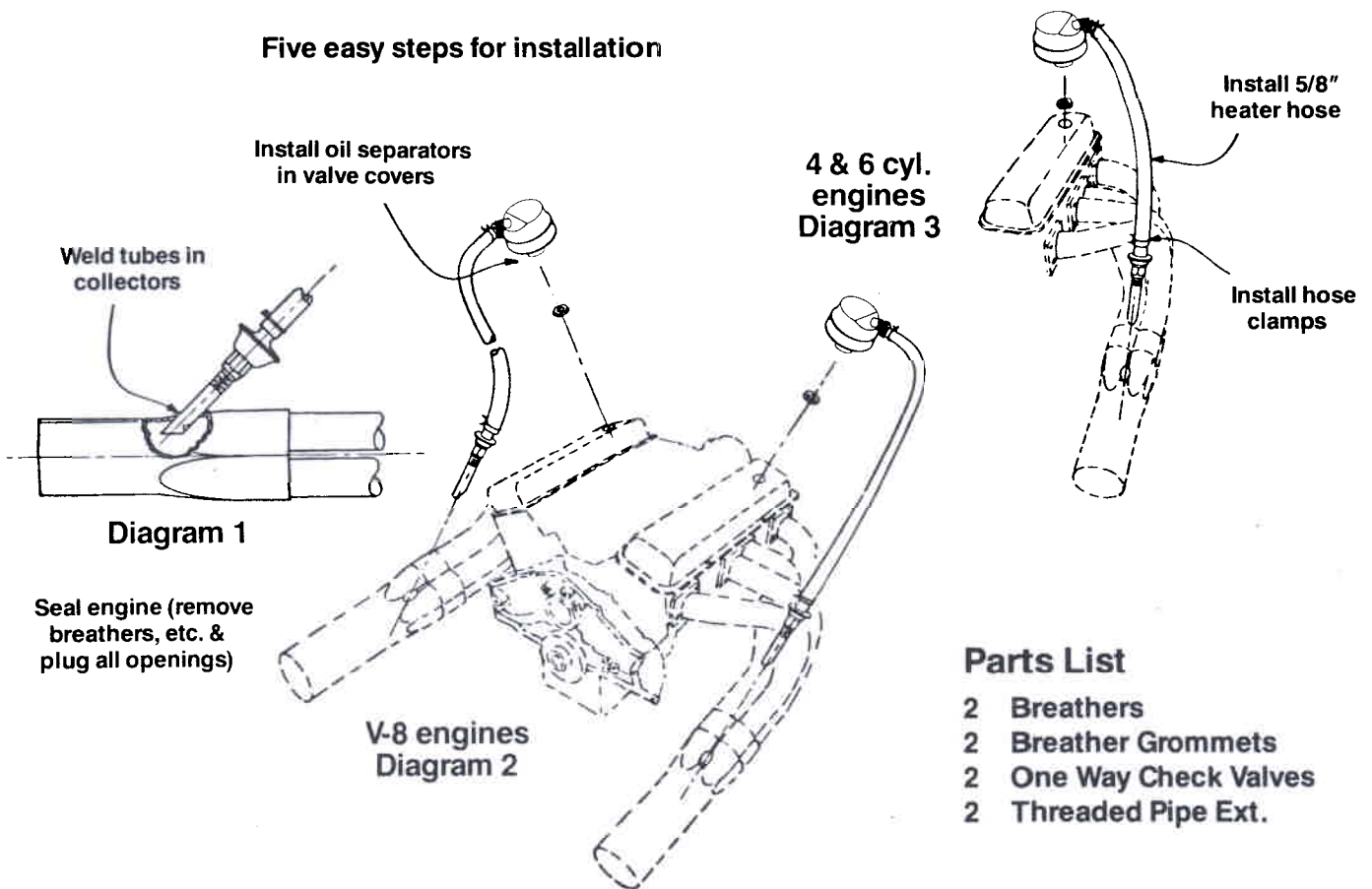


# CRANKCASE EVACUATION SYSTEM

1. Remove valve covers and drill a 1.22 inch hole in each cover if one does not already exist. Hole location should be on the top flat surface and not directly over a rocker arm oil passage. See diagram #2.
2. Install grommets in valve covers and lightly oil inner surface. Twist breathers into grommets. Fit should be tight so that air will not leak past grommet or breather.
3. Remove header collectors and drill a 7/8 inch hole on the top surface just beyond the transition area. See diagram #1.
4. With a rat tail file open up hole to create an oblong opening. Hole should be just long enough to position threaded pipe at a 45° degree angle.
5. Position threaded pipe at 45° angle. Depth should be 1/2 inch for 2 1/2 to 3 inch collectors and 3/4 inch for 3 1/2 to 4 inch collectors. See diagram. Weld all around for a complete seal.
6. Thread one way check valve onto welded pipe using teflon tape for proper seal.
7. Obtain adequate length of 5/8 inch heater hose and clamps to complete the installation.

**CAUTION:** Route heater hose so that contact with header pipes will never occur.

## Five easy steps for installation



## Parts List

- 2 Breathers
- 2 Breather Grommets
- 2 One Way Check Valves
- 2 Threaded Pipe Ext.