



THE PERFORMANCE PEOPLE:

TRUNK MOUNTED BATTERY INSTALLATION KIT #6279

INSTALLATION INSTRUCTIONS

This kit is designed for post type batteries. Use a side terminal conversion post for side terminal batteries.

1. Choose a location in the trunk where the battery is to be mounted, preferably near a frame rail. Be sure battery box lid can be installed and removed for battery maintenance. **WARNING: DO NOT MOUNT BATTERY OVER THE SPARE TIRE OR GAS TANK!**
 2. Referring to illustration 1., center punch the location of the two hold-down holes, then check for any gas or brake lines, frame supports, or any type of brackets that may be damaged or hinder assembly. Drill the two holes using an 11/32" dia. drill bit.
 3. Center the hold-down bracket on the battery and attach the hold-down bolts to the bracket using 1/4 - 20 x 1" bolts, 1/4" washers and 1/4" - 20 nuts supplied. See illustration 2.
 4. With hold-down bolts extending below the trunk floor pan, secure using 5/16" washers and 5/16" - 18 nuts. Tighten all nuts securely. For safety it is recommended to bolt the battery down through a bracket that is welded or bolted directly to the frame. See illustration 2.
- NOTE:** If more thread is required to securely anchor the hold-down bolts, cut extra threads using a 5/16-18 right hand threading die.
5. Carefully plan the route of the positive battery cable.
 6. Cut the cable to the desired length, making sure to allow extra for bends and stripping.
 7. Strip 3/4" of insulation from each cable end and attach copper lug by soldering or crimping.
 8. Anchor cable where needed to sturdy surface with mounting clamps.
 9. Repeat steps 5. through 8. for the ground cable.
 10. Attach the terminal ends to the battery. Fasten lugs to terminal ends with wing nuts. See illustration 3.

#6279 PARTS LIST

- | | |
|--------------------------------|--------------------------------------|
| 1 BATTERY BOX | 2 WASHERS 5/16" |
| 1 BATTERY HOLD-DOWN BRACKET | 6 SCREWS # 8 x 3/8" |
| 2 HOLD-DOWN BOLTS 12 1/2" long | 6 ADEL CLAMPS |
| 2 BOLTS 1/4 - 20 x 1" | 20ft. ALUM. BATTERY CABLE |
| 2 NUTS 1/4 - 20 | 2 BATTERY TERMINAL ENDS w/ WING NUTS |
| 4 WASHERS 1/4" | 4 BATTERY TERMINAL LUGS |
| 2 NUTS 5/16" | |

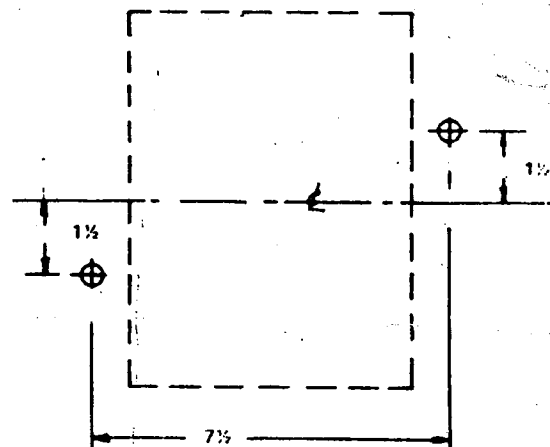


Illustration 1.

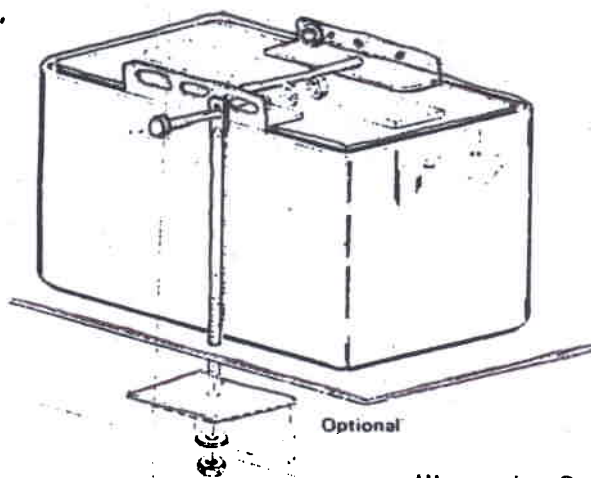


Illustration 2.

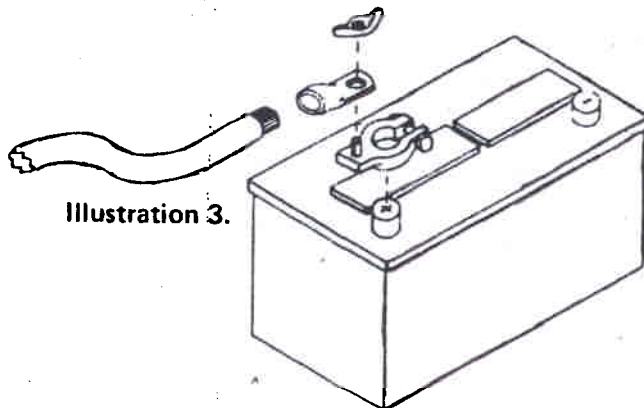


Illustration 3.

Mr. Gasket Co.

Cleveland, Ohio