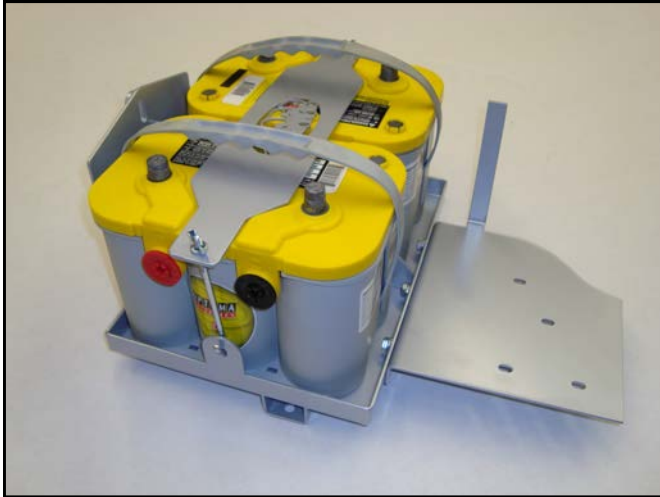




## INSTALLATION INSTRUCTIONS for JKDBT0709 DUAL BATTERY TRAY



### HARDWARE KIT:

- 1- DUAL BATTERY TRAY
- 1- POWER DISTRIBUTION/PCM BRACKET
- 1- BATTERY HOLD DOWN BRACKET
- 3- 5/16-18x1 BOLT
- 5- 5/16" FLAT WASHER
- 3- 5/16" LOCK WASHER
- 2- 5/16-18 LOCK NUTS
- 2- 5/16 "J" BOLT

NOTES: Does not include wiring. , Designed to fit Optima class 34 or 34/78 batteries. OEM batteries will also work but may require longer hold down "J" bolts.

Please read and understand all instructions before beginning the installation of the Dual Battery Tray.

The **JKDBT0709** Dual Battery Tray is designed to fit the following Jeep® vehicles: 2007 to Current JK Wranglers equipped with 6-cylinder engines (3.8L).

**STEP 1:** With the Jeep® on flat level ground, apply the parking brake, Disconnect battery terminals and remove ground from stud on inner fender. ( see figure 3 )

**STEP 2:** Remove Air filter box by loosening hose clamp , pull intake tube off of box ,remove vent hose from side of box and pull straight up. ( see figure 1 )

**STEP 3:** Remove bolt holding the Power Steering Res. And move out of way.( see figure 2 )

**STEP 4:** Disconnect all connectors shown in FIGURE 3.

**STEP 5:** Disconnect large connector coming from PCM. Carefully release tabs that retain Power Distribution/PCM to bracket and lift up on Power Distribution/PCM . Carefully disconnect all connectors from Power Distribution/PCM and move out of way. Remove Battery hold down and remove battery.( see figures 4,5 & 6).

**STEP 6:** Remove 4 bolts and 3 nuts that retain the OEM battery box and remove box from Jeep. ( Note: there is a plastic retainer that is under the wheel well that will need to be removed.

**STEP 7:** The OEM battery box will need to be cut to reuse the airbox & PCM mounting. Remove the Power Distribution/PCM mounting bracket and cut box per figure 7 & 8.

**STEP 8:** Install the new Dual Tray onto the firewall and start all the original hardware ,3 nuts and the 1 bolt through the access hole. ( see figure 9 &10 ) While tightening hold the tray to the DS to allow clearance between battery and relay.



**STEP 9:** Install the section of the OEM battery box which was cut off in step 7 using the original hardware but **DO NOT TIGHTEN**. Install the new Power Distribution/PCM bracket over top of the OEM section you just installed. Using the included 5/16" bolts & washers attach the Power Distribution/PCM bracket to the Dual Battery tray , **DO NOT TIGHTEN**. Now install the OEM Power Distribution/PCM mounting bracket start all the original bolts and then tighten all the mounting bolts. ( see figure 11,12 & 13 )

**STEP 10:** Reinstall the Power Distribution/PCM by reconnecting all the connectors and snap it back onto the mounting bracket. ( see figure 14 ) Install both batteries into tray and retain using the hold down bracket and "J" Bolts. Position Sensor over tab on bracket as shown in figure 15. Reconnect all connectors that were disconnected in Step 4. Reinstall Air filter box and Power Steering Res. In the original position. Reconnect batteries, This can be done in many ways and we recommend having a electrical specialist do this for you. You can hook up one of the batteries using the OEM cables so the Jeep is driveable if the need arises. Double check that you have all connectors hooked up and that the heater hoses, etc. will not rub on anything sharp.

---

FIGURE 1



FIGURE 2



FIGURE 3

Disconnect all connectors shown in pictures.

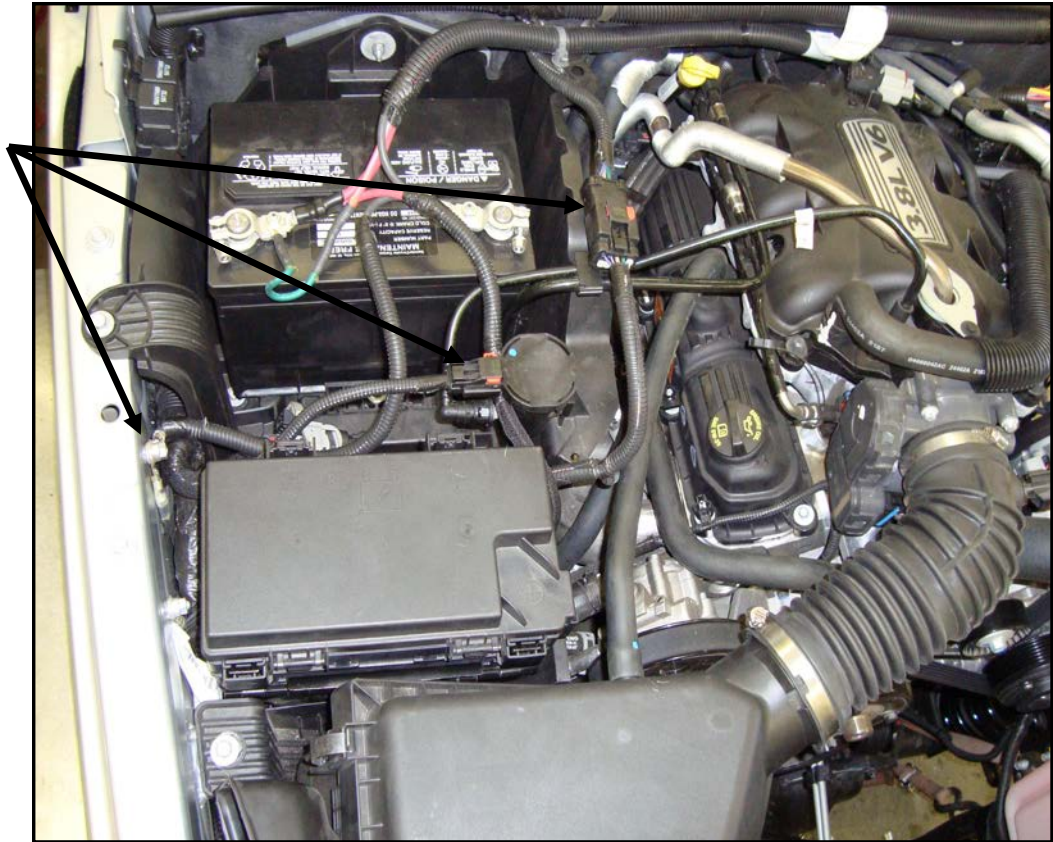
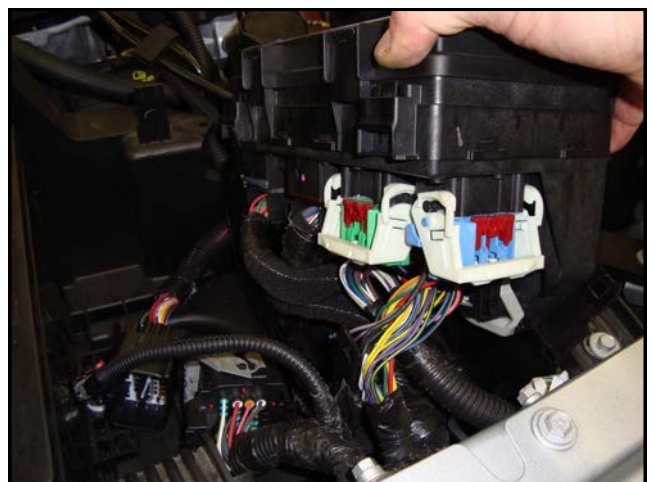


FIGURE 4



FIGURE 5



# MORE!

Mountain Off-Road Enterprises

FIGURE 6



FIGURE 7



FIGURE 8



FIGURE 9



FIGURE 10



FIGURE 11

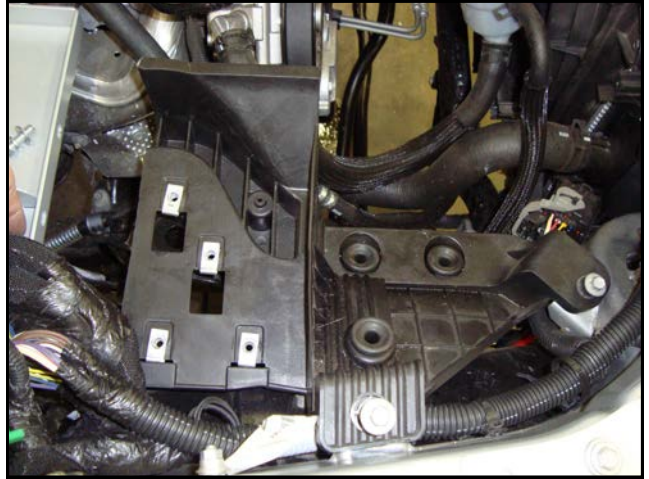


FIGURE 12

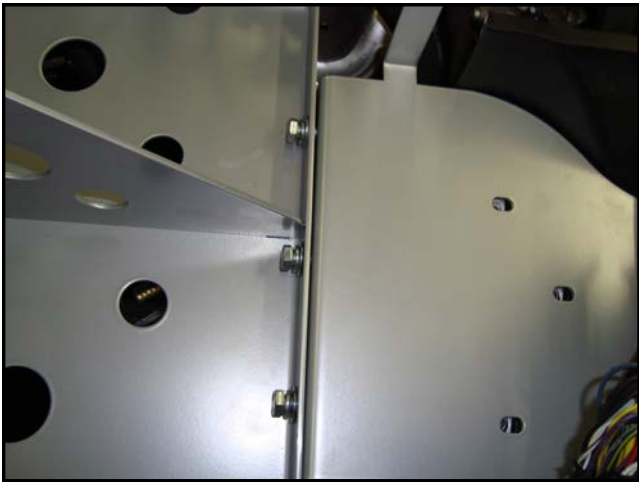


FIGURE 13

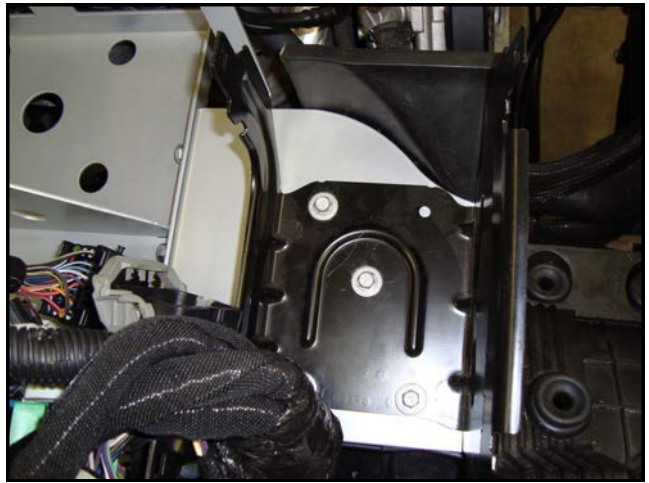


FIGURE 14

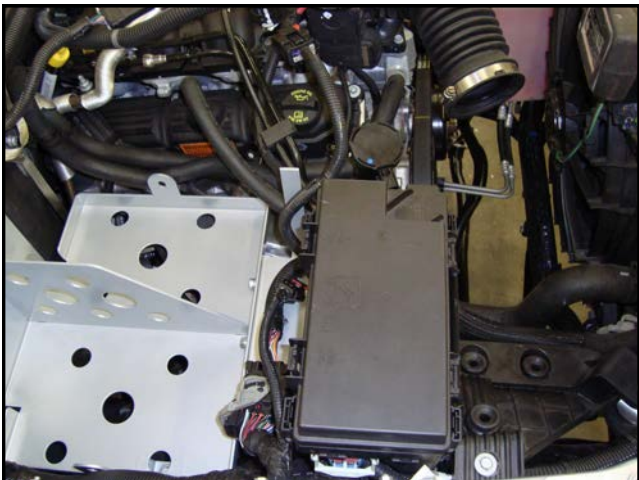


FIGURE 15

