



INSTALLATION INSTRUCTIONS

BATTERY COVER

P/N: 74225, MUSTANG 05-UP

This kit has been specifically designed to fit the 05-Up Ford Mustang top post stock batteries. It could face either the front of the car or the firewall. Included is all the necessary hardware to secure it in place. The cover as supplied is raw aluminum. It can be polished, anodized, painted or powder coated to your liking. We thank you for buying our product.

CAUTION: USE CARE WHEN INSTALLING THE BATTERY COVER SO THAT IT DOES NOT COME IN CONTACT WITH THE BATTERY POSTS.

PARTS LIST			
DESCRIPTION	QTY	DESCRIPTION	QTY
COVER	1	HOLD DOWN	1
FASTENER TAPE (HIGH DENSITY)	4"	WASHER	1
FASTENER TAPE (MEDIUM DENSITY)	4"	FLANGE BOLT	1
RUBBER EDGING	41"	------(Blank)-----	---

PREPARING COVER

1. Cut both densities of the Fastener Tape into 2" long pieces.
2. Protect cover from being scratched and rest it on a work surface.
3. Clean inside of cover with rubbing alcohol.
4. Install Rubber Edging around each terminal opening of the cover leaving no gaps. **(Figure 1)**



Figure 1



Figure 2

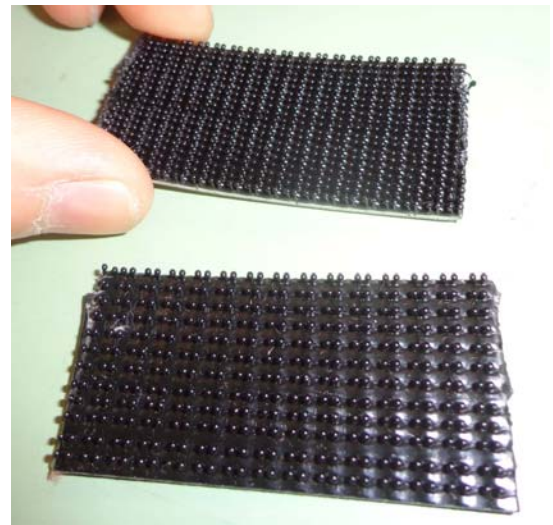


Figure 3

PREPARING BATTERY

1. Disconnect the battery cables and secure them out of the way.
2. Loosen and remove the toe clamp (which will remain attached to the battery strap) from the battery tray.
3. Remove captivating lock washer from underside of the toe clamp and remove factory hold down bolt.
4. Clean battery posts.
5. Clean the top of battery so that it is dirt and grease free.
6. Install toe clamp back into battery tray centering the alignment ribs and grooves shown in **Figure 2**. (battery is not shown)
7. Install the Washer onto the Flange Bolt and insert the Flange Bolt through the strap.
8. Pull the slack in the strap over the battery and install the Flange Bolt one thread into the tray.
9. Peel off backing and apply both 2" pieces of the High Density Fastener Tape (piece being held in **Figure 3**) to the battery as shown: **Figure 4** for forward oriented batteries and **Figure 5** for firewall oriented batteries.



Figure 4

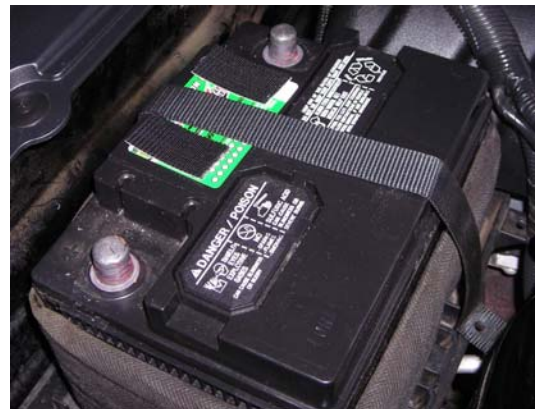


Figure 5



Figure 6



Figure 7

INSTALLING COVER

1. Mate both pieces of the Medium Density Fastener Tape to the tape already applied to the battery.
2. Confirm that there is enough slack in the strap so that the washer is spaced away from the head of the Flange Bolt as shown in **Figure 6**.
3. Peel the backing from the mated Fastener tape.
4. Slide cover over battery taking care to not contact the battery posts. Be sure that the battery-insulating sleeve is not sliding down and interfering.
5. Press and hold cover against the Fastener Tapes for 1 minute. You do not want to remove the cover for over 24 hours.
6. Slip supplied Hold Down into position shown in **Figure 7** so that it is between the head of the Flange Bolt and the Washer. The bend in the Hold Down is to be downward.
7. Tighten Flange Bolt / Hold Down to secure cover. **DO NOT OVER TIGHTEN.**
8. Route and reconnect the battery cables making sure that they do not contact cover.