



**DRIVE KIT SB & BB CHRYSLER
P/N 63848**

Parts List

| | | |
|-------------------------------|-------------------------|------------------------|
| 1- 2-1/2" V-Belt Pulleys | 2- Spring Pins | 2- Alum. Spacer 5/16" |
| 1- 4" V-Belt Pulley | 1- Stepped Steel Washer | 1- Alum. Spacer 23/64" |
| 1- Drive Hub | 1- Square Key | 1- Alum. Spacer 1/2" |
| 1- Gilmer Pulley | 2- Belt Guides, .062" | 1- Alum. Spacer 3/8" |
| 1- 7/16 x 5-1/2" Grade 8 Bolt | 1- Drive Mandrel | |
| 6- 5/16 x 2-1/4" Bolts | 1- Alum. Spacer 1/4" | |

This Drive Kit is designed to work with a Moroso External Oil Pump, Vacuum Pump, and Alternator Mount Kit.

(See Our Catalog For Specific SB and BB Chrysler Applications).

INSTALLATION

1. Mount the Drive Hub onto the balancer using the (6) 5/16 x 2 1/4" Bolts.
Note: This Drive Kit will work on a factory balancer with an offset hole.
2. Tap the two spring pins into the Drive Mandrel and then install the Drive Mandrel onto the Drive Hub. The Spring Pins will Lock the Mandrel in place.
3. After mounting the Mandrel, stack the spacers so the pulleys line up with the accessories driven by your engine.
4. Install the 1/8" square key, stepped steel washer, and 7/16 x 5-1/2" bolt. Torque to 75 ft. lbs.

NOTES

1. This kit includes a 16 Tooth Gilmer Pulley, which can be used to drive an External Oil Pump. When an External Oil Pump is used, you will need to substitute this pulley for some of the spacers in this kit. If driving a Vacuum Pump and Alternator only, the Gilmer Pulley may be left out.
2. The 1/8" square key may need to be trimmed to fit. The Hex on the Stepped Steel Washer can be used to turn the engine over.
3. **USE LOCTITE THREAD LOCKING COMPOUND ON THE 7/16 X 5-1/2" BOLT THAT SCREWS INTO THE DRIVE HUB AND THE (6) 5/16" X 2-1/4" BOLTS TO PREVENT THEM FROM BACKING OUT.**

The diagram below shows an exploded view of one of the many arrangements of all the accessories installed on the drive hub.

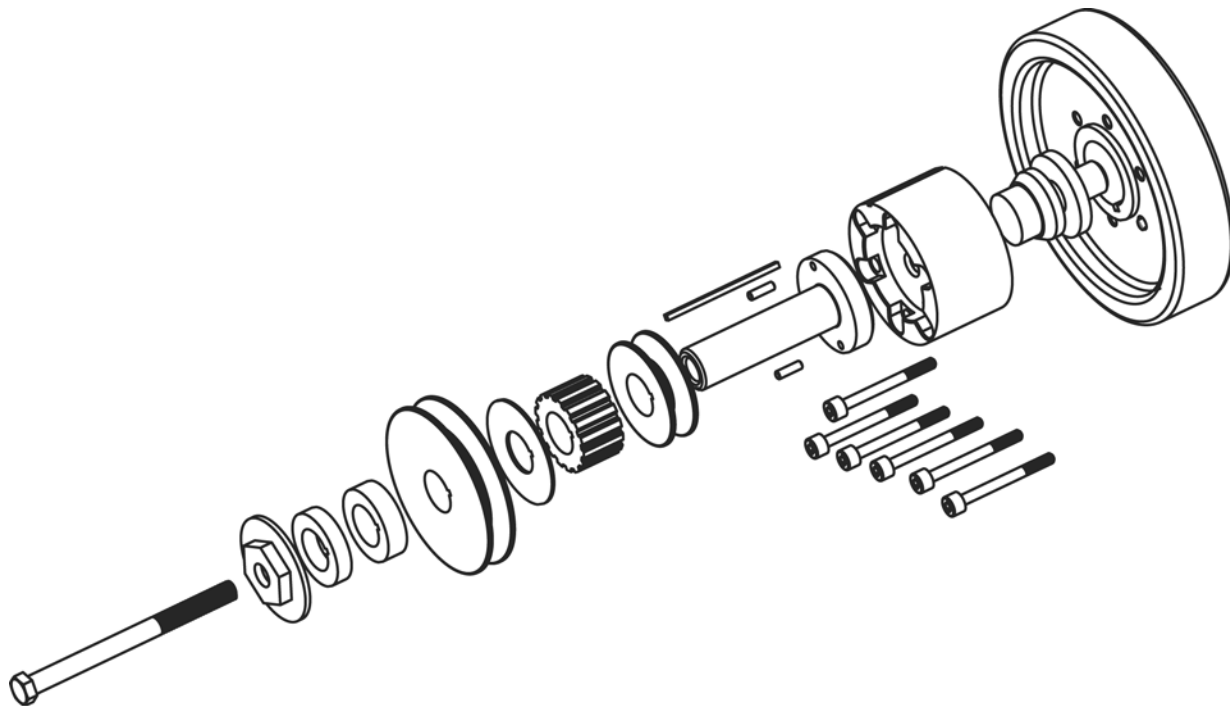


FIGURE 1