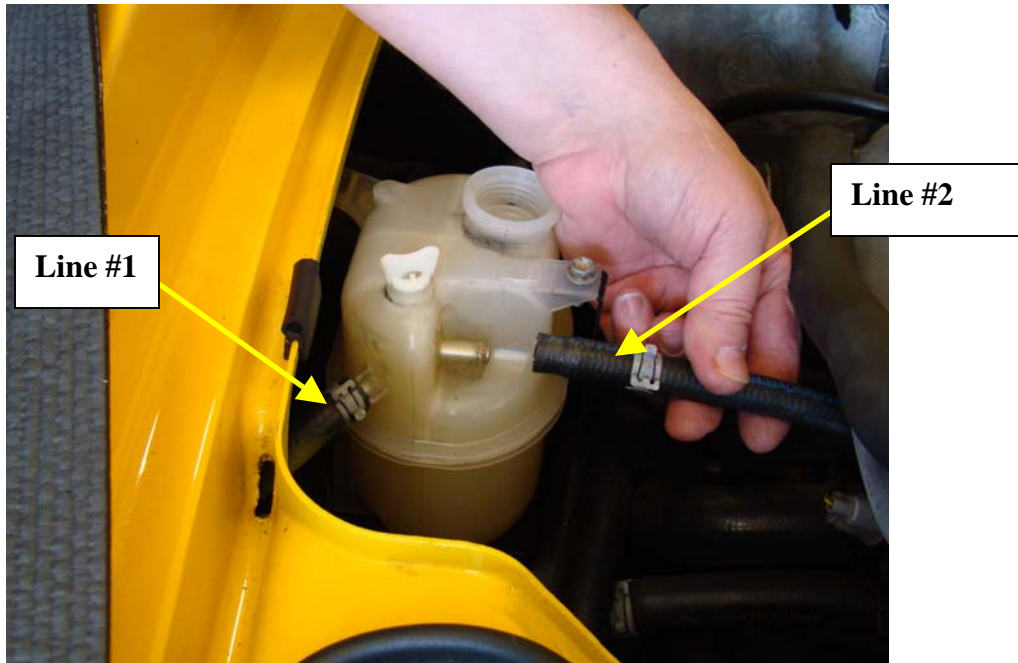
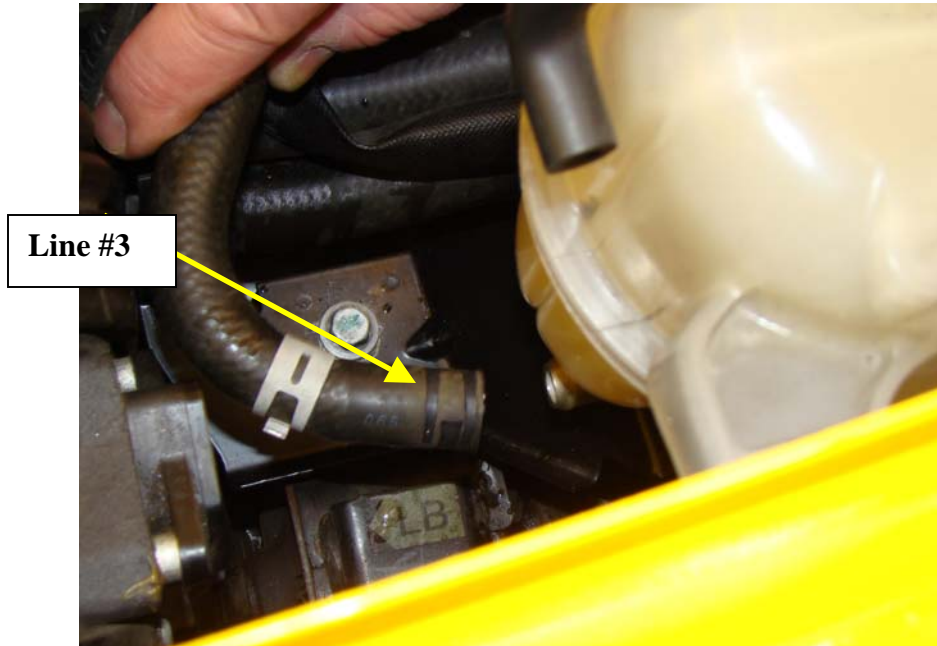




Step 1: Drain coolant tank





Step 2: Remove all lines from coolant tank

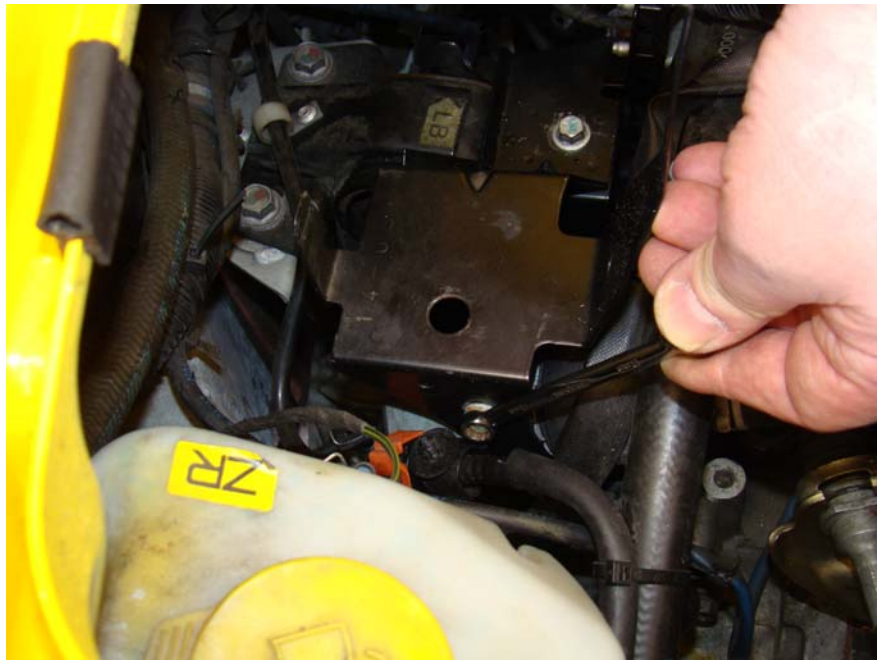


Step 3: Remove all mounting hardware

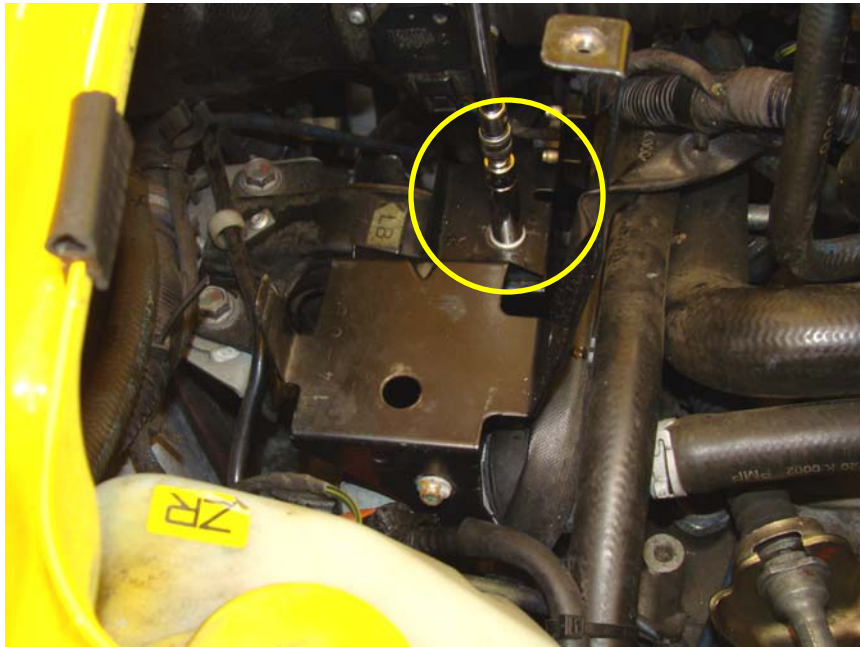




Step 4: Remove coolant tank from vehicle



Step 5: Loosen pump / bracket clamp bolt



Step 6: Remove bracket mounting bolt

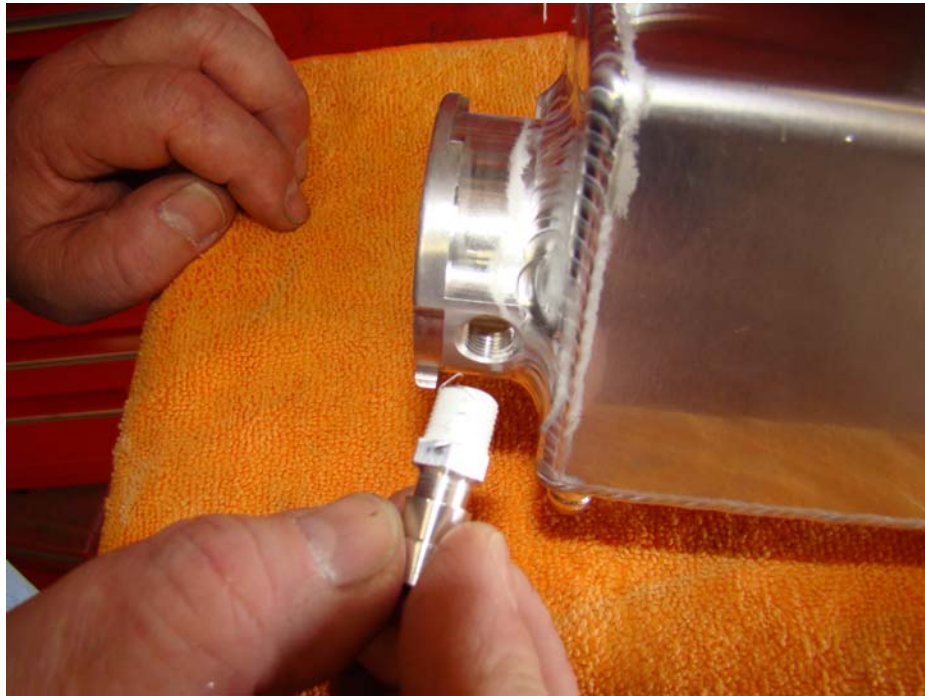


Step 7: Remove connector from pump



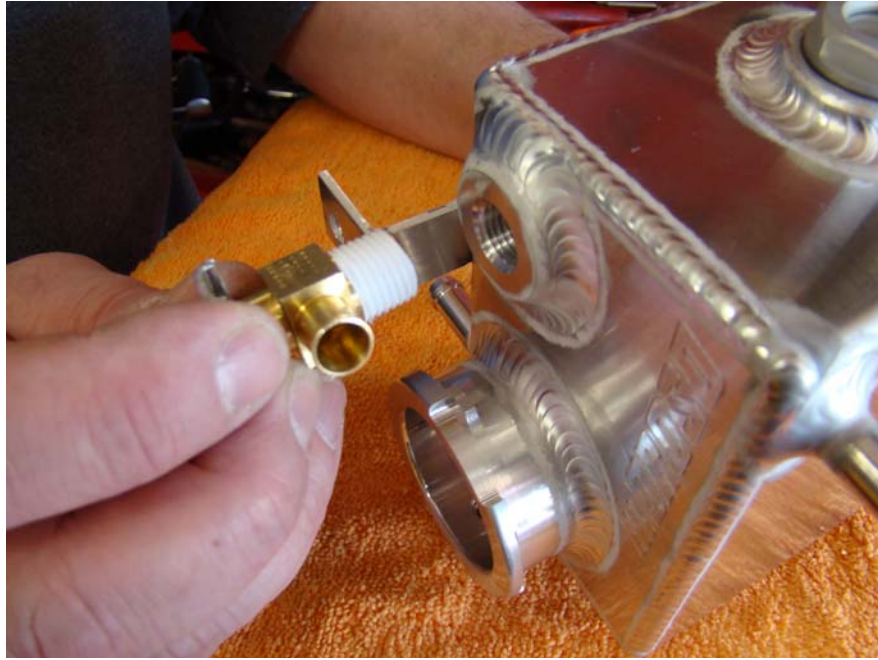
Step 8: Slide bracket over pump and remove from vehicle





Step 9: Install and tighten overflow nipple using Teflon tape

# MOROSO®



Step 10: Install and tighten bleeder valve using Teflon tape





Step 11: Install and tighten sight glass



Step 12: Place coolant tank into stock bracket as shown

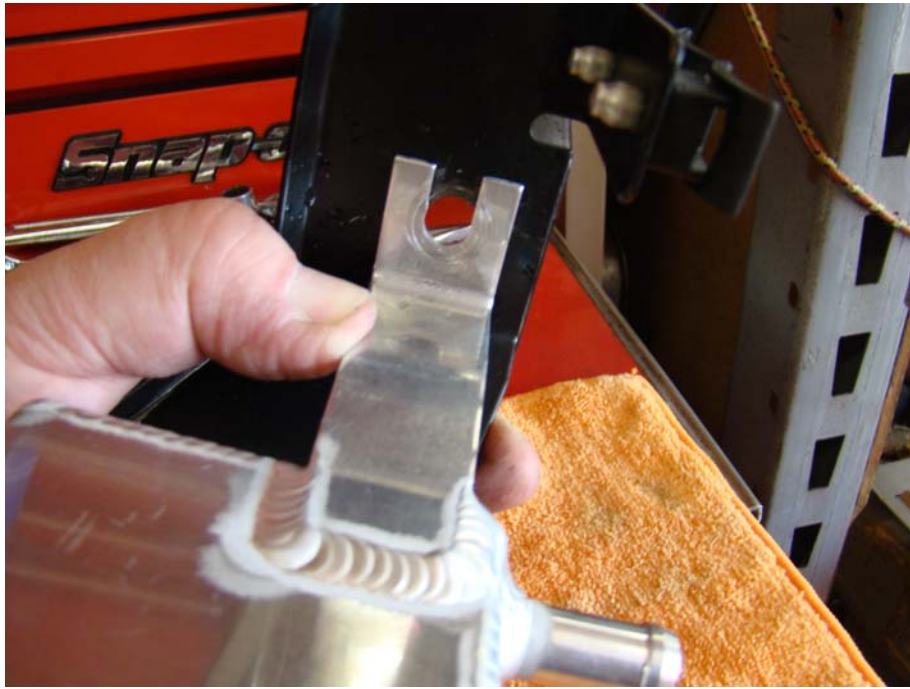


Step 13: Install 1/4-20 SHCS and fender washer on bottom of tank, do not tighten



Step 14: Install stock mounting bolt in upper bracket, don not tighten

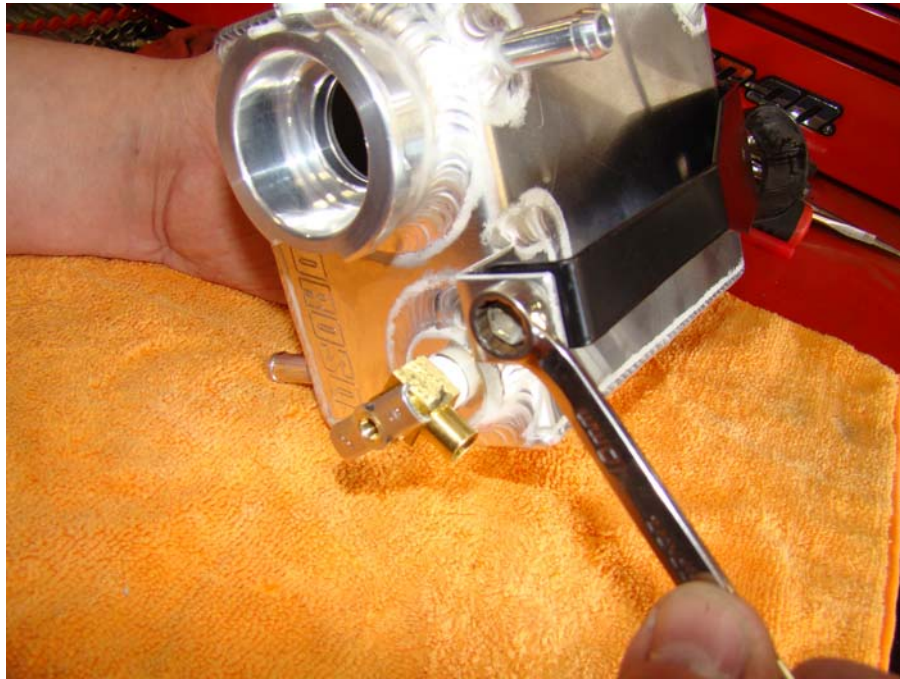




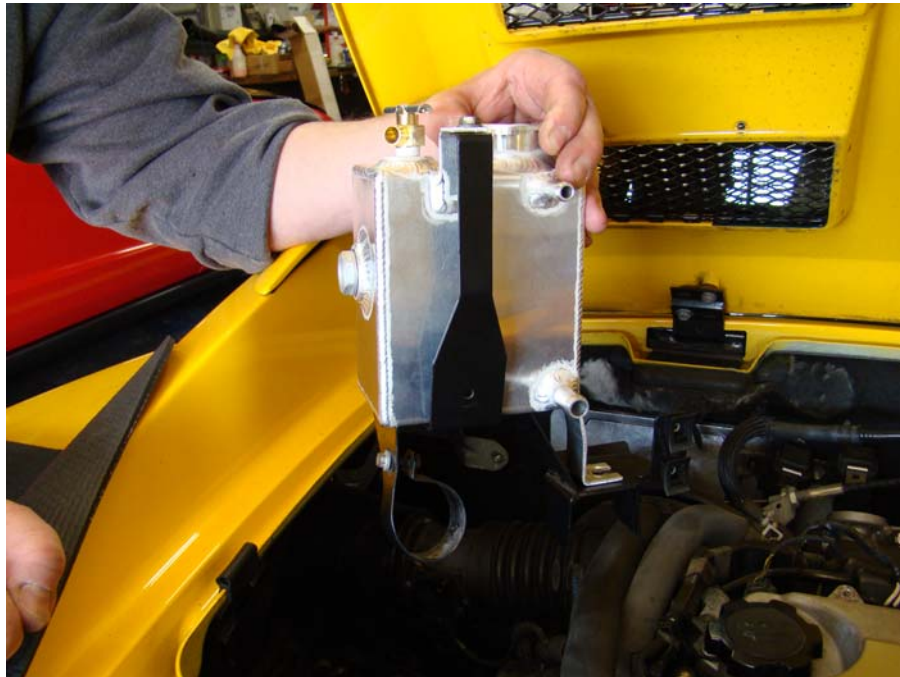
Step 15: Line up lower mount with stock mounting bracket hole





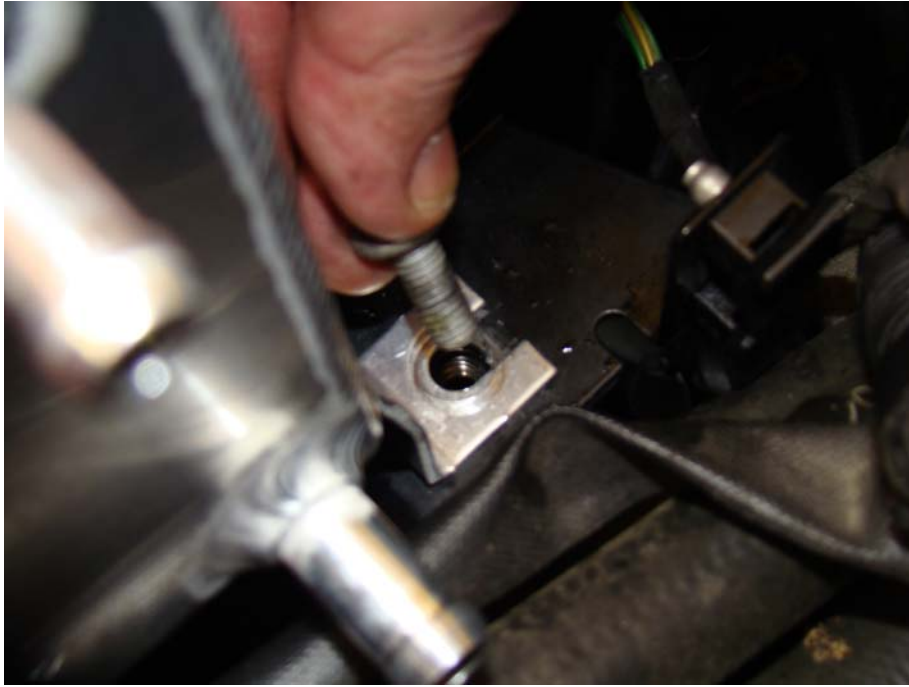


Step 16: Tighten all hardware, keeping tank “square and aligned”

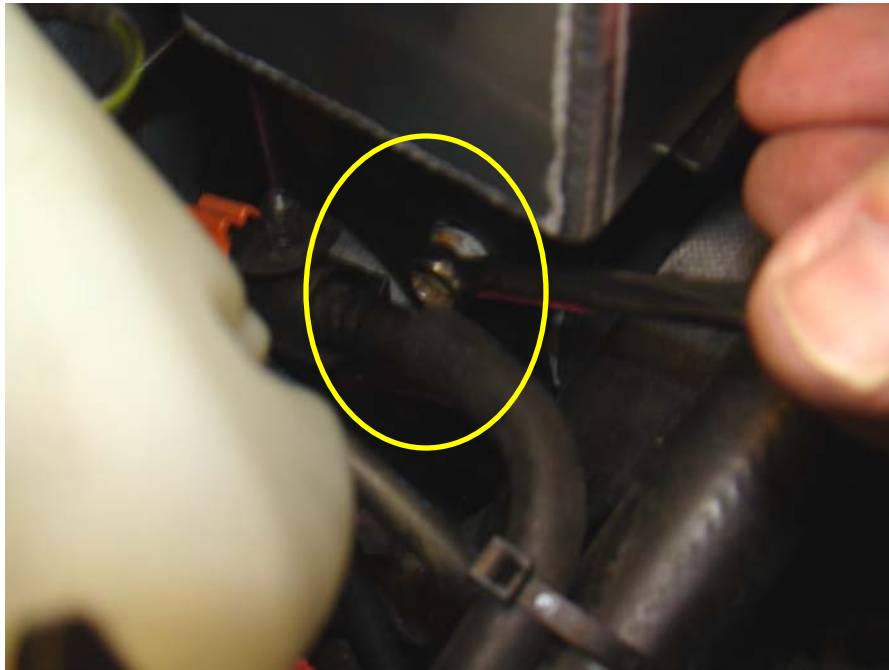




Step 17: Re-install tank and bracket assembly

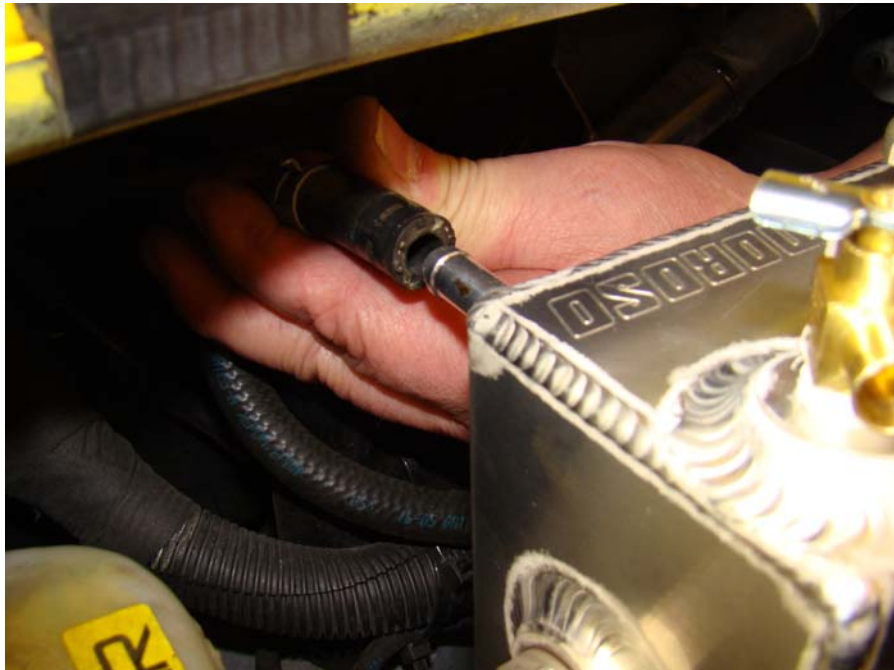


Step 18: Install and tighten stock lower mounting bolt



Step 19: Tighten pump clamp





Step 20: Insert line #1 over nipple as shown and install clamp



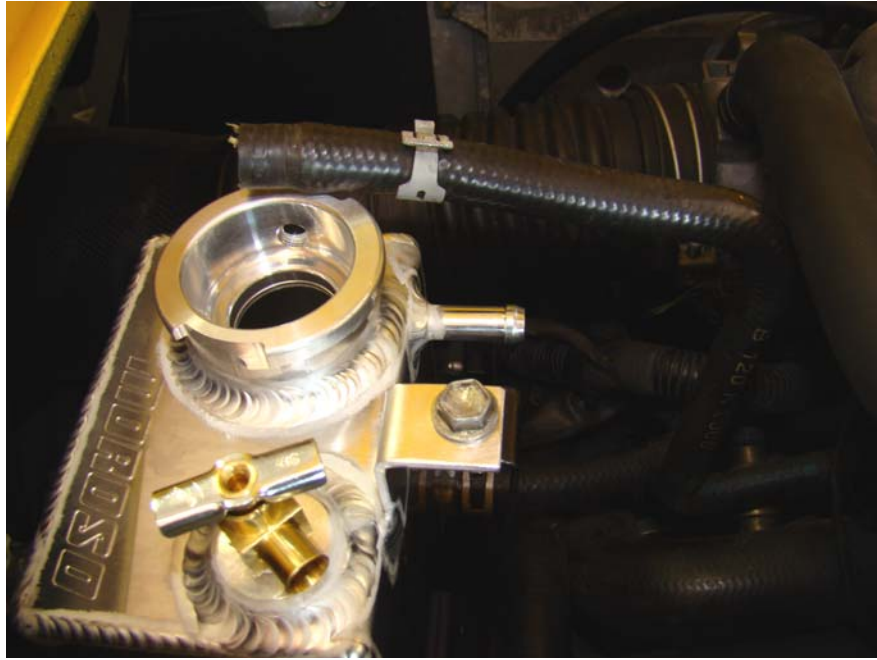
Step 21: Place line #3 next to tank as shown, mark desired length



Step 22: Cut line #3 where previously marked



Step 23: Insert line #3 over nipple as shown and install clamp



Step 24: Place line #2 next to tank as shown, mark desired length



Step 25: Cut line #2 where previously marked





Step 26: Insert line #2 over nipple as shown and install clamp



Step 27: Remove overflow tube from stock tank



Step 28: Install overflow tube on overflow nipple



Step 29: Fill and bleed coolant system following manufactures procedure

**MOROSO**®



**Installation Complete**