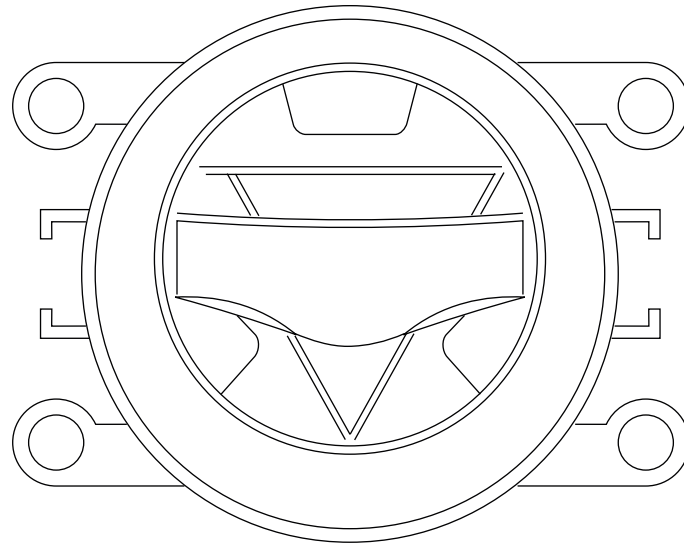




THE AUTOMOTIVE LIGHTING BENCHMARK



INSTALLATION GUIDE

# XB LED FOG LIGHTS

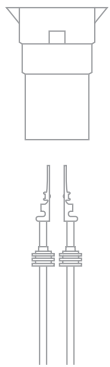


**WARNING:** By reading this document, I agree it is only to be used as an educational guide. Morimoto Lighting makes no guarantee on any finished results, nor are they to be held responsible for any damage, misuse, or personal injuries. Use at your own risk. If you are unable to clearly understand and adapt the information below to your own application, professional installation is recommended.

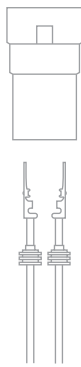
## CONNECTOR IDENTIFICATION

Your Morimoto XB LED fog lights will come with one of the following connector types:

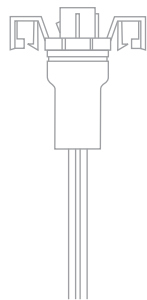
H11 / H9 / H8  
Male



9005 / 9006 /  
H10 Male



5202 / PSX24W  
Male

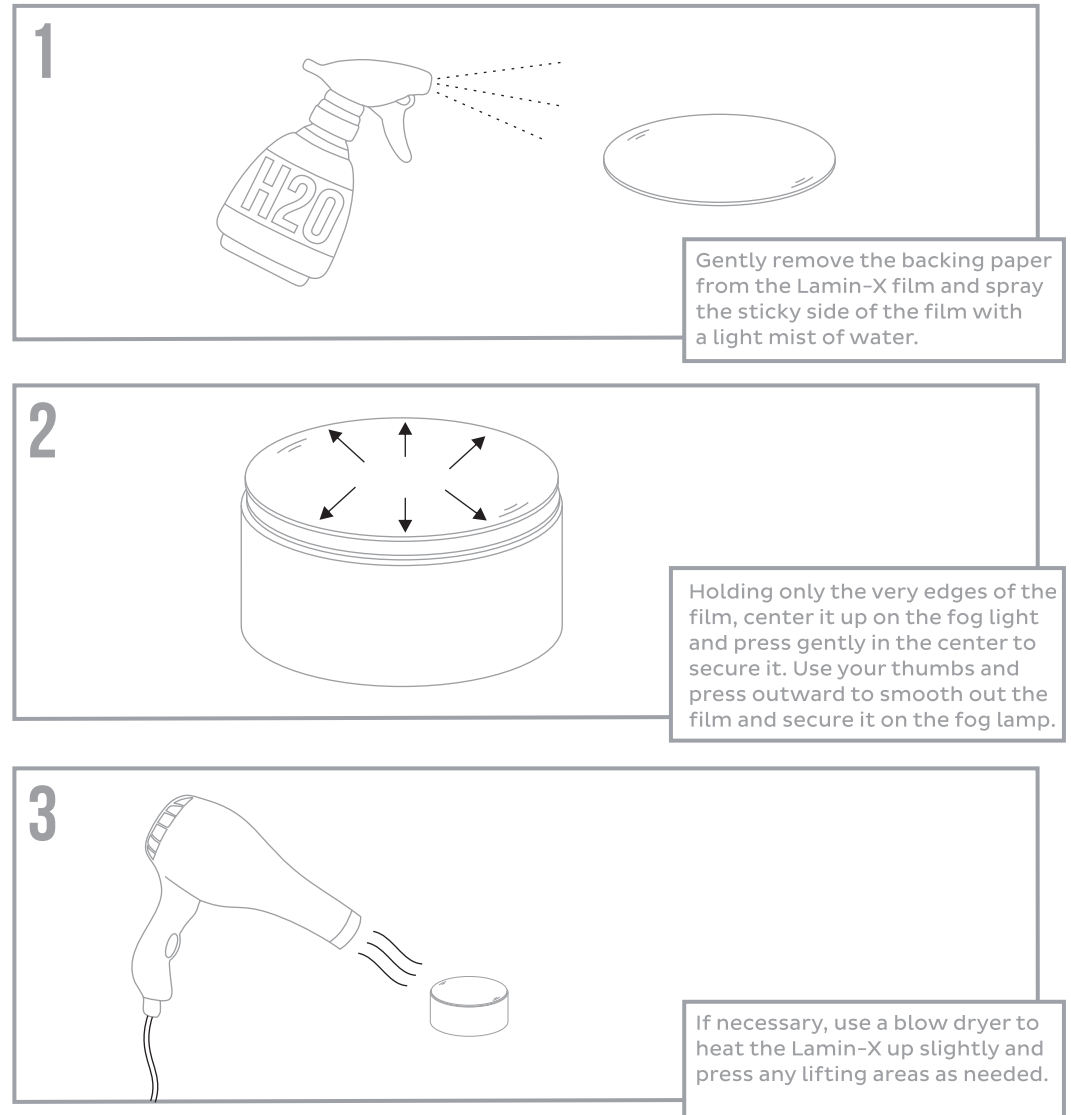


## A NOTE ABOUT WIRING

For the H11 / H9 / H8 Male and 9005 / 9006 / H10 Male connectors, they do not come pre-installed in the plastic connector housing because the fog light wiring polarity varies with these types.

Test the bare pins in the stock fog light connector to ensure the light works first, then insert the pins into the plastic connector housing in the same orientation to complete the wiring of your new fog lamps.

## OPTIONAL LAMIN-X FILM INSTALLATION



Discover other custom and factory fog lights on our website.