



THE AUTOMOTIVE LIGHTING BENCHMARK

2007-2013 SILVERADO XB LED HEADLIGHTS INSTALL GUIDE

WARNING: By reading this document, you agree it is only to be used as an educational guide. Morimoto Lighting nor its dealers make guarantees on any finished results, nor are they to be held responsible for any damage, misuse, or personal injuries. If you are unable to clearly understand and adapt the information below, professional installation is recommended.

PACKAGE CONTENTS



2X HEADLIGHT ASSEMBLIES

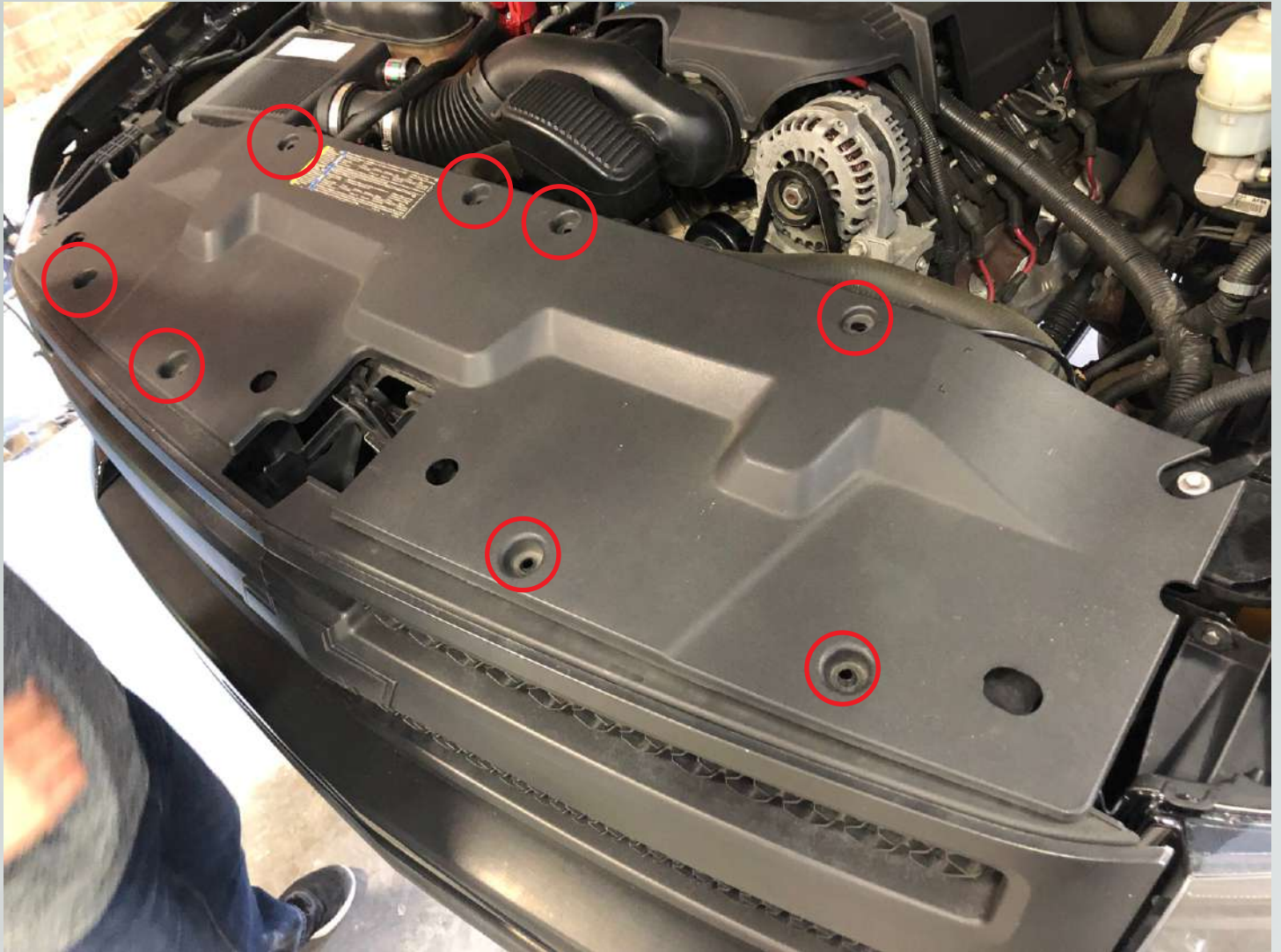


1X FUSE TAP / DRL HARNESS

IMPORTANT: If your vehicle is equipped with anything but OEM turn signals (full assemblies, LED bulbs, or otherwise) in the tail lights or elsewhere: You may experience a hyper flash and/or problem with the sequential signal setting on these headlights. This is not a defect in the headlight, and caused by un-matched impedance with your original vehicle settings.

INSTALLATION PROCESS

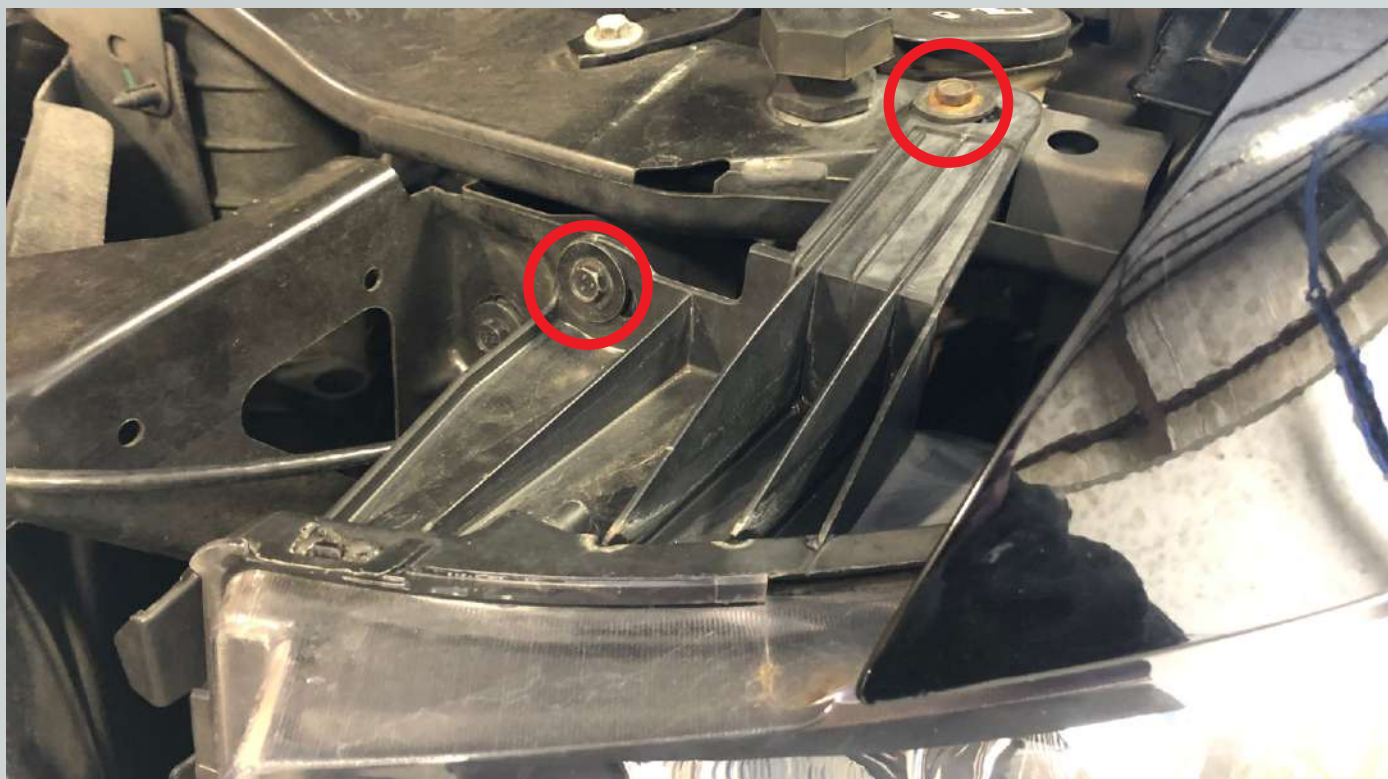
1. Remove the plastic radiator shroud by backing out the eight (8) push-clips.



2. Remove the grille by loosening the 4x 10mm bolts on the top. Then pull the grille assembly forward with moderate force. There are six (6) clips on the backside holding it on.



3. Unbolt the headlights by loosening the 2x 10mm bolts on the top and 1x on the bottom (OF EACH LIGHT).



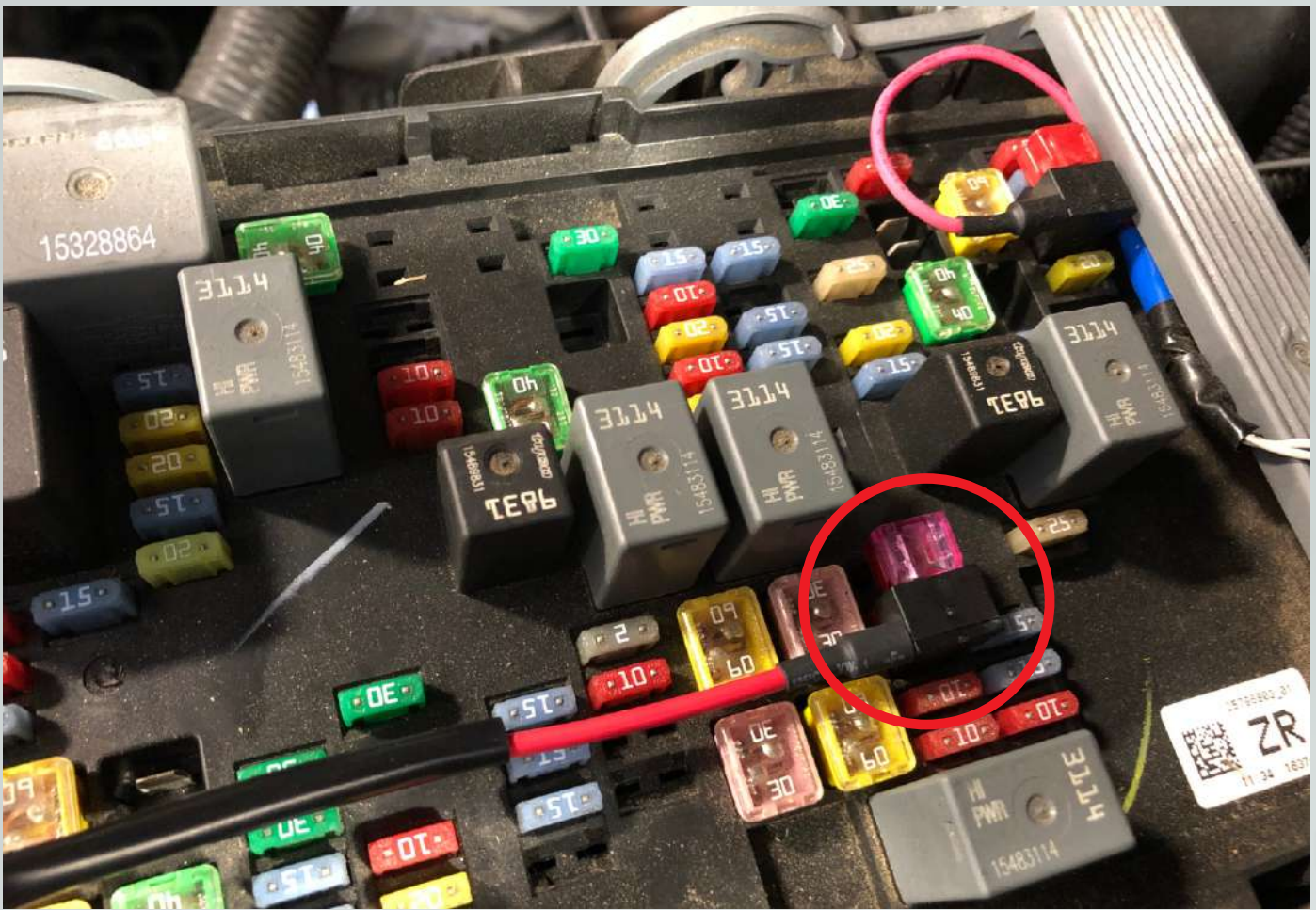
4. Remove the headlight by pulling gently forward and away from the truck.



5. Pull out and un-plug the main headlight connector, which can slide off the housing to be easier.



6. Run the provided DRL fuse tap into fuse #44 ("misc. ignition")



GAS ESSENCE

MINI FUSES

1 - TRLR STOP RT (10A)	21 - FUEL PUMP (20A)	42 - A/C COMP (30A)
2 - EXH VLV (30A)	22 - FSCM (20A)	43 - FAN (15A)
3 - ESC/ALC EXH (30A)	23 - HLDLP WASH (20A)	44 - MISC IGN (10A)
4 - TRLR STOP LT (10A)	24 - REAR WASH (15A)	45 - L/GATE RELSE (15A)
5 - ENG (15A)	25 - INJ-A (20A)	46 - A/C COMP (30A)
6 - ECM/THROT CONT (15A)	26 - TRLR PRK (15A)	47 - AIRBAG BATT (15A)
7 - ITBC (15A)	27 - LT PRK (15A)	48 - INFOTMNT (15A)
8 - FRT WASH (15A)	28 - RT PRK (15A)	49 - IPC (10A)
9 - 02-B SNRSR (10A)	29 - FOG LAMP (15A)	50 - EXP/PTO (15A)
10 - ABS 2 (25A)	30 - HORN (15A)	51 - AUX HVAC-IGN (10A)
11 - TRLR BCK/UP (10A)	31 - HI HLDLP-RT (10A)	52 - BOARD (30A)
12 - LO HLDLP-LT (20A)	32 - DRL (15A)	53 - WSW/HTR (60A)
13 - ECM-BATT (10A)	33 - HI HLDLP-LT (10A)	54 - TRC (30A)
14 - INJ-B (20A)	34 - DRL 2 (15A)	55 - STU2-1 (40A)
15 - TCM-BATT (15A)	35 - S/ROOF (30A)	56 - STU2-2 (30A)
16 - VEH BCK/UP (10A)	36 - DLIS (2A)	57 - MREC1 (60A)
17 - LO HLDLP-RT (20A)	37 - FRT WPR (25A)	58 - HVAC BLWR (40A)
18 - A/C CMPRSR (10A)	38 - SEO B2 (30A)	59 - LGM (30A)
19 - 02-A SNRSR (10A)	39 - EAP (15A)	60 - LBC2 (60A)
20 - TRANS IGN 1 (15A)	40 - HVAC BATT (10A)	
	41 - AIRBAG IGN (10A)	

J-CASE FUSES

59 - FAN-1 (40A)	60 - ALC/COMP (40A)	61 - HEAVY DUTY ABS (60A)
62 - FAN-2 (40A)	63 - ABS-1 (40A)	64 - STRTR (40A)
65 - STU2-2 (30A)	66 - LBEC1 (60A)	67 - ELCD RUN BOARD (30A)
68 - WSW/HTR (60A)	69 - TRC (30A)	70 - STU2-1 (40A)
71 - MREC1 (60A)	72 - HVAC BLWR (40A)	73 - LGM (30A)
74 - LBEC2 (60A)		

DIESEL

MINI FUSES

1 - FAN (10A)	20 - FUEL PUMP (20A)	40 - AMP (30A)
2 - EXH VLV (30A)	21 - ITBC (15A)	41 - RDO (15A)
3 - ESC/ALC EXH (30A)	22 - HLDLP WASH (20A)	42 - MISC IGN (10A)
4 - TRLR STOP LT (10A)	23 - REAR WASH (15A)	43 - L/GATE RELSE (15A)
5 - ENG (15A)	24 - TRLR PRK (15A)	44 - AIRBAG BATT (15A)
6 - TRLR STOP RT (10A)	25 - LT PRK (15A)	45 - INFOTMNT (15A)
7 - FRT WASH (15A)	26 - RT PRK (15A)	46 - IPC (10A)
8 - FUEL HTR (15A)	27 - FOG LAMP (15A)	47 - EXP/PTO (15A)
9 - TCM-BATT (15A)	28 - HORN (15A)	48 - AUX HVAC-IGN (10A)
10 - ABS 2 (25A)	29 - HI HLDLP-RT (10A)	49 - CHMSL (15A)
11 - TRLR BCK/UP (10A)	30 - DRL (15A)	50 - REAR DEFOG (30A)
12 - LO HLDLP-LT (20A)	31 - HI HLDLP-LT (10A)	51 - HTD MIR (15A)
13 - ECM-BATT (10A)	32 - DRL 2 (15A)	52 - SEC B1 (15A)
14 - DSL ECM (25A)	33 - S/ROOF (30A)	53 - LTR (20A)
15 - TRANS IGN 1 (15A)	34 - DLIS (2A)	54 - SEC/ALC (10A)
16 - VEH BCK/UP (10A)	35 - WPR (25A)	55 - HVAC-IGN (10A)
17 - LO HLDLP-RT (20A)	36 - SEO B2 (30A)	56 - ECM-IGN (15A)
18 - A/C CMPRSR (10A)	37 - EAP (15A)	
19 - ECM/THROT CONT (15A)	38 - HVAC BATT (10A)	
	39 - AIRBAG IGN (10A)	

J-CASE FUSES

57 - ALC/COMP (40A)	58 - HEAVY DUTY ABS (60A)	59 - ABS-1 (40A)
60 - STRTR (40A)	61 - STU2-2 (30A)	62 - LBEC1 (60A)
63 - ELEC RUN BOARD (30A)	64 - WSW/HTR (60A)	65 - TRC (30A)
66 - STU2-1 (40A)	67 - MREC1 (60A)	68 - HVAC BLWR (40A)
69 - LGM (30A)	70 - LBEC2 (60A)	

7. Run the DRL fuse harness across the radiator support and tidy up using zip/cable ties.

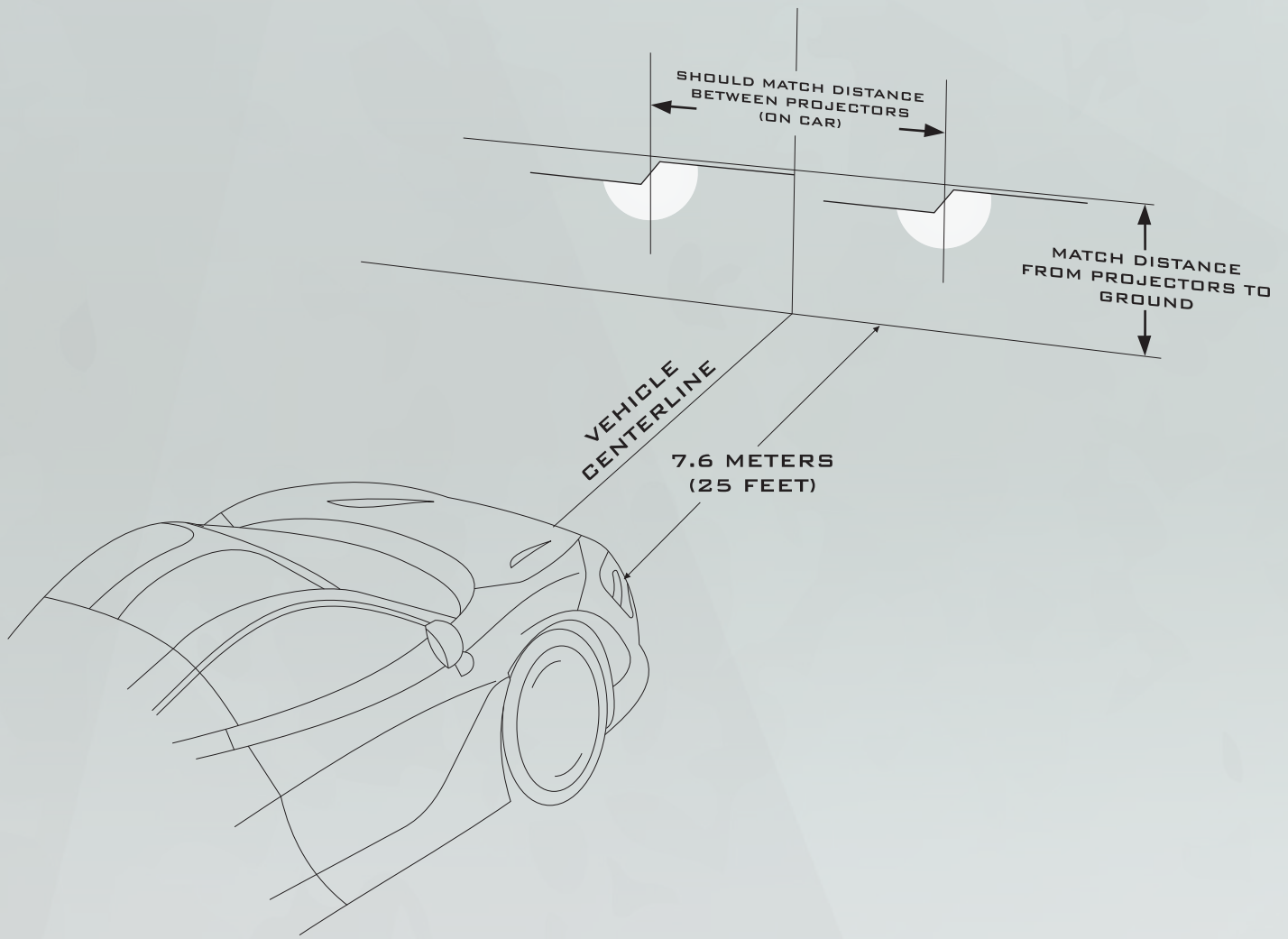


8. Connect the DRL fuse harness to the blue amp connector on back of lights and connect multi-pin socket back to the factory connector.

9. Adjust lights accessing screw from the top with a screw driver



10. Please refer to the aiming standards below when adjusting your lights.



11. Replace grille and shroud in reverse order

12. Configure turn signal function to your preference.

SEQUENTIAL TURN SIGNAL TOGGLE



SEQUENTIAL TURN SIGNAL OPERATION



STANDARD (BLINKING) TURN SIGNAL OPERATION

-END-