



INSTALLATION GUIDE

**2006–2015 MAZDA MIATA NC PERFORMANCE
ALUMINUM RADIATOR | SKU: MMRAD-MIA-06**

TABLE OF CONTENTS

Pg 1 RESOURCES & CONTACT INFORMATION

Pg 2 PARTS BREAKDOWN

Pg 2 IMPORTANT SAFETY INFORMATION

TOOLS NEEDED

INSTALLATION TIME

INSTALLATION DIFFICULTY

INSTALLATION INSTRUCTIONS

Pg 4 DISPOSAL INSTRUCTIONS

WARRANTY INFORMATION

PARTS BREAKDOWN

DESCRIPTION	QUANTITY
RADIATOR	1
M6 BOLTS, 10MM THREAD LENGTH	2
M6 BOLTS, 16MM THREAD LENGTH	2
M4 ALLEN BOLTS	2

IMPORTANT SAFETY INFORMATION

- › Mishimoto recommends you use safety glasses and protective gloves during the install of their products
- › Raise vehicle only on jack stands or on a vehicle lift
- › Allow vehicle to cool completely prior to attempting installation
- › Do not run the engine or drive the vehicle while overheating; serious damage can occur
- › Please dispose of any liquids properly
- › Mishimoto is not responsible for any vehicle damage or personal injury due to installation errors, misuse, or removal of Mishimoto products

TOOLS NEEDED

8MM SOCKET	PHILIPS HEAD SCREWDRIVER
10MM SOCKET	2.5MM ALLEN WRENCH
12MM SOCKET	PANEL TOOL
¼" RATCHET AND EXTENSION	PICK TOOL
10MM WRENCH	DRAIN PAN
FLAT HEAD SCREWDRIVER	

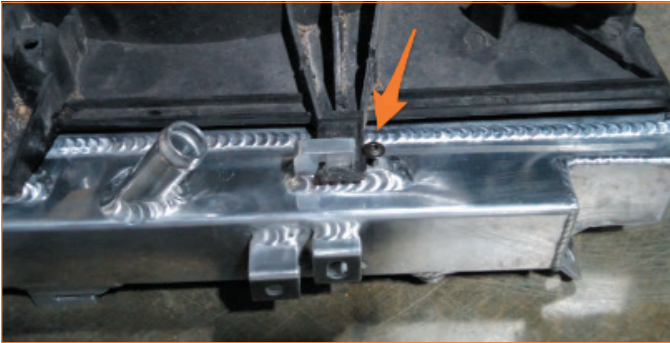
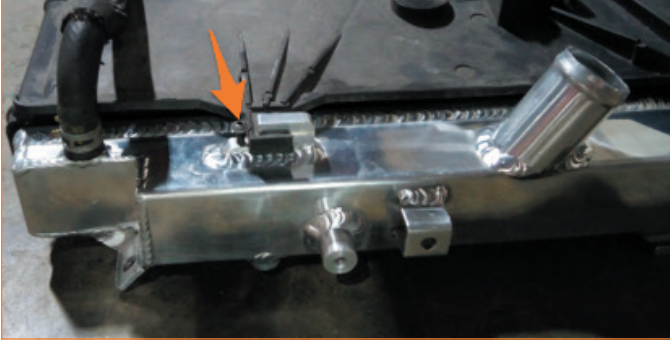
INSTALLATION TIME 4 HOURS

INSTALLATION DIFFICULTY 

INSTALLATION INSTRUCTIONS

!!! Read all important safety information prior to installing our products.

- 01.** Remove the lower splash shield.
- 02.** Drain the engine coolant.
- 03.** Remove the battery, battery tray, and battery duct.
- 04.** Remove the air intake box.
- 05.** Remove the coolant expansion tank.
- 06.** Disconnect the cooling fan electrical connector.
- 07.** Remove the PCM duct.
- 08.** Disconnect the upper and lower radiator hoses from the radiator.
- 09.** Disconnect the coolant expansion tank hose from the radiator.
- 10.** Unbolt the power steering cooler from the radiator.
- 11.** Unbolt the AC condenser from the radiator.
- 12.** Remove the upper radiator brackets.
- 13.** Remove the lower radiator brackets.
- 14.** Remove the radiator and fan shroud assembly from the vehicle.
- 15.** Transfer the upper and lower radiator bushings to the Mishimoto radiator.
- 16.** Transfer the coolant overflow hose and fan shroud to the Mishimoto radiator.



17. Thread the provided M4 Allen bolts into the upper fan shroud mounts and snug them down. Do not over tighten them.



18. Install the Mishimoto radiator in the reverse order of removal using the provided hardware. See above images for hardware locations.

19. Refill coolant and bleed the system.

Congratulations! You have finished your installation.

****For Care & Maintenance, Disposal Instructions, and Warranty Information continue to the following page.***

DISPOSAL INSTRUCTIONS

- › Do not dispose of any product as unsorted municipal waste. Use separate collection facilities. Contact your local authority for information regarding the collection systems available.
- › Never improperly dispose of any coolant, oil, or other chemicals.