

# 1999- 2014 CHEVROLET SILVERADO 1500 V8 PERFORMANCE ALUMINUM RADIATOR PARTS LIST & INSTALLATION GUIDE



## PARTS INCLUDED

- 1PC** Mishimoto Aluminum Radiator
- 2PC** Pre-installed Oil Cooler Adapters
- 2PC** Pre-installed Transmission Cooler Adapters
- 1PC** Magnetic Drain Plug

## TOOLS NEEDED

- Flat Head Screwdriver
- 7mm Socket
- 10mm Socket
- 12mm Socket
- 15mm Socket
- 3/8" Drive Ratchet
- 3/8" Drive Extensions
- Hose Clamp Pliers
- Pop-Clip Removal Tool

**INSTALL TIME** 2.5 Hours

**INSTALL DIFFICULTY**

## DISCLAIMER

- Raise vehicle only on jack stands or on a vehicle lift.
- Allow vehicle to cool completely prior to attempting installation.
- Do not run the engine or drive the vehicle while overheating; serious damage can occur.
- Please dispose of any liquids properly.
- Mishimoto is not responsible for any vehicle damage or personal injury due to installation errors, misuse, or removal of Mishimoto products.
- Mishimoto suggests that a trained professional install all Mishimoto products.

## INSTALL PROCEDURE

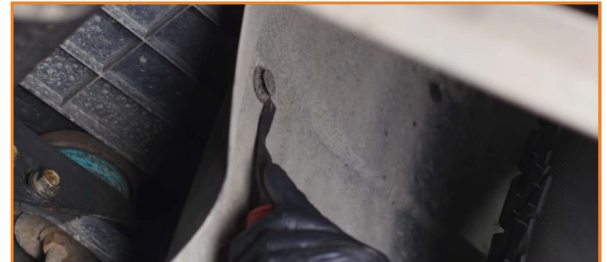
1. Remove the radiator cover.  
(8x pop-clips)



2. Remove the front splash shield. (4x 15mm bolts)



3. Peel back the fender liner in the passenger-side wheel well. (1x pop-clip, 1x 10mm bolt)



4. Remove the passenger-side lower splash shield.  
(1x pop-clip, 1x 7mm bolt)



CONTINUED ON FOLLOWING PAGE

# 01

# 1999- 2014 CHEVROLET SILVERADO 1500 V8 PERFORMANCE ALUMINUM RADIATOR INSTALLATION GUIDE



5. Compress the clamp on the lower radiator hose and slide it off the radiator port. Drain the coolant in the process. (1x spring clamp)



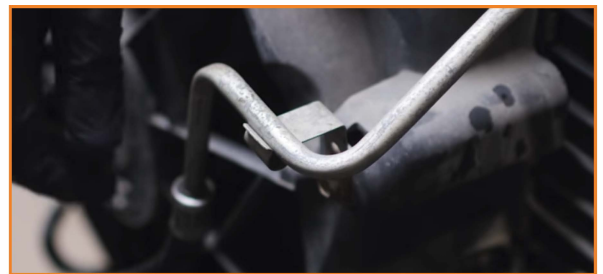
6. Unscrew the cap on your expansion tank to accelerate the draining process.
7. Compress the clamp on the upper radiator hose and slide it off the radiator port. (1x spring clamp)



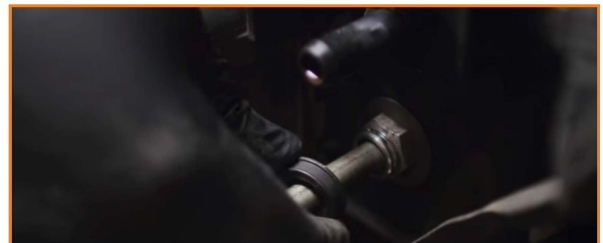
8. Unclip the upper radiator hose from the support bar.
9. Compress the clamp on the expansion tank hose and slide it down the hose. Then slide the hose off the radiator. (1x spring clamp)



10. Disconnect the MAF sensor from the intake.
11. Remove the air intake system. Loosen the clamps on the pipe and remove the bolts that secure the airbox. Be sure to slide the small hose off the intake pipe.  
(2x worm gear clamps, 3x 10mm bolts)
12. Slide the small coolant hose off the radiator. (1x spring clamp)
13. Separate the transmission lines from the fan shroud.



14. Remove the retaining clips from the transmission line adapter fittings on the radiator. Then remove the transmission lines from the adapter fittings.



15. Remove the bolts that secure the fan shroud to the radiator support. (2x 12mm bolts)



CONTINUED ON FOLLOWING PAGE

# 02

# 1999- 2014 CHEVROLET SILVERADO 1500 V8 PERFORMANCE ALUMINUM RADIATOR INSTALLATION GUIDE



16. Disconnect the fan shroud's electrical harness and remove the fan shroud. To disconnect the harness, depress the black tab at the center.
17. Remove the bolts that secure the top of the radiator. (2x 12mm bolts)



18. Lift the radiator out of the engine bay.
19. Transfer the bushings to the Mishimoto radiator. There are tabs to release two of the bushings.
20. Lower the Mishimoto radiator into place, engaging the bushings on the bottom.
21. Secure the top of the radiator using the original hardware. (2x 12mm bolts)
22. Reinstall the fan shroud and reconnect its electrical harness. (2x 12mm bolts)
23. Remove the lower radiator hose from the vehicle. (1x spring clamp)



24. Install the Mishimoto lower radiator hose. (2x worm gear clamps)



25. Remove the upper radiator hose from the vehicle. (1x spring clamp)



26. Install the Mishimoto upper radiator hose. Secure it to the clip on the upper support bar. (2x worm gear clamps)
27. Reinstall the transmission lines into the radiator and secure them to the fan shroud brackets.
28. Slide the small coolant hose over the radiator port and secure it with the original clamp. (1x spring clamp)
29. Reinstall the air intake system. (2x worm gear clamps, 3x 10mm bolts)
30. Attach the expansion tank hose to the radiator. (1x spring clamp)
31. Reinstall the radiator cover. (8x pop-lips)
32. Reinstall the passenger-side splash shield. (1x pop-clip, 1x 7mm bolt)
33. Secure the wheel well fender liner. (1x pop-clip, 1x 10mm bolt)
34. Reinstall the splash shield. (4x 15mm bolts)
35. Fill the cooling system with premixed, manufacturer-approved coolant through the reservoir filler neck, start the engine, and allow it to idle with the cap off. Turn the heat to full hot, and put the fan on low. Monitor the engine temperature and coolant level in the reservoir. Add coolant as needed to maintain proper level in the reservoir, and check your connections for leaks. If the vehicle begins to overheat or coolant starts to overflow from the reservoir, shut the engine off and allow it to cool before continuing. Once the vehicle is fully warmed up and the coolant level has stabilized, allow the vehicle to cool off completely, and then top off the coolant

CONTINUED ON FOLLOWING PAGE

03

**1999- 2014 CHEVROLET  
SILVERADO 1500 V8  
PERFORMANCE ALUMINUM RADIATOR  
INSTALLATION GUIDE**



level. Coolant level should be checked once more after putting in some miles.

**Congratulations! You have finished installing the Mishimoto 1999-2014 Chevrolet Silverado 1500 V8 Performance Aluminum Radiator.**

CONTINUED ON FOLLOWING PAGE

**04**