

PARTS INCLUDED

- 1PC Hot-side Intercooler Pipe
- 2PC Silicone Couplers
- 1PC Wire-reinforced Silicone Hose
- 4PC T-bolt clamps
- 2PC High-Torque Worm Gear Clamps
- 2PC Rubber Isolators
- 2PC Locking Nuts

TOOLS NEEDED

- 7mm Socket
- 10mm Swivel Socket
- 13mm Socket
- 15mm Socket
- 18mm Socket
- ¼" Drive and Extensions

BUMPER REMOVAL:

- 8mm Socket
- 3/8" Drive Ratchet
- 3/8" Torque Wrench
- Flathead Screwdriver
- T30 Torx
- T25 Torx

INSTALL TIME 2 Hours

INSTALL DIFFICULTY 🛠️🛠️🛠️🔧🔧

DISCLAIMER

- Raise vehicle only on jack stands or on a vehicle lift.
- Allow vehicle to cool completely prior to attempting installation.
- Do not run the engine or drive the vehicle while overheating; serious damage can occur.
- Please dispose of any liquids properly.
- Mishimoto is not responsible for any vehicle damage or personal injury due to installation errors, misuse, or removal of Mishimoto products.

- Mishimoto suggests that a trained professional install all Mishimoto products.

ATTENTION

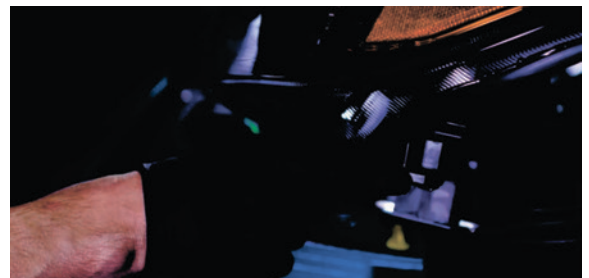
This guide covers the installation of both the hot and cold side intercooler pipes. If you have one and not the other, simply follow the steps that explain the installation process for the side you have.

INSTALL PROCEDURE

1. Release the headlights from the front of the vehicle. Remove the screws holding them in place and disconnect the electrical harness kept underneath. To release the harness, depress the tab at the center. (4x T30 torx screws)



2. Note the tabs at the bottom edge of each headlight as well as the vehicle's frame for when you must reinstall them later.



3. Remove the pop-clips that secure the undertray to the stabilizer bar. (2x pop-clips)

CONTINUED ON FOLLOWING PAGE

01



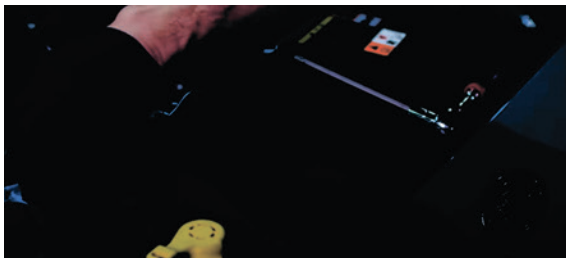
4. Remove the undertray by unscrewing the rest of the hardware securing it.
(8x T30 torx screws, 2x pop-clips)



5. Release the lower front edge of the front bumper. There is a total of seven screws holding this area together. (7x T30 torx screws)
6. Disconnect the fender liners, and then separate the bumper from the fenders on both the driver side and the passenger side.
(4x pop-clips, 4x T30 torx screws)



7. Remove the top edge of the front bumper.
(5x T30 torx screws, 2x pop-clips)



8. Disconnect the hood release cable from the hood latch assembly by lifting the cable up. Then, remove the cable stop from the lever.
9. Lift the tabs on the radiator support to release the bumper.



10. Remove the front bumper from the vehicle.
11. Separate the break ducting from both sides of the vehicle. (6x T25 torx screws)

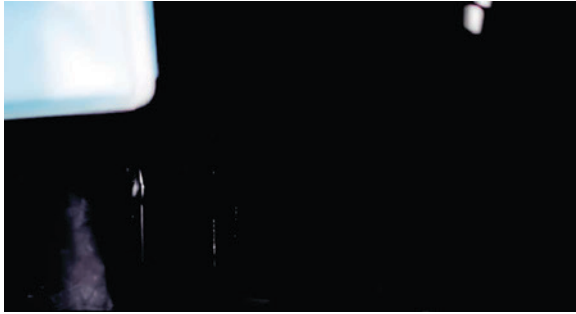


12. Loosen the clamp securing the hot-side pipe to the intercooler end tank. Then, separate the connection. (1x worm gear clamp)



13. Loosen the clamp securing the cold-side hose to the intercooler end tank. Then, separate

the connection. (1x worm gear clamp)



14. Remove the engine cover.
15. Loosen the clamps securing the cold-side hose to the throttle body, and then remove it from the vehicle. (2x worm gear clamps)



16. Remove the bolts that secure the hot-side pipe to the brackets under the vehicle. (2x 10mm bolts)

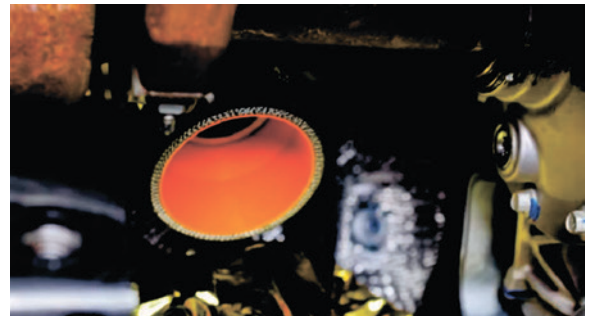


17. Loosen the clamp holding the hot-side pipe to the turbo, but leave the pipe there for now. (1x worm gear clamp)

18. Undo the bolts holding up the subframe support. Gently lower it and let it suspend to give you better access to the hot-side pipe. (2x 18mm bolts, 2x 15mm bolts)



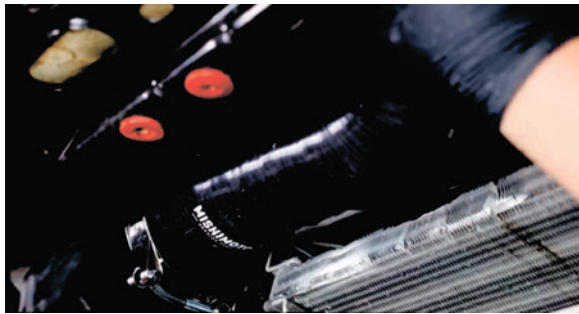
19. Lower the hot-side pipe from its resting position. Be careful not to collide with the nearby subframe support.
20. Install the Mishimoto cold-side pipe. First, slide the pipe onto the end tank of your intercooler, and then lift the other end up toward the throttle body. Secure the connection to the throttle body with the provided clamp. (1x t-bolt clamp, 1x worm gear clamp)
21. Slide a clamp over the small silicone coupler and install it to the turbo. (1x t-bolt clamp)



22. Remove the hot-side mounting posts and replace them with the provided rubber grommets from your kit. The longer rubber isolator goes at the rear of the engine and the shorter one at the front. (2x 13mm bolts)
23. Slide a clamp over the hot-side pipe and insert it into the smaller coupler you just installed. (1x t-bolt clamp)



24. Slide clamps over the larger coupler and install one end to the hot-side pipe and the other to the Mishimoto intercooler.
(1x worm gear clamp, 1x t-bolt clamp)



25. Reinstall the subframe support. Use a torque wrench to secure the bar. Torque to 81 ft-lbs.
(2x 18mm bolts, 2x 15mm bolts)
26. Reinstall the brake ducting on both sides using the original hardware. (6x T25 torx screws)
27. Reinstall the front bumper. Engage the tabs on the top edge of the frame and the lower sides with the fender liners.
28. Reinstall the top edge of the front bumper.
(5x T30 Torx screws, 2x pop-clips)
29. Secure the fender liners with the original hardware. (4x pop-clips, 4x T30 torx screws)
30. Reconnect the hood release cable.
31. Secure the lower edges of the front bumper with the original hardware. (7x T30 torx screws)
32. Reinstall the undertray and attach it to the

stabilizer bar. There are tabs at the front of the undertray that slide into position first before the back is raised and fastened down. Use the original hardware to secure the undertray.

(4x pop-clips, 8x T30 torx screws)

33. Reconnect the lighting harness.
34. Reinstall the headlights, reconnecting the electrical harness under each light and using the original hardware to fasten them to the frame.
(4x T30 torx screws)

Congratulations! You have finished installing the Mishimoto 2016+ Ford Focus RS Intercooler Pipe Kit.