



# SERVICE PARTS LIST

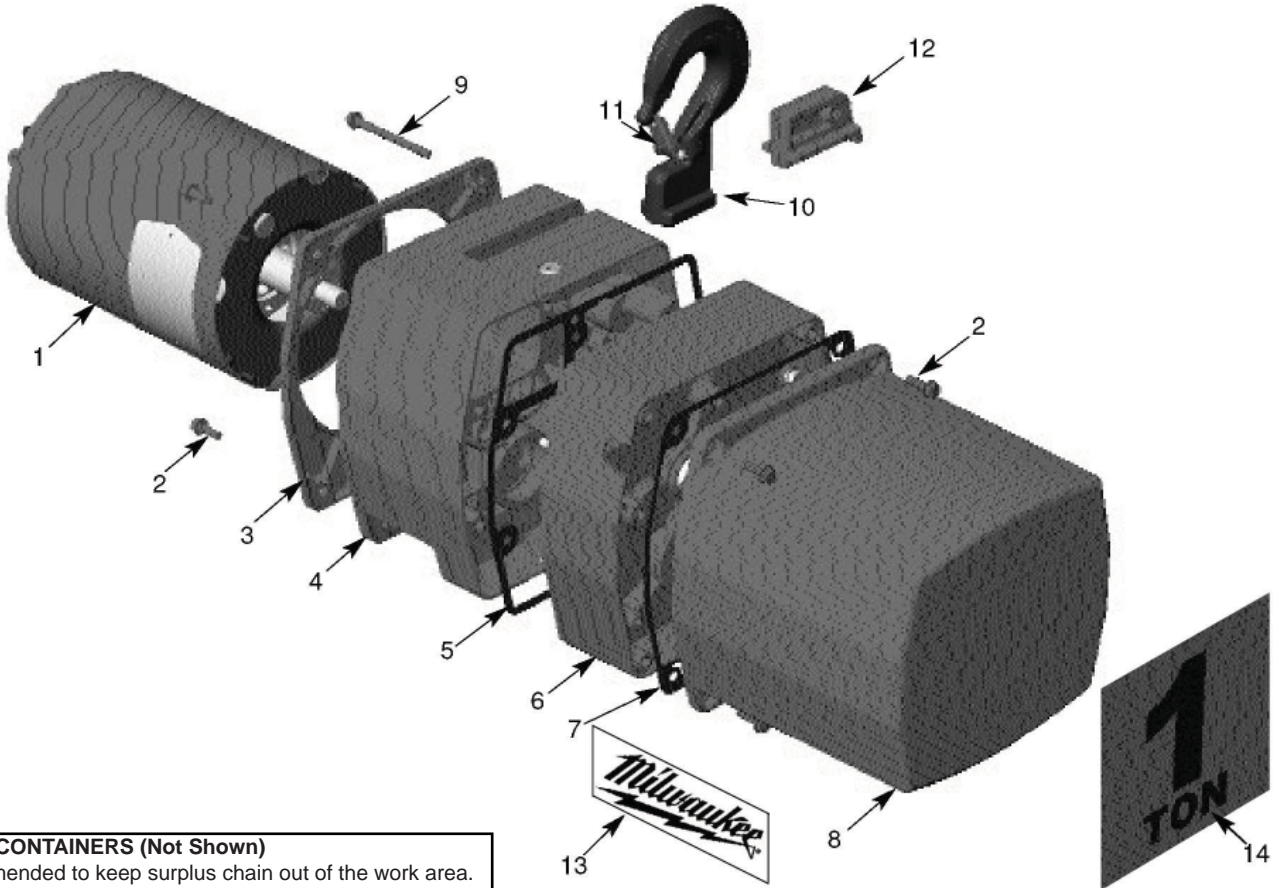
**BULLETIN NO.  
54-02-1203**

SPECIFY CATALOG NO. AND SERIAL NO. WHEN ORDERING PARTS		REVISED BULLETIN
<b>ELECTRIC CHAIN HOISTS</b>		
<b>CAT. NOS.</b>	9560, 9561, 9562, 9565, 9566, 9567, 9568, 9570, 9571, 9572, 9573	<b>SERIAL PREFIX</b> MJLC

**EXAMPLE:**

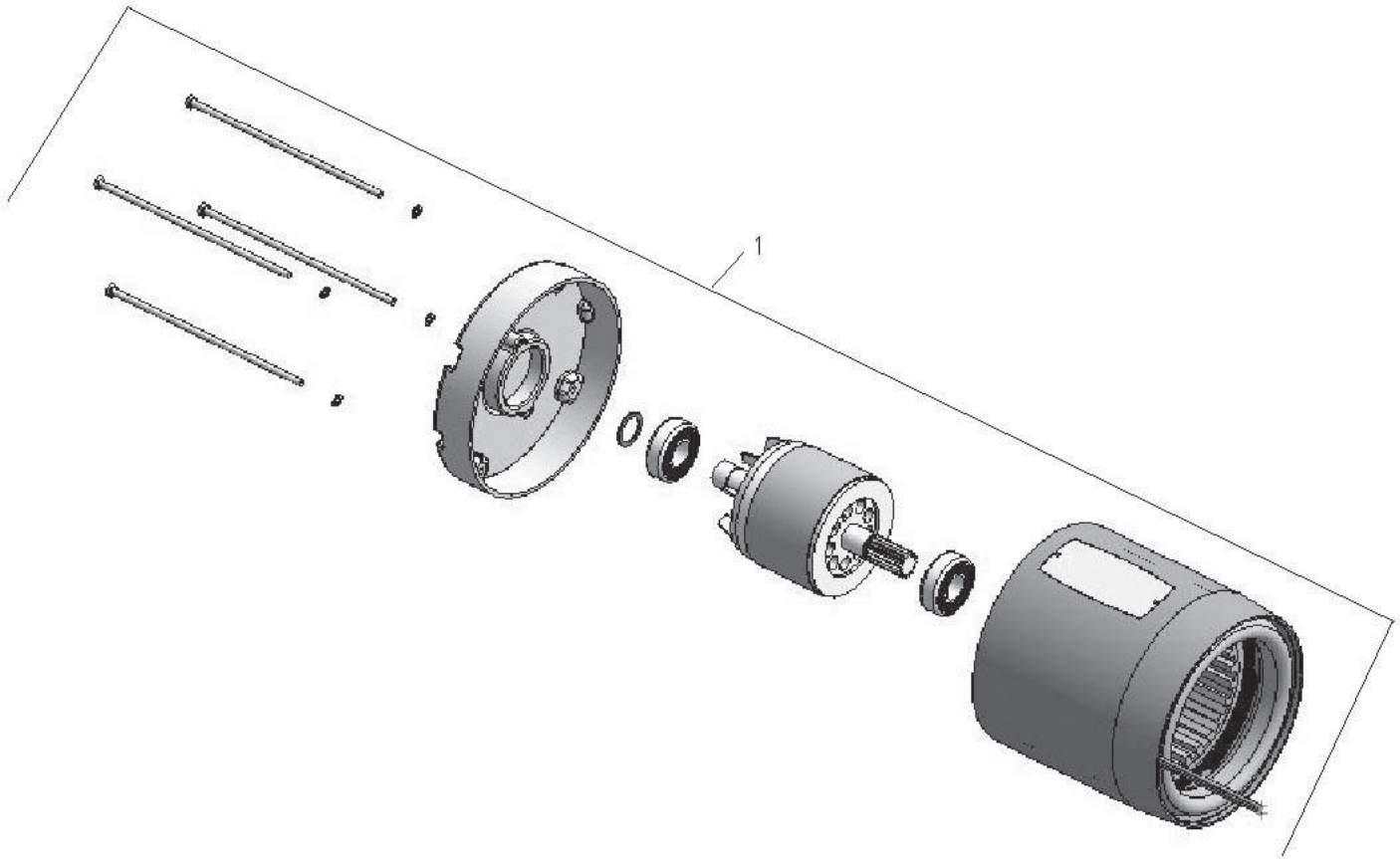
00 0

Component Parts (Small #)  
Are Included When Ordering  
The Assembly (Large #).



CHAIN CONTAINERS (Not Shown)	
Recommended to keep surplus chain out of the work area.	
42-51-0116	For Electric Chain Hoist No. 9560 thru 9562.
42-51-0117	For Electric Chain Hoist No. 9565 thru 9568.
42-51-0118	For Electric Chain Hoist No. 9570 thru 9573.

FIG.	PART NO.	DESCRIPTION OF PART	QTY.
<u>FOR CATALOG NOS. 9560, 9561 &amp; 9562</u>			
1	23-30-0515	1/2 HP 115/230V 60 HZ MOTOR	1
3	42-92-1345	TRIM COVER	1
14	10-37-0045	CAPACITY LABEL	1
<u>FOR CATALOG NOS. 9565, 9567 &amp; 9568</u>			
1	23-30-0520	1 HP 115/230V 60 HZ MOTOR	1
3	42-92-1345	TRIM COVER	1
14	10-37-0055	CAPACITY LABEL	1
<u>FOR CATALOG NO. 9566</u>			
1	23-30-0525	1 HP 230/460V 3 PHASE MOTOR	1
3	42-92-1345	TRIM COVER	1
14	10-37-0055	CAPACITY LABEL	1
<u>FOR CATALOG NOS. 9570, 9572 &amp; 9573</u>			
1	23-30-0520	1 HP 115/230V 60 HZ MOTOR	1
3	42-92-1345	TRIM COVER	1
14	10-37-0065	CAPACITY LABEL	1
<u>FOR CATALOG NO. 9571</u>			
1	23-30-0525	1 HP 230/460V 3 PHASE MOTOR	1
3	42-92-1345	TRIM COVER	1
14	10-37-0065	CAPACITY LABEL	1
FIG.	PART NO.	DESCRIPTION OF PART	QTY.
2	06-95-0095	COVER SCREW	7
4	43-76-0495	TRANSMISSION HOUSING	1
5	43-44-0825	TRANSMISSION CASE GASKET	1
6	42-92-0675	TRANSMISSION COVER	1
7	43-44-0835	ELECTRICAL COVER GASKET	1
8	22-68-0235	ELECTRICAL COVER	1
9	06-95-5715	HOOK RETAINER SCREW	1
10	14-36-0145	TOP HOOK ASSEMBLY	1
10A	14-36-0155	SWIVEL HOOK (ACCESSORY)	1
11	14-47-0145	LATCH KIT ASSEMBLY	1
12	44-86-0670	HOOK RETAINER	1
13	10-37-0070	TOOL LABEL	2



**FIG. PART NO. DESCRIPTION OF PART QTY.**

FOR CATALOG NOS. 9560, 9561 & 9562

1 23-30-0515 1/2 HP 115/230V 60 HZ MOTOR 1

FOR CATALOG NOS. 9565, 9567, 9568, 9570, 9572 & 9573

1 23-30-0520 1 HP 115/230V 60 HZ MOTOR 1

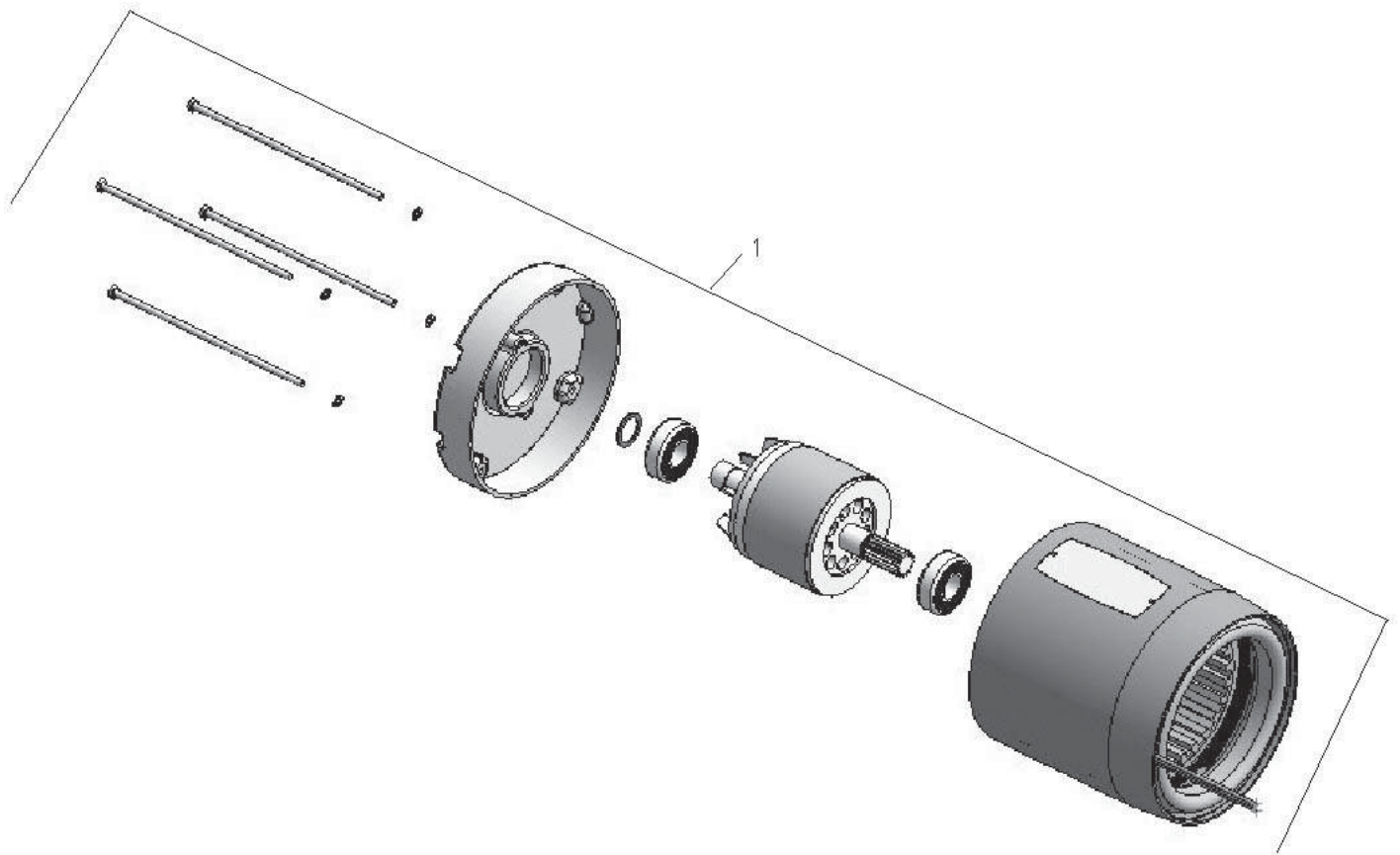


FIG.	PART NO.	DESCRIPTION OF PART	QTY.
<u>FOR CATALOG NOS. 9566 &amp; 9571</u>			
1	23-30-0525	1 HP 230/460V, 3 PHASE MOTOR	1

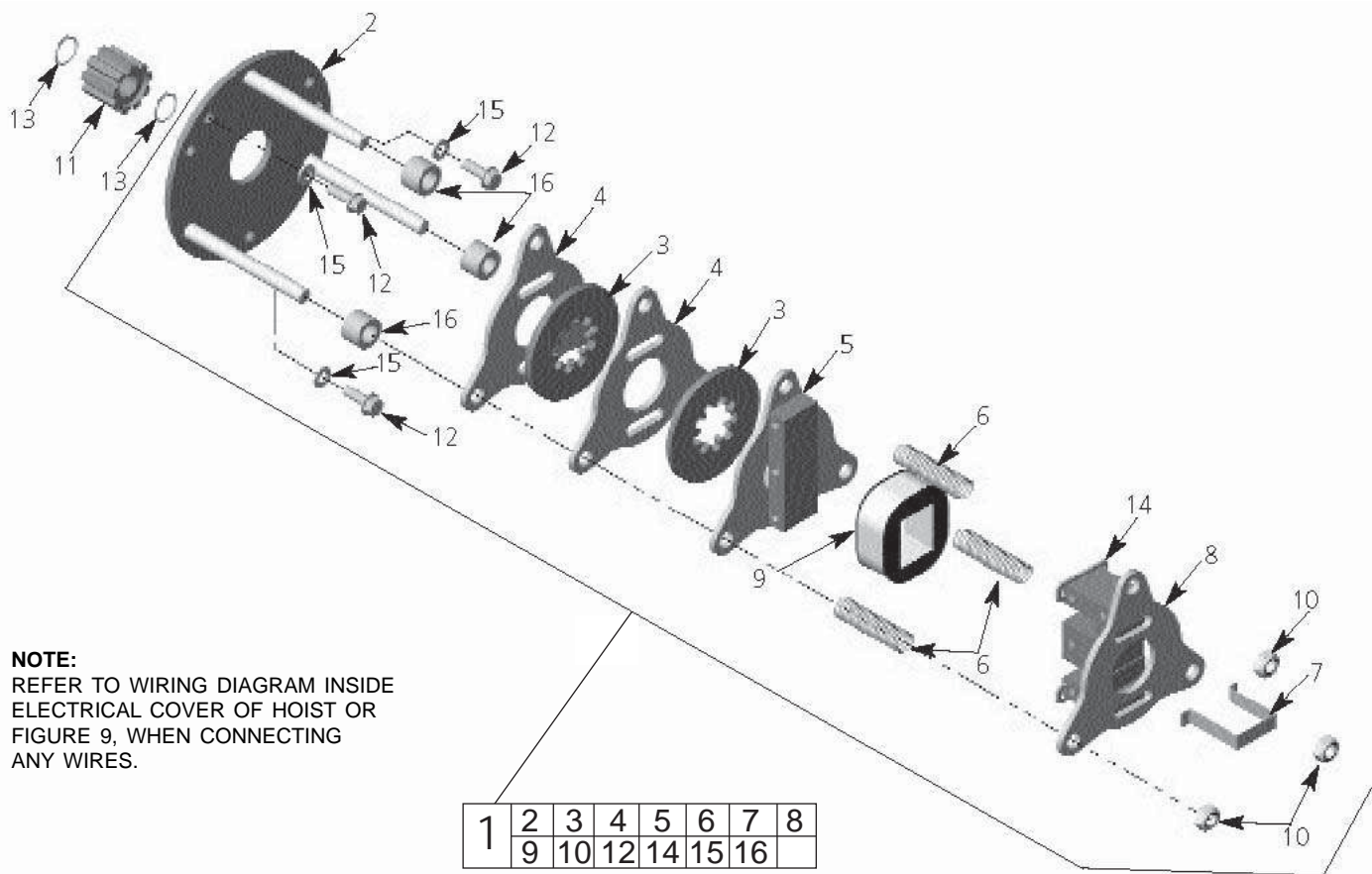


FIG.	PART NO.	DESCRIPTION OF PART	QTY.
2	14-67-0235	PLATE & STUD ASSEMBLY	1
4	44-66-5660	BRAKE PLATE	2
5	14-67-0240	PLATE & ARMATURE ASSEMBLY	1
6	40-50-8110	SPRING	3
7	44-86-0500	RETAINER	1
8	14-67-0250	PLATE & FRAME ASSEMBLY	1
10	06-57-3978	LOCKNUT	1
11	42-04-3575	BRAKE ADAPTER	1
12	06-95-0095	SCREW	3
13	34-60-1400	RETAINING RING	2
14	22-51-0230	SHADING COIL	2
15	06-97-2600	1/4" INT-TOOTH LOCKWASHER	3
	42-56-7812	COIL ADHESIVE (NOT SHOWN)	1

FOR CATALOG NOS. 9560, 9561 & 9562

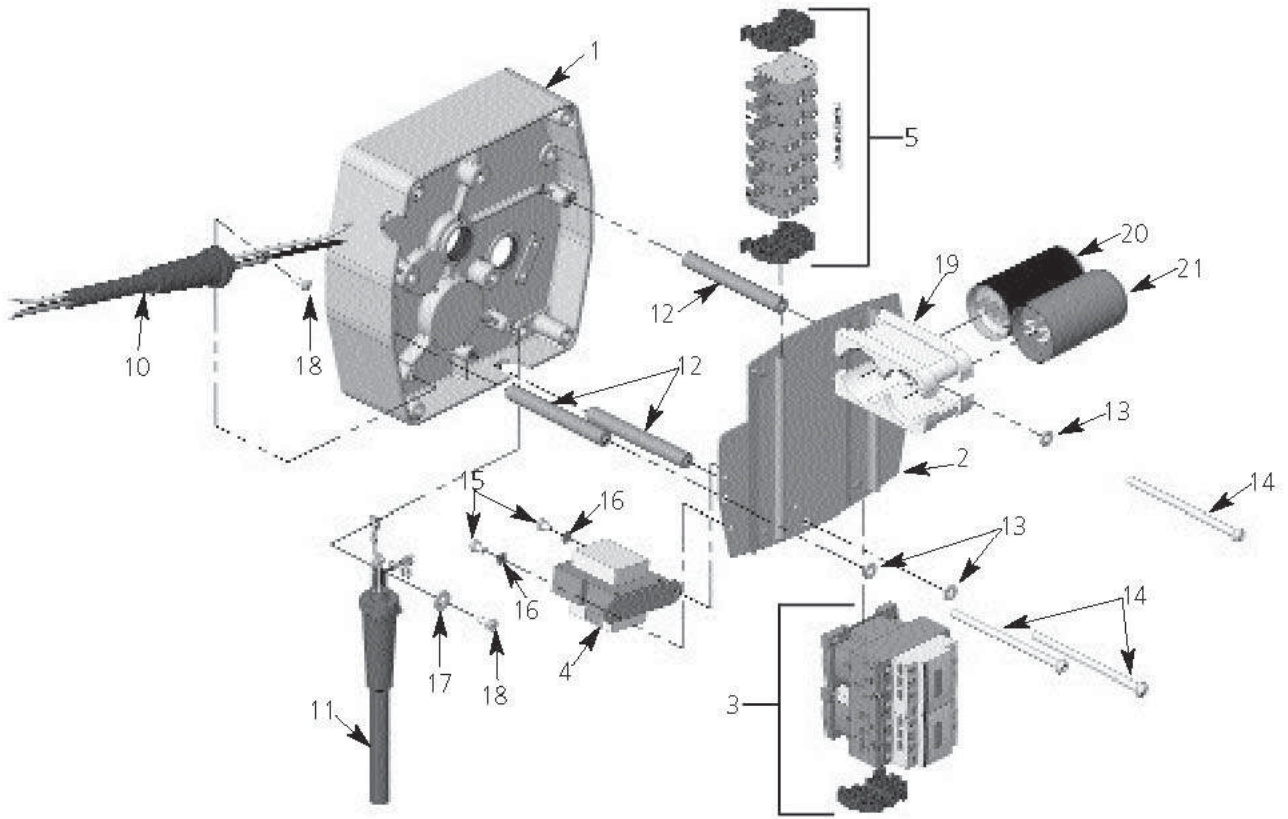
FIG.	PART NO.	DESCRIPTION OF PART	QTY.
1	14-04-0065	DISC BRAKE 1/2 HP	1
3	43-06-0580	BRAKE DISC 1/2 HP	2
9	22-51-0240	BRAKE COIL, 115V	1
16	45-36-1360	SPACER 1/2 HP	3

FOR CATALOG NOS. 9565, 9567, 9568, 9570, 9572, & 9573

FIG.	PART NO.	DESCRIPTION OF PART	QTY.
1	14-04-0075	DISC BRAKE 1 HP	1
3	43-06-0580	BRAKE DISC 1 HP	3
9	22-51-0240	BRAKE COIL, 115V	1

FOR CATALOG NOS. 9566 & 9571

FIG.	PART NO.	DESCRIPTION OF PART	QTY.
1	14-04-0085	DISC BRAKE 1 HP, 230V	1
3	43-06-0580	BRAKE DISC 1 HP	3
9	22-51-0250	BRAKE COIL, 230V	1



FOR CATALOG NOS. 9560, 9561 & 9562

FIG.	PART NO.	DESCRIPTION OF PART	QTY.
1	42-92-0675	TRANSMISSION COVER	1
2	44-66-1015	PANEL PLATE	1
11A	22-64-2250	CONTROL CABLE ASSEMBLY, 6 FT	1
11B	22-64-2255	CONTROL CABLE ASSEMBLY, 11 FT	1
11C	22-64-2260	CONTROL CABLE ASSEMBLY, 16 FT	1
12	45-36-1630	PANEL STANDOFF	3
13	06-97-2600	1/4" INT-TOOTH LOCKWASHER	3
14	06-81-5020	1/4-20UNC X 4" SCREW	3
15	06-81-4564	8-32UNC X 5/16" SCREW	2
16	06-97-4158	#8 EXT-TOOTH LOCKWASHER	2
17	45-88-5220	1/4" FLATWASHER	1
18	06-95-0338	10-24UNC X 1/2" SCREW	2
19	42-36-1930	CAN MOUNTING BRACKET	2
20	23-66-2525	SINPAC STARTING SWITCH	1
21	22-33-0570	CAPACITOR	1

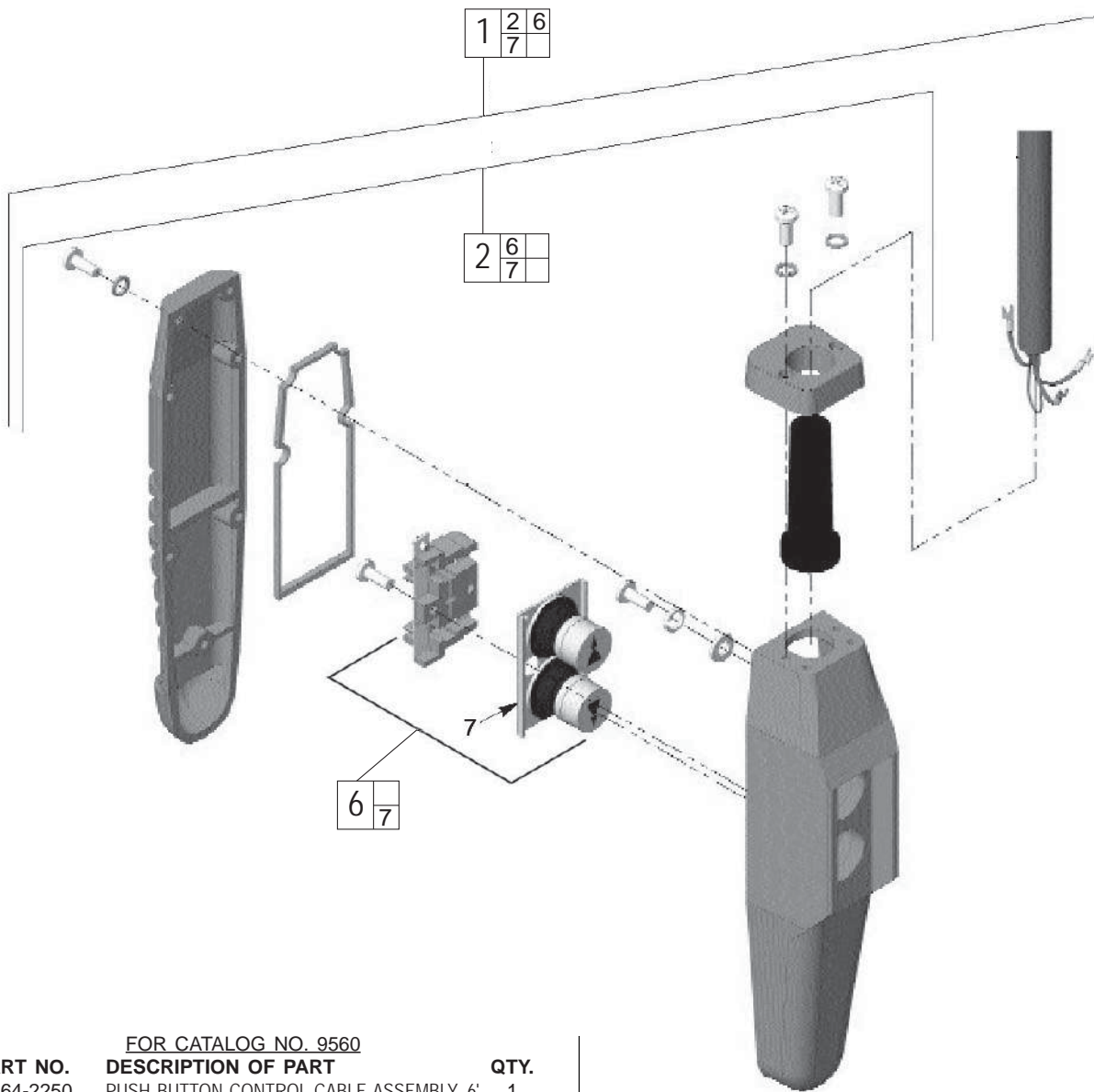
FIG.	PART NO.	DESCRIPTION OF PART	QTY.
3	22-06-0050	REVERSING CONTACTOR KIT, 1/2 HP	1
4	23-81-0510	TRANSFORMER 115V:24V	1
5	22-56-0930	TERMINAL BLOCK KIT 115V / 230V	1
10	22-64-1280	POWER CORD 1/2 HP	1

FOR CATALOG NOS. 9565, 9567, 9568, 9570, 9572, & 9573

FIG.	PART NO.	DESCRIPTION OF PART	QTY.
3B	22-06-0060	REVERSING CONTACTOR KIT, 1HP,1PH	1
4	23-81-0510	TRANSFORMER 115V:24V	1
5	22-56-0930	TERMINAL BLOCK KIT 115V / 230V	1
10	22-64-1285	POWER CORD 1 HP, 1PH	1

FOR CATALOG NOS. 9566 & 9571

FIG.	PART NO.	DESCRIPTION OF PART	QTY.
3	22-06-0070	REVERSING CONTACTOR KIT, 1HP,3PH	1
4	23-81-0520	TRANSFORMER 230V:24V	1
5	22-56-0935	TERMINAL BLOCK KIT 230V / 460V	1
10	22-64-1290	POWER CORD 1 HP, 3 PH	1



FOR CATALOG NO. 9560

FIG.	PART NO.	DESCRIPTION OF PART	QTY.
1	22-64-2250	PUSH BUTTON CONTROL CABLE ASSEMBLY, 6'	1
2	43-76-0700	PUSH BUTTON STATION ASSEMBLY	1
6	22-58-0260	CONTACT ASSEMBLY	1
7	42-42-0510	BUTTON ASSEMBLY	1

FOR CATALOG NO. 9561

FIG.	PART NO.	DESCRIPTION OF PART	QTY.
1	22-64-2255	PUSH BUTTON CONTROL CABLE ASSEMBLY, 11'	1
2	43-76-0700	PUSH BUTTON STATION ASSEMBLY	1
6	22-58-0260	CONTACT ASSEMBLY	1
7	42-42-0510	BUTTON ASSEMBLY	1

FOR CATALOG NOS. 9562

FIG.	PART NO.	DESCRIPTION OF PART	QTY.
1	22-64-2260	PUSH BUTTON CONTROL CABLE ASSEMBLY, 16'	1
2	43-76-0700	PUSH BUTTON STATION ASSEMBLY	1
6	22-58-0260	CONTACT ASSEMBLY	1
7	42-42-0510	BUTTON ASSEMBLY	1

FOR CATALOG NOS. 9565 & 9566

FIG.	PART NO.	DESCRIPTION OF PART	QTY.
1	22-64-2250	PUSH BUTTON CONTROL CABLE ASSEMBLY, 6'	1
2	43-76-0700	PUSH BUTTON STATION ASSEMBLY	1
6	22-58-0260	CONTACT ASSEMBLY	1
7	42-42-0510	BUTTON ASSEMBLY	1

FOR CATALOG NO. 9567

FIG.	PART NO.	DESCRIPTION OF PART	QTY.
1	22-64-2255	PUSH BUTTON CONTROL CABLE ASSEMBLY, 11'	1
2	43-76-0700	PUSH BUTTON STATION ASSEMBLY	1
6	22-58-0260	CONTACT ASSEMBLY	1
7	42-42-0510	BUTTON ASSEMBLY	1

FOR CATALOG NO. 9568

FIG.	PART NO.	DESCRIPTION OF PART	QTY.
1	22-64-2260	PUSH BUTTON CONTROL CABLE ASSEMBLY, 16'	1
2	43-76-0700	PUSH BUTTON STATION ASSEMBLY	1
6	22-58-0260	CONTACT ASSEMBLY	1
7	42-42-0510	BUTTON ASSEMBLY	1

FOR CATALOG NO. 9570 & 9571

FIG.	PART NO.	DESCRIPTION OF PART	QTY.
1	22-64-2250	PUSH BUTTON CONTROL CABLE ASSEMBLY, 6'	1
2	43-76-0700	PUSH BUTTON STATION ASSEMBLY	1
6	22-58-0260	CONTACT ASSEMBLY	1
7	42-42-0510	BUTTON ASSEMBLY	1

FOR CATALOG NO. 9572

FIG.	PART NO.	DESCRIPTION OF PART	QTY.
1	22-64-2255	PUSH BUTTON CONTROL CABLE ASSEMBLY, 11'	1
2	43-76-0700	PUSH BUTTON STATION ASSEMBLY	1
6	22-58-0260	CONTACT ASSEMBLY	1
7	42-42-0510	BUTTON ASSEMBLY	1

FOR CATALOG NO. 9573

FIG.	PART NO.	DESCRIPTION OF PART	QTY.
1	22-64-2260	PUSH BUTTON CONTROL CABLE ASSEMBLY, 16'	1
2	43-76-0700	PUSH BUTTON STATION ASSEMBLY	1
6	22-58-0260	CONTACT ASSEMBLY	1
7	42-42-0510	BUTTON ASSEMBLY	1

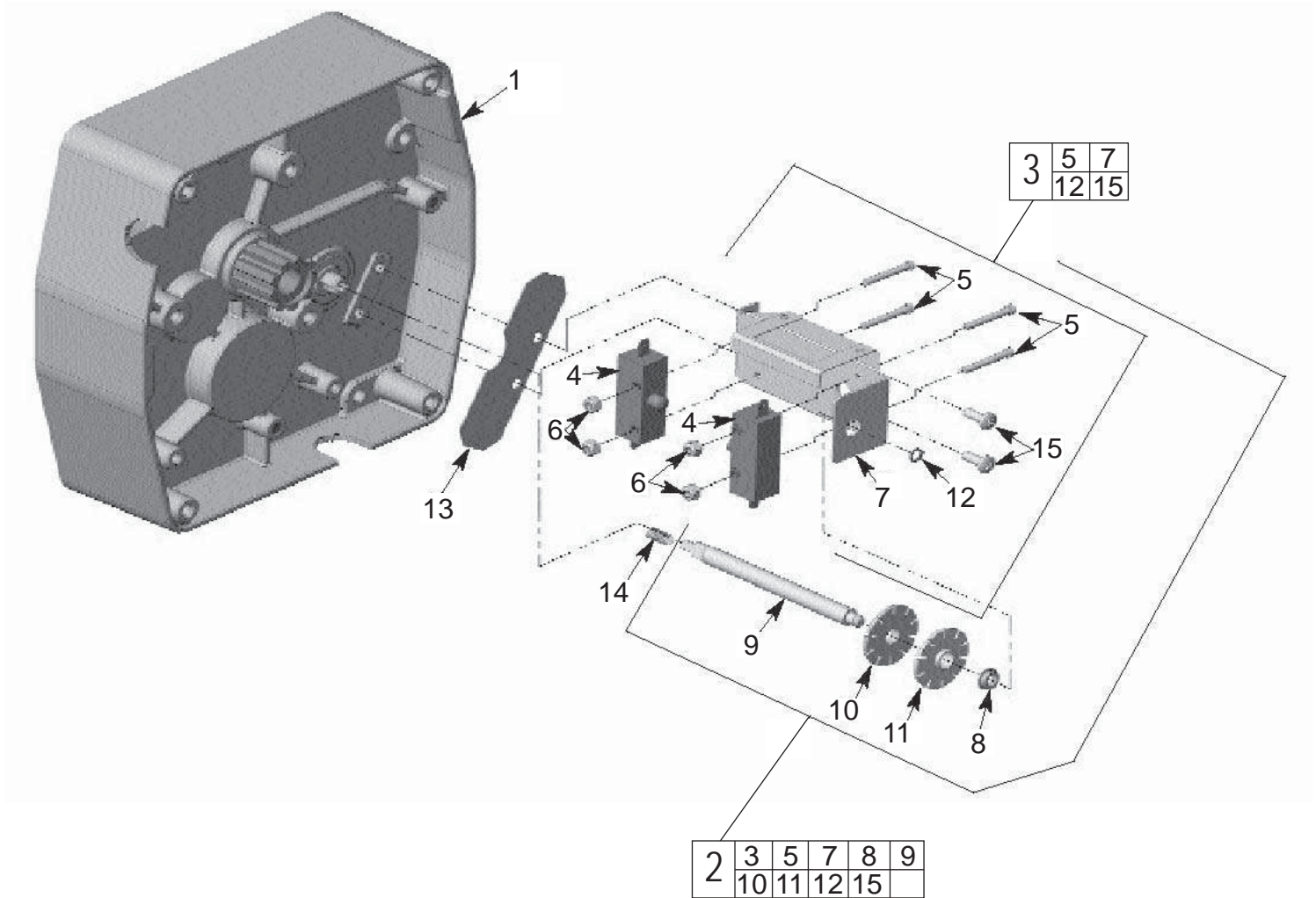
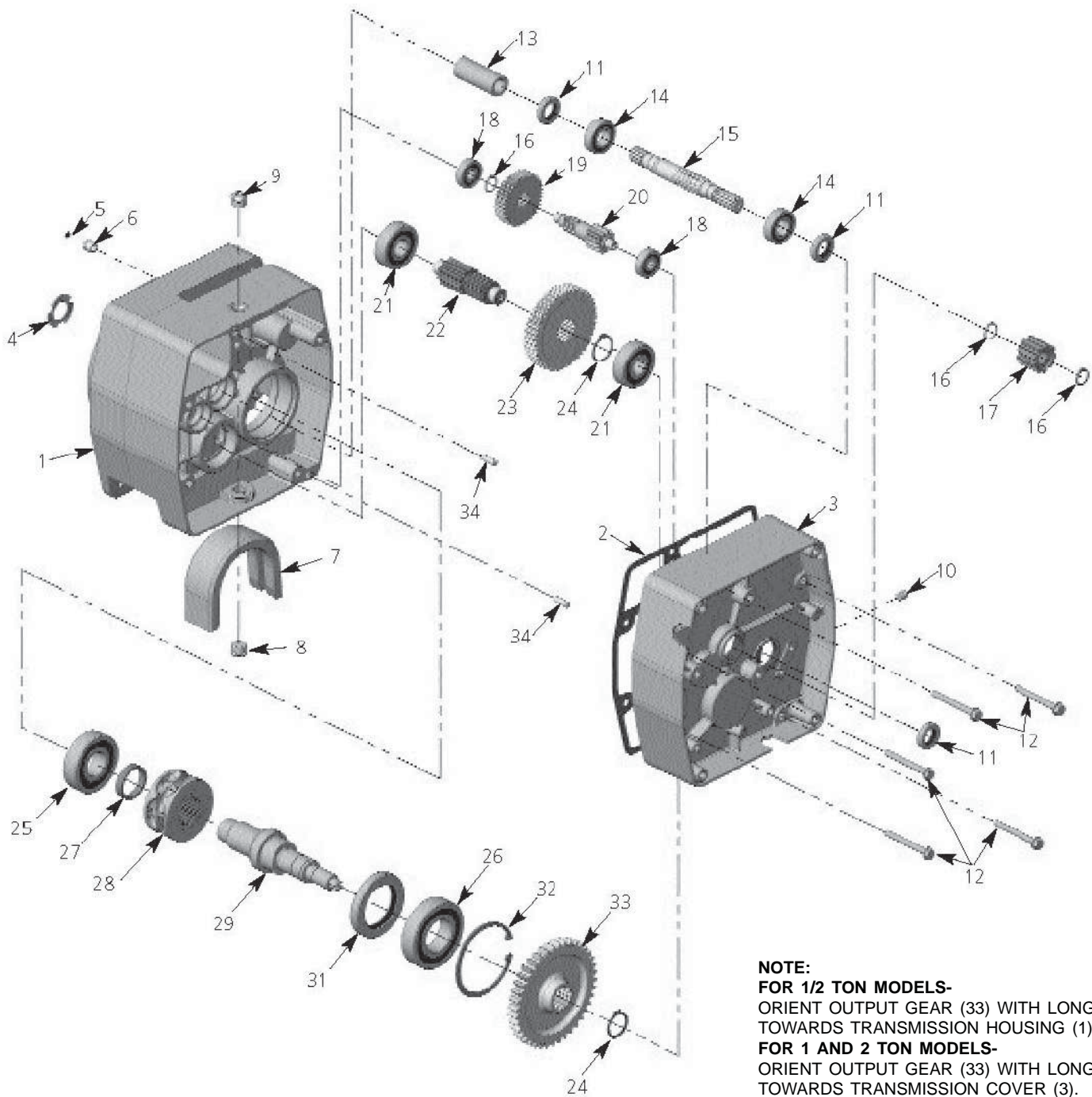


FIG.	PART NO.	DESCRIPTION OF PART	QTY.
1	42-92-0675	TRANSMISSION COVER	1
2	14-73-0210	LIMIT SWITCH ASSEMBLY	1
3	14-78-0340	LIMIT SWITCH BRACKET ASSEMBLY	1
4	23-66-1550	SWITCH	2
5	06-81-0725	6-32UNC X 1" SCREW	4
6	06-57-6059	6-32UNC ELASTIC NUT	4
7	23-66-1555	LIMIT SWITCH BRACKET	1
8	42-40-0910	BUSHING	1
9	45-08-0280	LIMIT SWITCH SHAFT	1
10	44-40-0641	SWITCH NUT (SILVER)	1
11	44-40-0636	SWITCH NUT (GOLD)	1
12	34-60-0510	RETAINING RING	1
13	43-86-0130	INSULATOR	1
14	40-50-8090	SPRING	1
15	06-95-0338	10-24-UNC X 1/2" SCREW	2



**NOTE:**  
**FOR 1/2 TON MODELS-**  
 ORIENT OUTPUT GEAR (33) WITH LONG BOSS  
 TOWARDS TRANSMISSION HOUSING (1).  
**FOR 1 AND 2 TON MODELS-**  
 ORIENT OUTPUT GEAR (33) WITH LONG BOSS  
 TOWARDS TRANSMISSION COVER (3).

FIG.	PART NO.	DESCRIPTION OF PART	QTY.
1	43-76-0495	TRANSMISSION HOUSING	1
2	43-44-0825	TRANSMISSION CASE GASKET	1
3	42-92-0675	TRANSMISSION COVER	1
4	40-50-8100	SPRING WASHER	1
5	34-40-4560	O-RING	1
6	43-33-0530	PRESSURE RELIEF FITTING	1
7	43-56-0765	CHAIN GUIDE	1
8	44-68-0610	OIL PLUG-DRAIN	1
9	44-68-0620	OIL PLUG-FILL	1
10	44-68-0630	OIL PLUG-LEVEL	1
11	45-06-0415	OIL SEAL	3
12	06-95-5720	SCREW, HWH SELF-THD	5
13	42-90-0245	MOTOR COUPLING	1
14	02-04-1705	BEARING	2
15	32-60-2320	INPUT SHAFT	1
16	34-60-1400	RETAINING RING	3
17	42-04-3577	BRAKE ADAPTER	1
18	02-04-1030	BEARING	2
19	32-60-2325	HIGH SPEED PINION	1
21	02-04-1770	BEARING	2
22	32-60-2340	OUTPUT PINION	1
24	34-60-2480	RETAINING RING	2
25	02-04-2305	BEARING	1

FIG.	PART NO.	DESCRIPTION OF PART	QTY.
26	02-04-2310	BEARING	1
27	45-36-1625	SPACER LOAD SHEAVE	1
28	45-11-0120	LOAD SHEAVE 9/32" CHAIN	1
29	36-50-0020	OUTPUT SHAFT ASSEMBLY	1
31	45-06-0425	OIL SEAL	1
32	34-60-2600	RETAINING RING	1
33	32-60-2315	OUTPUT GEAR	1
34	06-65-3515	DOWEL PIN	2

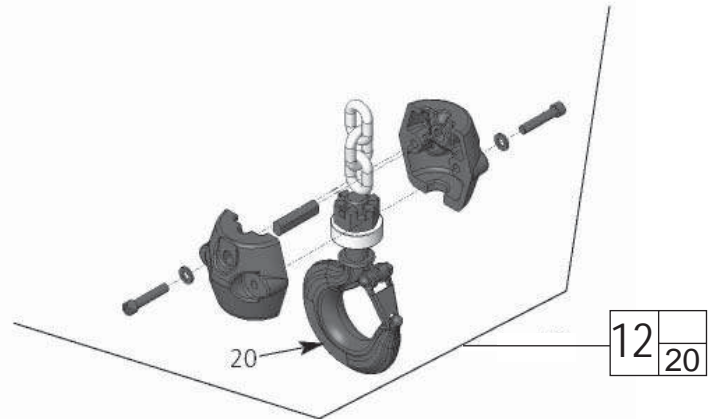
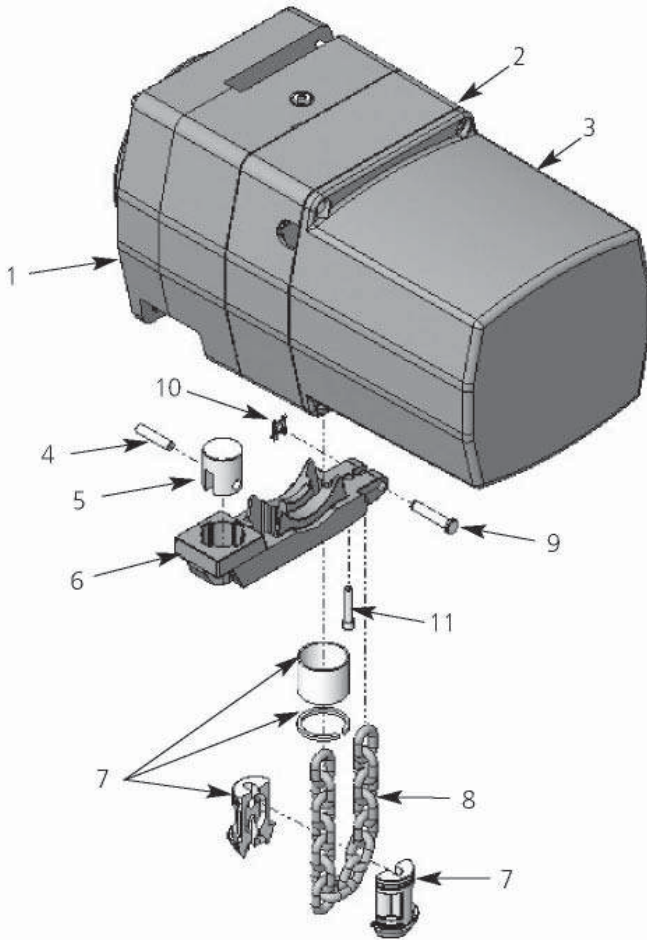
FOR CATALOG NOS. 9560, 9561 & 9562

FIG.	PART NO.	DESCRIPTION OF PART	QTY.
20	32-60-2330	INTER. PINION, 1/2 TON	1
23	14-08-0150	OVERLOAD CLUTCH ASSY, 1/2 TON	1

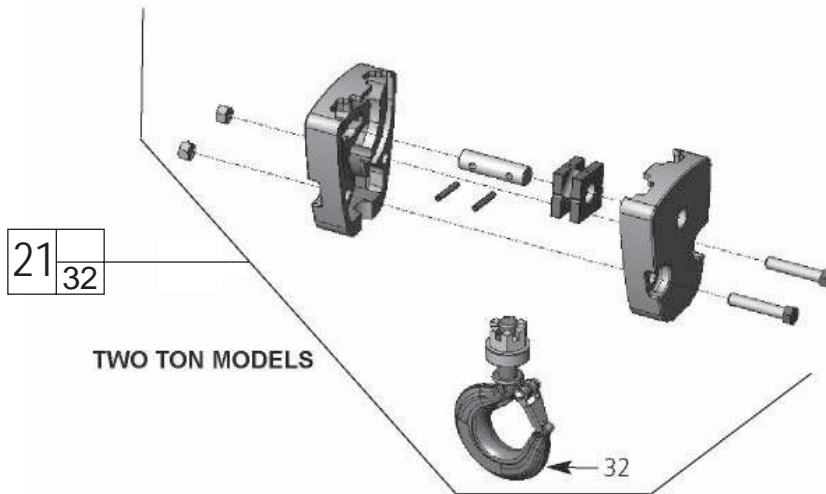
FOR CAT. NOS. 9565, 9566, 9567, 9568, 9570, 9571, 9572 & 9573

FIG.	PART NO.	DESCRIPTION OF PART	QTY.
20	32-60-2335	INTER. PINION, 1 & 2 TON	1
23	14-08-0160	OVERLOAD CLUTCH ASSY, 1 & 2 TON	1



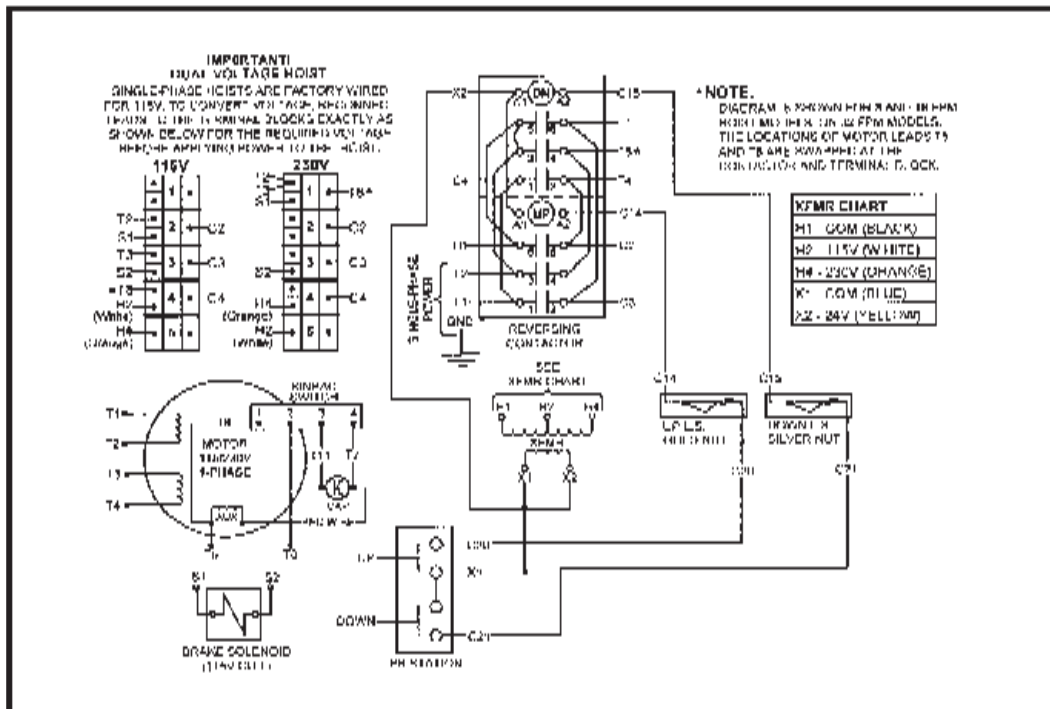


1/2 TON AND 1 TON MODELS

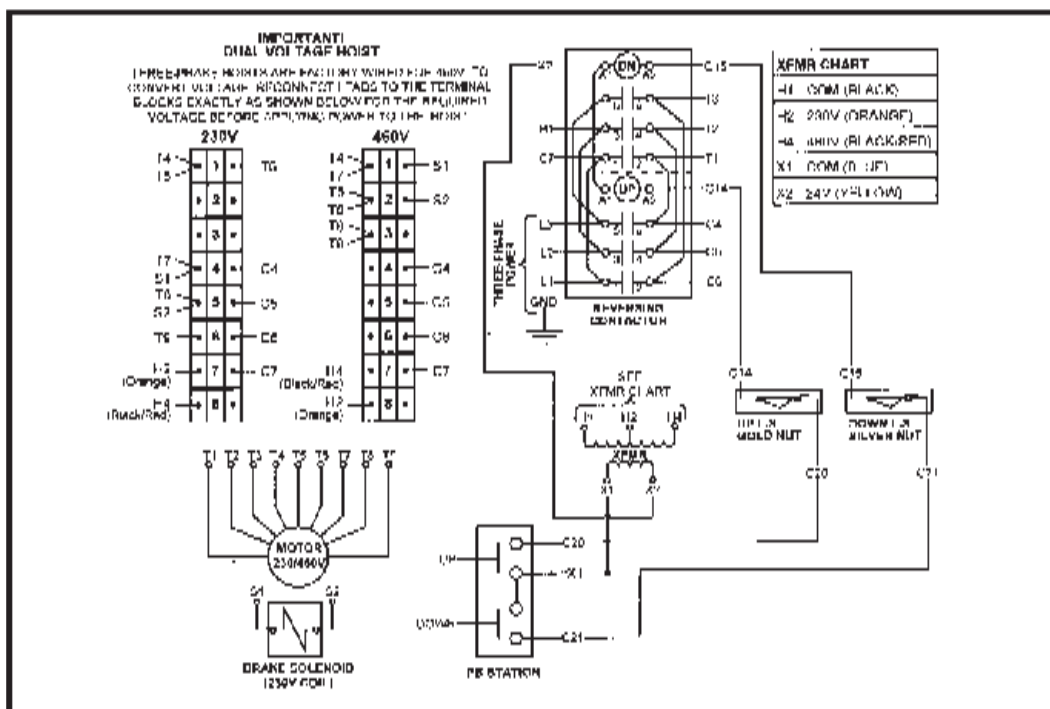


TWO TON MODELS

FIG.	PART NO.	DESCRIPTION OF PART	QTY.
1	43-76-0495	TRANSMISSION HOUSING	1
2	42-92-0675	TRANSMISSION COVER	1
3	22-68-0235	ELECTRICAL COVER	1
4	44-60-1780	ANCHOR PIN (2 TON ONLY)	1
5	44-60-1785	ANCHOR (2 TON ONLY)	1
6	43-56-0770	CHAIN STRIPPER	1
7	14-47-1250	CHAIN STOP KIT	1
9	44-60-1790	ATTACHMENT PIN	1
10	44-86-0675	RETAINING CLIP	1
11	06-81-0090	1/4-20UNC X 1-1/4" SHCS	1
12	42-28-0290	BOTTOM BLOCK ASSY 1/2 & 1 TON	1
20	14-36-0180	BOTTOM HOOK ASSY 1/2 & 1 TON	1
21	14-47-0620	BOTTOM BLOCK ASSY 2 TON	1
32	14-36-0170	BOTTOM HOOK ASSY 2 TON	1



Wiring Diagram for 1-Speed, 1-Phase Models



Wiring Diagram for 1-Speed, 3-Phase Models