

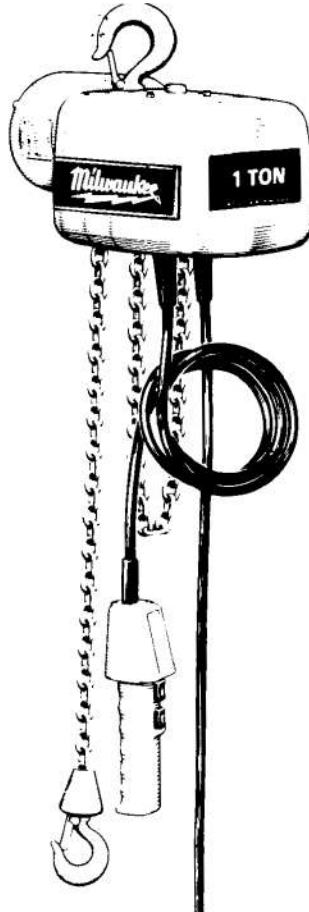
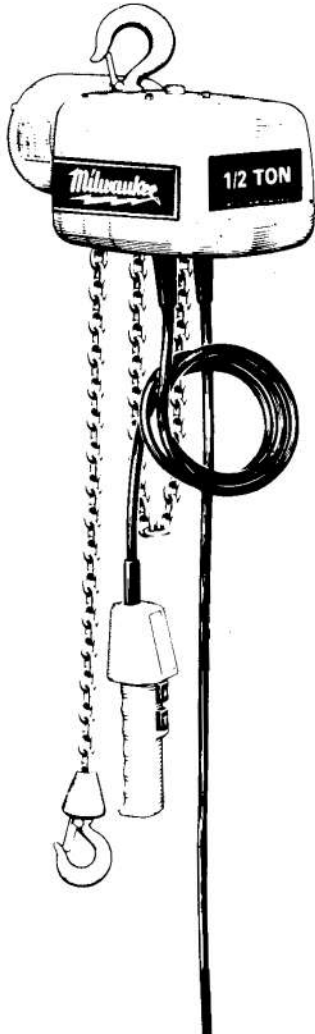


**BULLETIN NO.  
54-02-1200**

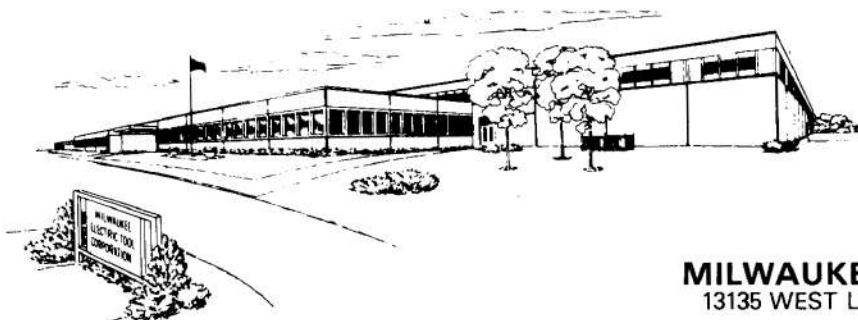
DATE CODE	486	REVISED BULLETIN	
-----------	-----	------------------	--

## SERVICE PARTS LIST

**CATALOG NO.  
9560, 9561, 9562,  
9565, 9566, 9567, 9568, 9570,  
9571, 9572 and 9573**



## ELECTRIC CHAIN HOISTS



**MILWAUKEE ELECTRIC TOOL CORPORATION**  
13135 WEST LISBON ROAD, BROOKFIELD, WISCONSIN 53005

**SPECIFY CATALOG NO. AND SERIAL NO. WHEN ORDERING PARTS**

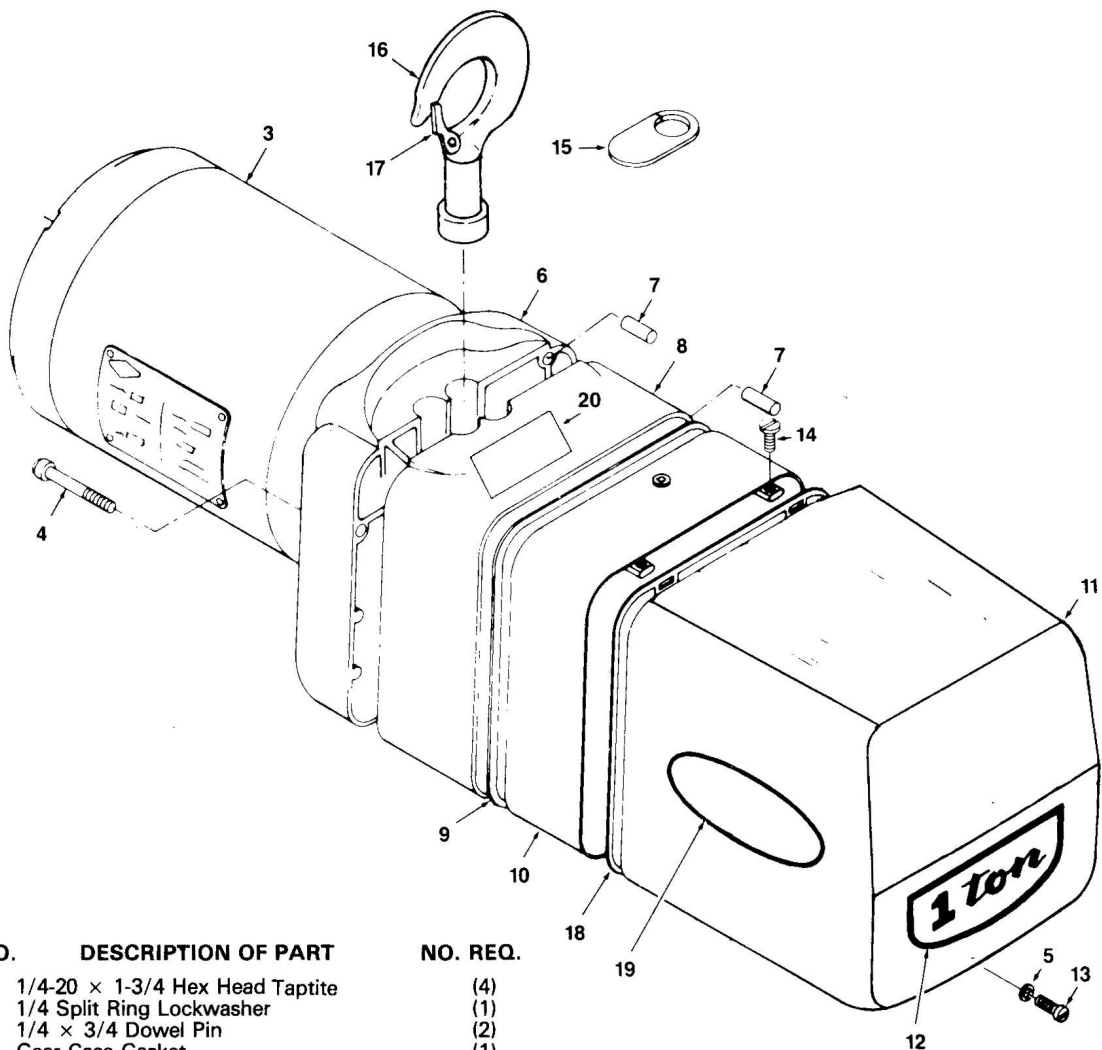


FIG.	PART NO.	DESCRIPTION OF PART	NO. REQ.
	4	06-95-5655 1/4-20 x 1-3/4 Hex Head Taptite	(4)
	5	06-97-4000 1/4 Split Ring Lockwasher	(1)
	7	06-65-3515 1/4 x 3/4 Dowel Pin	(2)
	9	43-44-0820 Gear Case Gasket	(1)
	10	42-92-0665 Gear Box Cover	(1)
	11	22-68-0220 Cover - Electrical	(1)
	13	06-95-0326 1/4-20 x 3/4 Slotted Fillister Hd. Screw	(1)
	14	06-95-0338 10-24 x 1/2 Pan Hd. Taptite	(2)
	15	42-92-0670 Hook Hole Cover	(1)
	16	14-36-0140 Hook Assembly with Latch	(1)
	17	14-47-0590 Latch Kit	(1)
	18	43-44-0830 Cover Gasket	(1)
	19	10-37-0070 Milwaukee Label	(2)
	20	10-98-6590 Warning Label	(1)

For Catalog No. 9560, 9561 & 9562

	3	23-30-0210 1/2 HP 115/230V 60 HZ Motor	(1)
	6	43-76-0470 Sheave Housing	(1)
	8	43-76-0480 Gear Housing	(1)
	12	10-37-0040 1/2 Ton Capacity Label	(1)
		<u>For Catalog No. 9565, 9567, 9568</u>	
	3	23-30-0220 1 HP 115/230V, 60 HZ Motor	(1)
	6	43-76-0510 Sheave Housing	(1)
	8	43-76-0490 Gear Housing	(1)
	12	10-37-0050 1 Ton Capacity Label	(1)

For Catalog No. 9566

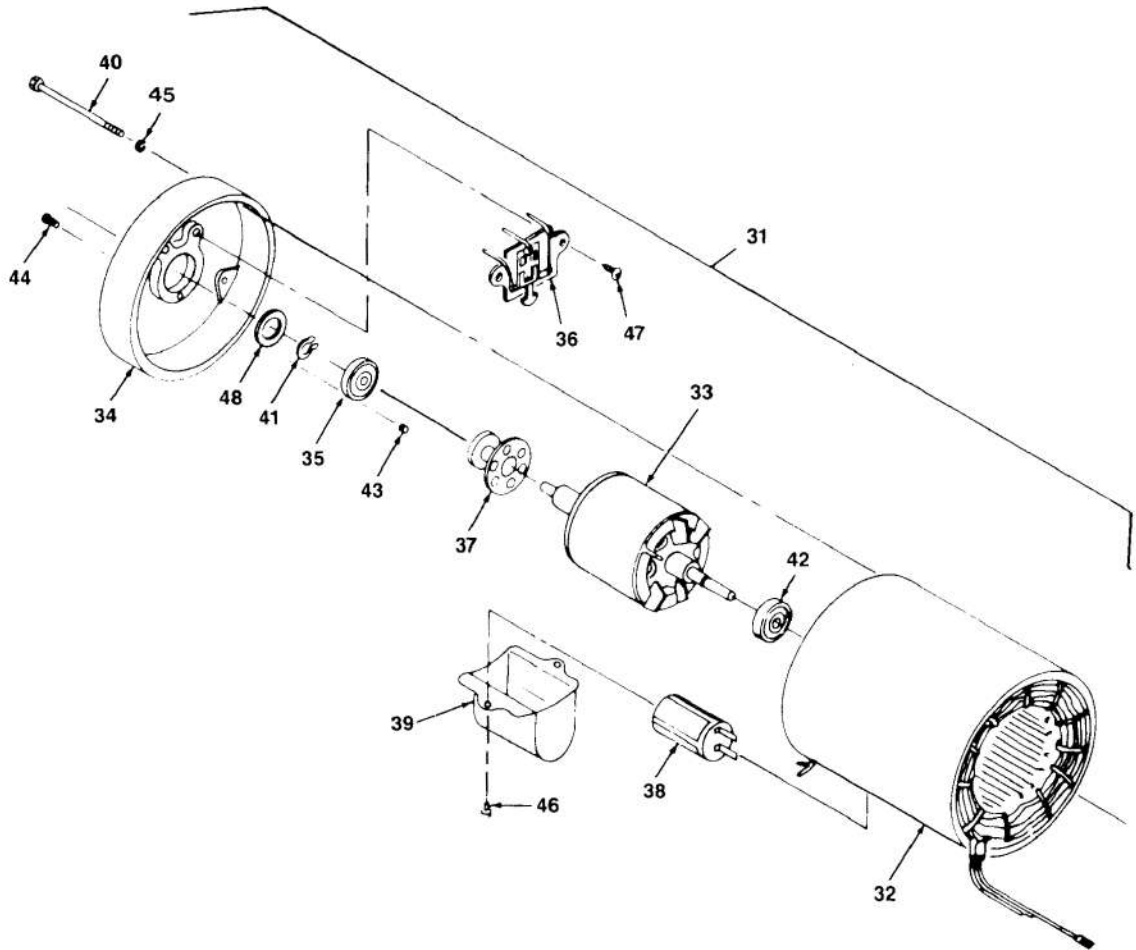
	3	23-30-0230 1 HP 230/460 V. 3 Phase Motor	(1)
	6	43-76-0510 Sheave Housing	(1)
	8	43-76-0490 Gear Housing	(1)
	2	10-38-0050 1 Ton Capacity Label	(1)

For Catalog No. 9570, 9572 & 9573

	3	23-30-0220 1 HP 115/230 V. 60 HZ Motor	(1)
	6	43-76-0510 Sheave Housing	(1)
	8	43-76-0490 Gear Housing	(1)
	12	10-37-0060 2 Ton Capacity Label	(1)

For Catalog No. 9571

	3	23-30-0230 1 HP 230/460 V. 3 Phase Motor	(1)
	6	43-76-0510 Sheave Housing	(1)
	8	43-76-0490 Gear Housing	(1)
	12	10-37-0060 2 Ton Capacity Label	(1)

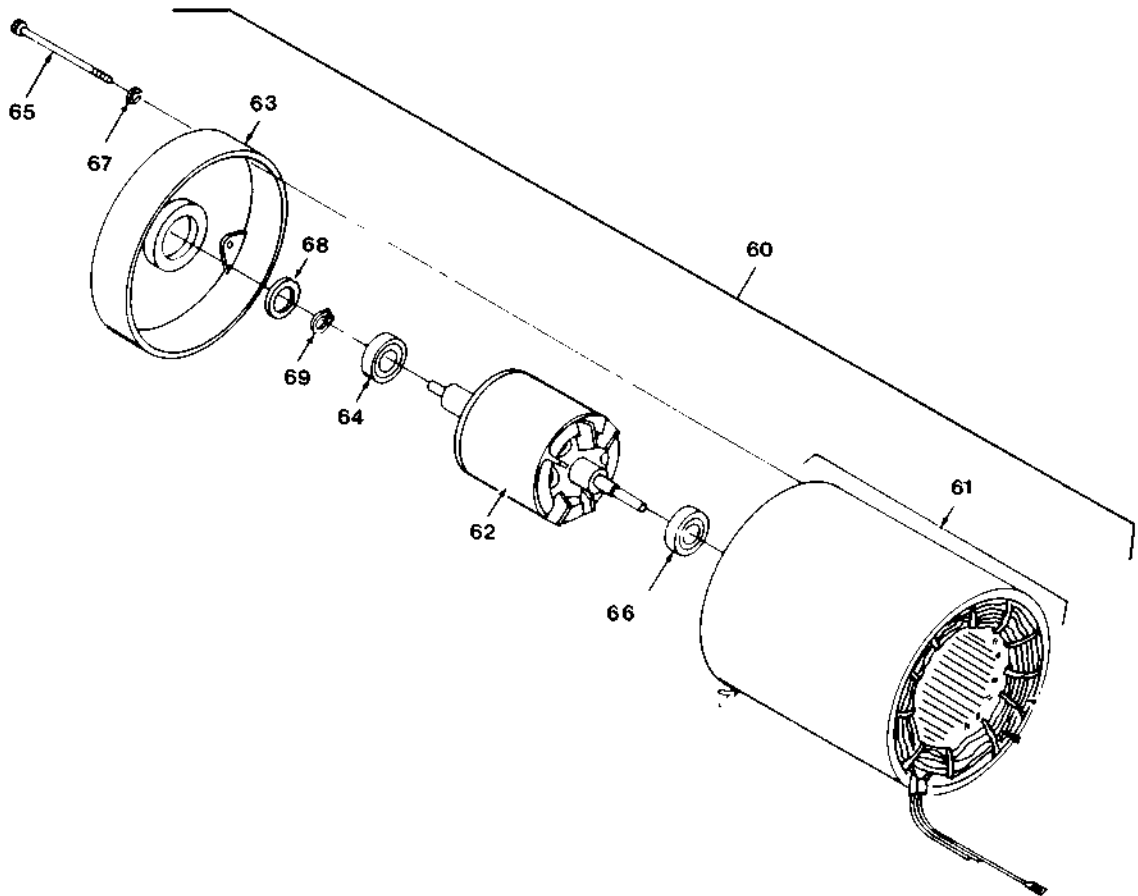


**LEESON MOTOR**

**DOERR MOTOR**

FIG.	PART NO.	DESCRIPTION OF PART	NO. REQ.
32		Not Available	
33		Not Available	
34	45-12-0420	End Shield	(1)
35	02-04-1745	Ball Bearing	(1)
36	23-66-1640	Stationary Switch	(1)
37	23-66-1645	Rotating Switch	(1)
41	34-60-1250	Retaining Ring	(1)
42	02-04-1701	Ball Bearing	(1)
45	06-97-3500	#10 Split Ring Lock Washer	(4)
46	06-81-4564	#8-32 x 3/8 Round Hd. Machine Screw	(2)
47	06-81-4570	#8-32 x 3/8 Round Hd. Machine Screw	(2)
48	45-88-8130	Shim Washer	(1)
<u>For Catalog No. 9560, 9561 &amp; 9562</u>			
31	23-30-0210	1/2 HP 115/230 V 60 HZ Motor	(1)
38	22-33-0370	Capacitor 216-259 Mfd. 120 Vac.	(1)
39	22-68-0240	Capacitor Cover	(1)
40	06-81-3164	#10-32 x 7-3/8 Hex Head Screw	(4)
<u>For Catalog No. 9565, 9567, 9568, 9570, 9572 &amp; 9573</u>			
31	23-30-0220	1 HP 115/230 V. 60 HZ Motor	(1)
38	22-33-0390	Capacitor 400-480 Mfd. 120 Vac.	(1)
39	22-68-0250	Capacitor Cover	(1)
40	06-81-3168	#10-32 x 8-7/8 Hex Head Screw	(4)
Items Not Shown			
42-36-1620		Stationary Switch Mounting Bracket	(1)

FIG.	PART NO.	DESCRIPTION OF PART	NO. REQ.
32		Not Available	
33		Not Available	
34	45-12-0410	End Shield	(1)
35	02-04-1745	Ball Bearing	(1)
36	23-66-1635	Stationary Switch	(1)
37	23-66-1645	Rotating Switch	(1)
39	22-68-0230	Capacitor Cover	(1)
41	34-60-1250	Retaining Ring	(1)
42	02-04-1701	Ball Bearing	(1)
43	06-81-3150	#10-32 x 3/8 Hex Hd. Screw	(1)
45	06-97-3500	#10 Split Ring Lock Washer	(4)
46	06-81-4564	#8-32 x 5/16 Round Hd. Machine Screw	(2)
47	06-81-4553	#6-32 x 3/8 Round Hd. Machine Screw	(2)
48	45-88-8120	Shim Washer	(1)
<u>For Catalog No. 9560, 9561 &amp; 9562</u>			
31	23-30-0210	1/2 HP 115/230V 60 HZ Motor	(1)
38	22-33-0360	Capacitor 375 Mfd 125 Vac	(1)
40	06-81-3162	#10-32 x 7-1/4 Hex Hd. Screw	(4)
<u>For Catalog No. 9565, 9567, 9568, 9570, 9572 &amp; 9573</u>			
31	23-30-0220	1 HP 115/230 V 60 HZ Motor	(1)
38	22-33-0380	Capacitor 455 Mfd 125 Vac	(1)
40	06-81-3166	#10-32 x 8-3/4 Hex Hd. Screw	(4)



### LEESON MOTOR

### DOERR MOTOR

FIG.	PART NO.	DESCRIPTION OF PART	NO. REQ.	FIG.	PART NO.	DESCRIPTION OF PART	NO. REQ.
60	23-30-0230	1 HP 230/460 V, 3 Phase Motor	(1)	60	23-30-0230	1 HP 230/460 V 3 Phase Motor	(1)
61		Not Available		61		Not Available	
62		Not Available		62		Not Available	
63	45-12-0440	End Shield	(1)	63	45-12-0430	End Shield	(1)
64	02-04-1745	Ball Bearing	(1)	64	02-04-1745	Ball Bearing	(1)
65	06-81-3160	#10-32 x 8-3/4 Hex Hd. Screw	(4)	65	06-81-3162	#10-32 x 7-1/4 Hex Hd. Screw	(4)
66	02-04-1701	Ball Bearing	(1)	66	02-04-1701	Ball Bearing	(1)
67	06-97-3500	#10 Split Ring Lock Washer	(4)	67	06-97-3500	#10 Split Ring Lock Washer	(4)
68	45-88-8120	Shim Washer	(1)	68	45-88-8120	Shim Washer	(1)

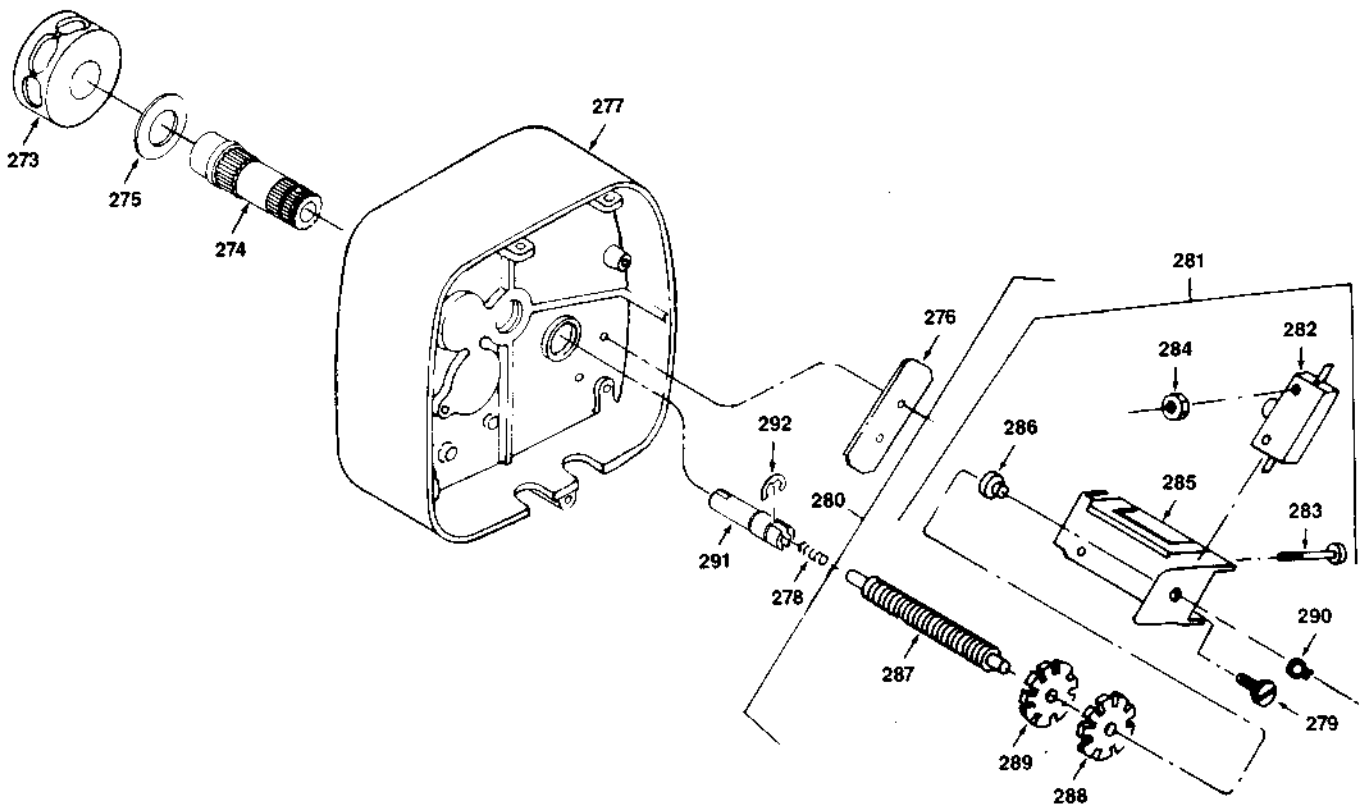


FIG.	PART NO.	DESCRIPTION OF PART	NO. REQ.
	274	36-50-0010 Load Shaft Assembly	(1)
	275	45-36-1340 Chain Spacer	(1)
	276	43-86-0130 Insulator	(1)
	277	42-92-0665 Gear Box Cover	(1)
	278	40-50-8090 Spring	(1)
	279	06-95-0326 #10 - 24 x 3/8 Thread Forming Taptite Screw	(2)
	280	14-73-0210 Limit Switch & Shaft (Incl. Fig. 281 to 290)	(1)
	281	14-78-0340 Limit Switch Assy. (Incl. Fig. 282 to 286)	(1)
	282	23-66-1550 Switch	(2)
	283	06-81-0725 #6-32 x 1 Fillister Head	(4)
	284	06-57-6059 #6 - 32 Locknut	(4)
	285	23-66-1555 Limit Switch	(1)
	286	42-40-0910 Bushing	(1)
	287	45-08-0280 Limit Switch Shaft	(1)
	288	44-40-0635 Limit Switch Nut - Red	(1)
	289	44-40-0640 Limit Switch Nut - Green	(1)
	290	34-60-0510 Retaining Ring	(1)
	291	45-08-0290 Limit Switch Stud Shaft	(1)
	292	34-60-2470 E Ring	(1)
	<u>For Catalog No. 9560, 9561 &amp; 9562</u>		
	273	45-11-0110 Load Sheave	(1)
	<u>For Catalog No. 9565, 9566, 9567, 9568 9570, 9571, 9572 &amp; 9573</u>		
	273	45-11-0120 Load Sheave	(1)

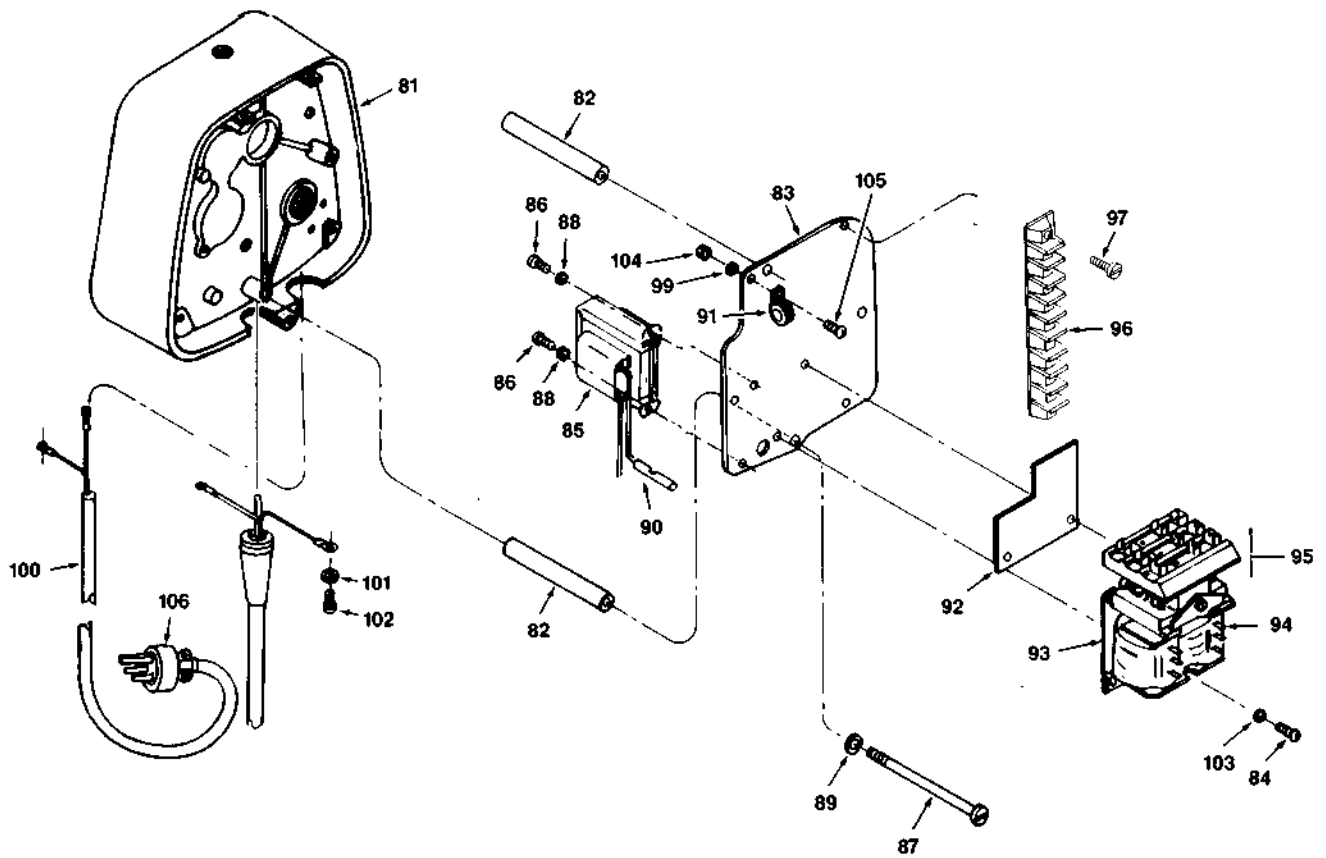


FIG.	PART NO.	DESCRIPTION OF PART	NO. REQ.
	81	42-92-0665 Gear Box Cover	(1)
	82	46-36-1330 Standoff Spacer	(3)
	83	44-66-6650 Electrical Panel Plate	(1)
	84	06-81-1070 #10 - 24 x 3/8 Fillister Head Screw	(3)
	86	06-81-4208 #10 - 24 x 1/4 Pan Head Screw	(2)
	87	06-81-4760 1/4 - 20 - 4-1/4 Round Head Screw	(3)
	88	06-97-1300 #10 External Tooth Lockwasher	(2)
	89	06-97-2600 1/4 Internal Tooth Lockwasher	(3)
	90	22-56-0545 Splice Connector	(1)
	91	42-68-0575 Cable Clamp	(1)
	92	43-86-0140 Insulator	(1)
	93	22-58-0090 Contactor 24 Volt	(1)
	94	22-51-0200 Coil 24 Volt	(1)
	95	14-47-0600 Contactor Service Part Kit	(1)
	97	06-81-5695 #10 - 24 x 5/8 Pan Head Screw	(2)
	99	06-97-3200 #8 Split Ring Lockwasher	(1)
	101	45-88-5220 1/4 Flat Washer	(1)
	102	06-95-0326 #10 - 24 x 3/8 Thread Forming Taptite	(1)
	103	06-97-3400 #10 Split Ring Lockwasher	(3)
	104	06-55-0830 #8 - 32 Hex Nut	(1)
	105	06-81-0910 #8 - 32 x 1/2 Fillister Hd.	(1)
For Catalog No. 9566 & 9571			
	85	23-81-0300 Transformer	(1)
	96	22-56-0570 Connector Terminal Block	(1)
	100	22-64-2890 Cord Set	(1)
For Catalog No. 9560, 9561, 9562, 9565, 9567 9568, 9570, 9572 & 9573			
	85	23-81-0290 Transformer	(1)
	96	22-56-0560 Connector Terminal Block	(1)
	100	22-64-2880 Cord Set	(1)
	106	23-36-0290 3 Prong Plug	(1)

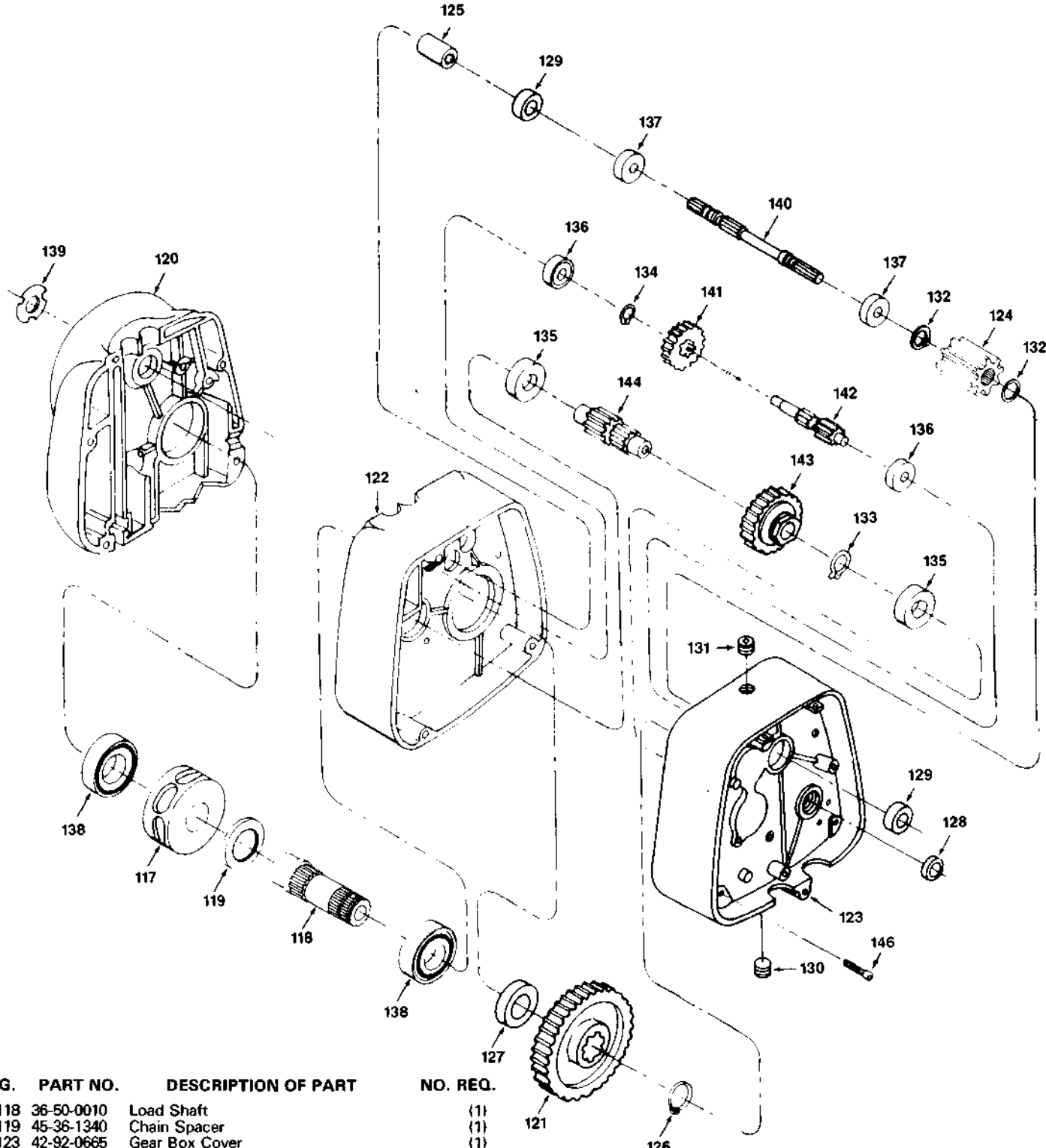


FIG.	PART NO.	DESCRIPTION OF PART	NO. REQ.
	118	36-50-0010 Load Shaft	(1)
	119	45-36-1340 Chain Spacer	(1)
	123	42-92-0665 Gear Box Cover	(1)
	124	42-04-3570 Adapter	(1)
	125	42-90-0240 Motor Coupling	(1)
	126	34-60-2480 Retaining Ring	(1)
	127	45-06-0400 Oil Seal	(1)
	128	45-06-0410 Oil Seal	(1)
	129	45-06-0420 Oil Seal	(2)
	130	44-68-0530 Drain Plug 3/8 N.P.T.	(1)
	131	44-68-0540 Vent Plug	(1)
	132	34-60-1400 Retaining Ring	(2)
	133	34-60-2480 Retaining Ring	(1)
	134	34-60-1400 Retaining Ring	(1)
	135	02-04-1765 Ball Bearing	(2)
	136	02-04-1030 Ball Bearing	(2)
	137	02-04-1705 Ball Bearing	(2)
	138	02-04-2300 Ball Bearing	(2)
	139	40-50-8100 Bearing Spring	(1)
	140	32-60-2320 Driving Pinion	(1)
	141	32-60-2325 High Speed Gear	(1)
	144	32-60-2340 Intermediate Pinion	(1)
	146	06-95-5680 Hex Washer Hd. 1/4 - 20 x 2-1/4 Thread Forming Zinc Plated	(4)

FIG.	PART NO.	DESCRIPTION OF PART	NO. REQ.
For Catalog No. 9560, 9561 & 9562			
	117	45-11-0110 Load Sheave	(1)
	120	43-76-0470 Sheave Housing	(1)
	121	32-60-2310 Out Put Gear	(1)
	122	43-76-0480 Gear Housing	(1)
	142	32-60-2330 High Speed Pinion	(1)
	143	14-08-0150 Overload Clutch Assy.	(1)
For Catalog No. 9565, 9566, 9567, 9568, 9570, 9571, 9572 & 9573			
	117	45-11-0120 Load Sheave	(1)
	120	43-76-0510 Sheave Housing	(1)
	121	32-60-2315 Out Put Gear	(1)
	122	43-76-0490 Gear Housing	(1)
	142	32-60-2335 High Speed Pinion	(1)
	143	14-08-0160 Overload Clutch Assy.	(1)

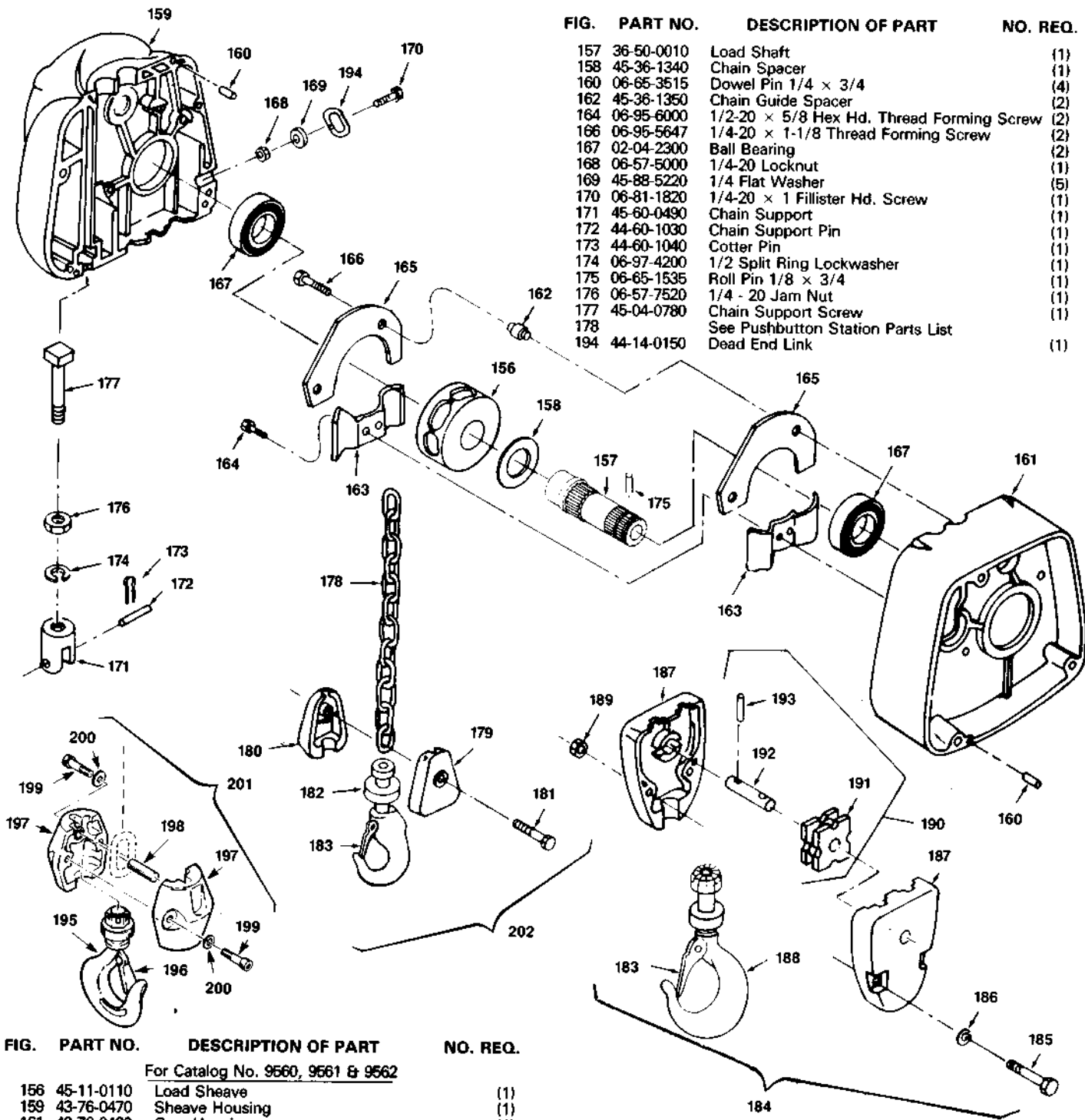


FIG.	PART NO.	DESCRIPTION OF PART	NO. REQ.
	157	36-50-0010 Load Shaft	(1)
	158	45-36-1340 Chain Spacer	(1)
	160	06-65-3515 Dowel Pin 1/4 x 3/4	(4)
	162	45-36-1350 Chain Guide Spacer	(2)
	164	06-95-6000 1/2-20 x 5/8 Hex Hd. Thread Forming Screw	(2)
	166	06-95-5647 1/4-20 x 1-1/8 Thread Forming Screw	(2)
	167	02-04-2300 Ball Bearing	(2)
	168	06-57-5000 1/4-20 Locknut	(1)
	169	45-88-5220 1/4 Flat Washer	(5)
	170	06-81-1820 1/4-20 x 1 Fillister Hd. Screw	(1)
	171	45-60-0490 Chain Support	(1)
	172	44-60-1030 Chain Support Pin	(1)
	173	44-60-1040 Cotter Pin	(1)
	174	06-97-4200 1/2 Split Ring Lockwasher	(1)
	175	06-65-1535 Roll Pin 1/8 x 3/4	(1)
	176	06-57-7520 1/4 - 20 Jam Nut	(1)
	177	45-04-0780 Chain Support Screw	(1)
	178	See Pushbutton Station Parts List	(1)
	194	44-14-0150 Dead End Link	(1)

FIG.	PART NO.	DESCRIPTION OF PART	NO. REQ.
For Catalog No. 9560, 9561 & 9562			
	156	45-11-0110 Load Sheave	(1)
	159	43-76-0470 Sheave Housing	(1)
	161	43-76-0480 Gear Housing	(1)
	163	43-56-0440 Chain Guide	(2)
	165	44-66-5655 Chain Guide Plate	(2)
	179	43-40-0230 Load Chain Block Cover	(1)
	180	43-40-0240 Load Chain Block	(1)
	181	45-04-0790 Load Chain Block Screw	(1)
	182	14-36-0180 Bottom Hook with Latch Assy.	(1)
	183	14-47-0610 Latch Kit	(1)
	202	14-47-0630 Bottom Block Assy.	(1)
For Catalog No. 9565, 9566, 9567 & 9568			
	156	45-11-0120 Load Sheave	(1)
	159	43-76-0510 Sheave Housing	(1)
	161	43-76-0490 Gear Housing	(1)
	163	43-56-0450 Chain Guide	(2)
	165	44-66-5656 Chain Guide Plate	(2)
	195	14-36-0190 Hook & Latch Assy.	(1)
	196	14-47-0650 Latch Kit	(1)
	197	43-76-0520 Frame	(2)
	198	44-60-1060 Dead End Pin	(1)
	199	06-75-3200 1/4 - 20 x 1-1/4 Socket Head Screw	(2)
	200	06-97-2600 Lock Washer	(2)
	201	42-28-0290 Bottom Block Assy.	(1)

FIG.	PART NO.	DESCRIPTION OF PART	NO. REQ.
For Catalog No. 9570, 9571, 9572 & 9573			
	156	45-11-0120 Load Sheave	(1)
	159	43-76-0510 Sheave Housing	(1)
	161	43-76-0490 Gear Housing	(1)
	163	43-56-0450 Chain Guide	(2)
	165	44-66-5656 Chain Guide Plate	(2)
	183	14-47-0610 Latch Kit	(1)
	184	14-47-0620 Load Block Kit	(1)
	185	45-04-0800 Load Block Screw 3/8 - 24 x 1-3/4	(2)
	186	06-97-4127 Lock Washer	(2)
	187	43-40-0250 Load Block Frame	(2)
	188	14-36-0170 Bottom Hook w/Latch Assy.	(1)
	189	06-55-2475 Nut 3/8 - 24 Hex	(2)
	190	14-73-0220 Sheave Shaft Assy.	(1)
	191	14-76-0020 Sheave Shaft & Bearing Assy.	(1)
	192	36-74-0020 Sheave Shaft	(1)
	193	06-65-3635 Roll Pin 3/16 x 1-1/4	(2)



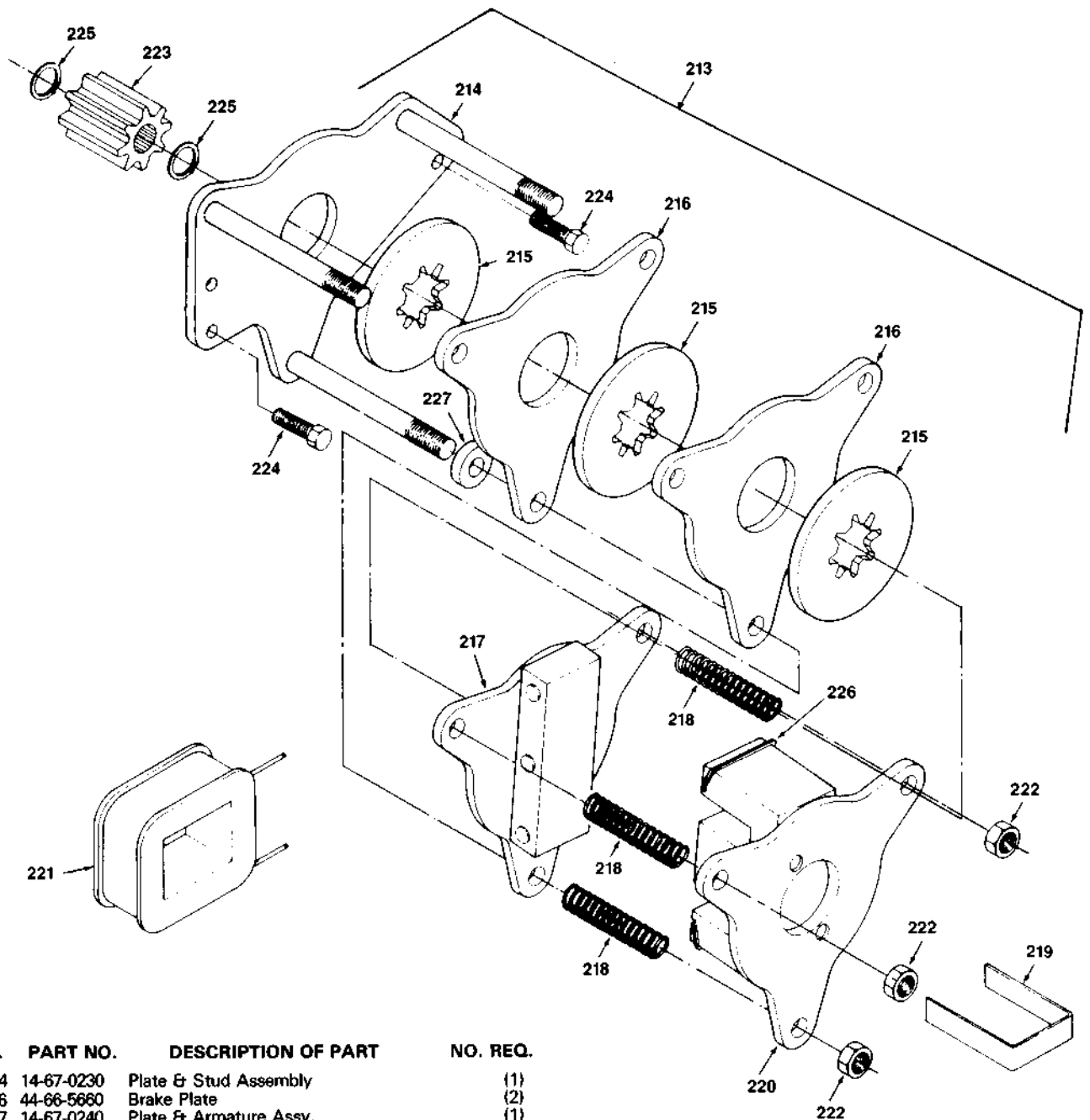


FIG.	PART NO.	DESCRIPTION OF PART	NO. REQ.
214	14-67-0230	Plate & Stud Assembly	(1)
216	44-66-5660	Brake Plate	(2)
217	14-67-0240	Plate & Armature Assy.	(1)
218	40-50-8110	Spring	(3)
219	44-86-0500	Retainer	(1)
220	14-67-0250	Plate & Frame Assembly	(1)
222	06-57-5165	3/8 - 16 Lock Nut	(3)
223	42-04-3570	Adapter	(1)
224	06-95-6000	1/2 - 20 x 5/8 Hex Hd. Thread Forming	(2)
225	34-60-1400	Retaining Ring	(2)
226	22-51-0230	Shading Coil	(2)

For Catalog No. 9560, 9561 & 9562

213	14-04-0030	Disc Brake Assembly	(1)
215	43-06-0580	Brake & Disc	(2)
221	22-51-0210	Coil 115 Volt/PH 60 HZ	(1)
227	45-36-1360	Spacer	(3)

FIG.	PART NO.	DESCRIPTION OF PART	NO. REQ.
------	----------	---------------------	----------

For Catalog No. 9565, 9567, 9568, 9570, 9572 & 9573

213	14-04-0040	Disc Brake Assembly	(1)
215	43-06-0580	Brake & Disc	(3)
221	22-51-0210	Coil 115 Volt/1 PH 60 HZ	(1)

For Catalog No. 9566 & 9571

213	14-04-0050	Disc Brake Assembly	(1)
215	43-06-0580	Brake & Disc	(3)
221	22-51-0220	Coil 230/460 Volt 3 Phase 60 HZ	(1)

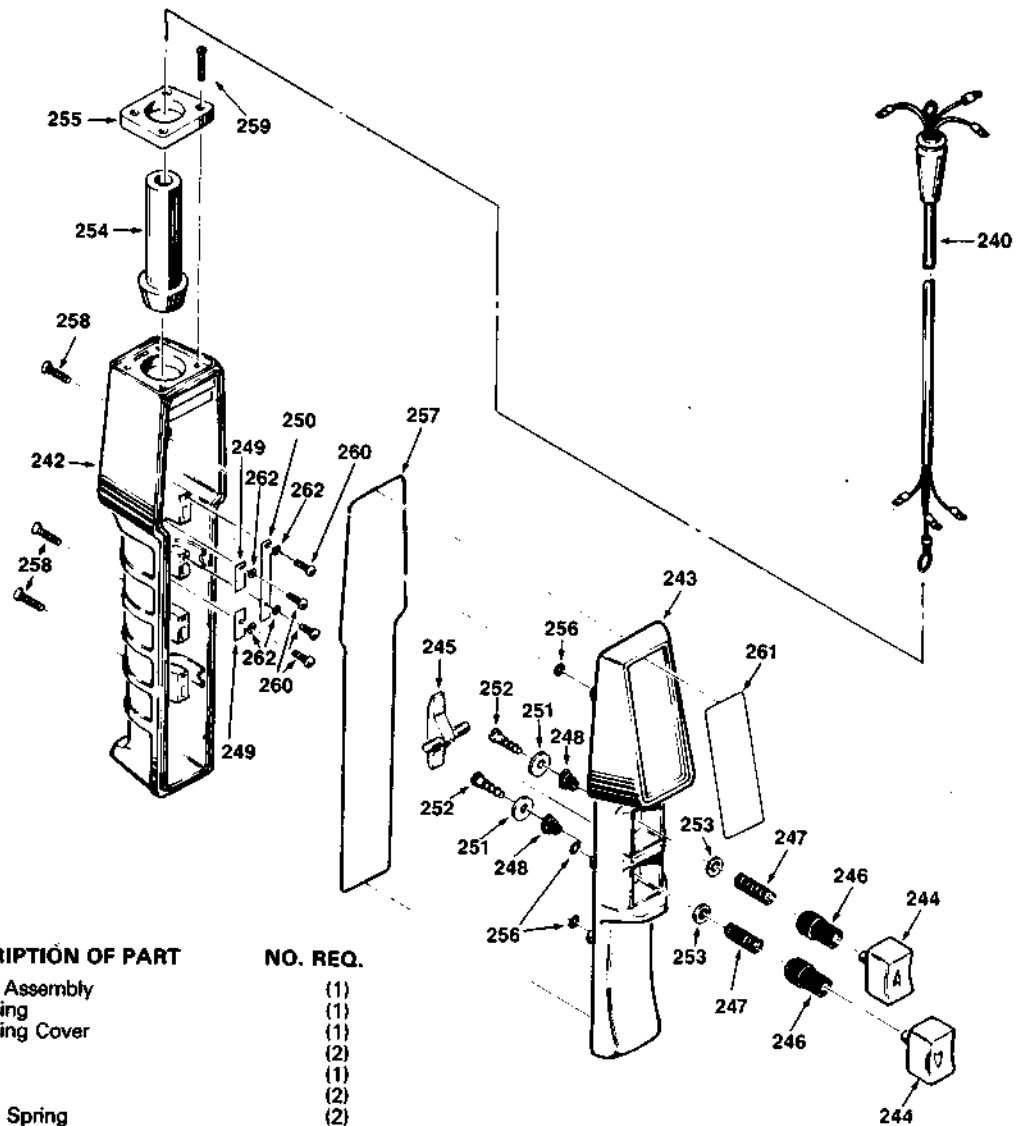
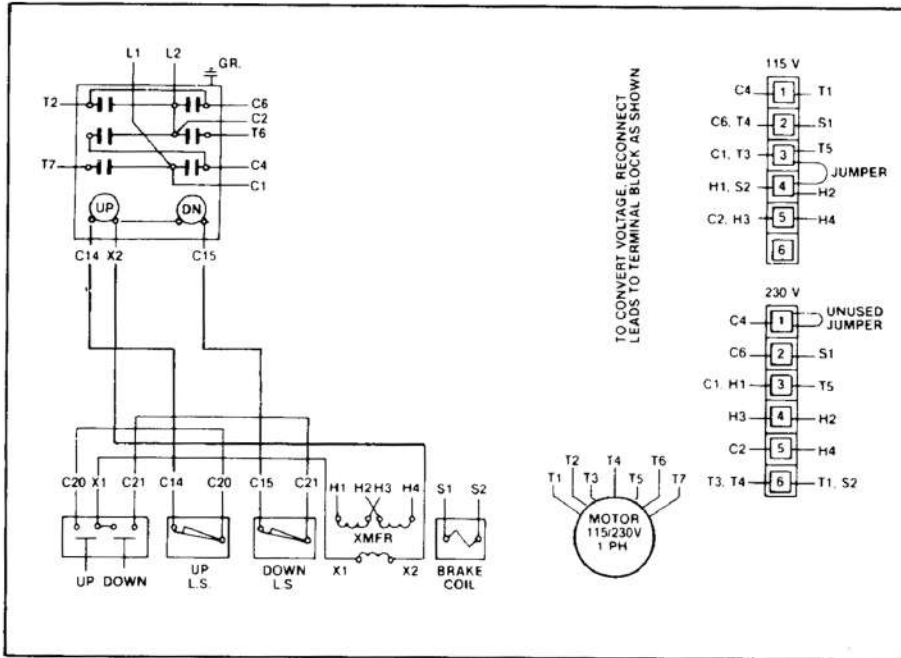


FIG.	PART NO.	DESCRIPTION OF PART	NO. REQ.
241	23-37-0140	Push Button Assembly	(1)
242	43-76-0500	Switch Housing	(1)
243	42-92-0720	Switch Housing Cover	(1)
244	42-42-0300	Push Button	(2)
245	44-20-0250	Interlock	(1)
246	45-06-0430	Dust Shield	(2)
247	40-50-8140	Compression Spring	(2)
248	40-50-8150	Conical Spring	(2)
249	44-66-5710	Switch Contact	(2)
250	44-66-5720	Switch Contact Common	(1)
251	45-88-8100	Contact Washer	(2)
252	06-95-0045	Contact Screw	(2)
253	45-06-0440	Seal	(2)
254	22-90-0190	Grommet	(1)
255	22-32-0360	Cap	(1)
256	34-40-4150	O-Ring	(3)
257	45-06-0450	Seal	(1)
258	06-95-5335	#10 - 3/4 Flat Hd. Self Tapping Screw	(3)
259	06-95-0132	#6 x 5/8 Flat Hd. Self Tapping Screw	(4)
260	06-95-0043	#4 x 3/8 Round Hd. Self Tapping Screw	(4)
261	10-37-0090	Warning Label	(1)
262	06-97-0450	#4 External Tooth Lock Washer	(4)

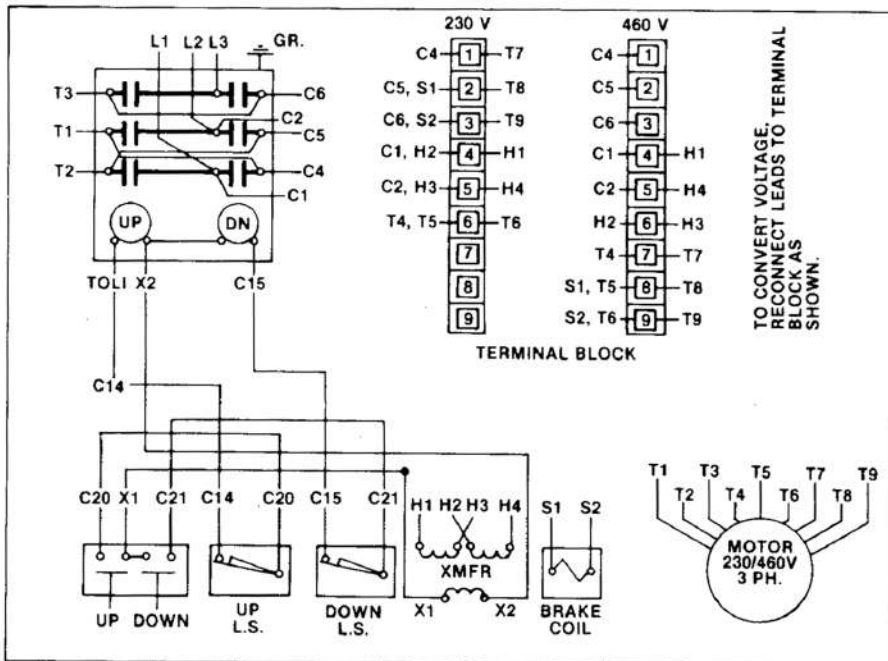
FIG.	PART NO.	DESCRIPTION OF PART	NO. REQ.
<u>For Catalog No. 9567</u>			
178	42-60-0370	Lift Chain 1 Ton 15'	(1)
239	14-05-0030	Pushbutton & Cable Assy. 15'	(1)
240	22-64-2860	Cable Assy. 15'	(1)
<u>For Catalog No. 9568</u>			
178	42-60-0375	Lift Chain 1 Ton 20'	(1)
239	14-05-0040	Pushbutton & Cable Assy. 20'	(1)
240	22-64-2870	Cable Assy. 20'	(1)
<u>For Catalog No. 9570 &amp; 9571</u>			
178	42-60-0380	Lift Chain 2 Ton 10'	(1)
239	14-05-0020	Pushbutton & Cable Assy. 10'	(1)
240	22-64-2850	Cable Assy. 10'	(1)
<u>For Catalog No. 9572</u>			
178	42-60-0385	Lift Chain 2 Ton 15'	(1)
239	14-05-0030	Pushbutton & Cable Assy. 15'	(1)
240	22-05-0060	Cable Assy. 15'	(1)
<u>For Catalog No. 9573</u>			
178	42-60-0390	Lift Chain 2 Ton 20'	(1)
239	14-05-0040	Pushbutton & Cable Assy. 20'	(1)
240	22-64-2870	Cable Assy. 20'	(1)

<u>For Catalog No. 9560</u>			
178	42-60-0350	Lift Chain 1/2 Ton 10'	(1)
239	14-05-0020	Pushbutton & Cable Assy. 10'	(1)
240	22-64-2850	Cable Assy. 10'	(1)
<u>For Catalog No. 9561</u>			
178	42-60-0355	Lift Chain 1/2 Ton 15'	(1)
239	14-05-0030	Pushbutton & Cable Assy. 15'	(1)
240	22-64-2860	Cable Assy. 15'	(1)
<u>For Catalog No. 9562</u>			
178	42-60-0360	Lift Chain 1/2 Ton 20'	(1)
239	14-05-0040	Pushbutton & Cable Assy. 20'	(1)
240	22-64-2870	Cable Assy. 20'	(1)
<u>For Catalog No. 9565 &amp; 9566</u>			
178	42-60-0365	Lift Chain 1 Ton 10'	(1)
239	14-05-0020	Pushbutton & Cable Assy. 10'	(1)
240	22-64-2850	Cable Assy. 10'	(1)

# WIRING



## SINGLE PHASE



## THREE PHASE