



SERVICE PARTS LIST

BULLETIN NO.
54-26-1700

SPECIFY CATALOG NO. AND SERIAL NO. WHEN ORDERING PARTS		REVISED BULLETIN	DATE
1/2" D.I. IMPACT WRENCH			July 2002
CATALOG NO.	9070-20	STARTING SERIAL NO.	229A
		WIRING INSTRUCTION 58-01-1820	

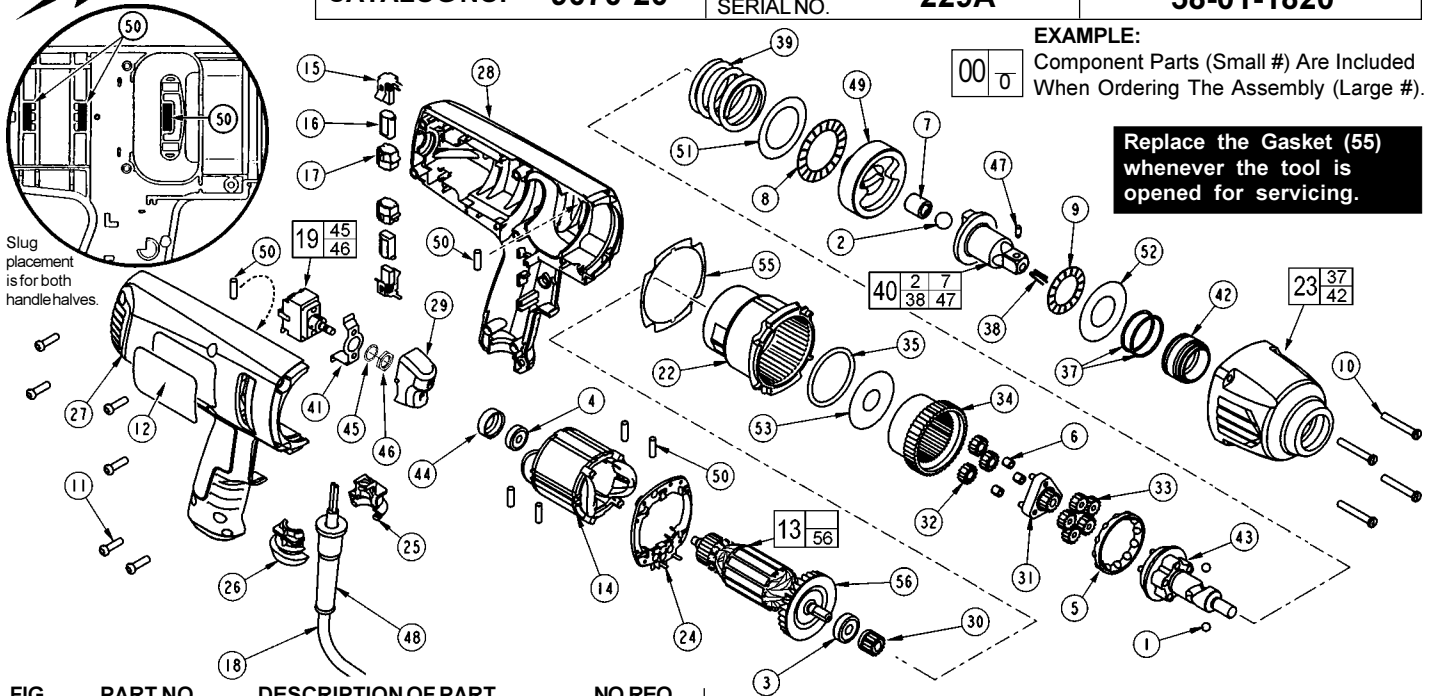


FIG.	PART NO.	DESCRIPTION OF PART	NO.REQ.
1	02-02-0250	1/4" Ball	(2)
2	-----	1/2" Ball	(1)
3	02-04-0852	Ball Bearing	(1)
4	02-04-0645	Ball Bearing	(1)
5	02-40-0050	Angular Contact Bearing	(1)
6	02-50-3250	Unit Cage Bearing	(3)
7	-----	Drawn Cup Bearing	(1)
8	02-80-0200	Thrust Bearing	(1)
9	02-80-3256	Thrust Bearing	(1)
10	05-88-5988	K50 x 35mm Screw	(4)
11	06-95-6290	M5 x 2.24 x 18 Plastite Screw	(6)
12	12-20-9070	Service Nameplate	(1)
13	16-10-0275	Armature	(1)
14	18-07-2275	Field	(1)
15	22-18-0040	Brush Assembly	(2)
16	22-20-0110	Brush Tube	(2)
17	22-20-0465	Brush Tube Holder	(2)
18	22-64-0970	Cord	(1)
19	23-66-1305	Switch	(1)
22	28-14-0175	Gearcase	(1)
23	14-38-0100	Front Housing Assembly	(1)
24	31-15-2045	Field Connector	(1)
25	31-17-0260	Cord Clamp	(1)
26	31-17-0270	Cord Clamp	(1)
27	31-44-2176	Right Handle	(1)
28	31-44-2181	Left Handle	(1)
29	31-92-0060	Rocker Trigger	(1)
30	32-60-0150	Sun Gear	(1)
31	32-60-0175	Sun Gear	(1)
32	32-62-0200	Planet Gear	(3)
33	32-62-0215	Planet Gear	(5)
34	32-65-0005	Ring Gear	(1)
35	34-40-0070	O-Ring	(1)
37	-----	O-Ring	(2)
38	40-50-8320	Detent Spring	(1)
39	40-50-0241	Spring	(1)
40	14-73-0145	Anvil Assembly	(1)
41	42-36-0275	Switch Bracket	(1)
42	-----	Bushing	(1)
43	14-73-0300	Cam Shaft Assembly	(1)
44	42-96-0015	Bearing Cup	(1)
45	-----	Supplied with Switch	(1)
46	-----	Supplied with Switch	(1)

EXAMPLE:
Component Parts (Small #) Are Included
When Ordering The Assembly (Large #).

**Replace the Gasket (55)
whenever the tool is
opened for servicing.**

RECALL NOTICE!
See back page for important safety information.

FIG.	PART NO.	DESCRIPTION OF PART	NO.REQ.
47	44-60-1170	Detent Pin	(1)
48	44-76-0210	Cord Protector	(1)
49	44-82-0205	Ram	(1)
50	45-30-0025	Rubber Slug	(6)
51	45-88-0535	Washer	(1)
52	45-88-1575	Washer	(1)
53	45-88-3260	Washer	(1)
55	43-44-0991	Gasket	(1)
56	22-84-0375	Fan	(1)

FIG. NOTES:
4 Orient bearing seal (black side) toward the commutator.
10 Torque to 45-50 in./lbs.
11 Torque to 25-30 in./lbs.
16 At the time of brush replacement, the tool should be relubricated with Type "Z" Grease, No.49-08-7655.

FIG. LUBRICATION (Type "Z" Grease, No.49-08-7655):
23,34,42, 43,49 Lightly coat with grease the Ring Gear (34) and the bearing races of the Camshaft Planet Carrier (43), the back bearing surface of the Ram (49) and the I.D. the Front Housing Bushing (42).
7,40 Place a dab of grease in the Needle Bearing (7) inside the Anvil (40).
31,32,33,43 Fill with grease the center of the five Planet Gears (33) on the Camshaft Assembly (43). Fill the center of the three Planet Gears (32) on the Sun Gear (31).
49 Place approximately 1/2 oz. of grease in the front cavity of the Ram.
43 Place approximately 1/2 oz. grease on the Camshaft (43) inside the Spring (39).

RECALL NOTICE!

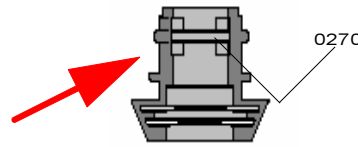
Milwaukee is providing a **no-charge** warranty service to owners of **9070-20, 9071-20, and 9075-20 Impact Wrenches**. We are taking this action because under certain circumstances the cord set of the Impact Wrench may pull out of the handle, which poses a risk of injury or electrocution.

All **9070-20, 9071-20, and 9075-20 Impact Wrenches** sold by March, 2001 and July 2001 within the serial number ranges shown are affected.

Nameplate Catalog Number	Serial Number Range
9070-20	2 2 9 A 4 0 1 0 1 0 0 0 1 t h r u 2 2 9 A 4 0 1 2 5 0 7 2 2
9071-20	2 3 0 A 4 0 1 0 1 0 0 0 1 t h r u 2 3 0 A 4 0 1 2 6 0 1 0 4
9075-20	2 3 9 A 4 0 1 0 1 0 0 0 1 t h r u 2 3 9 A 4 0 1 2 5 0 4 0 4

For operator safety a **9070-20, 9071-20 or 9075-20 Impact Wrench** within the listed serial number ranges **require original equipment 31-17-0265 Cord Clamp to be replaced with a 31-17-0270 Cord Clamp.**

As an aid to determining the cord clamp in a tool, the 31-17-0270 Cord Clamp has the numbers **'0270'** molded into the clamping rib. The 31-17-0265 Cord Clamp has no markings on the rib.



If the tool contains a 31-17-0265 Cord Clamp, please return your Impact Wrench to the nearest Milwaukee **factory** Service Center or Authorized Service station for no-charge warranty replacement of the cord clamp.

If nameplate has a **'X'** stamped into the tool's nameplate, next to the catalog number, the tool has been repaired and the defective cord clamp has already been replaced.

If you need assistance in locating the service facility nearest you or have questions please call 1.800.729.3878.



SERVICE PARTS LIST

BULLETIN NO.
54-26-1701

SPECIFY CATALOG NO. AND SERIAL NO. WHEN ORDERING PARTS		REVISED BULLETIN 54-26-1700	DATE Mar. 2008
1/2" D.I. IMPACT WRENCH			
CATALOG NO.	9070-20	STARTING SERIAL NO.	229B
		WIRING INSTRUCTION 58-01-1820	

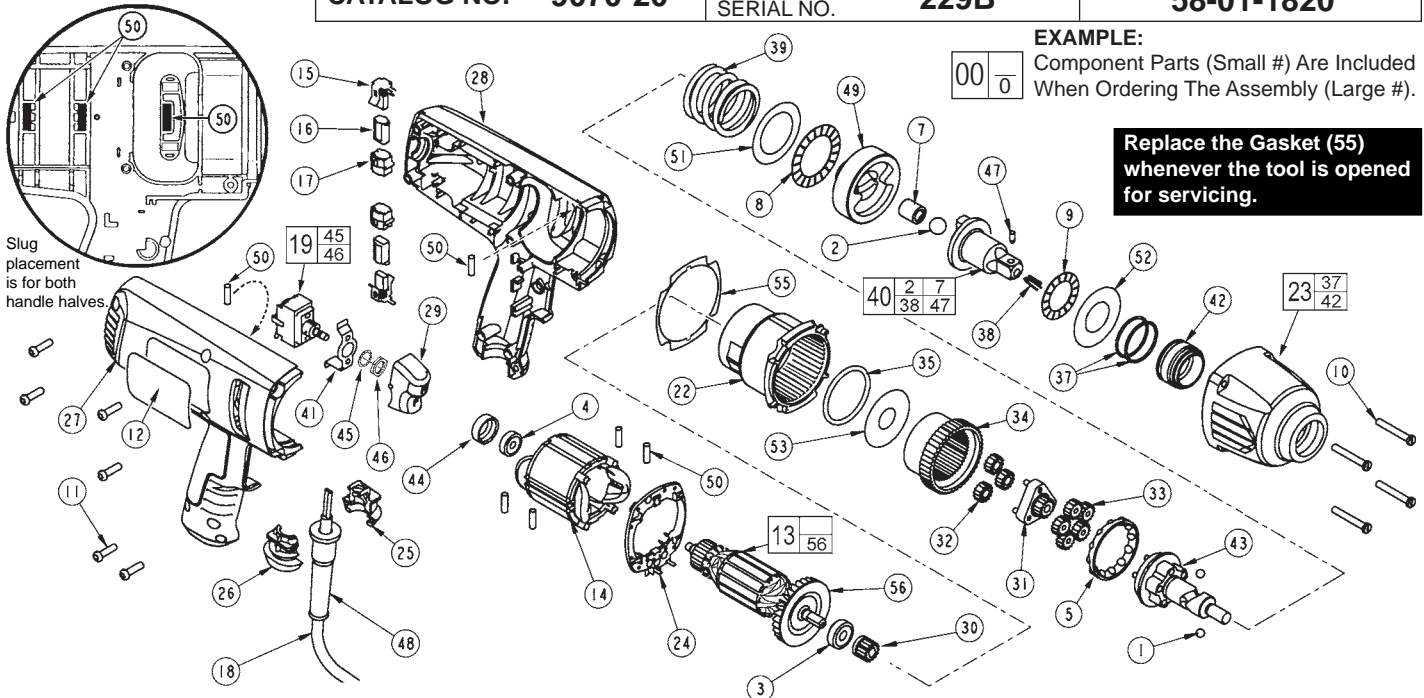


FIG.	PART NO.	DESCRIPTION OF PART	NO.REQ.
1	02-02-0250	1/4" Ball	(2)
2	-----	1/2" Ball	(1)
3	02-04-0852	Ball Bearing	(1)
4	02-04-0645	Ball Bearing	(1)
5	02-40-0050	Angular Contact Bearing	(1)
7	-----	Drawn Cup Bearing	(1)
8	02-80-0200	Thrust Bearing	(1)
9	02-80-3256	Thrust Bearing	(1)
10	05-88-5988	K50 x 35mm Screw	(4)
11	06-95-6290	M5 x 2.24 x 18 Plastite Screw	(6)
12	12-20-9070	Service Nameplate	(1)
★ 13	16-10-2275	Armature	(1)
14	18-07-2275	Field	(1)
15	22-18-0040	Brush Assembly	(2)
16	22-20-0110	Brush Tube	(2)
17	22-20-0465	Brush Tube Holder	(2)
18	22-64-0970	Cord	(1)
19	23-66-1305	Switch	(1)
22	28-14-0175	Gearcase	(1)
23	14-38-0100	Front Housing Assembly	(1)
24	31-15-2045	Field Connector	(1)
★ 25	31-17-0261	Cord Clamp	(1)
★ 26	31-17-0271	Cord Clamp	(1)
27	31-44-2176	Right Handle	(1)
28	31-44-2181	Left Handle	(1)
29	31-92-0060	Rocker Trigger	(1)
30	32-60-0150	Sun Gear	(1)
31	32-60-0175	Sun Gear	(1)
★ 32	32-62-0215	Planet Gear	(3)
33	32-62-0215	Planet Gear	(5)
34	32-65-0005	Ring Gear	(1)
35	34-40-0070	O-Ring	(1)
37	-----	O-Ring	(2)
38	40-50-8320	Detent Spring	(1)
39	40-50-0241	Spring	(1)
40	14-73-0145	Anvil Assembly	(1)
41	42-36-0275	Switch Bracket	(1)
42	-----	Bushing	(1)
43	14-73-0300	Cam Shaft Assembly	(1)
44	42-96-0015	Bearing Cup	(1)
45	-----	Supplied with Switch	(1)
46	-----	Supplied with Switch	(1)

FIG.	PART NO.	DESCRIPTION OF PART	NO.REQ.
47	44-60-1170	Detent Pin	(1)
48	44-76-0210	Cord Protector	(1)
49	44-82-0205	Ram	(1)
50	45-30-0025	Rubber Slug	(6)
51	45-88-0535	Washer	(1)
52	45-88-1575	Washer	(1)
★ 53	45-88-3250	Washer	(1)
55	43-44-0991	Gasket	(1)
56	22-84-0375	Fan	(1)

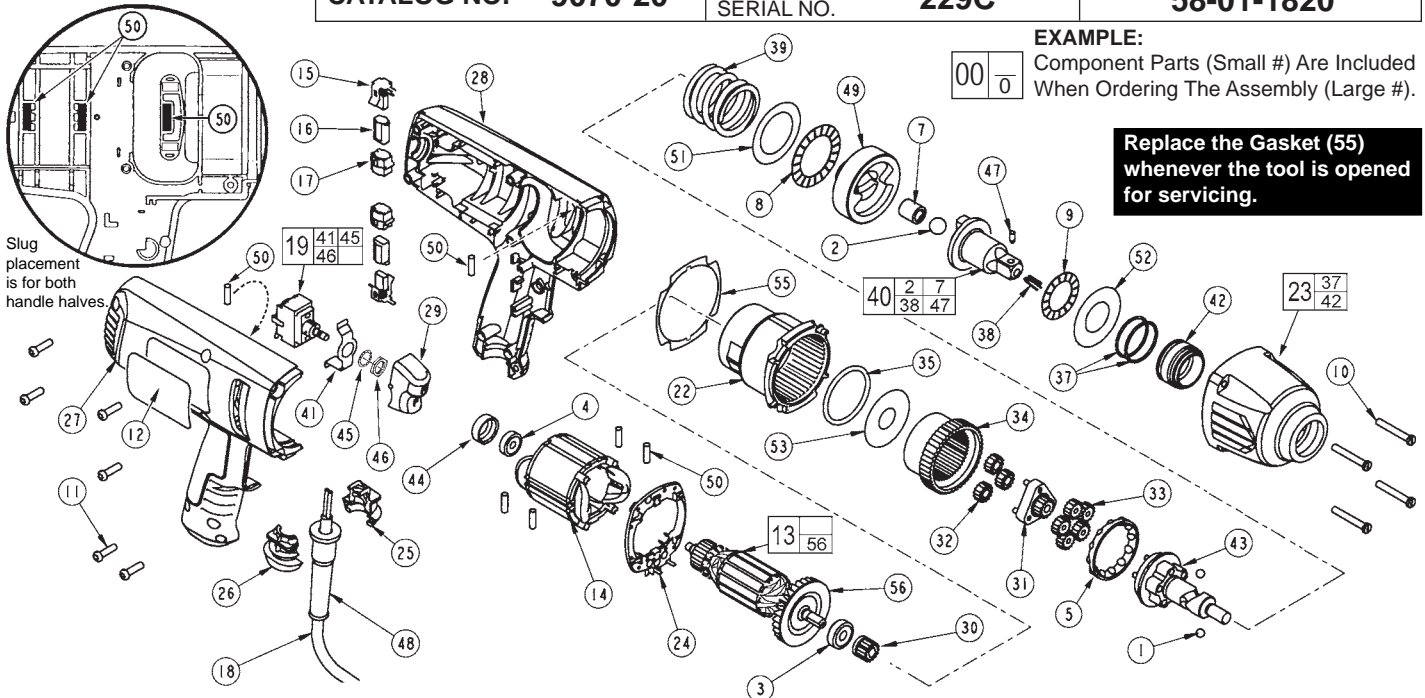
- FIG. 4** NOTES:
Orient bearing seal (black side) toward the commutator.
- 10** Torque to 45-50 in./lbs.
- 11** Torque to 25-30 in./lbs.
- 16** At the time of brush replacement, the tool should be relubricated with Type "Z" Grease, No.49-08-7655.
- FIG. 23,34,42, 43,49** **LUBRICATION (Type "Z" Grease, No.49-08-7655):**
Lightly coat with grease the Ring Gear (34) and the bearing races of the Camshaft Planet Carrier (43), the back bearing surface of the Ram (49) and the I.D. the Front Housing Bushing (42).
- 7,40** Place a dab of grease in the Needle Bearing (7) inside the Anvil (40).
- 31,32,33,43** Fill with grease the center of the five Planet Gears (33) on the Camshaft Assembly (43). Fill the center of the three Planet Gears (32) on the Sun Gear (31).
- 49** Place approximately 1/2 oz. of grease in the front cavity of the Ram.
- 43** Place approximately 1/2 oz. grease on the Camshaft (43) inside the Spring (39).



SERVICE PARTS LIST

BULLETIN NO.
54-26-1702

SPECIFY CATALOG NO. AND SERIAL NO. WHEN ORDERING PARTS		REVISED BULLETIN 54-26-1701	DATE Mar. 2011
1/2" D.I. IMPACT WRENCH			
CATALOG NO.	9070-20	STARTING SERIAL NO.	229C
		WIRING INSTRUCTION 58-01-1820	



EXAMPLE:
Component Parts (Small #) Are Included
When Ordering The Assembly (Large #).

00 / 0

**Replace the Gasket (55)
whenever the tool is opened
for servicing.**

FIG.	PART NO.	DESCRIPTION OF PART	NO.REQ.
1	02-02-0250	1/4" Ball	(2)
2	-----	1/2" Ball	(1)
3	02-04-0852	Ball Bearing	(1)
4	02-04-0645	Ball Bearing	(1)
5	02-40-0050	Angular Contact Bearing	(1)
7	-----	Drawn Cup Bearing	(1)
8	02-80-0200	Thrust Bearing	(1)
9	02-80-3256	Thrust Bearing	(1)
10	05-88-5988	K50 x 35mm Screw	(4)
11	06-95-6290	M5 x 2.24 x 18 Plastite Screw	(6)
12	12-20-9070	Service Nameplate	(1)
13	16-10-2275	Armature	(1)
14	18-07-2275	Field	(1)
15	22-18-0040	Brush Assembly	(2)
16	22-20-0110	Brush Tube	(2)
17	22-20-0465	Brush Tube Holder	(2)
18	22-64-0970	Cord	(1)
★ 19	23-66-1306	Switch	(1)
22	28-14-0175	Gearcase	(1)
23	14-38-0100	Front Housing Assembly	(1)
24	31-15-2045	Field Connector	(1)
25	31-17-0261	Cord Clamp	(1)
26	31-17-0271	Cord Clamp	(1)
27	31-44-2176	Right Handle	(1)
28	31-44-2181	Left Handle	(1)
29	31-92-0060	Rocker Trigger	(1)
30	32-60-0150	Sun Gear	(1)
31	32-60-0175	Sun Gear	(1)
32	32-62-0215	Planet Gear	(3)
33	32-62-0215	Planet Gear	(5)
34	32-65-0005	Ring Gear	(1)
35	34-40-0070	O-Ring	(1)
37	-----	O-Ring	(2)
38	40-50-8320	Detent Spring	(1)
39	40-50-0241	Spring	(1)
40	14-73-0145	Anvil Assembly	(1)
★ 41	-----	Switch Bracket	(1)
42	-----	Bushing	(1)
43	14-73-0300	Cam Shaft Assembly	(1)
44	42-96-0015	Bearing Cup	(1)
45	-----	Supplied with Switch	(1)
46	-----	Supplied with Switch	(1)

FIG.	PART NO.	DESCRIPTION OF PART	NO.REQ.
47	44-60-1170	Detent Pin	(1)
48	44-76-0210	Cord Protector	(1)
49	44-82-0205	Ram	(1)
50	45-30-0025	Rubber Slug	(6)
51	45-88-0535	Washer	(1)
52	45-88-1575	Washer	(1)
53	45-88-3250	Washer	(1)
55	43-44-0991	Gasket	(1)
56	22-84-0375	Fan	(1)

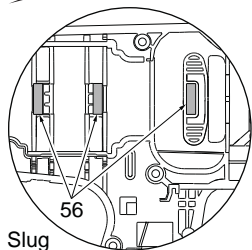
- FIG. NOTES:**
- 4 Orient bearing seal (black side) toward the commutator.
 - 10 Torque to 45-50 in./lbs.
 - 11 Torque to 25-30 in./lbs.
 - 16 At the time of brush replacement, the tool should be relubricated with Type "Z" Grease, No.49-08-7655.
- FIG. LUBRICATION (Type "Z" Grease, No.49-08-7655):**
- 23,34,42, 43,49 Lightly coat with grease the Ring Gear (34) and the bearing races of the Camshaft Planet Carrier (43), the back bearing surface of the Ram (49) and the I.D. the Front Housing Bushing (42).
 - 7,40 Place a dab of grease in the Needle Bearing (7) inside the Anvil (40).
 - 31,32,33,43 Fill with grease the center of the five Planet Gears (33) on the Camshaft Assembly (43). Fill the center of the three Planet Gears (32) on the Sun Gear (31).
 - 49 Place approximately 1/2 oz. of grease in the front cavity of the Ram.
 - 43 Place approximately 1/2 oz. grease on the Camshaft (43) inside the Spring (39).



SERVICE PARTS LIST

BULLETIN NO.
54-26-1703

SPECIFY CATALOG NO. AND SERIAL NO. WHEN ORDERING PARTS		REVISED BULLETIN	DATE
1/2" D.I. IMPACT WRENCH		54-26-1702	Sept. 2013
CATALOG NO. 9070-20	STARTING SERIAL NO. 229D	WIRING INSTRUCTION See Page 2	



Slug placement is for both handle halves.

Replace the Gasket (13) whenever the tool is opened for servicing.

EXAMPLE:
Component Parts (Small #) Are Included When Ordering The Assembly (Large #).

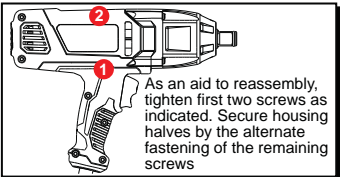
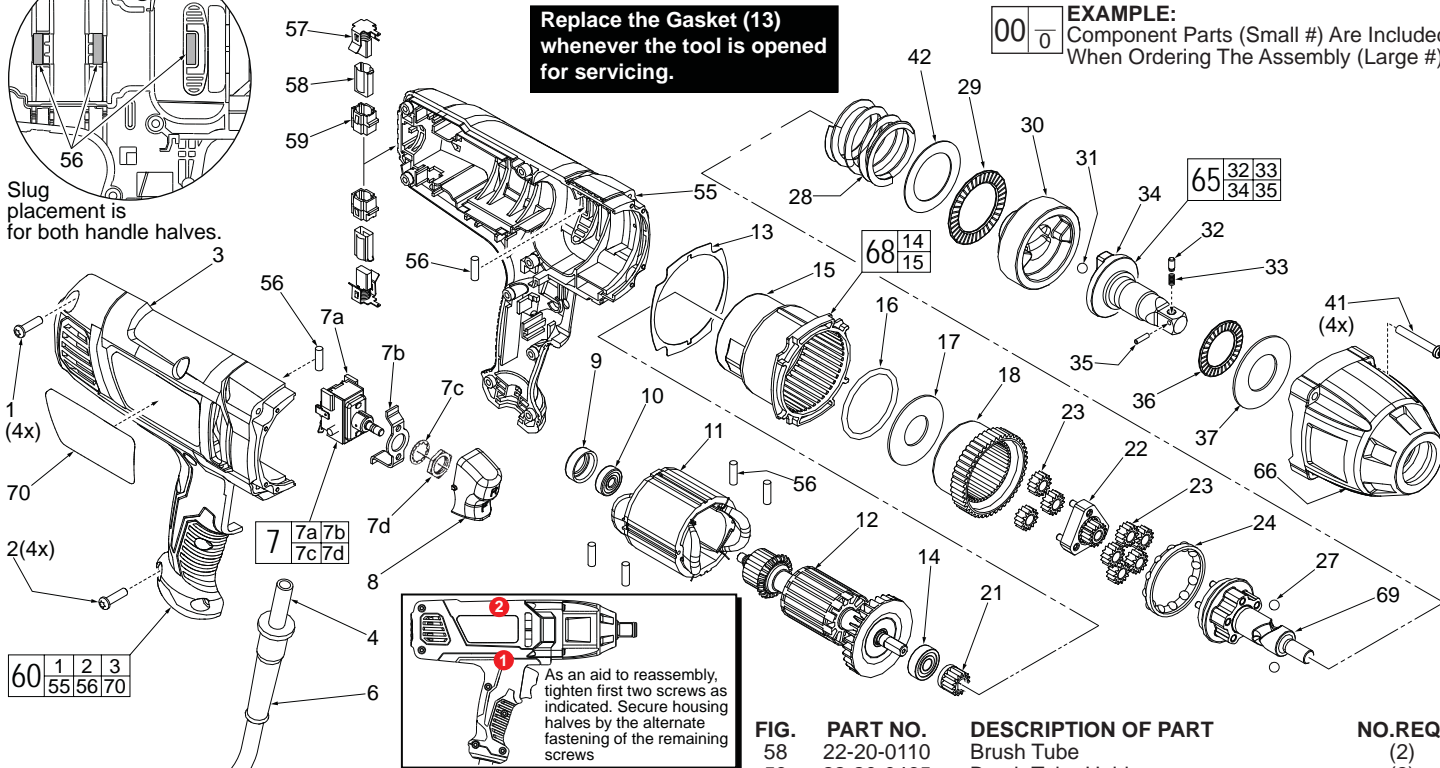


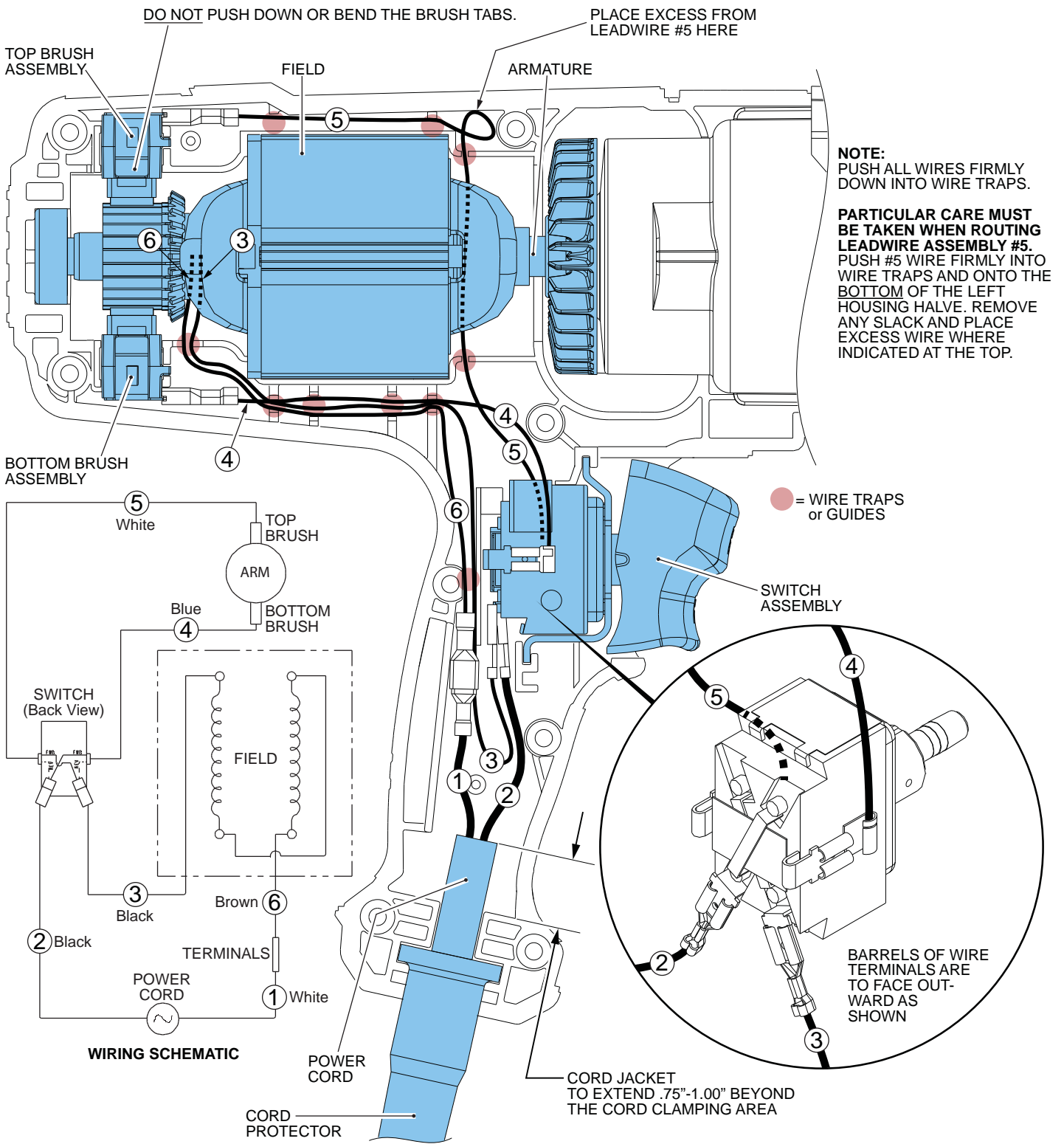
FIG.	PART NO.	DESCRIPTION OF PART	NO.REQ.
1	06-95-6290	M5 x 18mm Pan Hd. Plast. T-20 Screw	(4)
★ 2	06-95-6215	M5 x 14mm Pan Hd. Plast. T-20 Screw	(4)
★ 3	-----	Handle Cover (Right Side)	(1)
★ 4	22-64-0975	Power Cord	(1)
6	44-76-0210	Cord Protector	(1)
7	23-66-1306	Switch Assembly	(1)
7a	-----	Switch	(1)
7b	-----	Switch Bracket	(1)
7c	-----	Supplied with Switch	(1)
7d	-----	Supplied with Switch	(1)
8	31-92-0060	Rocker Trigger	(1)
9	42-96-0015	Bearing Cup	(1)
10	02-04-0645	Ball Bearing	(1)
★ 11	18-07-2280	Service Field	(1)
12	16-10-2275	Service Armature	(1)
★ 13	43-44-0992	Gasket	(1)
14	02-04-0852	Ball Bearing	(1)
15	28-14-0175	Gearcase	(1)
16	34-40-0070	O-Ring	(1)
17	45-88-3250	Washer	(1)
18	32-65-0005	Gear Ring	(1)
21	32-60-0150	Sun Gear (Pinion)	(1)
22	32-60-0175	Sun Gear (Carrier)	(1)
23	32-62-0215	Planet Gear	(8)
24	02-40-0050	Angular Contact Bearing	(1)
27	02-02-0250	1/4" Steel Ball	(2)
28	40-50-0241	Spring	(1)
29	02-80-0200	Thrust Needle Bearing	(1)
30	44-82-0205	Ram	(1)
★ 31	02-02-7010	7/32" Steel Ball	(1)
★ 32	44-60-0597	Detent Pin	(1)
★ 33	40-50-0895	Detent Spring	(1)
★ 34	-----	1/2" Square Anvil	(1)
★ 35	44-60-0465	Pivot Pin	(1)
36	02-80-3256	Thrust Bearing	(1)
37	45-88-1575	Washer	(1)
41	05-88-5988	M5 x 35mm Pan Hd. T-20 Screw	(4)
42	45-88-0535	Washer	(1)
53	23-94-9061	Wire Assembly-White (See page two)	(1)
54	23-94-9062	Wire Assembly-Blue (See page two)	(1)
★ 55	-----	Handle Support (Left Side)	(1)
★ 56	45-30-0025	Rubber Slug	(6)
57	22-18-0040	Carbon Brush Assembly	(2)

FIG.	PART NO.	DESCRIPTION OF PART	NO.REQ.
58	22-20-0110	Brush Tube	(2)
59	22-20-0465	Brush Tube Holder	(2)
★ 60	31-44-0975	Housing Assembly	(1)
★ 65	14-73-0455	Anvil Assembly	(1)
★ 66	14-38-0125	Front Housing Assembly	(1)
		Contains Bushing and two O-Rings	(1)
★ 68	28-14-0005	Gearcase Assembly	(1)
69	14-73-0300	Cam Shaft Assembly	(1)
★ 70	12-20-9090	Service Nameplate	(1)

- FIG. NOTES:**
- 10 Orient bearing seal (black side) toward the commutator.
 - 41 Torque to 37-42 in./lbs (42-48 kg/cm).
 - 1 Torque to 20-25 in./lbs (23-29 kg/cm). (Longer handle screw).
 - 2 Torque to 17-22 in./lbs (20-25 kg/cm). (Shorter handle screw).
 - 57 At the time of brush replacement, the tool should be relubricated with Type "Z" Grease, No.49-08-7655.

When servicing, remove 90-95% of the existing grease prior to installing Type "Z". Original grease may be similar in color but not compatible with "Z".

- FIG. LUBRICATION (Type "Z" Grease, No.49-08-7655):**
- 18,30, 66,69 Lightly coat with grease the Ring Gear (18) and the bearing races of the Camshaft Planet Carrier (69), the back bearing surface of the Ram (30) and the I.D. the Bushing in the Front Housing Assembly (66).
 - 34 Place a dab of grease inside the rear hole of the Anvil (34).
 - 22,23 Fill with grease the center of the five Planet Gears (23) on the Camshaft Assembly (69). Fill the center of the three Planet Gears (23) on the Sun Gear (22).
 - 30 Place approximately 1/2 oz. grease in the front cavity of the Ram.
 - 69 Place approximately 1/2 oz. grease on the Camshaft (69) inside the Spring (28).



WIRING SPECIFICATIONS

Wire No.	Wire Color	Origin or Part No.	Gauge	Length	Terminals, Connectors and End Wire Preparation
1	White	Cord Set	----	----	Connect the female terminal with the male terminal of the brown field wire #6.
2	Black	Cord Set	----	----	Attach wire terminal to switch terminal at bottom left position, barrels facing away from switch.
3	Black	Field	----	----	Attach wire terminal to switch terminal at bottom right position, barrels facing away from switch.
4	Blue	23-94-9062	----	----	Connect insulated wire terminal to the bottom brush terminal, barrel side up. Connect the un-insulated wire terminal to the terminal on the right side of switch, barrel side out.
5	White	23-94-9061	----	----	Connect insulated wire terminal to the top brush terminal, barrel side down. Connect the un-insulated wire terminal to the terminal on the left side of switch, barrel side out.
6	Brown	Field	----	----	Connect the male terminal with the female terminal of white cord wire #1.