

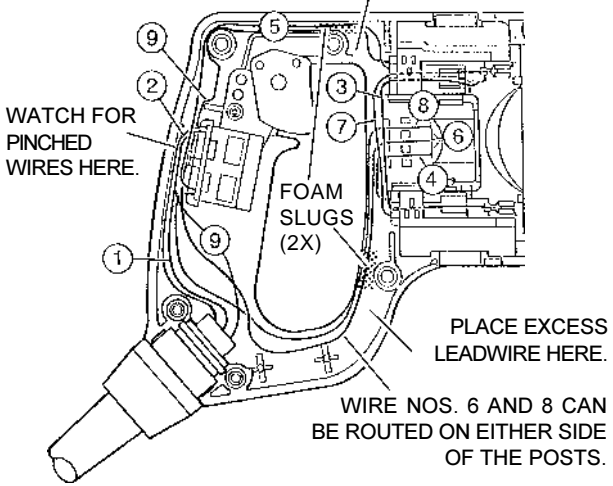
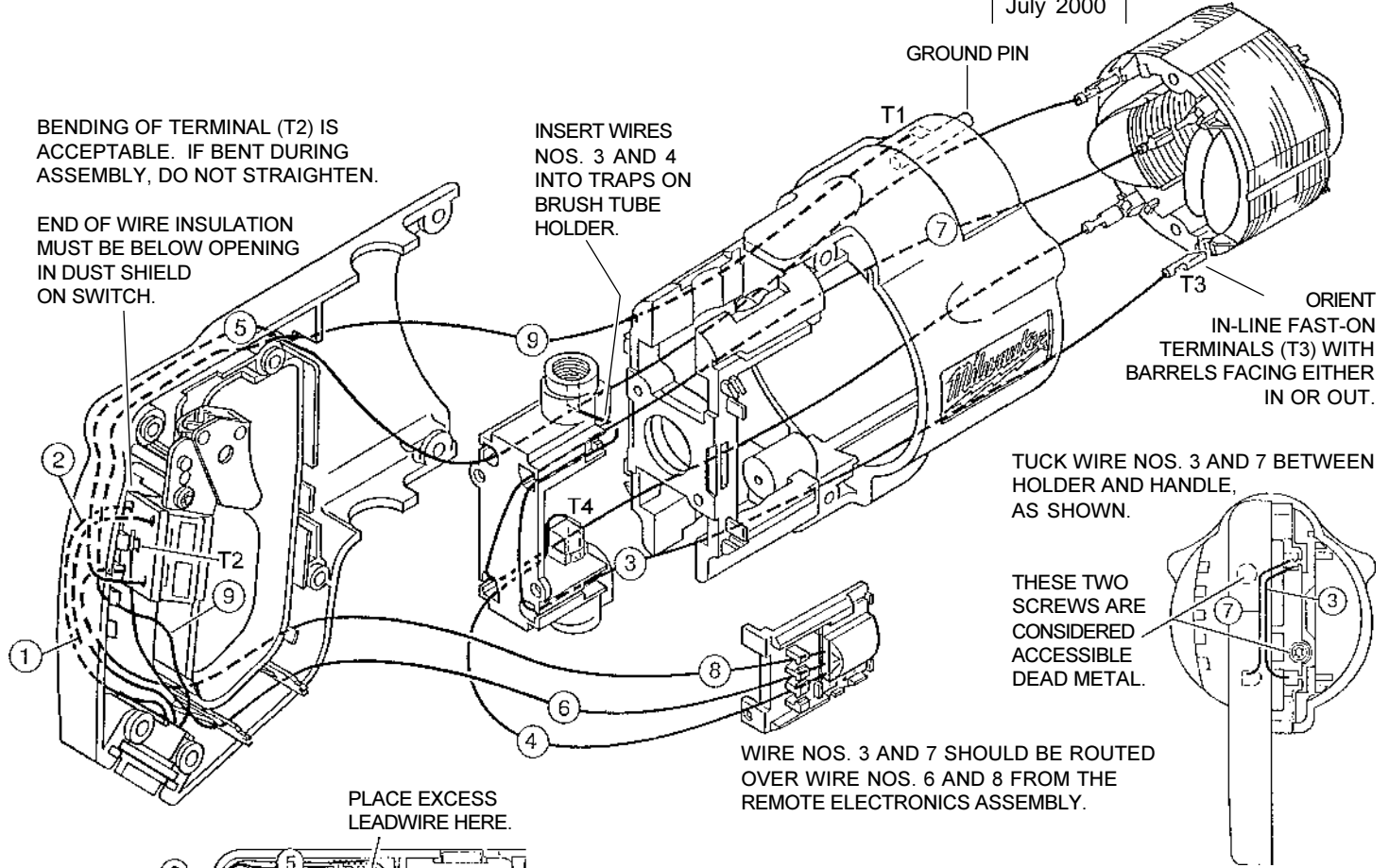
WIRING INSTRUCTIONS

TITLE

SAWZALL PLUS

**BULLETIN
58-01-0277**

DATE
July 2000



TWO WIRE QUIK-LOK MODELS:
WIRE NOS. 1 AND 2 ARE COMPONENTS OF THE BLADE HOUSING ASSEMBLY. DISREGARD SPECIFICATIONS BELOW FOR GROUND WIRE NO. 9, TERMINAL (T1) AND THE GROUND PIN.

THREE WIRE QUIK-LOK MODELS:
WIRE NOS. 1, 2 AND 9 ARE COMPONENTS OF THE PIN HOUSING ASSEMBLY. SEE SPECIFICATIONS BELOW.

WIRING SPECIFICATIONS					
Wire No.	Wire Color	Origin or Part No.	Ga.	Length	Terminals, Connectors and End Wire Preparation
1	White	Pin Hsg. Assy.	18	-----	Strip 3/8" and tin.
2	Black	Pin Hsg. Assy.	18	-----	Strip 3/8" and tin.
3	Red	23-94-6120	18	5-1/2"	Strip 3/16" for T3 / Strip 1/4" for T4.
4	Black	Remote Elect. Assy.	18	4-9/16"	Strip 1/4" for T4.
5	White	23-94-6175	18	8"	Strip 3/16" for T3 / Strip 3/8" and tin.
6	Black	Remote Elect. Assy.	18	10-3/32"	Strip 3/16" for T2.
7	Yellow	23-94-6110	18	5-5/16"	Strip both ends 3/16" for T3.
8	Black	Remote Elect. Assy.	18	9-7/16"	Strip 5/16" and tin.
9	Green	Pin Hsg. Assy.	18	-----	Strip 3/16" for T1.

BULK LEAD WIRE - BULLETIN 58-01-0003

NOTE:
All leads must be held to ± 1/8".
All lead lengths are before stripping.

TERMINAL DESCRIPTION		
Code	Part No.	Qty.
T1	23-74-0605	1
T2	23-74-0900	1
T3	23-74-1060	4
T4	23-74-0410	2

WIRING INSTRUCTIONS

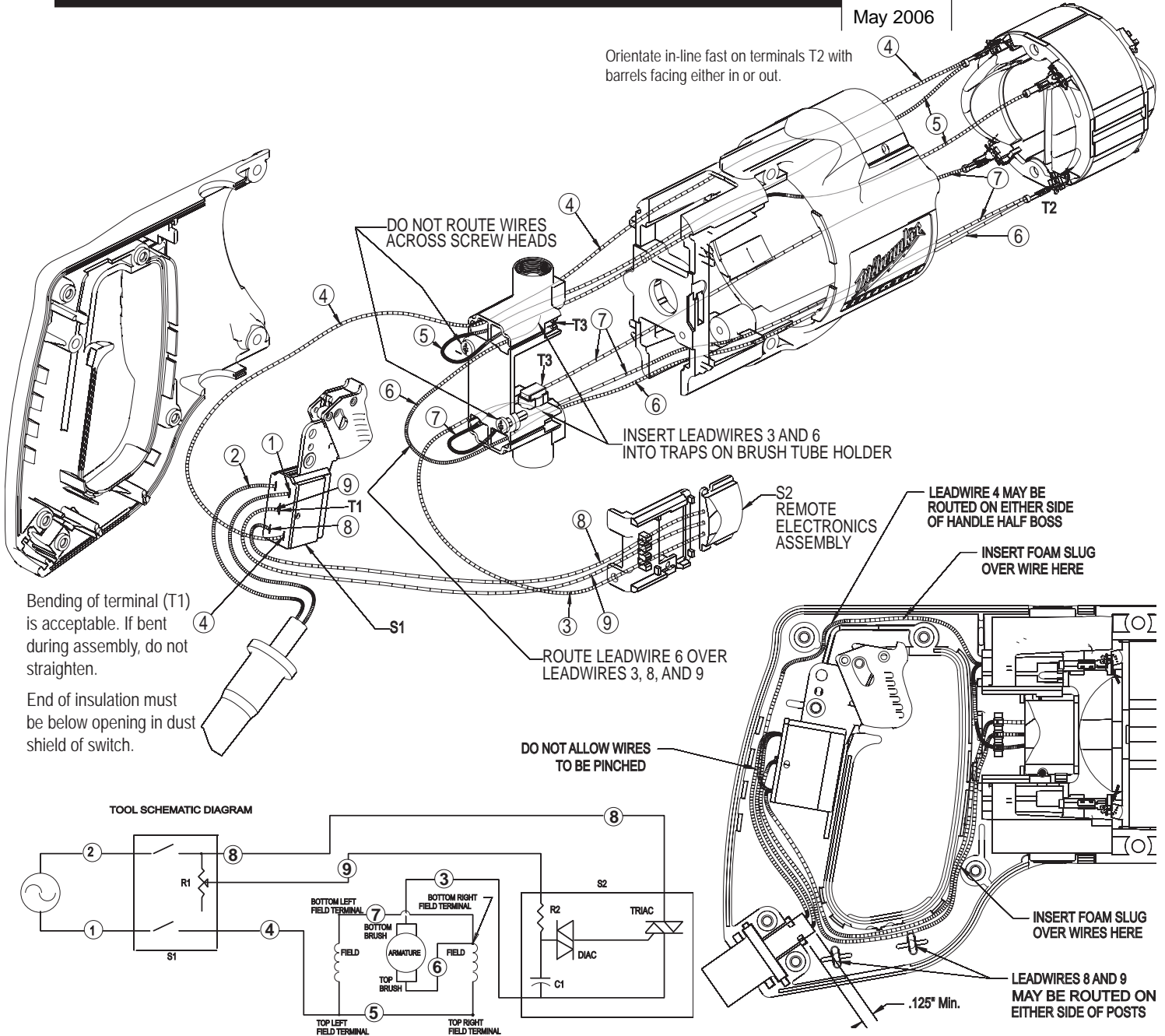
TITLE

D-HANDLE TOOLS

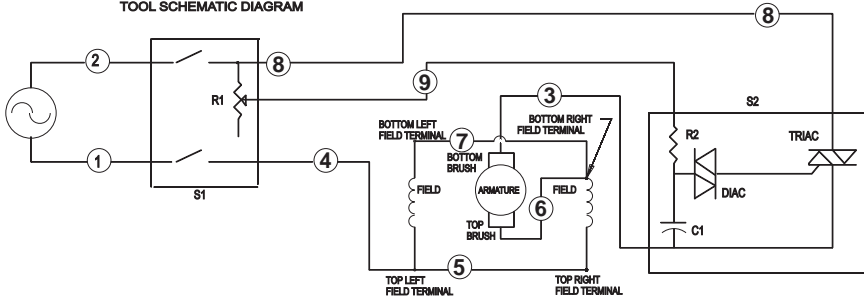
**BULLETIN
58-01-0278**

DATE
May 2006

Orientate in-line fast on terminals T2 with barrels facing either in or out.



TOOL SCHEMATIC DIAGRAM



WIRING SPECIFICATIONS

Wire No.	Wire Color	Origin or Part No.	Ga.	Length	Terminals, Connectors and End Wire Preparation
1	White	Cord	16	3.75"	Strip .35" and tin.
2	Black	Cord	16	3.75"	Strip .35" and tin.
3	Black	Remote Elec. Assy S2	18	4.59"	Strip .25" for T3.
4	White	23-94-6111	18	8"	Strip .32" and tin/strip .15" for T2.
5	White	23-94-6111	18	4.125"	Strip .15" for T2/strip .15" for T2.
6	Red	23-94-6121	18	5.6"	Strip .25" for T3/strip .15" for T2.
7	Black	23-94-6121	18	4.125"	Strip .15" for T2/strip .15" for T2.
8	Black	Remote Elec. Assy S2	18	9.44"	Strip .32" and tin.
9	Black	Remote Elec. Assy S2	18	10.1"	Strip .18" for T1.

NOTE:

All leads must be held to $\pm 1/8"$.
All lead lengths are before stripping.

TERMINAL DESCRIPTION

	Part No.	Qty.
T1	23-74-0900	1
T2	23-74-1060	4
T3	23-74-0410	2

CONNECTOR DESCRIPTION

	Description	Qty.
S1	Trigger Switch	1
S2	Remote Electronic Assembly	1

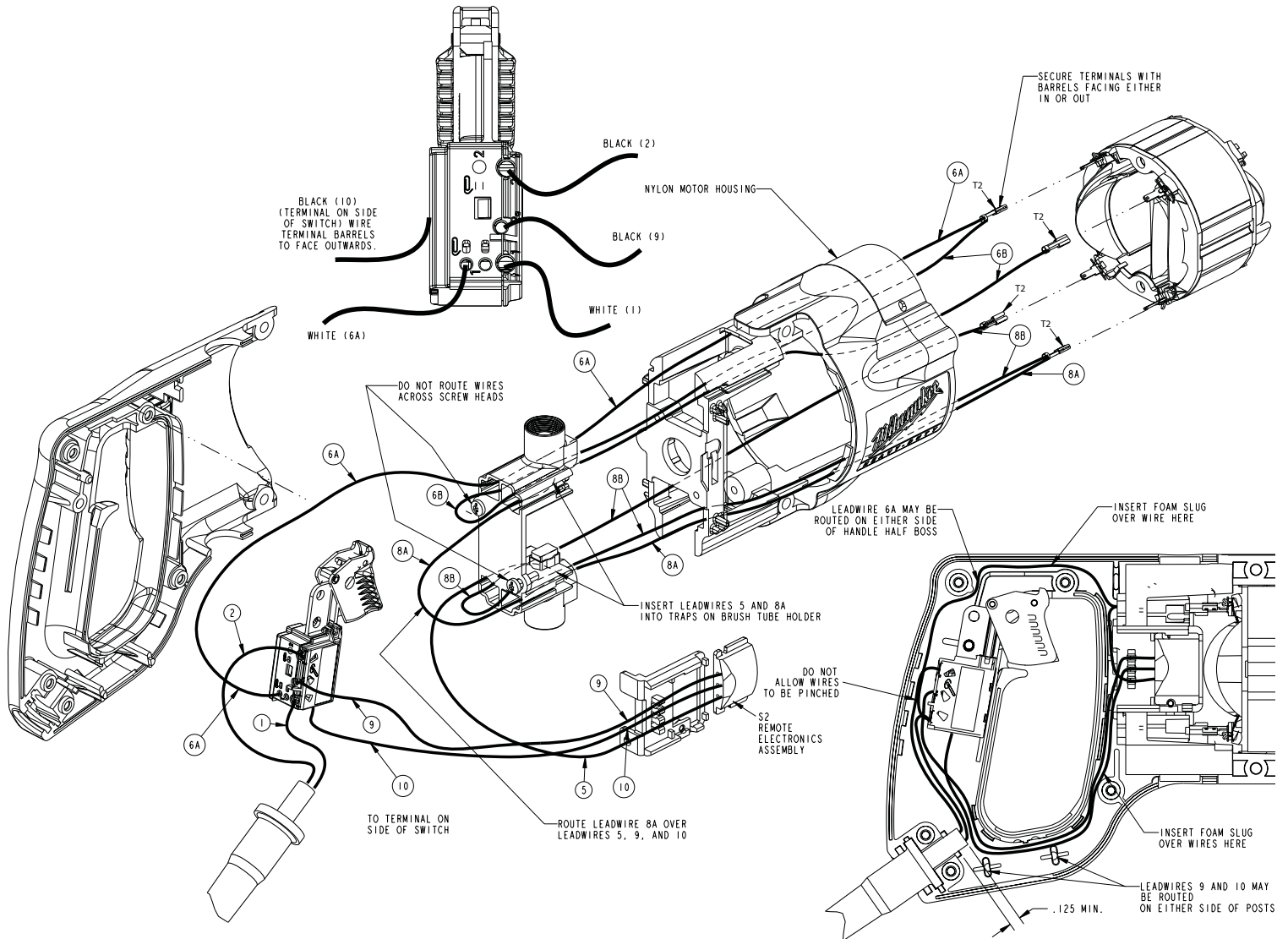
WIRING INSTRUCTIONS

TITLE

D-HANDLE TOOLS

**BULLETIN
58-01-0279**

DATE
June 2007



WIRING SPECIFICATIONS

Wire No.	Wire Color	Origin or Part No.	Ga.	Length	Terminals, Connectors and End Wire Preparation
1	White	Cord	16	3.25"	Strip .32" and tin.
2	Black	Cord	16	3.75"	Strip .32" and tin.
5	Black	14-20-3001	18	--	Clip, left hand terminal end of S2
6A	White	23-94-6111	18	--	Stripped and tinned / Receptacle
6B	White	23-94-6111	18	--	Receptacle / Receptacle
8A	Red	23-94-6121	18	--	Clip, left hand terminal / Receptacle
8B	Black	23-94-6121	18	--	Receptacle / Receptacle
9	Black	14-20-3001	18	--	Stripped and tinned end of S2
10	Black	14-20-3001	18	--	Stripped and tinned end of S2

NOTE:
All leads must be held to $\pm 1/8"$.
All lead lengths are before stripping.

TERMINAL DESCRIPTION

Code	Part No.	Qty.
T1	23-74-0900	1
T2	23-74-1060	4
T3	23-74-0410	2

CONNECTOR DESCRIPTION

Code	Description	Qty.
S1	Trigger Switch	1
S2	Remote Electronic Assembly	1

WIRING INSTRUCTIONS

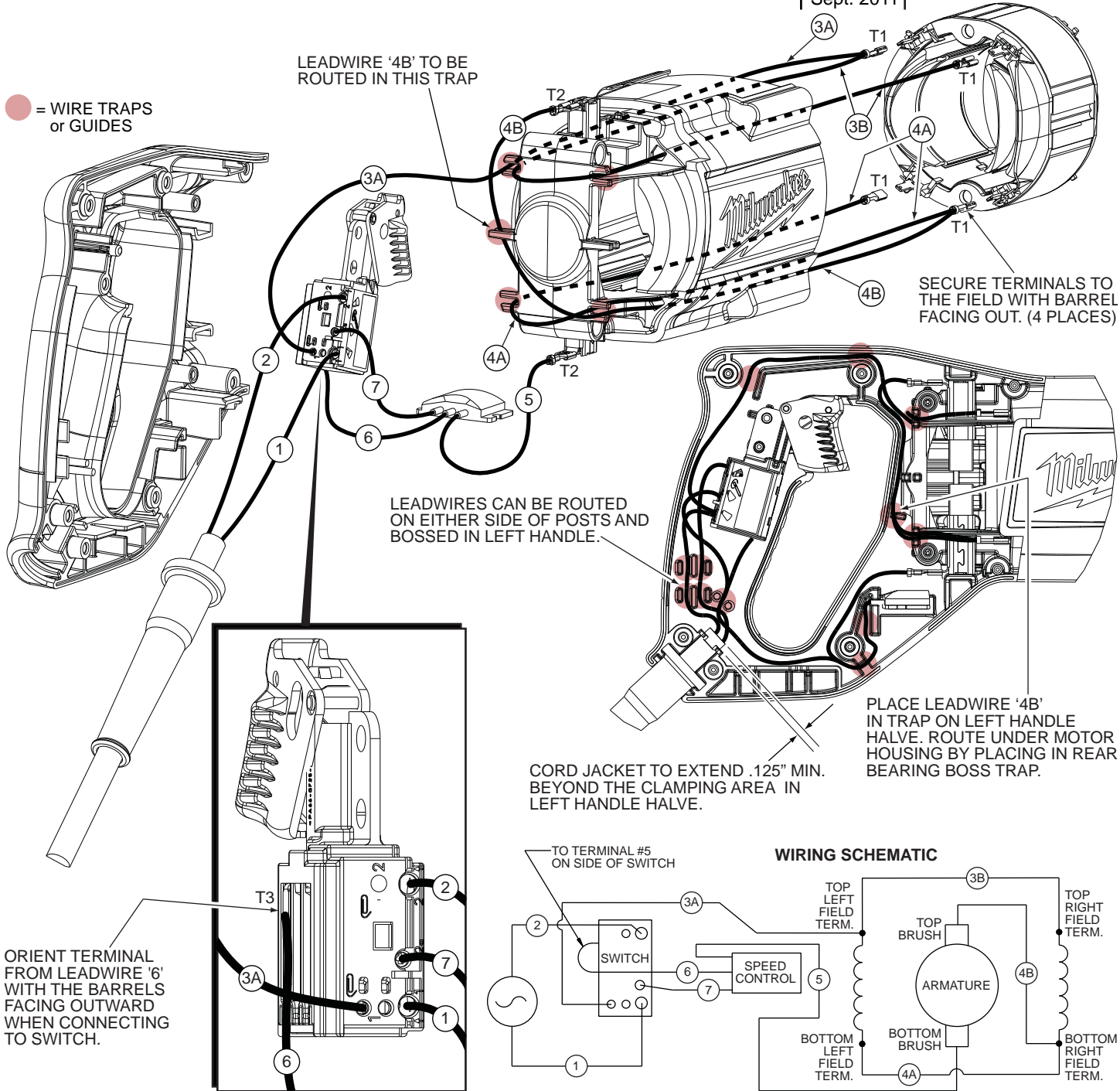
TITLE

SAWZALL

BULLETIN

58-01-0291

DATE
Sept. 2011



WIRING SPECIFICATIONS

Wire No.	Wire Color	Origin or Gauge	Length	Terminals, Connectors and 1 or 2 End Wire Preparation
1	White	Cordset	3-1/4"	Strip 5/16" and tin. Connect to '1↑' on switch.
2	Black	Cordset	3-3/4"	Strip 5/16" and tin. Connect to '2↑' on switch.
3A	White	23-94-0520	-----	From the top left field position, connect tinned end to '1' on switch.
3B	White	23-94-0520	-----	From top left field position, connect terminal to top right field position.
4A	Black	23-94-0510	-----	From bottom right field position, connect terminal to bottom left field position.
4B	Black	23-94-0510	-----	From the bottom right field position, connect terminal to top brush.
5	Black or Blue	Remote Mod.	-----	Component of 14-20-3155. Connect to bottom brush.
6	Black or Yellow	Remote Mod.	-----	Component of 14-20-3155. Connect to '5' on right side of switch.
7	Black	Remote Mod.	-----	Component of 14-20-3155. Connect tinned end to '2a' on switch.

BULK LEAD WIRE - BULLETIN NO. 58-01-0003

NOTE:

All leads must be held to $\pm 1/8"$.
All lead lengths are before stripping.

TERMINAL DESCRIPTION

Code	Part No.	Qty.
T1	23-94-1060	4
T2	23-94-0017	2
T3	23-94-0010	1

WIRING INSTRUCTIONS

TITLE

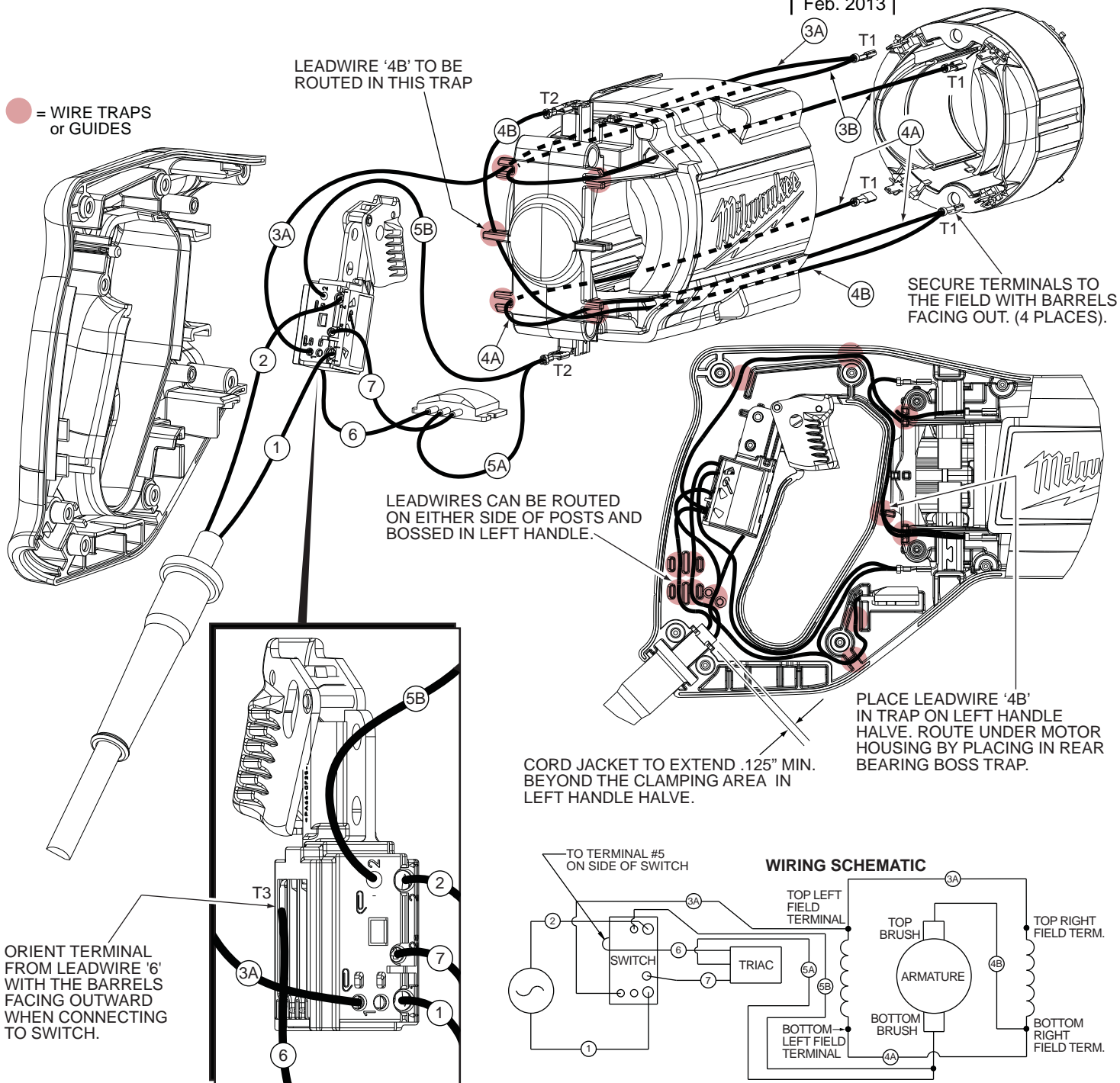
SAWZALL

BULLETIN

58-01-0293

DATE
Feb. 2013

● = WIRE TRAPS
or GUIDES



WIRING SPECIFICATIONS

Wire No.	Wire Color	Origin or Gauge	Length	Terminals, Connectors and 1 or 2 End Wire Preparation
1	White	Cordset	3-1/4"	Strip 5/16" and tin. Connect to '1↑' on switch.
2	Black	Cordset	3-3/4"	Strip 5/16" and tin. Connect to '2↑' on switch.
3A	White	23-94-0520	-----	From the top left field position, connect tinned end to '1' on switch.
3B	White	23-94-0520	-----	From top left field position, connect terminal to top right field position.
4A	Black	23-94-0510	-----	From bottom right field position, connect terminal to bottom left field position.
4B	Black	23-94-0510	-----	From the bottom right field position, connect terminal to top brush.
5A	Yellow	Remote Mod.	-----	Terminated with 5B. Connect terminal T2 to bottom brush.
5B	Red	Remote Mod.	-----	Terminated with 5A. Connect tinned end to '2' on switch.
6	Black	Remote Mod.	-----	Connect to '5' on right side of switch.
7	Blue	Remote Mod.	-----	Connect tinned end to '2a' on switch.

NOTE:

All leads must be held to $\pm 1/8"$.
All lead lengths are before stripping.

TERMINAL DESCRIPTION

Code	Part No.	Qty.
T1	23-94-1060	4
T2	23-94-0017	2
T3	23-94-0010	1

Drwg. 1