



Installation instructions for 99-30105

Chevrolet Camaro 2010-up 99-30105

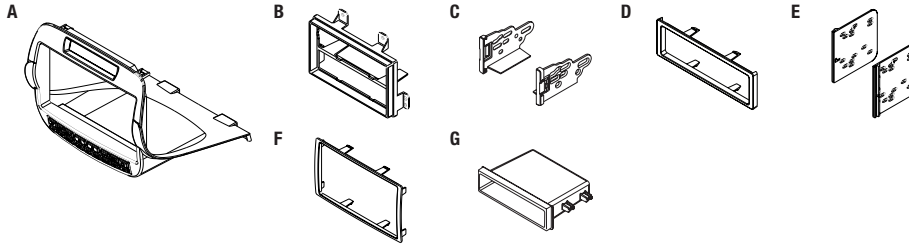
KIT FEATURES

- DIN radio provision with pocket
- ISO DIN radio provision with pocket
- Double DIN radio provision
- *Painted silver to match factory finish*



KIT COMPONENTS

- A) Radio trim panel • B) Radio housing • C) ISO brackets • D) ISO trim plate • E) Double DIN brackets
- F) Double DIN trim plate • G) Pocket



WIRING & ANTENNA CONNECTIONS (sold separately)

Wiring Harness:

- Axxess interface included

Antenna Adapter:

- 40-EU55 - Amplified antenna adapter

TOOLS REQUIRED

- Panel removal tool • Phillips screwdriver
- Socket wrench

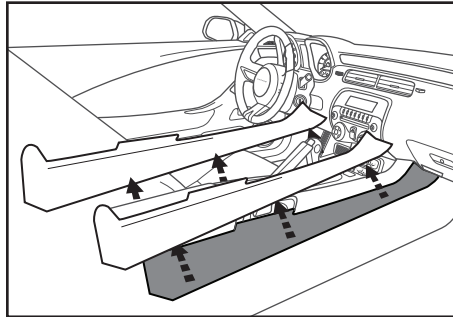
CAUTION: Metra recommends disconnecting the negative battery terminal before beginning any installation. All accessories, switches, and especially air bag indicator lights must be plugged in before reconnecting the battery or cycling the ignition.

NOTE: Refer to the instructions included with the aftermarket radio.

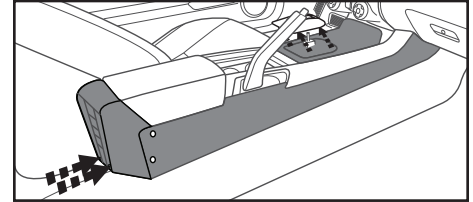
Chevrolet Camaro 2010-up

1. Unclip and remove the (2) side trim panels running the length of the center console. (Figure A)
2. Remove (1) 9/32" screw from each side of the front of the center console. (Figure B)
3. Remove (2) 9/32" screws per side from the cover on the back of the center console then unclip and remove the cover. (Figure C)
4. Remove (2) 9/32" screws exposed under the cover on the back of console. (Figure D)

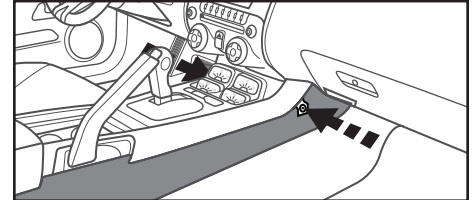
Continue onto next page



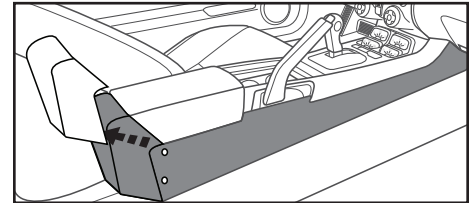
(Figure A)



(Figure D)



(Figure B)

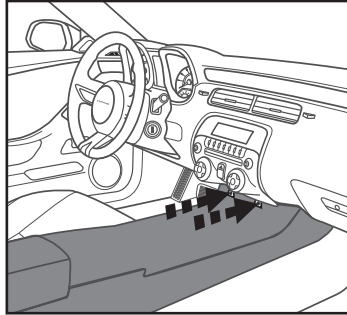


(Figure C)

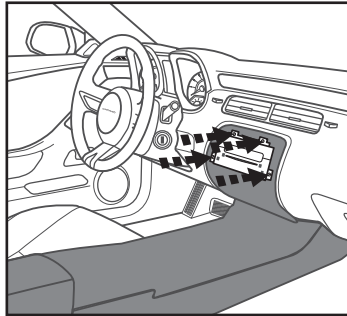
Chevrolet Camaro 2010-up

5. Lift up on the rear of the console and slide toward the back of the vehicle then unclip and remove the entire center console. (Figure E)
6. Remove (2) 9/32" screws securing the climate control/radio trim panel and remove. (Figure F)
7. Remove (4) Phillips screws securing the radio chassis. (Figure G)

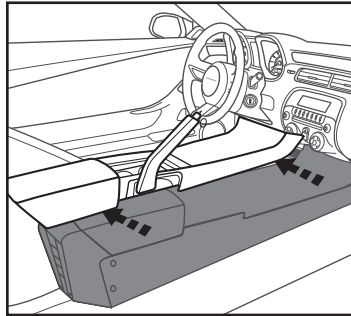
Continue to kit preparation



(Figure F)



(Figure G)

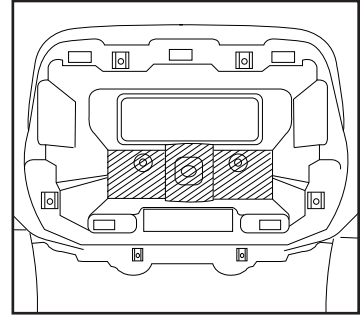


(Figure E)

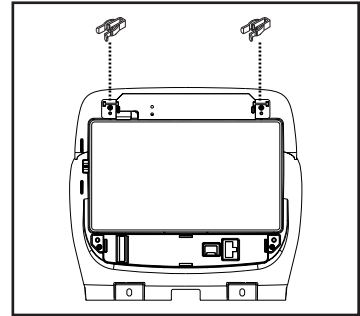
Kit Preparation

1. Cut and remove the sub dash radio support to make room for the interface and harnesses. (Figure A)
2. Remove panel clips from factory radio and attach to the top of the kit housing. (Figure B)

Continue to kit assembly



(Figure A)



(Figure B)

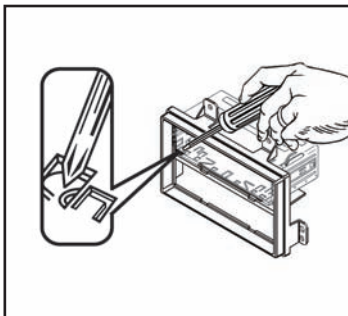


Kit Assembly 99-3010S

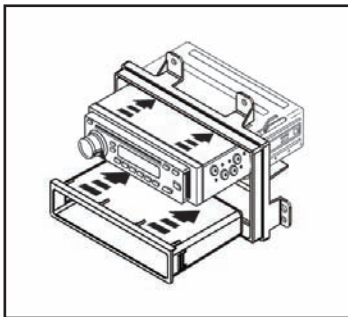
DIN radio provision with pocket

1. Slide the DIN cage into the radio housing and secure by bending the metal locking tabs down. (Figure A)
2. Snap the pocket into the bottom opening of the radio housing. (Figure B)
3. Slide the aftermarket radio into the cage and secure. (Figure B)
4. Reassemble dash in reverse order of disassembly using the 99-3010S radio trim panel instead of the factory panel.

Continue to Axxess interface installation and then reassemble.



(Figure A)

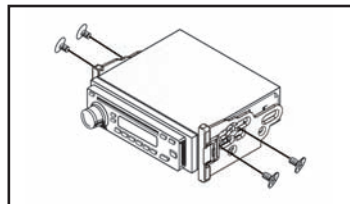


(Figure B)

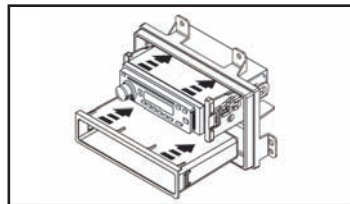
ISO DIN radio provision with pocket

1. Mount the ISO brackets to the radio with the screws supplied with the radio. (Figure A)
2. Snap the pocket into the bottom opening of the radio housing. (Figure B)
3. Slide the radio into the radio opening until the side clips engage. (Figure B)
4. Snap the trim plate into the radio housing. (Figure C)
5. Reassemble dash in reverse order of disassembly using the 99-3010S radio trim panel instead of the factory panel.

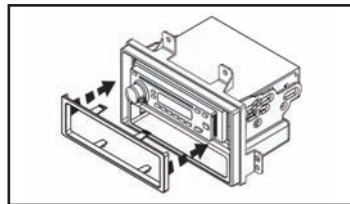
Continue to Axxess interface installation and then reassemble.



(Figure A)



(Figure B)

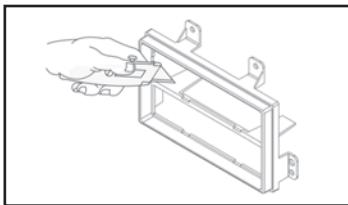


(Figure C)

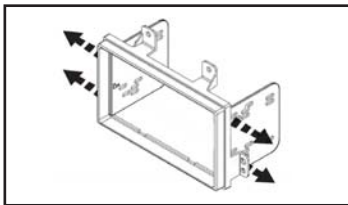
Double DIN radio provision

1. Cut and remove the center support. (Figure A)
2. Snap the double DIN brackets to the inside edge of the double DIN radio housing. (Figure B)
3. Slide the double DIN radio into the bracket/radio housing assembly and secure it using the screws supplied with the radio. (Figure C)
4. Snap the double DIN trim plate into the double DIN radio housing. (Figure C)
5. Reassemble dash in reverse order of disassembly using the 99-3010S radio trim panel instead of the factory panel.

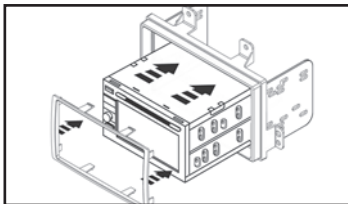
Continue to Axxess interface installation and then reassemble.



(Figure A)



(Figure B)



(Figure C)

Axxess interface installation

FEATURES

- Provides accessory (12-volt 10-amp)
- Retains R.A.P. (Retained Accessory Power)
- Can be used in amplified, or non-amplified models
- Retains all warning chimes
- Provides NAV outputs (parking brake, reverse, mute, and V.S.S.)
- Retains OnStar/OE Bluetooth
- Adjustable volume for chimes and OnStar
- High level speaker input
- Retains balance and fade
- Micro "B" USB updatable

INTERFACE COMPONENTS

- 3010S interface • 3010S harness • HVAC harness • 16-pin harness with stripped leads • 4-pin to 4-pin resistor pad harness

TOOLS REQUIRED

- Cutting tool • Crimping tool • Tape
 - Connectors (butt-connectors, bell caps, etc.)
-



Axxess interface installation 99-3010S

Connections to be made

From the 16-pin harness to the aftermarket radio:

- Connect the (2) **Red** wires to the accessory wire.

***Note:** If using the optional ASWC-1 or AX-LCD, there will be accessory wires there to connect as well.*

- Connect the **Orange/White** wire to the illumination wire. (If the aftermarket radio has no illumination wire, tape off the **Orange/White** wire).
- Connect the **Blue/White** wire to the amp turn on wire (this wire must be connected to hear sound from the factory amplifier).
- Connect the **Brown** wire to the mute wire of the aftermarket radio. If the radio has no mute wire, tape it off and disregard it.
- Connect the **White** wire to the left front positive speaker output.
- Connect the **White/Black** wire to the left front negative speaker output.

- Connect the **Gray** wire to the right front positive speaker output.
- Connect the **Gray/Black** wire to the right front negative speaker output.
- Tape off and disregard the **Green, Green/Black, Purple, and Purple/Black** wire, they will not be used in this application.

The following wires are for aftermarket multimedia/navigation radios that provide these wires (if not required, tape them off and disregard them):

- Connect the **Light Green** wire to the parking brake wire (if applicable).
- Connect the **Blue/Pink** wire to the speed sense wire (if applicable).
- Connect the **Green/Purple** wire to the reverse wire (if applicable).

From the 3010S harness to the aftermarket radio:

- Connect the **Black** wire to the ground wire.
- Connect the **Yellow** wire to the battery wire.

- Connect the **Pink** wire to the **Pink** wire located in the HVAC harness (ignore the writing on this wire, this is NOT a “mute” wire).
- Connect the **Red** and **White** RCA jacks to the audio AUX-IN jacks (if equipped).

Note:

- (1) *This will allow you to retain the 3.5mm AUX-IN JACK located in the center console.*
- (2) *The jack can only be used if it is a single jack.*
- (3) *If the jack has a USB port as well, neither can be retained.*

(a) for amplified models:

- Disconnect the 4-pin harness located between the 44-way and 22-way connector, and then connect the supplied 4-pin to 4-pin resistor pad harness.
- Connect the **Violet** wire to the right rear positive wire.
- Connect the **Violet/Black** wire to the right rear negative wire.
- Connect the **Green** wire to the left

rear positive wire.

- Connect the **Green/Black** wire to the left rear negative wire.

(b) for non-amplified models:

- Leave intact the 4-pin harness located between the 44-way and 22-way connector.

***Note:** The supplied 4-pin to 4-pin resistor pad harness will not be used in this application.*

- Cut the resistors from the **Green, Green/Black, Purple, Purple/Black** wires right below the heat shrink
- Connect the **Violet** wire to the right rear positive wire.
- Connect the **Violet/Black** wire to the right rear negative wire.
- Connect the **Green** wire to the left rear positive wire.
- Connect the **Green/Black** wire to the left rear negative wire.

From the 12-pin pre-wired ASWC-1 harness to the aftermarket radio:

- The 12-pin harness is to be used in



Axxess interface installation 99-3010S

conjunction with the optional ASWC-1 (not included) to retain steering wheel controls. If the ASWC-1 is not being used, disregard this harness. If it will be used, please refer to the ASWC-1 instructions for radio connections and programming.

Note: *The relay attached to the Axxess interface is only for audible turn signal clicks. No extra steps are required to retain this feature, so leave the relay as-is.*

Installing the Axxess interface

With the key in the off position:

- Connect the 16-pin harness with stripped leads into the interface.
- Connect the 3010S harness into the interface.
- Connect the 3010S harness into the vehicle.
- With all connections completed, reconnect the negative battery terminal.

Initializing the Axxess interface

Attention: *If the Axxess interface loses power for any reason, the following steps will need to be performed again.*

- Initialize the interface by turning the ignition on for 30 seconds, then turn the ignition back off, then back on again.

Note: *If using the ASWC-1, connect it after you initialize the Axxess interface, with the key in the off position.*

- Cycle the A/C fan speed all the way to high, and then back to low.

Chime volume adjustment

- With the vehicle on, shut the vehicle off and leave the keys in the ignition. Open the driver's door and leave it open; chimes will be heard.
- Wait 10 seconds, and then with a small screwdriver, adjust the potentiometer fully counterclockwise

(all the way left). Turn clockwise to raise the chime level, and counterclockwise to lower the chime level.

- When the chime is at the desired level, remove the keys from the ignition; this will lock the chime level in.

OnStar volume adjustment

- Press the OnStar button to activate it.
- While OnStar is speaking, press the VOLUME UP or VOLUME DOWN buttons on the steering wheel to raise or lower the OnStar level.
- If the vehicle does not come equipped with steering wheel controls, find the Black/Yellow wire on the 22-pin harness.
- While OnStar is speaking, tap the Black/Yellow wire to ground. Once the OnStar level is set, it will stay at that level until the Black/Yellow wire is tapped to ground again.

Vehicle customization with the optional AX-LCD (sold separately)

The AX-LCD allows the retention of the vehicles personalization menu that is lost after removing the OE radio.

- Press the "ESC" button; "Press Enter to Set Language" will appear on the screen.
- To change language, press the "Enter" button, and then press the "Up" and "Down" buttons to change language.
- Once you have chosen the desired language, press the "ESC" button to return to the main menu.
- If you do not wish to change language, you can scroll up and down through the different settings with the "Up" and "Down" buttons.
- Remember to press "Enter" to change the desired setting.



Installation instructions for 99-30105

Changing display backlight color

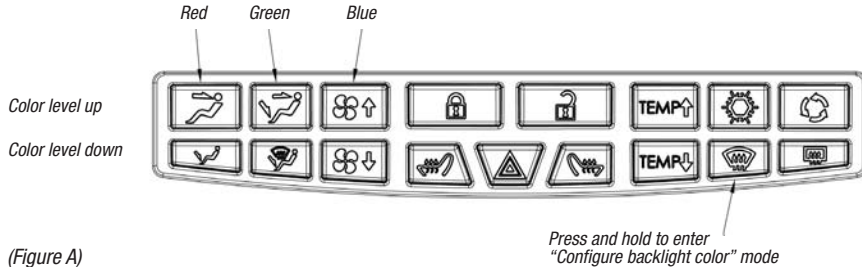
1. Press the front defrost button for 5 seconds, this will engage the “Configure Backlight Color” mode. (Figure A)

Note: Backlight will blink while in this mode.

2. Create your backlight color (Figure A):

- Press and hold the “Face” button to increase **Red**.
- Press the “Foot” button to decrease **Red**.

- Press and hold the “Face/Foot” button to increase **Green**.
 - Press and hold the “Def/Foot” button to decrease **Green**.
 - Press and hold the “Fan Up” button to increase **Blue**.
 - Press and hold the “Fan Down” button to decrease **Blue**.
3. After you have your desired color stop pressing the button(s) and the blinking will stop leaving your desired color. (Figure A)



(Figure A)