

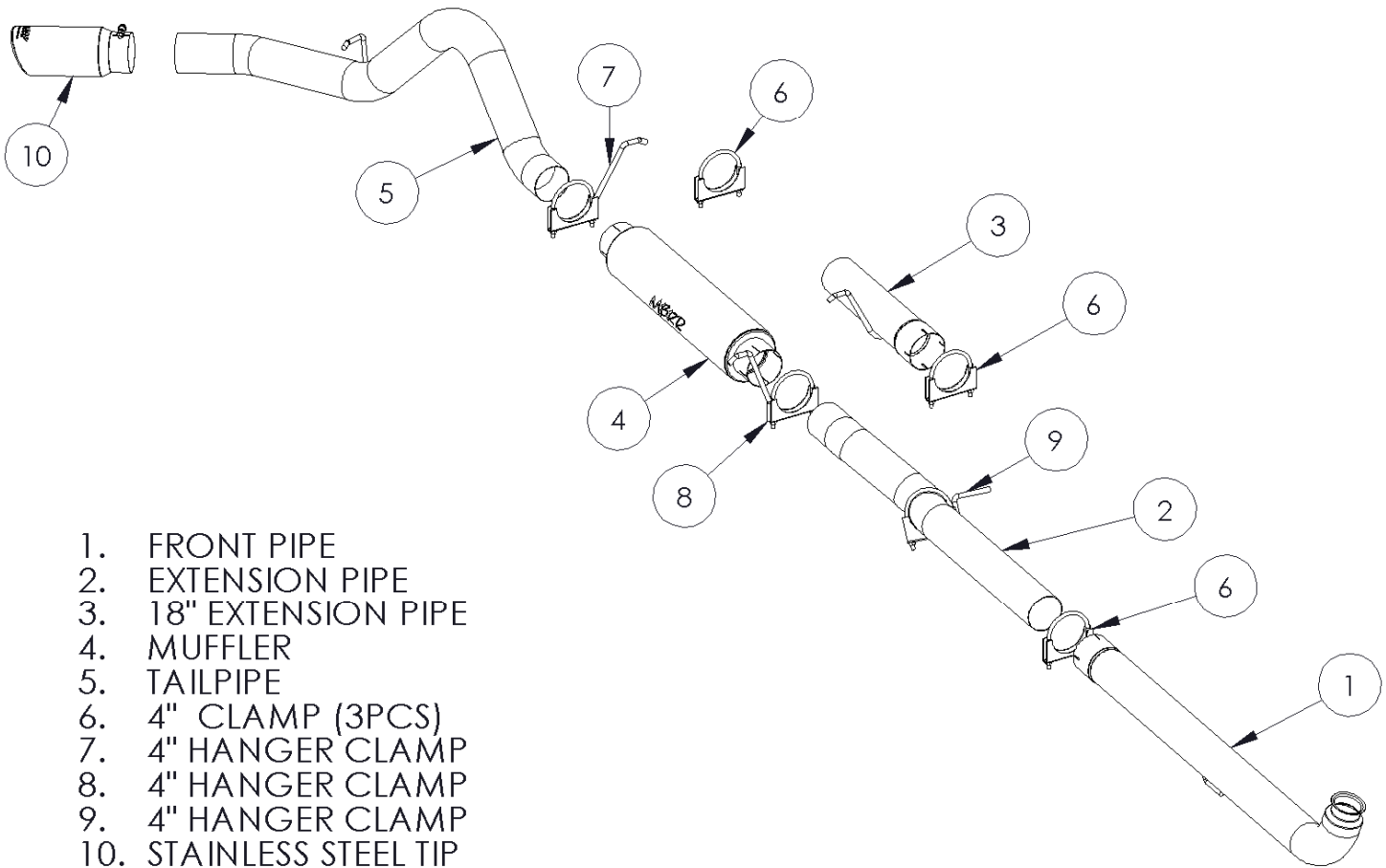
## S6004

01-07 CHEV/GMC 2500/3500 EC/CC  
DURAMAX OFF ROAD 4" SINGLE

# MBRP

INC.

**PERFORMANCE EXHAUST**



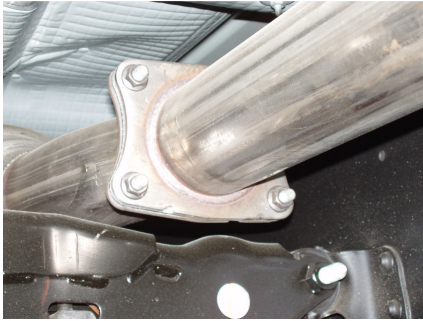
1. FRONT PIPE
2. EXTENSION PIPE
3. 18" EXTENSION PIPE
4. MUFFLER
5. TAILPIPE
6. 4" CLAMP (3PCS)
7. 4" HANGER CLAMP
8. 4" HANGER CLAMP
9. 4" HANGER CLAMP
10. STAINLESS STEEL TIP

### PLEASE READ BEFORE STARTING INSTALATION

While MBRP Inc. has made every effort to ensure that all components of this system are of superior quality and properly packaged it is the installer's responsibility to ensure the following before removal of the factory exhaust:

- that ALL components shown above are present.
- that ALL mating components fit together.
- that there are no damaged components.
- that the system you have purchased is appropriate for your vehicle year, model and configuration.
- that the system will not interfere with any modifications previously installed or planned.
- that you have read and understand these instructions.

If you have any questions or are uncertain about any aspect of the installation of this system to your vehicle please contact your dealer before commencing installation.



**Figure 1**



**Figure 2**



**Figure 3**



**Figure 4**

## Removal of stock system:

1. Apply penetrating lubricant liberally to all exhaust fasteners, hangers and rubber insulators.
2. Using a 15mm socket or wrench, disconnect the factory exhaust system at the four bolt flange located behind the catalytic converter. If the vehicle is not equipped with a catalytic converter disconnect the four bolt flange located approximately under the passenger seat. **See Figure 1.**
3. Remove the exhaust system from the rubber insulators and remove from under the vehicle. If a hoist is not available for use it may be necessary to cut the tail pipe behind the muffler for removal of the system.
4. Unbolt the OEM hanger from the transmission and remove. **Do not discard the hanger as it is required for the installation. See Figure 2.**
5. Loosen the factory band clamp and remove the stock front pipe. **See Figure 3. Do not discard the band clamp as it is required for the installation.**

## Installation of MBRP Inc. Performance Exhaust:

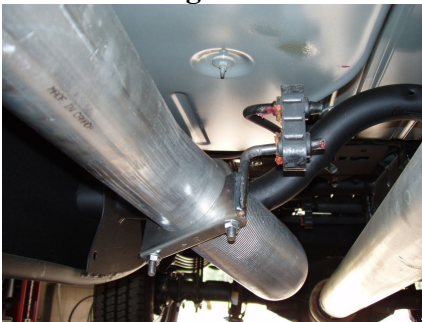
1. Install the Front Pipe onto the factory down pipe using the band clamp removed previously. Do not fully tighten to allow for adjustment. **See Figure 4.**



**Figure 5**



**Figure 6**



**Figure 7**

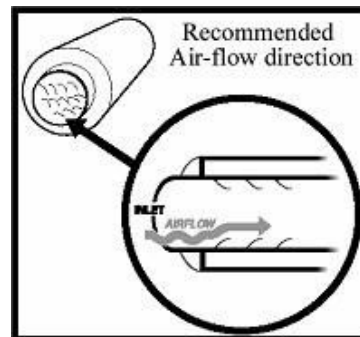


**Figure 8**



**Figure 9**

2. Install the hanger removed previously by sliding the outside hole in the rubber insulator over the hanger on the **Front Pipe** and re-connect to the transmission. **See Figure 5.**
3. Connect the **Extension Pipe** to the **Front Pipe** at the slip joint placing the bend around and under the cross member. Rotate the **Extension Pipe** to position the bend towards the driveshaft. **See Figure 6.** The **Extension Pipe** does not require cutting to fit Crew Cab trucks. For Extended Cab trucks, approximately 9 ½" needs to be cut off the end with the longest straight section of pipe. (**Installation tip:** Temporarily hang the **Muffler** and **Passenger Side Tail Pipe** in place and measure to the four bolt flange to verify the length required).
4. Position the **Extension Pipe** as shown and loosely install the **Hanger Clamp** with the shortest hanger. **See Figure 7.** This will support **Extension Pipe** during the **Muffler** installation.
5. Crew Cab & Extended Cab long box trucks require the use of the **18" Extension Pipe** provided. This is to be positioned between the **Muffler** and the **Extension Pipe**. **See Figure 8.** The **18" Extension Pipe** is not required with short box trucks.
6. Install the **Muffler** on the **Extension Pipe**. **See Figure 9.** **See Figure 10** for the proper direction of air flow through the **Muffler**.



**Figure 10**



**Figure 11**



**Figure 12**

7. Install the **Tail Pipe** from the rear of the truck, over the axle and attach to the **Muffler Outlet**. Install the **Tail Pipe Hanger** into the OEM hanger, adjust for best axle clearance and **Tail Pipe** location to complete. **See Figure 11.**
8. Install the **Hanger Clamp** with the longest hanger at the connection between the **Muffler** and the **Tail Pipe** and into the OEM rubber hanger at this position. **See Figure 12.**
9. Install remaining **Clamps** around pipes as shown in the opening diagram. Adjust **Tail Pipe** and check along the whole length of the exhaust system to ensure that there is adequate clearance around the spare tire, fuel and brake lines or any wiring. If any interference is detected, relocate or adjust.
10. Make sure the exhaust is in place before tightening clamps. Start at the front of the exhaust system and begin tightening all connections.
11. Install and adjust **Tip** to suit. Using a 17mm wrench tighten lock bolt located on **Tip**.



**Congratulations!** You are ready to begin experiencing the improved power, sound and driving excitement of your MBRP Inc. performance exhaust system. We know you will enjoy your purchase.