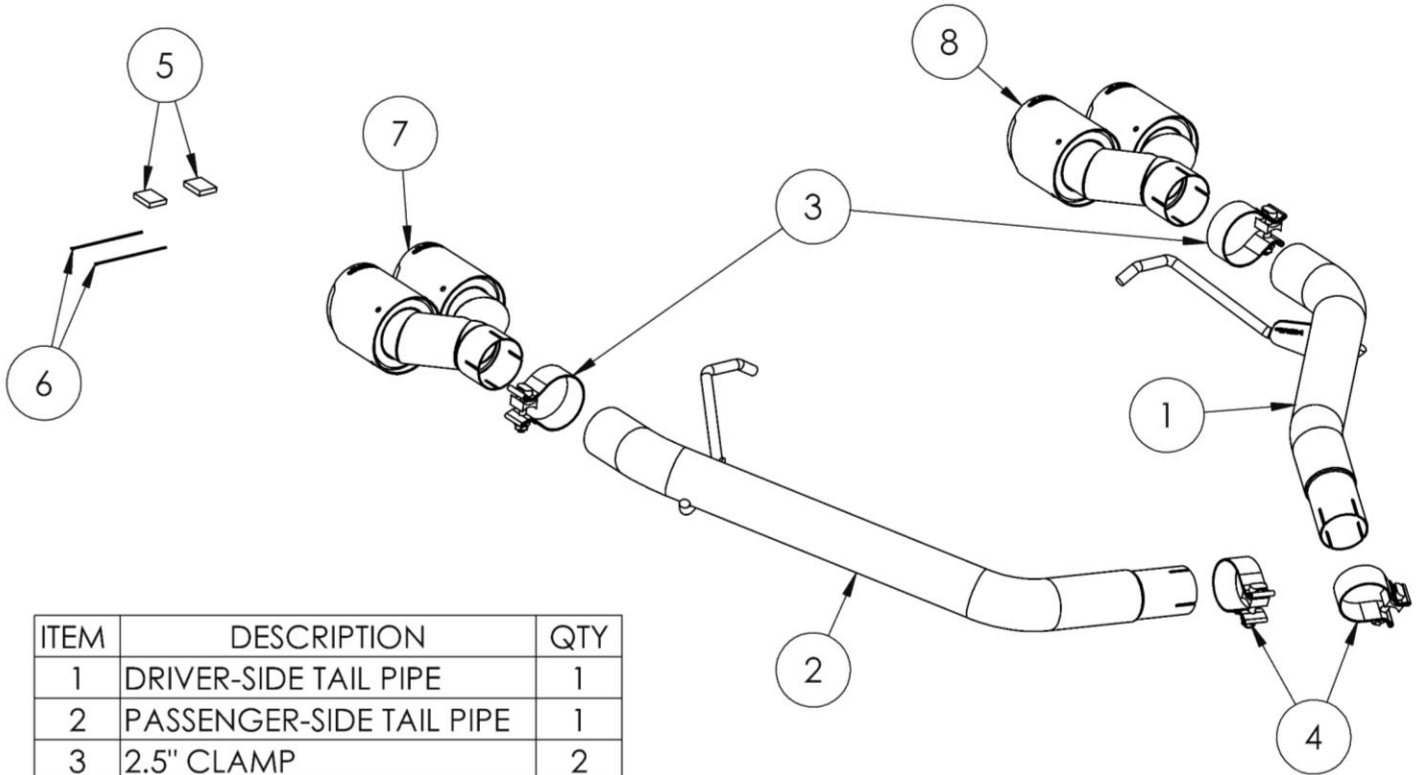


# S5603

2014-2017 AUDI SQ5, 3.0T, AXLE-BACK, 2.5"  
DUAL REAR, QUAD TIPS

# MBRP®



ITEM	DESCRIPTION	QTY
1	DRIVER-SIDE TAIL PIPE	1
2	PASSENGER-SIDE TAIL PIPE	1
3	2.5" CLAMP	2
4	2.17" CLAMP	2
5	VALVE SIMULATOR	2
6	CABLE TIE	2
7	PASSENGER-SIDE TIP	1
8	DRIVER-SIDE TIP	1

## PLEASE READ BEFORE STARTING INSTALLATION

While MBRP has made every effort to ensure that all components of this system are of superior quality and properly packaged, it is the installer's responsibility to ensure the following before removal of the factory exhaust:

- that ALL components shown above are present.
- that ALL mating components fit together.
- that there are no damaged components.
- that the system you have purchased is appropriate for your vehicle year, model and configuration.
- that the system will not interfere with any modifications previously installed or planned.
- that you have read and understand these instructions.

If you have any questions or are uncertain about any aspect of the installation of this system to your vehicle please contact your dealer before commencing installation.

# MBRP

## Removal of Stock System



**Figure 1**



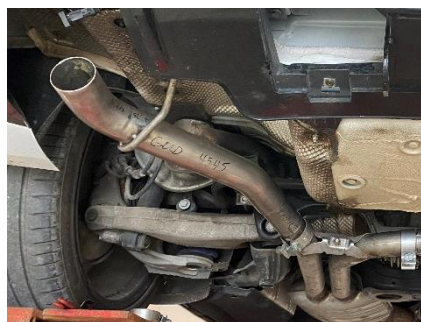
**Figure 2**



**Figure 3**



**Figure 4**



**Figure 5**

1. Apply a penetrating lubricant liberally to all hangers and rubber isolators.
2. Unplug the valves located on the inward tips on each side.
3. Measure 4.0" from the welded bracket towards the outlet on the driver-side, mark and cut.  
**Refer to Figure 1.**
4. Measure 7.25" from the welded bracket towards the outlet on the passenger-side, mark and cut.  
**Refer to Figure 2.**
5. Remove both mufflers from vehicle.

## Installation of MBRP Performance Exhaust:

1. Connect the **Valve Simulators** to the factory wiring harness and secure with the provided **Cable Ties**.  
**Refer to Figure 3**
2. Using a **2.17" Band Clamp**, install the **Passenger-Side Tail Pipe** onto the factory exhaust and insert into the factory rubber isolator.  
**Refer to Figure 4.**
3. Repeat step 2 for the **Driver-Side Tail Pipe**.  
**Refer to Figure 5.**
4. Using the **2.5" Band Clamps**, install the **Passenger-Side Tip** and **Driver-Side Tip** onto the **Tail Pipes**.  
**Refer to Figures 6&7**

# MBRP



**Figure 6**



**Figure 7**

4. Align the edge of each band clamp with the edge of the joint it is connecting. Tighten all hardware and clamps, starting at the front and working rearward to secure the system. Check along the full length of the exhaust system to ensure there is adequate clearance for fuel lines, vent lines, brake lines, frame, bodywork, suspension, and any wiring, etc. If there is any interference detected, relocate, or adjust to provide adequate clearance. Ensure all clamp connections are secure and components are unable to rotate or slide. Band clamps require approximately 45 lb-ft (60 N-m) of torque. Verify clearances, system security and band clamp torque after 30- 60 miles (50-100 km) of driving.



**Congratulations!** You are ready to begin experiencing the improved power, sound and driving experience of your **MBRP** performance exhaust system. We know you will enjoy your purchase.

Discover other performance exhaust systems on our website.