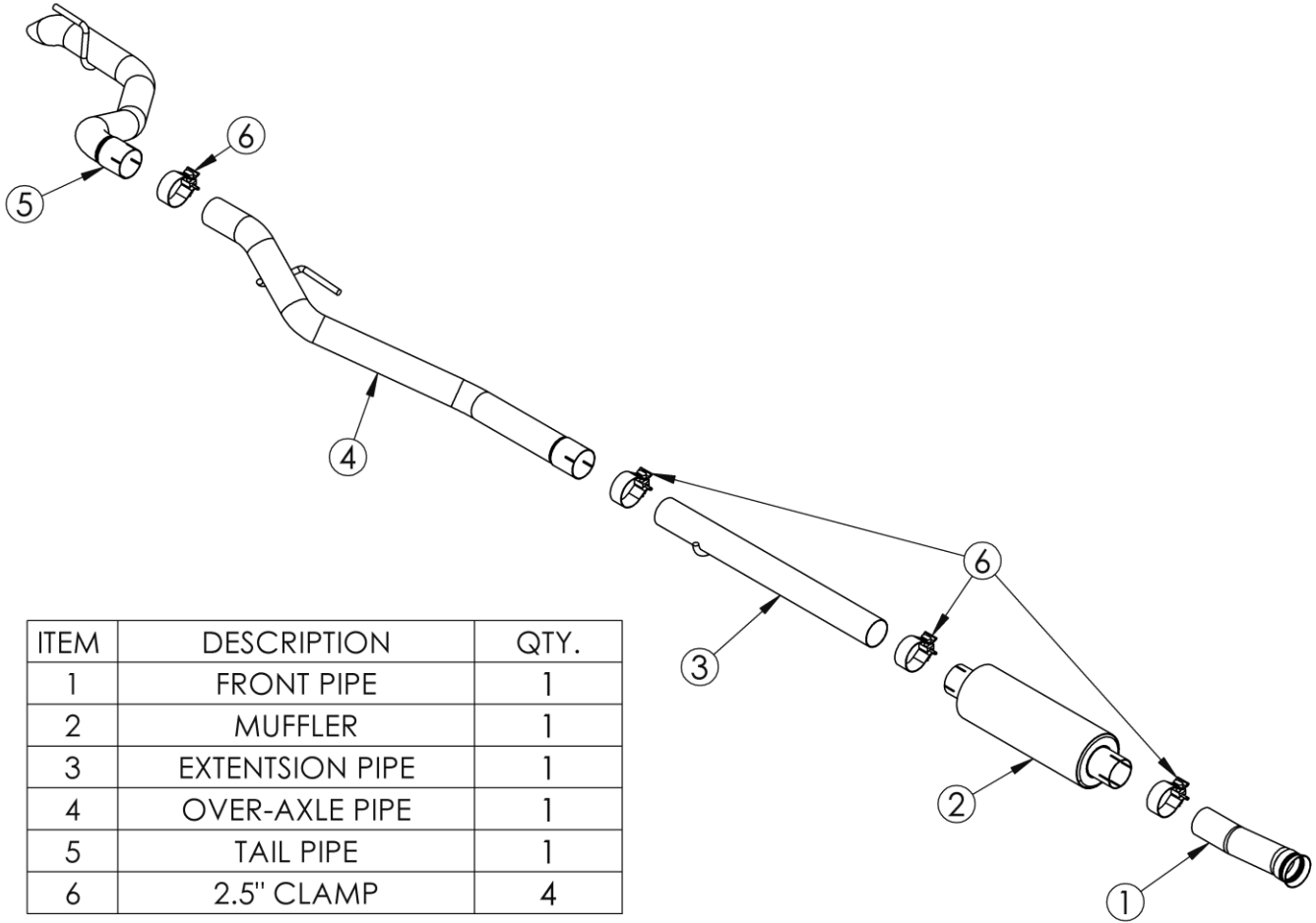


S5537

2020-UP JEEP GLADIATOR,
3.6L, CAT BACK, OFF-ROAD,
2.5" SINGLE REAR EXIT

MBRP



ITEM	DESCRIPTION	QTY.
1	FRONT PIPE	1
2	MUFFLER	1
3	EXTENSION PIPE	1
4	OVER-AXLE PIPE	1
5	TAIL PIPE	1
6	2.5" CLAMP	4

PLEASE READ BEFORE STARTING INSTALLATION

While MBRP Inc. has made every effort to ensure that all components of this system are of superior quality and properly packaged, it is the installer's responsibility to ensure the following before removal of the factory exhaust:

- that ALL components shown above are present.
- that ALL mating components fit together.
- that there are no damaged components.
- that the system you have purchased is appropriate for your vehicle year, model and configuration.
- that the system will not interfere with any modifications previously installed or planned.
- that you have read and understand these instructions.

If you have any questions or are uncertain about any aspect of the installation of this system to your vehicle please contact your dealer before commencing installation.

MBRP

Removal of Stock System:

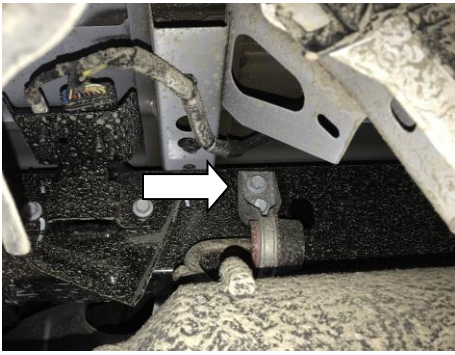


Figure 1



Figure 2



Figure 3

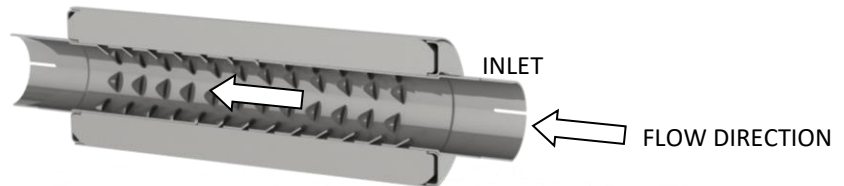


Figure 4

1. Apply a penetrating lubricant liberally to all exhaust fasteners, hangers and rubber insulators.
2. Start to remove the exhaust by removing the rear hanger bracket. **Refer to Figure 1.**
3. Lower the spare tire and remove the heat shield beside the spare tire. **Refer to Figure 2.**
4. Loosen the clamp attached to the extension pipe and remove the pipe from the factory isolator. **Refer to Figure 3.**
5. In order to reuse the stock clamp, pry back the small tab on the extension pipe so that the clamp can be removed. **Refer to Figure 3.**

Installation of MBRP Performance Exhaust

1. Install the **Front Pipe** using the stock clamp. Leave the clamp loose enough to rotate the pipe for adjustment. **Refer to Figure 4.**
2. Slide a 2 ½" **Clamp** over the **Front Pipe** and then install the **Muffler** onto the **Front Pipe**. Orient the muffler such that the louvers (inside the muffler) are open to the front of the vehicle. See diagram.



MBRP



Figure 5



Figure 6



Figure 7

3. Slide a 2 ½” **Clamp** onto the **Muffler** outlet. Install the **Extension Pipe** into the **Muffler**, then install the hanger into the factory rubber insulator.

Refer to Figure 5.

4. Slide a 2 ½” **Clamp** onto the **Extension Pipe**. Install the **Over-Axle Pipe** into the **Extension Pipe**, then install the hanger into the factory rubber insulator.

Refer to Figure 6.

5. Install the hanger bracket removed in step 2 onto the **Tail Pipe** hanger. Slide a 2 ½” **Clamp** onto the **Over-Axle Pipe** and install the **Tail Pipe**. Reinstall the hanger bracket back onto the frame.

Refer to Figure 7.

6. Re-install the heat shield removed in step 3 and raise the spare tire back into the original position.

7. Align the exhaust as required. Starting at the front of the exhaust, tighten all clamps and connections.

8. Check along the whole length of the exhaust system to ensure that there is adequate clearance around any fuel and brake lines or any wiring. If any interference is detected relocate or adjust.



Congratulations! You are ready to begin experiencing the improved power, sound and driving experience of your **MBRP** performance exhaust system. We hope you enjoy your purchase.

Check out the collection of performance exhaust systems we offer.