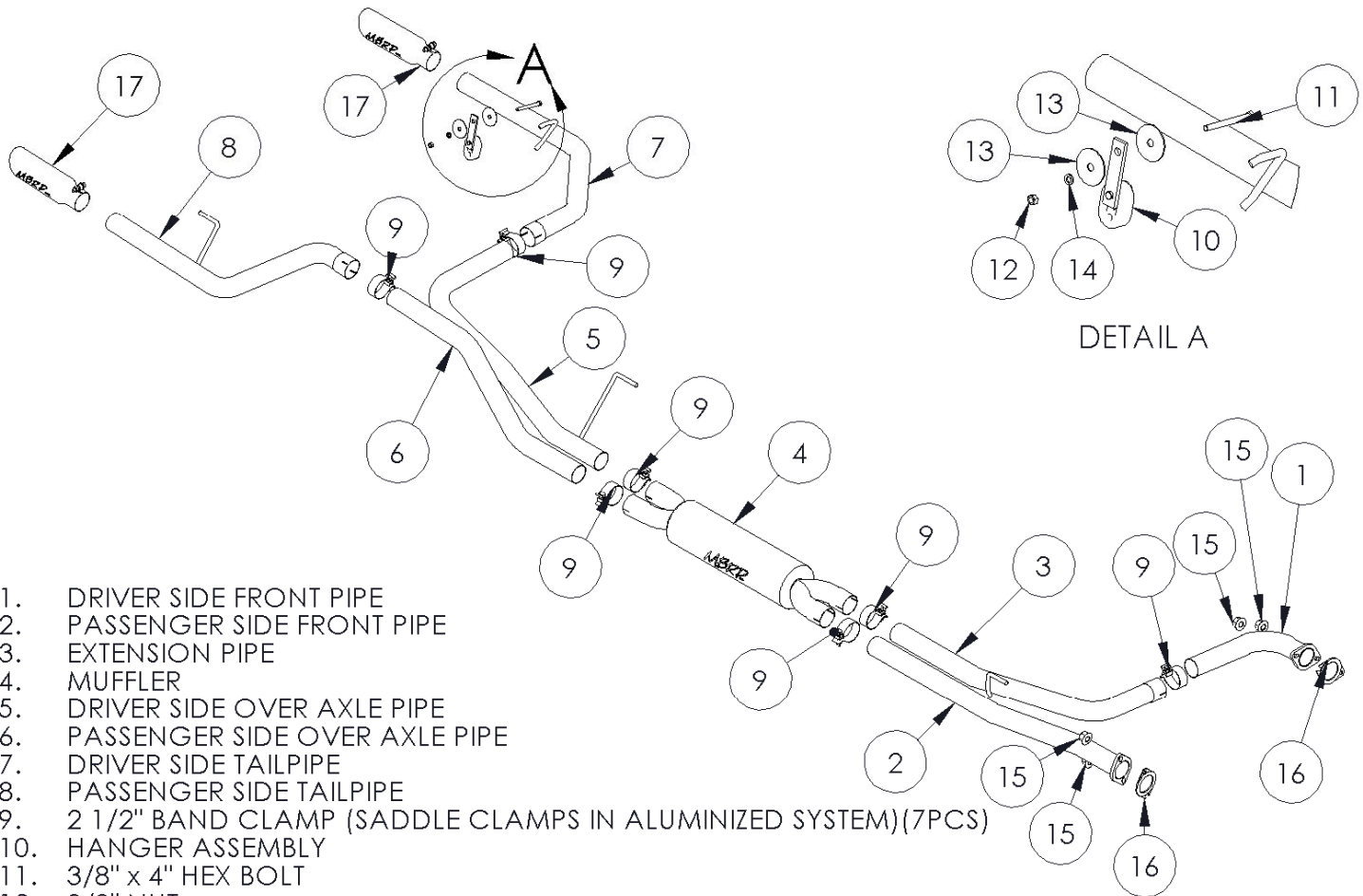


S5402

NISSAN TITAN 04-12 5.4L V8, DUAL
SPLIT REAR



1. DRIVER SIDE FRONT PIPE
2. PASSENGER SIDE FRONT PIPE
3. EXTENSION PIPE
4. MUFFLER
5. DRIVER SIDE OVER AXLE PIPE
6. PASSENGER SIDE OVER AXLE PIPE
7. DRIVER SIDE TAILPIPE
8. PASSENGER SIDE TAILPIPE
9. 2 1/2" BAND CLAMP (SADDLE CLAMPS IN ALUMINIZED SYSTEM)(7PCS)
10. HANGER ASSEMBLY
11. 3/8" x 4" HEX BOLT
12. 3/8" NUT
13. 7/16" FLAT WASHER (2PCS)
14. 3/8" LOCK WASHER
15. 2 1/2" GASKET (2PCS)
16. 10mm FLANGE NUT (4PCS)
17. EXHAUST TIP(2PCS)

NOTE: SADDLE CLAMPS ARE USED IN ALUMINIZED SYSTEM

PLEASE READ BEFORE STARTING INSTALLATION

While MBRP Inc. has made every effort to ensure that all components of this system are of superior quality and properly packaged, it is the installer's responsibility to ensure the following before removal of the factory exhaust:

- that ALL components shown above are present.
- that ALL mating components fit together.
- that there are no damaged components.
- that the system you have purchased is appropriate for your vehicle year, model and configuration.
- that the system will not interfere with any modifications previously installed or planned.
- that you have read and understand these instructions.

If you have any questions or are uncertain about any aspect of the installation of this system to your vehicle please contact your dealer before commencing installation.



2004-2012 Nissan Titan

Removal of Stock System



Figure 1



Figure 2

1. Apply a penetrating lubricant liberally to all exhaust fasteners, hangers and rubber insulators.

2. Remove nuts from the exhaust flanges behind the catalytic converters. **Refer to Figure 1 and 2.**



Figure 3

3. Remove existing exhaust hanger. **Refer to Figure 3.**

4. Lubricate then remove hardware from the rearmost exhaust hanger. Keep for reinstallation. **Refer to Figure 4.**



Figure 4

5. Remove hardware from flange behind muffler. Remove the hanger from the rubber insulator. Remove the exhaust from the vehicle. **Refer to Figure 5.**



Figure 5



Installation of MBRP Inc. Performance Exhaust



Figure 6



Figure 7



Figure 8

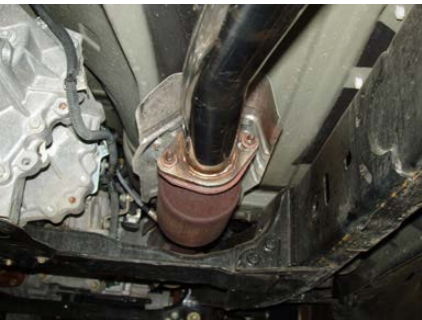


Figure 9



Figure 10

1. Install the Driver Side Front Pipe using one of the provided **2 ½" Gasket** and existing hardware when ever possible. The nuts can be replaced with the **10mm Flange Nuts**. Leave hardware loose enough for some adjustment. **Refer to Figure 6.**

2. Slide a **2 ½" Band Clamp** over the **Extension Pipe** and install to the **Driver Side Front Pipe**. **Refer to Figure 7.**

3. Slide the existing factory hanger onto the **Extension Pipe** and reattach to the vehicle. **Refer to Figure 8.**

4. Install the **Passenger Side Front Pipe** using a **2 ½" Gasket** and existing hardware whenever possible. The nuts can be replaced with the **10mm Flange Nuts**. Leave hardware loose enough for some adjustment. **Refer to Figure 9.**

5. Slide two **2 ½" Band Clamps** onto the **Muffler** and attach to the **Passenger Side Front Pipe** and the **Extension Pipe**. Leave the **2 ½" Band Clamps** loose enough for some adjustment. **Refer to Figure 10.**



Figure 11

6. Slide two 2 1/2" **Band Clamps** onto the **Muffler** install the **Driver Side Over Axle Pipe**. Attach the hanger to the existing rubber insulator. Install the **Passenger Side Over Axle Pipe** to the **Muffler**. Leave connections loose enough for some adjustment. **Refer to Figure 11.**



Figure 12

7. Attach the **Driver Side Tail Pipe** to the **Driver Side Over Axle Pipe** using a **2.5" Band Clamp**. **Refer to Figure 12.**



Figure 13

8. Attach the **Driver Side Tail Pipe** to the frame using the **Hanger Assembly** and the hardware provided. **Refer to Figure 13.**



Figure 14

9. Attach the **Passenger Side Tail Pipe** to the **Passenger Side Over Axle Pipe** using a **2.5" Band Clamp**. Install the hanger into the rearmost rubber insulator and reattach to the frame. **Refer to Figure 14.**

10. Install and adjust the **Exhaust Tips** to suit. Using a 17mm wrench tighten the lock bolt located on each **Exhaust Tip**.

11. Align the exhaust as required. Starting at the front of the exhaust, tighten all clamps and connections.

13. Carefully position the ABS line to provide clearance to the exhaust. **Refer to Figure 15.** Check along the whole length of the exhaust system to ensure that there is adequate clearance around the spare tire, fuel and brake lines or any wiring. If any interference is detected relocate or adjust.



Figure 15



Congratulations! You are ready to begin experiencing the improved power, sound and driving experience of your MBRP Inc. performance exhaust system. We hope you enjoy your purchase.