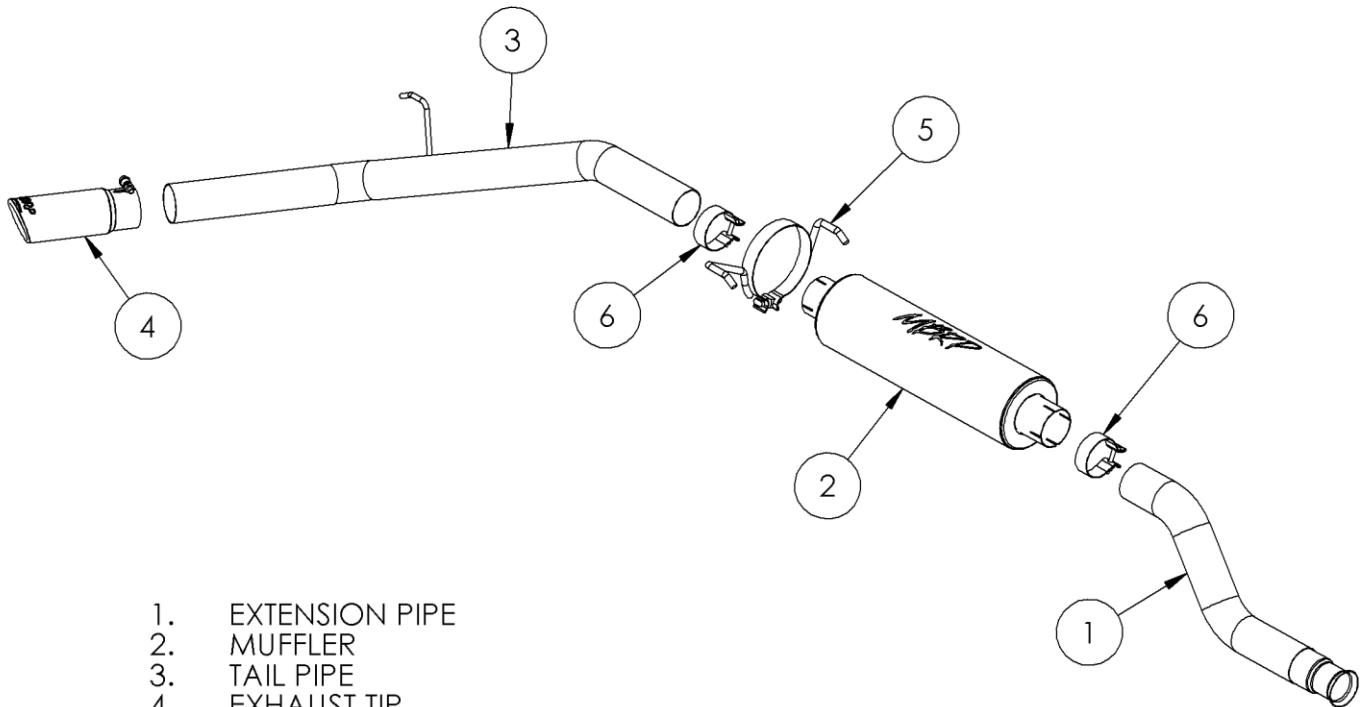


# S5330

2000-06 TOYOTA TUNDRA 4.7L  
RESONATOR BACK 3" SINGLE  
SIDE EXIT

**MBRP**  
INC.  
PERFORMANCE EXHAUST



1. EXTENSION PIPE
2. MUFFLER
3. TAIL PIPE
4. EXHAUST TIP
5. MUFFLER HANGER CLAMP
6. 3" CLAMP (2 PCS)

NOTE: ALUMINIZED SYSTEMS USE SADDLE CLAMPS

## PLEASE READ BEFORE STARTING INSTALLATION

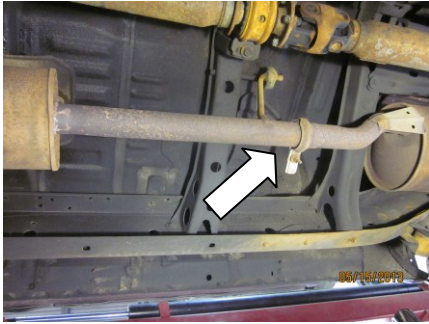
While MBRP Inc. has made every effort to ensure that all components of this system are of superior quality and properly packaged, it is the installer's responsibility to ensure the following before removal of the factory exhaust:

- that ALL components shown above are present.
- that ALL mating components fit together.
- that there are no damaged components.
- that the system you have purchased is appropriate for your vehicle year, model and configuration.
- that the system will not interfere with any modifications previously installed or planned.
- that you have read and understand these instructions.

If you have any questions or are uncertain about any aspect of the installation of this system to your vehicle please contact your dealer before commencing installation.

## 2000-06 Toyota Tundra 4.7L

### Removal of Stock System:

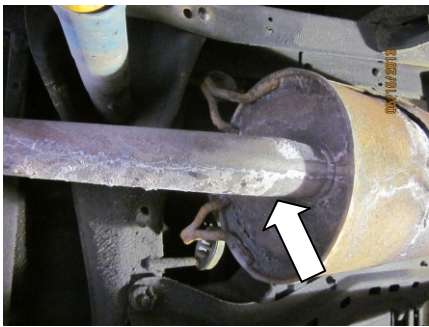


**Figure 1**

1. Apply a penetrating lubricant liberally to all exhaust fasteners, hangers and rubber insulators.

2. Remove the V-band clamp from the resonator pipe.

**Refer to Figure 1.**



**Figure 2**

3. Remove the factory exhaust from all three hangers and from the vehicle. Depending on the lift used to raise the vehicle, you may need to cut the tail pipe off of the muffler to remove the factory system.

**Refer to Figure 2.**

### Installation of MBRP Inc. Performance Exhaust:



**Figure 3**

1. Insert the **Extension Pipe** onto the factory resonator pipe. Loosely install the factory V-band clamp.

**Refer to Figure 3.**



**Figure 4**

2. Place a **3" Clamp** over the **Extension Pipe** outlet. Slip the **Muffler** inlet onto the rear of the **Extension Pipe**.

**Refer to Figure 4.**



**Figure 5**

3. Install the **Muffler Hanger Clamp** over the **Muffler** and into the factory rubber insulators. Place a **3" Clamp** over the **Muffler** outlet.  
**Refer to Figure 5.**



**Figure 6**

4. Insert the **Tail Pipe** over the rear axle and into the **Muffler** outlet.  
**Refer to Figure 6.**



**Figure 7**

5. Install the **Tail Pipe** hanger into the factory rubber insulator.  
**Refer to Figure 7.**

6. Install the **Exhaust Tip** onto the **Tail Pipe**.  
**Refer to Figure 7.**



**Figure 8**

7. Align the exhaust as required. Starting at the front of the exhaust, tighten all clamps, hangers and connections. Ensure each joint is secure. Do not over tighten the **Muffler Hanger Clamp**; it only needs to be tight enough to prevent it from rattling.

8. Check along the entire length of the exhaust system to ensure that there is adequate clearance between the exhaust system and heat shields, cross members, and body panels.

**Congratulations!** You are ready to begin experiencing the improved power, sound and driving experience of your **MBRP Inc.** performance exhaust system. We know you will enjoy your purchase.