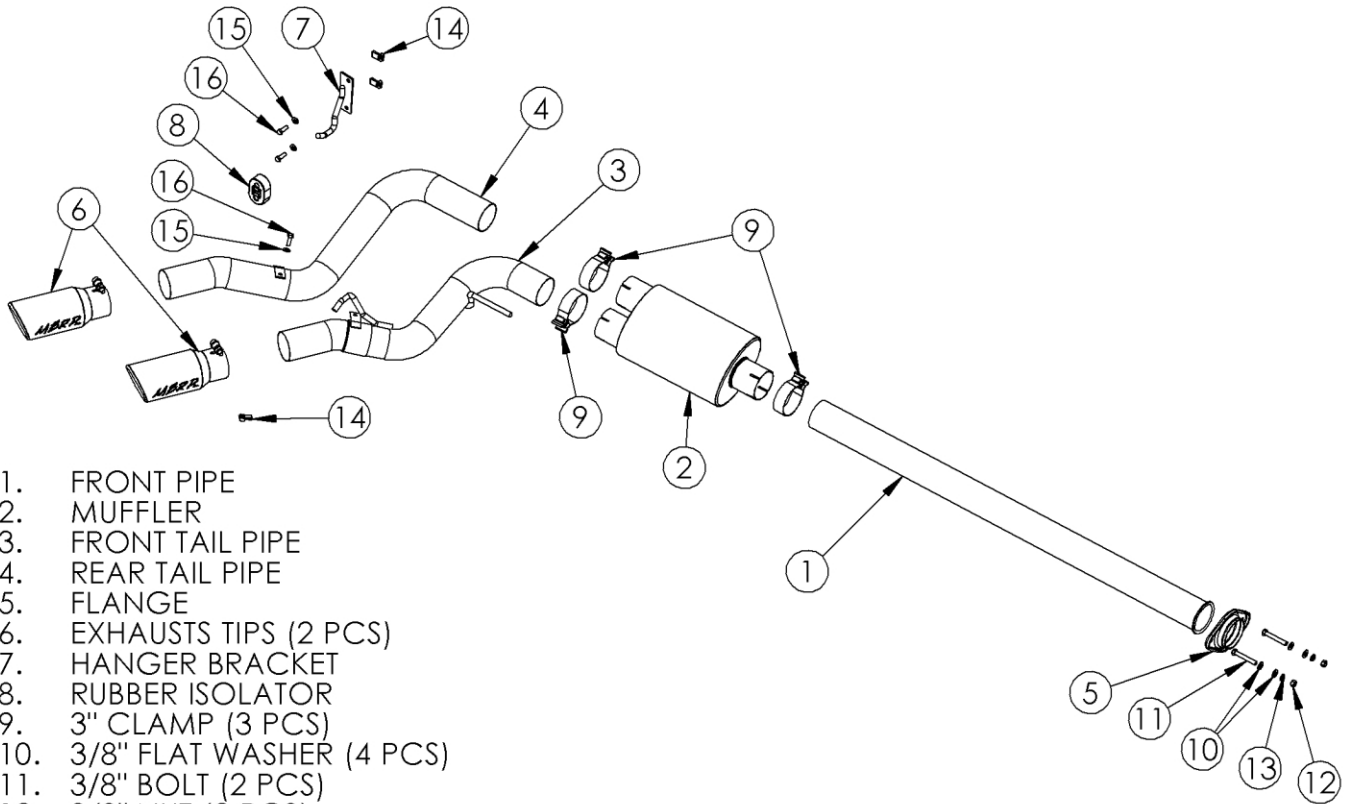


S5260

2015 F150 SINGLE-SIDE DUAL OUTLET IN
FRONT OF REAR WHEEL - ALL

MBRP
INC.
PERFORMANCE EXHAUST



1. FRONT PIPE
2. MUFFLER
3. FRONT TAIL PIPE
4. REAR TAIL PIPE
5. FLANGE
6. EXHAUSTS TIPS (2 PCS)
7. HANGER BRACKET
8. RUBBER ISOLATOR
9. 3" CLAMP (3 PCS)
10. 3/8" FLAT WASHER (4 PCS)
11. 3/8" BOLT (2 PCS)
12. 3/8" NUT (2 PCS)
13. 3/8" LOCK WASHER (2 PCS)
14. PANEL NUT (3 PCS)
15. 5/16" FLAT WASHER (3 PCS)
16. 5/16" BOLT (3 PCS)

NOTE: Aluminized and Black systems use saddle clamps

PLEASE READ BEFORE STARTING INSTALLATION

While MBRP Inc. has made every effort to ensure that all components of this system are of superior quality and properly packaged, it is the installer's responsibility to ensure the following before removal of the factory exhaust:

- that ALL components shown above are present.
- that ALL mating components fit together.
- that there are no damaged components.
- that the system you have purchased is appropriate for your vehicle year, model and configuration.
- that the system will not interfere with any modifications previously installed or planned.
- that you have read and understand these instructions.

If you have any questions or are uncertain about any aspect of the installation of this system to your vehicle please contact your dealer before commencing installation.

Removal of Stock System:



Figure 1



Figure 2



Figure 4



Figure 5



Figure 6

1. Apply a penetrating lubricant liberally to all hangers and rubber isolators.
2. Loosen the factory clamp in front of the muffler.
3. Loosen the factory extension pipe flange bolts.

Refer to Figure 1.

4. Rotate the factory extension pipe to release the factory muffler inlet locking boss.

Refer to Figure 2.

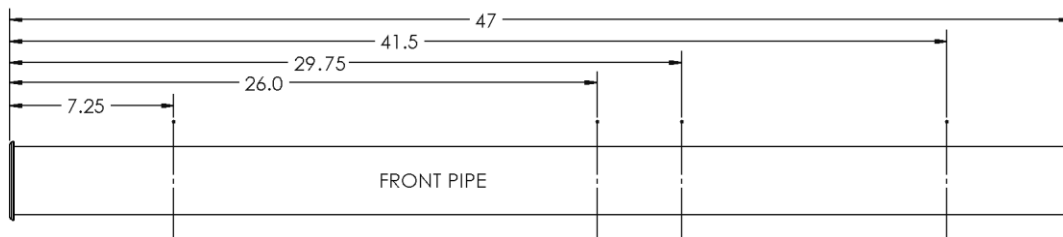
5. Remove the factory muffler assembly from the hangers and remove from the vehicle.

6. Remove the factory extension pipe bolts and remove the factory extension pipe from the vehicle.

Installation of MBRP Inc. Performance Exhaust:

1. Determine the overall length of the **Front Pipe** and cut to length.

Refer to Figure 3.



WHEELBASE	FRONT PIPE LENGTH
122" RC 6.5' BOX	7.25"
141" RC 8' BOX	26"
145" EC 6.5' BOX/ SC 5.5' BOX	29.75"
157" SC 6.5' BOX	41.5"
164" EC 8' BOX	47" (NO CUT)

Figure 3.

2. Loosely install the **Front Pipe** using the supplied **3/8" Hardware**.
- Refer to Figure 4.**

3. Install the **Hanger Bracket** onto the outside of the passenger-side frame, in front of the leaf spring eye, using two **Panel Nuts**, two **5/16" Flat Washers**, and two **5/16" Bolts**. A Super Crew model is shown.

Refer to Figures 5 and 6.



Figure 7

4. Using the **3" Clamp**, loosely install the **Muffler** onto the **Front Pipe** at approximately a 30 degree angle.

5. Install the **Rubber Isolator** onto the **Hanger Bracket** and **Front Tail Pipe**. Refer to **Figure 7**.

6. Using a **3" Clamp**, install the **Front Tail Pipe** into the **Muffler** and into the factory isolator.

Refer to **Figure 8 (EcoBoost)** or **Figure 9 (5.0L)**.



Figure 8

7. Using a **3" Clamp**, install the **Rear Tail Pipe** into the **Muffler**, keeping the mounting tab above the **Front Tail Pipe** mounting tab and attaching with the supplied **5/16" Bolt, Washer** and **Panel Nut**.

Refer to **Figure 10** and **Page 1**.

8. Install the Exhaust Tips and adjust to your liking.

Refer to **Figure 11**.



Figure 9

9. Align all the components to ensure the **Exhaust Tips** are level and parallel, and there is clearance around the body and frame. Once everything is aligned, completely tighten all **Clamps** and **Hardware**.

10. Check along the whole length of the exhaust system to ensure that there is adequate clearance around the frame, body, running boards, fuel and brake lines or any wiring. If any interference is detected, relocate or adjust.



Figure 10



Figure 11



Congratulations! You are ready to begin experiencing the improved power, sound and driving experience of your **MBRP Inc.** performance exhaust system. We know you will enjoy your purchase.