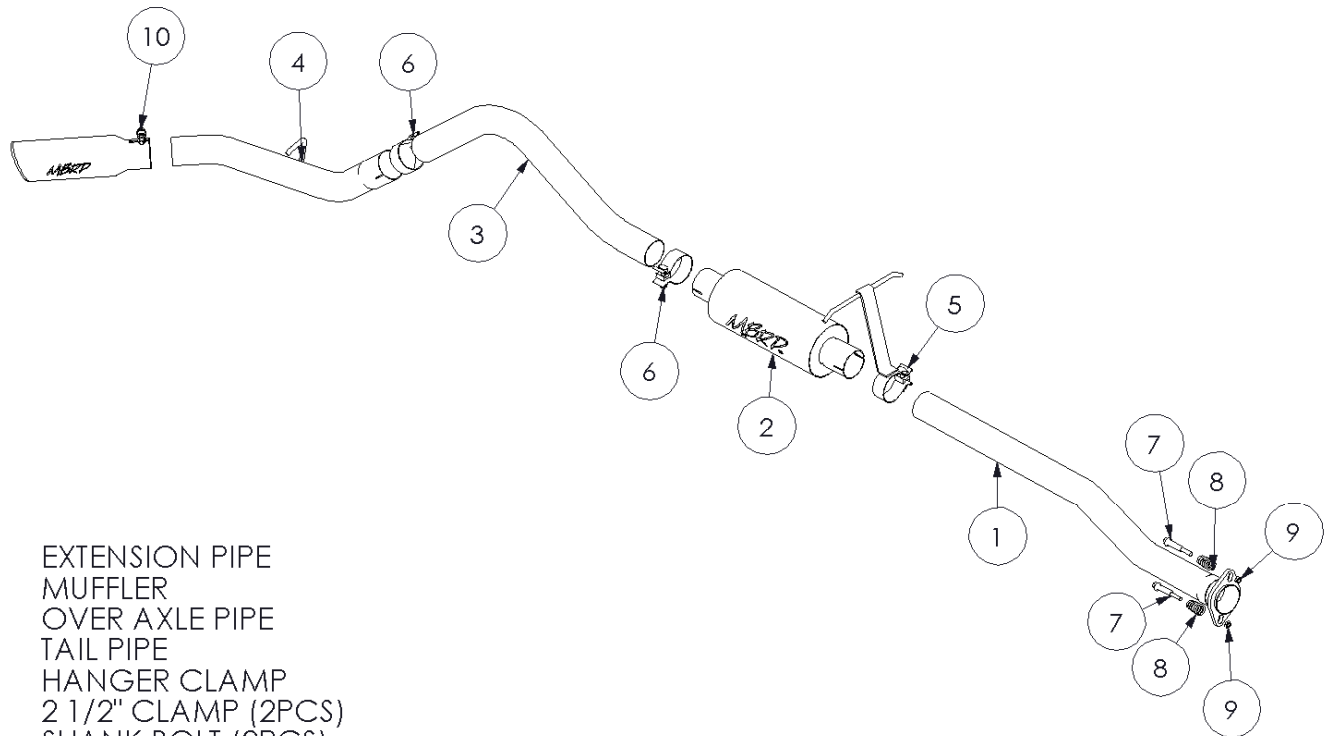


# S5226

1998-2011 FORD RANGER/ MAZDA B  
SERIES, RC/EC 6FT BED, CAT BACK,  
SINGLE SIDE



1. EXTENSION PIPE
2. MUFFLER
3. OVER AXLE PIPE
4. TAIL PIPE
5. HANGER CLAMP
6. 2 1/2" CLAMP (2PCS)
7. SHANK BOLT (2PCS)
8. SPRING (2PCS)
9. HEX NUT (2PCS)
10. EXHAUST TIP

NOTE: SADDLE CLAMPS USED IN ALUMIZED SYSTEM

## PLEASE READ BEFORE STARTING INSTALLATION

While MBRP Inc. has made every effort to ensure that all components of this system are of superior quality and properly packaged, it is the installer's responsibility to ensure the following before removal of the factory exhaust:

- that ALL components shown above are present.
- that ALL mating components fit together.
- that there are no damaged components.
- that the system you have purchased is appropriate for your vehicle year, model and configuration.
- that the system will not interfere with any modifications previously installed or planned.
- that you have read and understand these instructions.

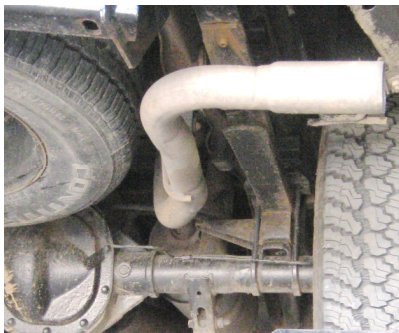
If you have any questions or are uncertain about any aspect of the installation of this system to your vehicle please contact your dealer before commencing installation.



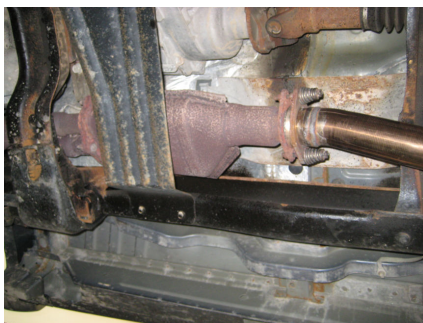
**Figure 1**



**Figure 2**



**Figure 3**



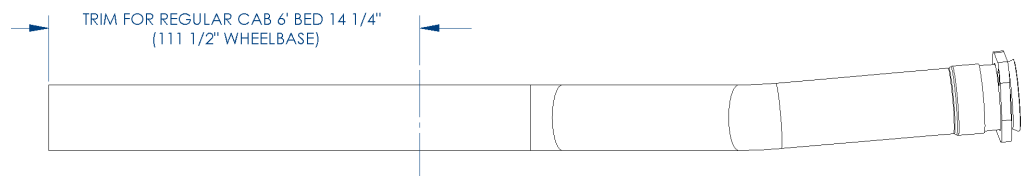
**Figure 4**

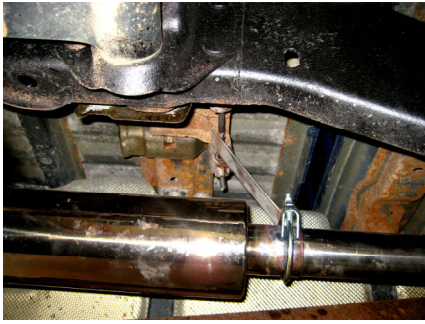
## **Removal of Stock System:**

1. Apply a penetrating lubricant liberally to all exhaust fasteners, hangers and rubber insulators.
2. Remove the bolts and springs holding the front flange together and disconnect the exhaust system. **Refer to Figure 1.**
3. Remove the hangers from the rubber insulators and remove the exhaust from the vehicle. **Refer to Figures 2 & 3.**

## **Installation of MBRP Inc. Performance Exhaust:**

1. Now loosely attach the **Extension Pipe** to the flange using the **Shank Bolts** and **Springs** provided. **Refer to Figure 4.**  
Note: The **Extension Pipe** will need to be trimmed on some models, refer to the illustration below.

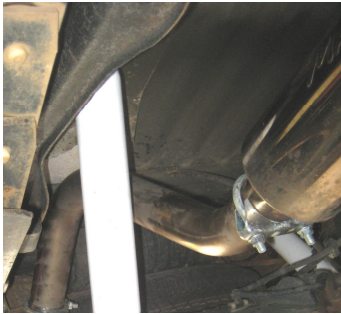




**Figure 5**

2. Install the **Muffler** onto the **Extension Pipe** using the **Hanger Clamp** provided. Then install the **Hanger Clamp** into the factory rubber insulator. Do not tighten the clamp at this time. **Refer to Figure 5.**

3. Loosely install the **Over Axle Pipe** connecting it to the **Muffler** outlet with a **2 ½” Clamp**. **Refer to Figure 6.**



**Figure 6**

4. Connect the expanded end of the **Tail Pipe** to the **Over Axle Pipe** with the remaining the **2 ½” Clamp**. Install the hanger into the factory rubber insulator. **Refer to Figure 7.**

5. Install and adjust the Exhaust Tip to suit. Using a 17mm wrench tighten the lock bolt located on the **Exhaust Tip**. **Refer to Figure 7.**



**Figure 7**

6. Make sure that the exhaust is properly in place before tightening clamps. Start at the front of the exhaust system and begin tightening all connections.



**Congratulations!** You are ready to begin experiencing the improved power, sound and driving excitement of your MBRP Inc. performance exhaust system. We know you will enjoy your purchase.