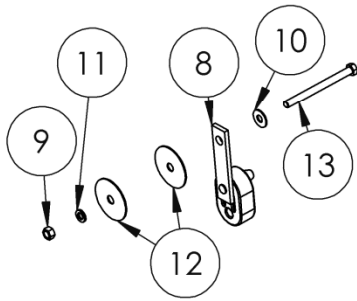


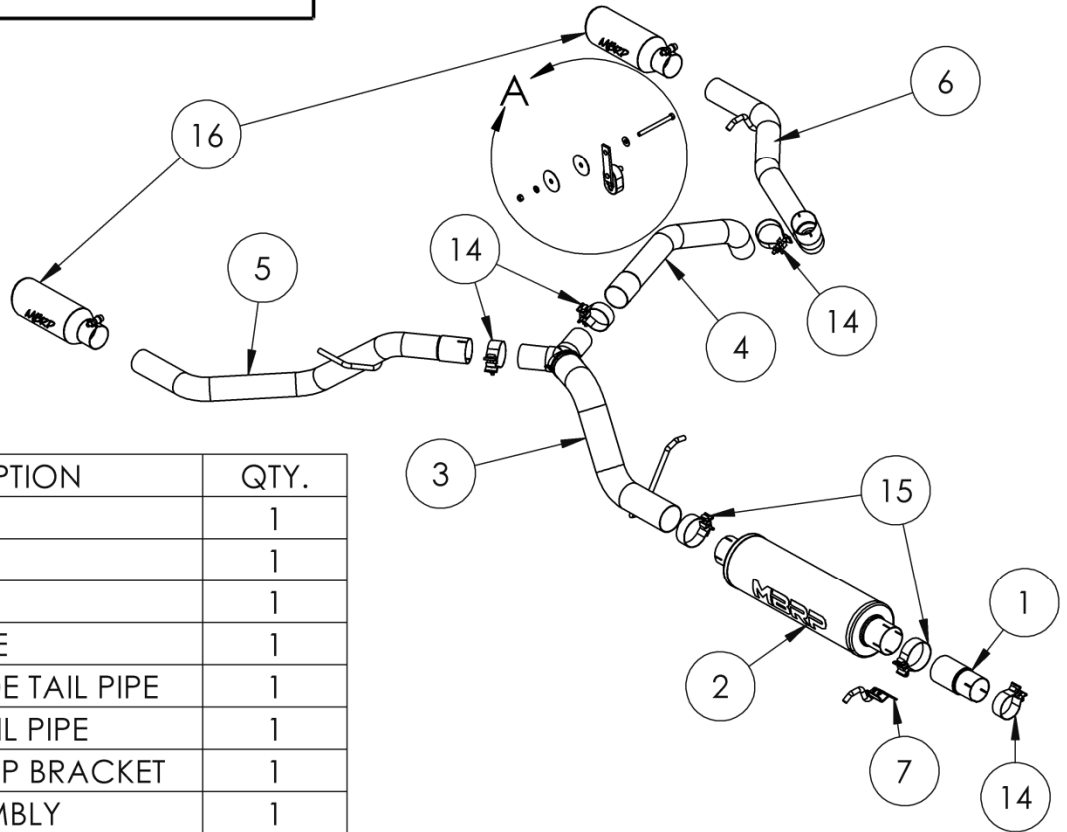
# S5223

2019-UP FORD RANGER 2.3L ECOBOOST,  
DUAL SPLIT REAR

# MBRP



DETAIL A



ITEM	DESCRIPTION	QTY.
1	ADAPTOR PIPE	1
2	MUFFLER	1
3	Y-PIPE	1
4	OVER-AXLE PIPE	1
5	PASSENGER-SIDE TAIL PIPE	1
6	DRIVER-SIDE TAIL PIPE	1
7	HANGER CLAMP BRACKET	1
8	HANGER ASSEMBLY	1
9	3/8" HEX NUT	1
10	3/8" FLAT WASHER	1
11	3/8" LOCK WASHER	1
12	7/16" FENDER WASHER	2
13	3/8" X 4.5" HEX BOLT	1
14	2.5" CLAMP	4
15	3.0" CLAMP	2
16	TIP	2

## PLEASE READ BEFORE STARTING INSTALLATION

While MBRP has made every effort to ensure that all components of this system are of superior quality and properly packaged, it is the installer's responsibility to ensure the following before removal of the factory exhaust:

- that ALL components shown above are present.
- that ALL mating components fit together.
- that there are no damaged components.
- that the system you have purchased is appropriate for your vehicle year, model and configuration.
- that the system will not interfere with any modifications previously installed or planned.
- that you have read and understand these instructions.

If you have any questions or are uncertain about any aspect of the installation of this system to your vehicle please contact your dealer before commencing installation.

# MBRP



Figure 1



Figure 2



Figure 3



Figure 4



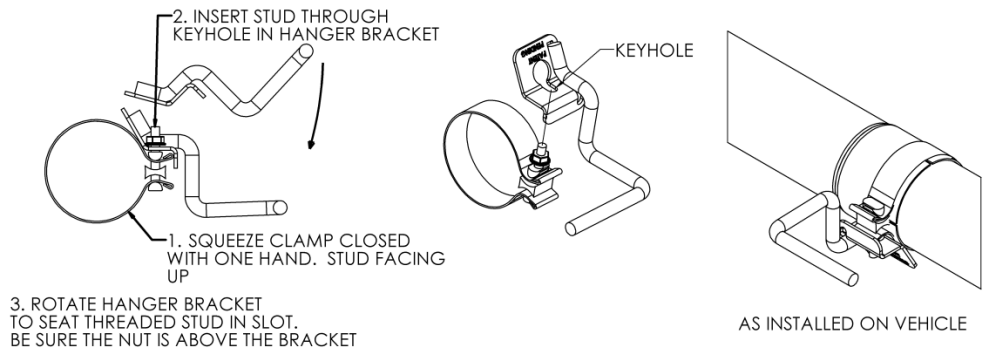
Figure 5

## Removal of Stock System

1. Apply penetrating lubricant liberally to all exhaust fasteners, hangers and rubber insulators.
2. Support the front pipe and loosen the clamp in front of the muffler. Refer to Figure 1.
3. Unbolt the factory tail pipe insulator from the frame. Refer to Figure 2.
4. Remove the remaining two hangers from the factory rubber insulators and remove the muffler and tail pipe assembly from the vehicle.

## Installation of MBRP Performance Exhaust

1. Using a **2.5" Clamp**, install the **Adaptor Pipe**. Do not fully tighten until all parts are installed. Take care that the boss on the factory pipe goes into the notch of the **Adaptor Pipe**. The **2.5" Clamp** is a tight fit. Refer to Figure 3.
2. Install the **Hanger Clamp Bracket** onto a **3.0" Band Clamp** using the procedure shown below. (Hanger bracket not exactly as shown)



3. Place the previously assembled **3.0" Band Clamp** and **Hanger Clamp Bracket** onto the **Muffler**. Install the **Muffler** onto the **Adaptor Pipe** and place the **Hanger Clamp Bracket** into the factory isolator. When tightening, pull down on the isolator end of the **Hanger Clamp Bracket** to ensure the isolator is taking some weight. Refer to Figure 4.
4. Using a **3.0" Clamp**, loosely install the **Y-Pipe** into the **Muffler** and into the factory isolator. Refer to Figure 5.

# MBRP



Figure 6



Figure 7



Figure 8



Figure 9



Figure 10

5. Using a **2.5" Clamp**, loosely install the **Passenger-Side Tail Pipe** and re-install the factory tail pipe insulator to the frame.

Refer to **Figure 6**.

6. Using a **2.5" Clamp**, loosely install the **Over-Axle Pipe** onto the **Y-Pipe**.

Refer to **Figure 7**.

7. Using the supplied **Hardware**, attach the **Hanger Assembly** to the outside of the driver-side frame rail. The **Hanger Assembly** can be adjusted up and down to fine-tune **Tip** alignment.

Refer to **Figures 8 (outside), 9 (inside) and the first page exploded view**.

8. Using a **2.5" Band Clamp**, loosely install the **Driver-Side Tail Pipe** onto the **Over-Axle Pipe** and into the **Hanger Assembly**.

Refer to **Figure 10**.

9. Loosely install the exhaust **Tips** and carefully adjust and align the pipes to provide equal spacing of the tips. The **Tips** can be adjusted to your liking.

10. Tighten all hardware and clamps, starting at the front and working rearward to secure the system. Check along the full length of the exhaust system to ensure there is adequate clearance for fuel lines, vent lines, brake lines, frame, bodywork, suspension and any wiring, etc. If there is any interference detected, relocate or adjust to provide adequate clearance. Ensure all clamp connections are secure and components are unable to rotate or slide. Band clamps require approximately 45 lb-ft (60 N-m) of torque. Verify clearances, system security and band clamp torque after 30-60 miles (50-100 km) of driving.



**Congratulations!** You are ready to begin experiencing the improved power, sound and driving experience of your **MBRP Performance Exhaust**. We know you will enjoy your purchase!