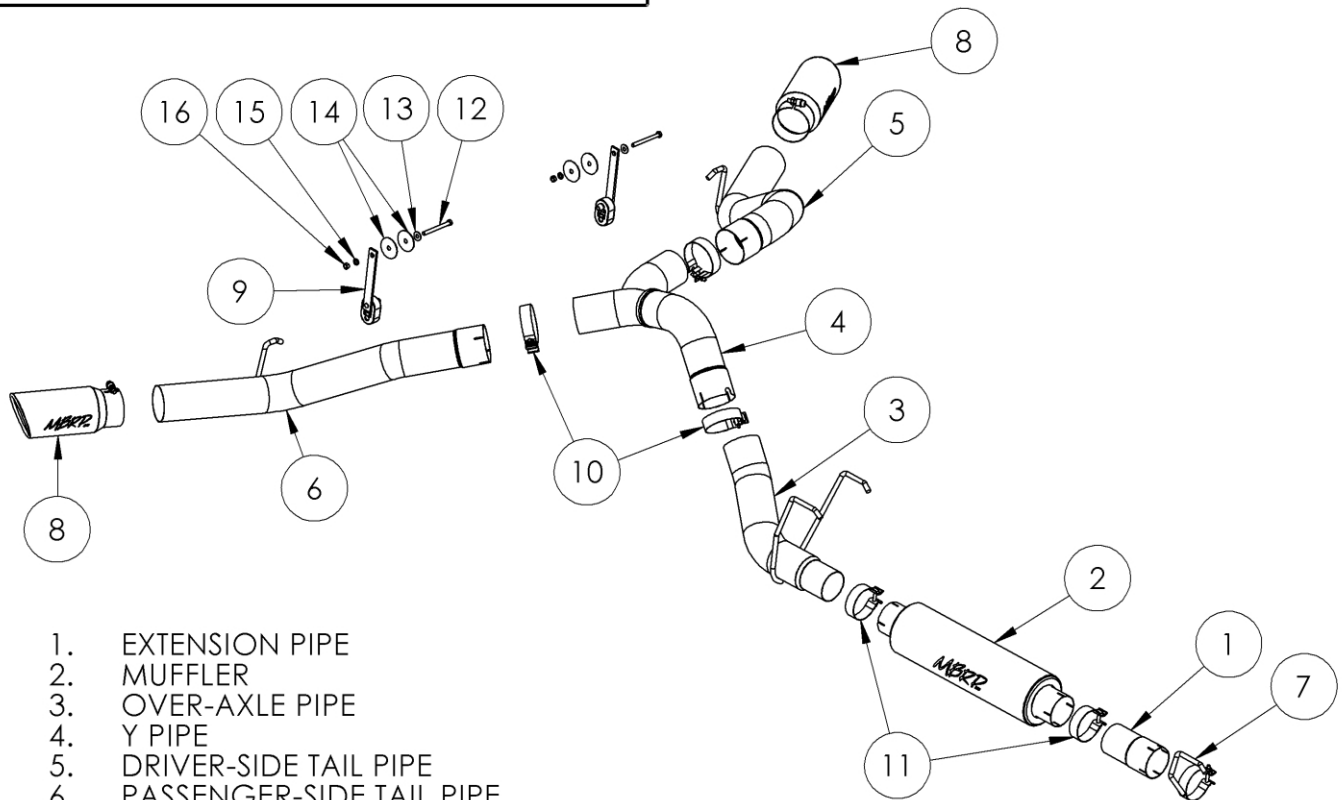


S5151

2014-15 RAM 2500 6.4L CAT
BACK 4" DUAL SIDE SPLIT

MBRP
INC.
PERFORMANCE EXHAUST



1. EXTENSION PIPE
2. MUFFLER
3. OVER-AXLE PIPE
4. Y PIPE
5. DRIVER-SIDE TAIL PIPE
6. PASSENGER-SIDE TAIL PIPE
7. HANGER CLAMP
8. EXHAUST TIP (2 PCS)
9. HANGER ASSEMBLY (2 PCS)
10. 4" CLAMP (3 PCS)
11. 3.5" CLAMP (2 PCS)
12. 3/8 X 4" BOLT (2 PCS)
13. 3/8" FLAT WASHER (2 PCS)
14. 7/16" FENDER WASHER (4 PCS)
15. 3/8" LOCK WASHER (2 PCS)
16. 3/8" NUT (2 PCS)

PLEASE READ BEFORE STARTING INSTALLATION

While MBRP Inc. has made every effort to ensure that all components of this system are of superior quality and properly packaged, it is the installer's responsibility to ensure the following before removal of the factory exhaust:

- that ALL components shown above are present.
- that ALL mating components fit together.
- that there are no damaged components.
- that the system you have purchased is appropriate for your vehicle year, model and configuration.
- that the system will not interfere with any modifications previously installed or planned.
- that you have read and understand these instructions.

If you have any questions or are uncertain about any aspect of the installation of this system to your vehicle please contact your dealer before commencing installation.

Removal of Stock System:



Figure 1



Figure 2



Figure 3



Figure 4

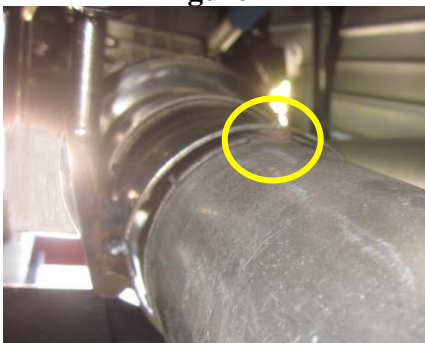


Figure 5

1. Apply a penetrating lubricant liberally to all exhaust fasteners, hangers and rubber insulators.

2. Loosen the nut on the clamp on the factory tailpipe.

Refer to Figure 1.

3. Remove the tail pipe from the OEM muffler then from the OEM rubber hanger. Remove the stock tail pipe from the vehicle. Completely remove the OEM rubber tail pipe hanger as it will not be reused.

4. Loosen the nut on the clamp on the OEM muffler. Remove the ground strap from the passenger side muffler hanger and remove the muffler.

Refer to Figure 2.

5. Temporarily lower the spare tire.

Installation of MBRP Inc. Performance Exhaust:

1. Remove the 2 rear bolts retaining the spare tire heat shield.

Refer to Figure 3.

2. Install the **Hanger Assemblies**, centered in the frame holes, using the provided hardware, keeping the **7/16" Fender Washers** next to the frame. Do not completely tighten until all of the pipes are in place. This allows for final adjustment of the **Tail Pipes**.

Refer to Figures 3 (passenger side) and 4 (driver side).

3. Slide the **Hanger Clamp** onto the outlet end of the factory extension pipe. Install the **Extension Pipe** as shown, over the factory extension pipe and into the **Hanger Clamp**, taking care to align the tab on the factory extension pipe with the slot in the **Extension Pipe**.

Refer to Figure 5.

4. Using one **3.5" Clamp** install the **Muffler** onto the **Extension Pipe**.



Figure 6

5. Place one **3.5" Clamp** onto the **Muffler** and insert the **Over Axle Pipe** into the **Muffler** and into the factory rubber insulators.
Refer to Figure 6.



Figure 7

6. Slide one **4" Clamp** and the **Y Pipe** onto the **Over Axle Pipe**.
Refer to Figure 7.



Figure 8

7. Slide one **4" Clamp** and the **Driver Side Tail Pipe** onto the left hand outlet of the **Y Pipe** keeping the brake flex hoses and ABS wiring in front of the pipe.
Refer to Figure 8.



Figure 9

8. Install the **Driver Side Tail Pipe** hanger into the **Hanger Assembly**.
Refer to Figure 9.



Figure 10

9. Install the Passenger Side Tail Pipe using a **4" Clamp** onto the right hand outlet of the **Y Pipe** and into the **Hanger Assembly**.
Refer to Figure 10.



Figure 9

10. Align the exhaust and tighten the **Hanger Assembly** hardware on both sides.

11. Reinstall the spare tire heat shield and raise the spare tire keeping it as far to the right rear of the vehicle as possible.

12. Reinstall the ground strap to the passenger side hanger.
Refer to Figure 9.

13. Align the exhaust as required. Starting at the front of the exhaust, tighten all clamps, hangers and connections.



Figure 10

14. Install the **Exhaust Tips**. Single rear wheel owners may wish to trim the length of the tail pipes to suit. The Tail Pipes are purposely left long for dual rear wheel applications.
Refer to Figure 10.

15. Check along the whole length of the exhaust system to ensure that there is adequate clearance around the spare tire, fuel and brake lines or any wiring. It is necessary to relocate the axle vent hose. If any interference is detected relocate or adjust. Pay particular attention to the brake flex lines and ABS wiring on the driver's side. Most often these can be kept clear of the exhaust by loosely tying them back to the emergency brake cable. Different configurations may require different methods.

It is the installer's responsibility to ensure there is enough clearance to prevent damage.



Congratulations! You are ready to begin experiencing the improved power, sound and driving experience of your **MBRP Inc.** performance exhaust system. We know you will enjoy your purchase.