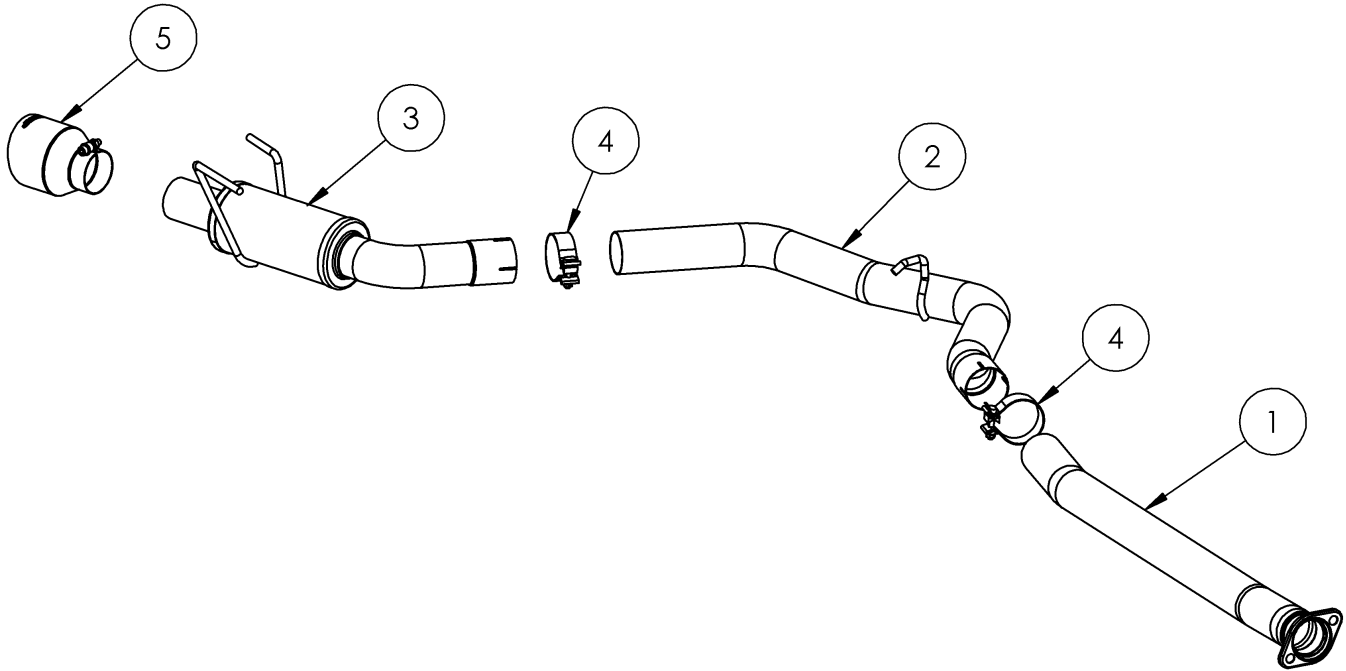


# S4803

2015-2021 SUBARU IMPREZA WRX/WRX STI,  
2.0L/2.5L,  
2011-2014 SUBARU IMPREZA WRX / WRX STI SEDAN,  
2.0L / 2.5L,  
CAT-BACK, 3.0" SINGLE REAR EXIT

# MBRP®



ITEM	DESCRIPTION	QTY
1	FRONT PIPE	1
2	MID-PIPE	1
3	TAIL PIPE	1
4	3.0" CLAMP	2
5	TIP	1

## PLEASE READ BEFORE STARTING INSTALLATION

While MBRP has made every effort to ensure that all components of this system are of superior quality and properly packaged, it is the installer's responsibility to ensure the following before removal of the factory exhaust:

- that ALL components shown above are present.
- that ALL mating components fit together.
- that there are no damaged components.
- that the system you have purchased is appropriate for your vehicle year, model and configuration.
- that the system will not interfere with any modifications previously installed or planned.
- that you have read and understand these instructions.

If you have any questions or are uncertain about any aspect of the installation of this system to your vehicle please contact your dealer before commencing installation.

# MBRP

## Removal of Stock System



Figure 1

1. Apply penetrating lubricant liberally to all exhaust fasteners, hangers and rubber insulators.

2. Remove the nuts and bolts from the rear muffler flanges.

3. Remove muffler hangers from the rubber insulators and remove the mufflers from the vehicle.

Refer to Figure 1.

4. Remove the factory nuts, bolts and springs from the front flange behind the catalytic converter. Retain the hardware for the installation. Remove the factory front pipe from the rubber insulator and from the vehicle.

Refer to Figure 2.

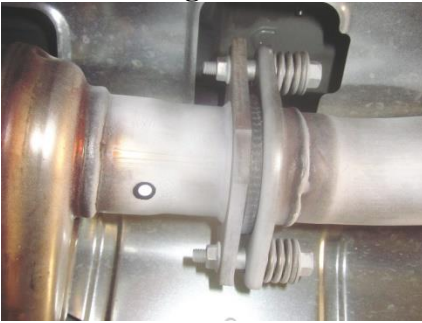


Figure 2

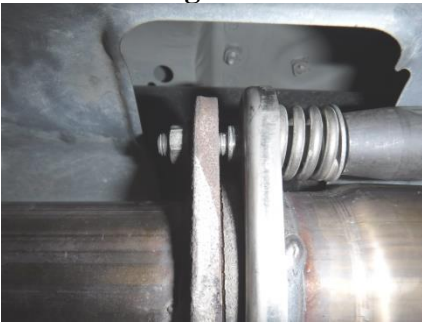


Figure 3

## Installation of MBRP Performance Exhaust

1. Using the factory hardware, install the **Front Pipe**. Do not fully tighten until all parts are installed. Take care that the shoulder of the factory bolt goes through the hole of the new flange.

Refer to Figure 3.

2. Using the **3.0" Clamp**, loosely install the **Mid-Pipe** onto the **Front Pipe** and install hanger into the factory rubber insulator.

Refer to Figure 4.

3. Using a **3.0" Clamp**, loosely install the **Tail Pipe** onto the **Mid-Pipe** and hangers into the factory insulators. It may be easier to remove the insulators from the vehicle, install them on the **Tail Pipe**, then back onto the vehicle.

Refer to Figure 5.

4. Install and adjust the **Exhaust Tip** to suit.

Refer to Figure 6.



Figure 4



Figure 5

# MBRP



**Figure 6**

5. Align the edge of each band clamp with the edge of the joint it is connecting. Tighten all hardware and clamps, starting at the front and working rearward to secure the system. Check along the full length of the exhaust system to ensure there is adequate clearance for fuel lines, vent lines, brake lines, frame, bodywork, suspension, and any wiring, etc. If there is any interference detected, relocate, or adjust to provide adequate clearance. Ensure all clamp connections are secure and components are unable to rotate or slide. Band clamps require approximately 45 lb-ft (60 N-m) of torque. Verify clearances, system security and band clamp torque after 30-60 miles (50-100 km) of driving.



**Congratulations!** You are ready to begin experiencing the improved power, sound and driving experience of your **MBRP** Performance Exhaust. We know you will enjoy your purchase!