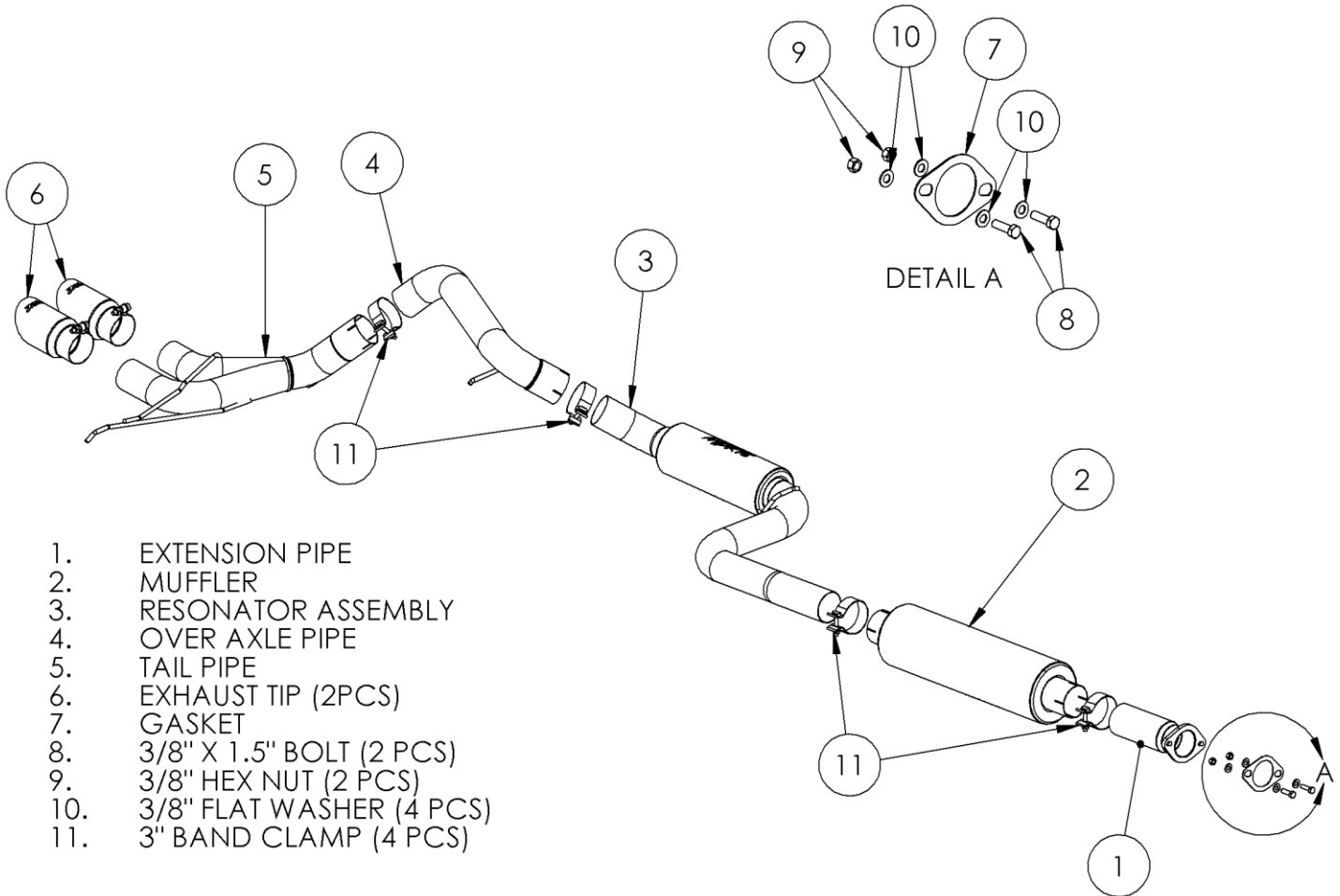


# S4200

2013-14 FORD FOCUS ST DUAL  
CENTER OUTLET

**MBRP**  
INC.  
PERFORMANCE EXHAUST



## PLEASE READ BEFORE STARTING INSTALLATION

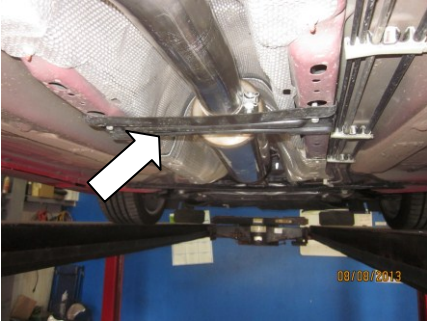
While MBRP Inc. has made every effort to ensure that all components of this system are of superior quality and properly packaged, it is the installer's responsibility to ensure the following before removal of the factory exhaust:

- that ALL components shown above are present.
- that ALL mating components fit together.
- that there are no damaged components.
- that the system you have purchased is appropriate for your vehicle year, model and configuration.
- that the system will not interfere with any modifications previously installed or planned.
- that you have read and understand these instructions.

If you have any questions or are uncertain about any aspect of the installation of this system to your vehicle please contact your dealer before commencing installation.

## 2013-14 Ford Focus ST

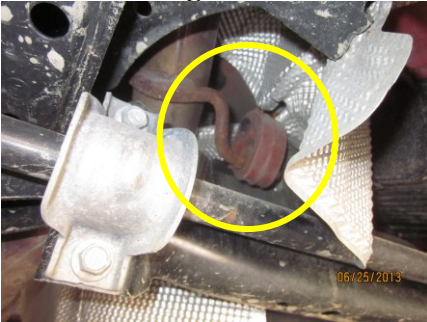
### Removal of Stock System:



**Figure 1**



**Figure 2**



**Figure 3**



**Figure 4**



**Figure 5**

1. Apply a penetrating lubricant liberally to all exhaust fasteners, hangers and rubber insulators.

2. Remove the small cross member.

**Refer to Figure 1.**

3. Carefully cut the factory exhaust in front of the rear suspension and after the factory weld.

**Refer to Figure 2.**

4. Remove the factory muffler assembly from all three hangers and from the vehicle. There is a hanger above the rear suspension that is difficult to access.

**Refer to Figure 3.**

5. Remove the two nuts from the factory front resonator assembly.

6. Remove the last hanger from the factory isolator and remove the exhaust from the vehicle.

### Installation of MBRP Inc. Performance Exhaust:

1. Insert the **Over Axle Pipe** from the rear of the vehicle over the rear suspension cross member. It may be necessary to temporarily bend the heat shields out of the way to clear the **Over Axle Pipe** hanger. Insert the **Over Axle Pipe** hanger into the factory rubber isolator.

**Refer to Figures 4 and 5.**



**Figure 6**

2. Place a **3” Band Clamp** over the **Tail Pipe** inlet. Slip the **Tail Pipe** inlet onto the rear of the **Over Axle Pipe**. Install the hangers into the factory isolators. **Do not tighten ANY clamps** until all parts are in place and aligned. **Refer to Figure 6.**



**Figure 7**

3. Install the Extension Pipe, Gasket, and Hardware onto the factory down pipe. The **Extension Pipe** has an angle built into it. Ensure that the pipe is angled towards the passenger side of the vehicle. Place a **3” Band Clamp** over the **Extension Pipe**. **Refer to Figure 7.**



**Figure 8**

4. Install the **Muffler** onto the **Extension Pipe**. Place a **3” Band Clamp** over the **Muffler** outlet. It is necessary to support the **Muffler**. **Refer to Figure 8.**



**Figure 9**

5. Install the **Resonator Assembly** into the **Muffler**. Place a **3” Band Clamp** on the **Resonator Assembly** outlet and install into the **Over Axle Pipe**. Ensure the **3” Band Clamp** is located so it clears the heat shields and is accessible to be tightened. **Refer to Figure 9.**





**Figure 10**

6. Install the **Exhaust Tips** onto the **Tail Pipe**. Ensure that the **Tail Pipe** is level and the **Exhaust Tips** are centred in the fascia opening.  
**Refer to Figure 10.**

7. Re-install the small cross member.

8. Align the exhaust as required. Pay particular attention to the location of the **Exhaust Tips** and the **Over Axle Pipe**. Starting at the front of the exhaust, tighten all clamps, hangers and connections. Ensure each joint is secure.

9. Check along the entire length of the exhaust system to ensure that there is adequate clearance between the exhaust system and heat shields, cross members, and body panels.



**Congratulations!** You are ready to begin experiencing the improved power, sound and driving experience of your **MBRP Inc.** performance exhaust system. We know you will enjoy your purchase.