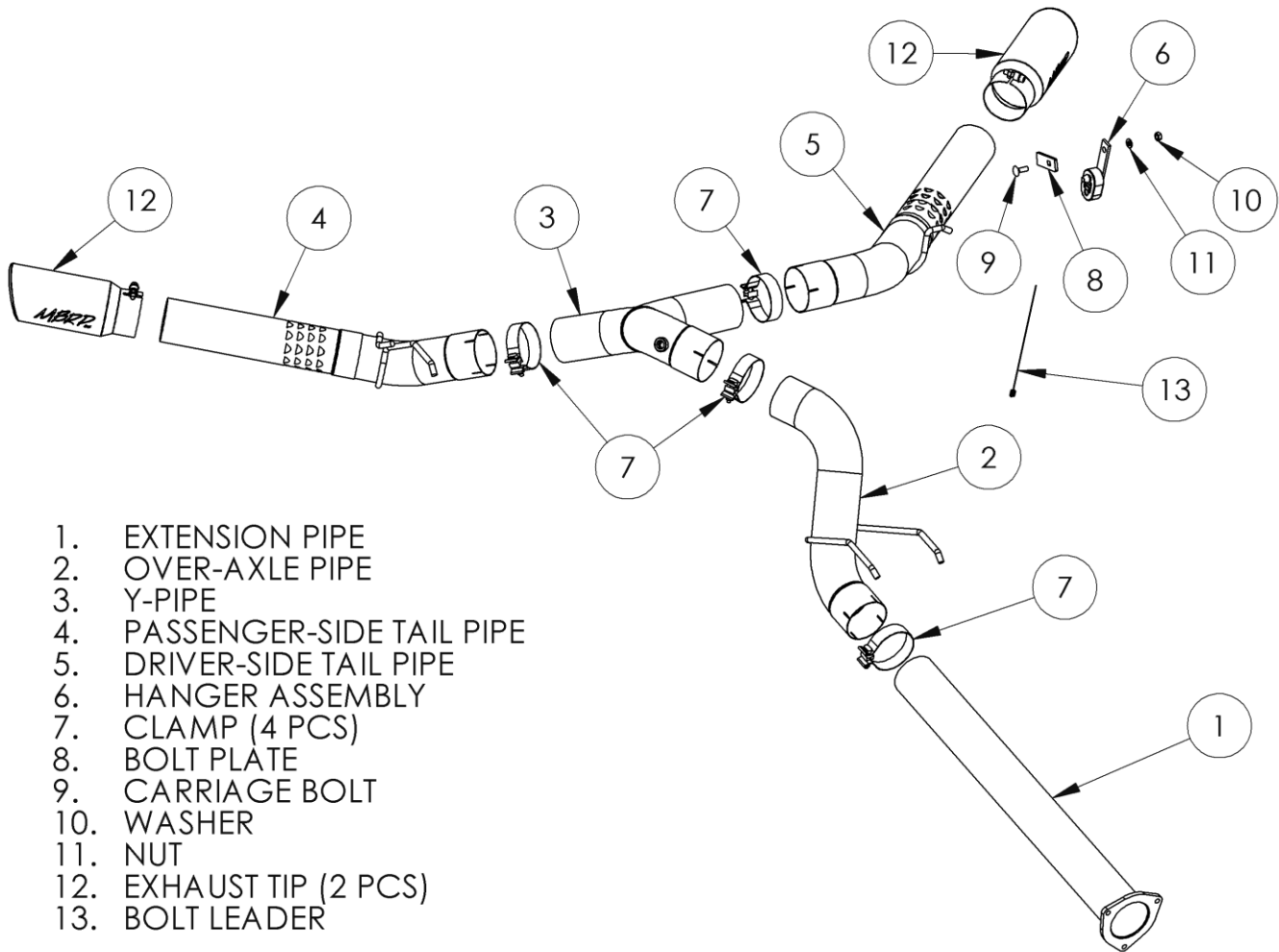


S6291

2017 - UP F250/350/450 6.7L DPF BACK
COOL DUALS

MBRP
INC.
PERFORMANCE EXHAUST



1. EXTENSION PIPE
2. OVER-AXLE PIPE
3. Y-PIPE
4. PASSENGER-SIDE TAIL PIPE
5. DRIVER-SIDE TAIL PIPE
6. HANGER ASSEMBLY
7. CLAMP (4 PCS)
8. BOLT PLATE
9. CARRIAGE BOLT
10. WASHER
11. NUT
12. EXHAUST TIP (2 PCS)
13. BOLT LEADER

PLEASE READ BEFORE STARTING INSTALLATION

While MBRP Inc. has made every effort to ensure that all components of this system are of superior quality and properly packaged, it is the installer's responsibility to ensure the following before removal of the factory exhaust:

- that ALL components shown above are present.
- that ALL mating components fit together.
- that there are no damaged components.
- that the system you have purchased is appropriate for your vehicle year, model and configuration.
- that the system will not interfere with any modifications previously installed or planned.
- that you have read and understand these instructions.

If you have any questions or are uncertain about any aspect of the installation of this system to your vehicle please contact your dealer before commencing installation.

Removal of Stock System:



Figure 1

1. Apply a penetrating lubricant liberally to all exhaust fasteners, hangers and rubber isolators.

2. Remove the EGT from the factory tail pipe.
Refer to Figure 1.

3. Remove the 3 nuts retaining the factory tail pipe.
Refer to Figure 2.

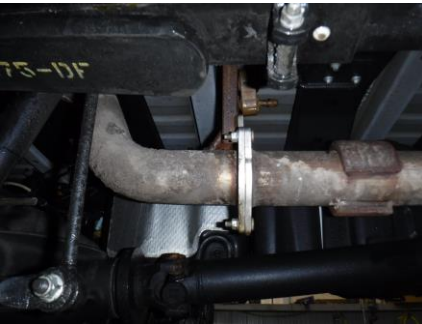


Figure 2

4. Remove the two front rubber isolators with the tail pipe.
Refer to Figure 3.

5. Remove the 3 nuts retaining the factory extension pipe assembly and remove the factory extension pipe. Keep the nuts and the gasket for the installation.

Installation of MBRP Inc. Performance Exhaust:

NOTE: Do not fully tighten any clamps until the entire system is properly aligned.

1. Determine the **Extension Pipe** length required for your vehicle and cut to length.

Refer to Figure 4 below.



Figure 3

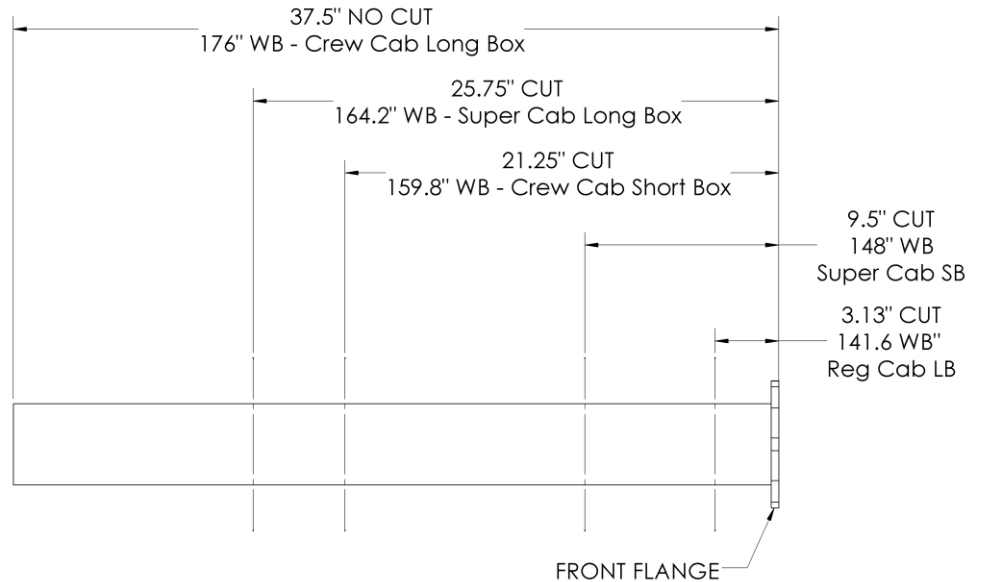


Figure 4



Figure 5

2. Loosely install the **Extension Pipe** onto the DPF using the original gasket and nuts.

Refer to Figure 5.



Figure 6

3. Replace the factory rubber isolators onto the truck in the original position. Using a **Clamp** install the **Over-Axle Pipe** onto the **Extension Pipe** and into the rubber isolators.
Refer to Figure 6.



Figure 7

4. Place a **Clamp** onto the **Y- Pipe** inlet and install the **Y-Pipe** onto the **Over-Axle Pipe**.
Refer to Figure 7.



Figure 8

5. Using a **Clamp** loosely install the **Passenger-Side Tail Pipe** onto the **Y-Pipe** and into the factory isolator.
Refer to Figure 8.



Figure 9

6. Thread the **Bolt Leader** onto the **Carriage Bolt**, and through the **Bolt Plate**.
Refer to Figure 9.



Figure 10

7. Place the **Carriage Bolt** and **Bolt Plate** into the oblong hole on the outside of the driver-side frame while holding onto the loose end of the **Bolt Leader**.
Refer to Figure 10.



Figure 11



Figure 12



Figure 13



Figure 14



Figure 15

8. Pulling carefully on the **Bolt Leader** draw the **Carriage Bolt** through the **Bolt Plate** and through the hole in the frame. While holding the **Carriage Bolt** in place, remove the **Bolt Leader** and install the **Hanger Assembly** using the supplied **Nut** and **Washer**.
Refer to Figure 11.

9. Using a **Clamp** loosely install the **Driver-Side Tail Pipe** onto the **Y-Pipe** and into the **Hanger Assembly**.
Refer to Figure 12.

10. Install the factory EGT sensor into the **Y-Pipe**.
Refer to Figure 13.

11. Install the **Exhaust Tips** and adjust to your liking.
Refer to Figures 14 and 15.

12. Once everything is aligned, completely tighten all **Clamps** and hardware starting from the front and working your way back.

13. Check along the whole length of the exhaust system to ensure that there is adequate clearance around the spare tire, fuel and brake lines or any wiring. If any interference is detected relocate or adjust. Pay particular attention to the brake flex lines and ABS wiring on the driver's side. Most often these can be kept clear of the exhaust by loosely tying them back to the emergency brake cable. Different configurations may require different methods. **It is the installer's responsibility to ensure there is enough clearance to prevent damage.**



Congratulations! You are ready to begin experiencing the improved power, sound and driving experience of your **MBRP Inc.** performance exhaust system. We know you will enjoy your purchase.