

TWG  **WHEEL-1**



**20
23**

THE WHEEL GROUP

Established in 1969, The Wheel Group (TWG) is a leading manufacturer and distributor with over 45 years of experience specializing in aftermarket automotive wheels, bumpers and accessories. With our specialized teams of engineers and product developers, TWG is committed to crafting innovative top-tier products for the ever-evolving enthusiast market. Headquartered in Ontario, California, TWG boasts a network of 18 distribution facilities located in throughout the US and Canada. Internationally, TWG handles an established customer base in over forty countries including Canada, Korea, Japan, Indonesia, and Australia.

TWG proudly distributes sixteen proprietary brands, including nine wheel brands, six accessory brands and our own tire brand.

MAYHEM
WHEELS

AMERICAN
TRUCKS

MAZZI

AMP
Tires

DIRTY
LIFE

RIDLER

KRAZE
WHEELS

BRX
BODY ARMOR

CALI
OFF-ROAD

TUFFEN

SON
WHEELS

TUFF STUFF
OVERLAND

MAX
SENSOR

RHI
AUTOMOTIVE

Mr. Lugnut

METALLUGZ
METALLUGZ.COM



DIRTY LIFE RACE WHEELS | 9314 CANYON RACE BEADLOCKS | MACHINED
KEVIN STEARNS | ULTRA 4 RACING | 4400 CLASS

20
23



BODY ARMOR 4x4 | 270 AWNING DRIVER SIDE



CONTENTS

WHEELS

- 08** MAYHEM
- 30** DIRTY LIFE RACE WHEELS
- 46** CALI OFF-ROAD
- 56** AMERICAN TRUXX
- 66** ION
- 76** RIDLER
- 84** TOUREN
- 96** MAZZI
- 102** KRAZE

TIRES

- 110** AMP TIRES

VEHICLE ACCESSORIES

- 118** BODY ARMOR 4X4
- 124** TUFF STUFF OVERLAND

WHEEL ACCESSORIES

- 128** RHI AUTOMOTIVE
- 130** MR LUGNUT
- 131** METAL LUGZ

TPMS

- 132** MAX SENSOR

20
23

MAYHEM

W H E E L S

Mayhem Wheels was founded with the goal of providing unique styling, precision, and quality with solid functionality. Targeted for trucks, SUV, CUV and Jeep fitments, we offer a variety of sizes for a custom look that's unmistakable. We are dedicated to creating the perfect set of wheels for your vehicle, and we stand behind our products 100%.

8305 COMPASS

AVAILABLE IN:
SATIN BLACK
GLOSS GRAPHITE





8305 COMPASS | SATIN BLACK

20
23

MAYHEM
W H E E L S

MAYHEMWHEELS.COM / @MAYHEMWHEELS



8300 PRODIGY

FINISH | MATTE BLACK W/ DARK TINT
MATTE BLACK W/ BRONZE TINT

SIZE | 17X9 | 18X9



8302 SCOUT

FINISH | MATTE BLACK
GOLD W/ BLACK LIP

SIZE | 17X8.5 | 18X9



8303 VOYAGER

FINISH | MATTE BLACK
DARK BRONZE

SIZE | 15X7 | 17X8 | 17X8.5 | 18X9

APPLICABLE FOR CUV, VAN AND TRUCK

17" 8303 VOYAGER | MATTE BLACK
2019 MERCEDES SPRINTER VAN



20
23



8306 RIDGELINE | GLOSS BRONZE W/ BLACK LIP



8304 DELTA

FINISH MATTE BLACK
MATTE GUNMETAL W/ MATTE
BLACK LIP

SIZE 17X9 | 20X9



NEW SIZES

8305 COMPASS

FINISH SATIN BLACK
GLOSS GRAPHITE

SIZE 15X7 | 17X9 | 18X9 | 20X9



NEW STYLE

8306 RIDGELINE

FINISH SATIN BLACK
GLOSS BRONZE W/ BLACK LIP

SIZE 17X8.5

20
23



8307 CONVOY | SATIN BRONZE | SATIN BLACK



20
23

MAYHEM
W H E E L S

MAYHEMWHEELS.COM / @MAYHEMWHEELS



NEW STYLE

8307 CONVOY

FINISH SATIN BLACK
SATIN BRONZE

SIZE 17X9



NEW STYLE

8309 GRANITE

FINISH SATIN BLACK
SATIN BRONZE

SIZE 17X9



8015 WARRIOR

FINISH MATTE BLACK
BLACK W/ MILLED SPOKES
BLACK W/ MACHINED FACE
CHROME
BLACK W/ PRISM RED
BLACK W/ PRISM BLUE

SIZE 17X7.5 | 17X9 | 18X9 | 20X9 | 20X10
20X12 | 22X12





8309 GRANITE | SATIN BRONZE

20
23

MAYHEM
W H E E L S

MAYHEMWHEELS.COM / @MAYHEMWHEELS



8030 CHAOS

FINISH | MATTE BLACK
CHROME

SIZE | 18X9 | 20X9



8090 RAMPAGE

FINISH | MATTE BLACK
BLACK W/ MILLED SPOKES

SIZE | 17X9 | 18X9 | 20X9 | 20X10
22X9.5



8100 MONSTIR

FINISH | GLOSS BLACK W/ MILLED SPOKES
CHROME

SIZE | 17X9 | 18X9 | 20X9 | 20X10
22X10



8103 FIERCE

FINISH | BLACK W/ MILLED SPOKES
CHROME

SIZE | 17X9 | 18X9 | 20X9 | 20X10
22X12



8104 ARSENAL

FINISH | BLACK W/ MACHINED FACE
CHROME

SIZE | 17X9 | 18X9 | 20X9 | 20X10 | 22X12



8105 COMBAT

FINISH | BLACK W/ MILLED SPOKES
CHROME

SIZE | 17X9 | 18X9 | 20X9 | 20X10 | 20X12

20
23

MAYHEM
W H E E L S

MAYHEMWHEELS.COM / @MAYHEMWHEELS



8107 COGENT

FINISH MATTE BLACK
GLOSS BLACK W/ MILLED SPOKES
GLOSS BLACK W/ PRISM RED

SIZE 17X9 | 18X9 | 20X9 | 20X10 | 20X12
22X10



NEW FINISH

8107D COGENT DUALY

FINISH GLOSS BLACK W/ MILLED SPOKES
GLOSS BLACK

SIZE 20X8.25 | 22X8.25
STOCK, LEVELED, AND LIFTED APPLICATIONS
AVAILABLE





8108 DECOY

FINISH GLOSS BLACK W/ MILLED SPOKES
SIZE 20X9 | 20X10



8109 CROSSFIRE

FINISH GLOSS BLACK W/ MILLED SPOKES
SIZE 20X9.5 | 22X9.5



8110 TRIPWIRE

FINISH MATTE BLACK
 BLACK W/ MILLED SPOKES
 BLACK W/ PRISM RED
SIZE 20X9 | 20X10

20
23





20" 8110 TRIPWIRE | MATTE BLACK
2019 RAM F350 1500

20
23

MAYHEM
W H E E L S

MAYHEMWHEELS.COM / @MAYHEMWHEELS



8111 FLYWHEEL | BLACK W/ MILLED SPOKES



8111 FLYWHEEL

FINISH	BLACK W/ MILLED SPOKES
SIZE	20X9 20X10 22X10



8112 ESSEX

FINISH	BLACK W/ MILLED SPOKES
SIZE	20X9 20X10 20X12 22X12



8113 CORTEX

FINISH	MATTE BLACK
	MATTE BLACK W/ DARK TINT
SIZE	17X9 18X9 20X9 20X10



8114 UTOPIA

FINISH	GLOSS BLACK W/ MILLED SPOKES
SIZE	20X9 20X10 22X12



8115 APOLLO

FINISH	GLOSS BLACK W/ MILLED SPOKES
	GLOSS BLACK W/ PRISM RED
SIZE	20X9 20X10

20
23



17" 8113 CORTEX | MATTE BLACK W/ DARK TINT
17" 2022 JEEP GLADIATOR JT



20
23

MAYHEM
W H E E L S

MAYHEMWHEELS.COM / @MAYHEMWHEELS



NEW STYLE

8116 INTREPID

FINISH	GLOSS BLACK
	GLOSS BRONZE W/ BLACK LIP
	GLOSS BRONZE
SIZE	18X9 20X9 20X10



NEW STYLE

8117 HERMOSA

FINISH	MATTE BLACK
	GLOSS BLACK MILLED
SIZE	20X9 20X10 20X12



NEW STYLE

8118 ORDINANCE

FINISH	GLOSS BLACK
	GLOSS BLACK MILLED
	MATTE BRONZE MILLED
SIZE	20X9



FORGED

8181 CHALLENGER

FINISH | GLOSS BLACK
POLISHED

SIZE | 22X8.25
CAPS NOT INCLUDED, 10 LUG ONLY



8116 INTREPID | GLOSS BLACK | GLOSS BRONZE W/ BLACK LIP

20
23



Dirty Life Wheels was created with one goal in mind: to design and engineer the best wheels in the world. We've assembled a team of the most talented wheel minds in the industry and utilize the latest engineering techniques to build wheels that are reliable, race-proven, and built to withstand the most rigorous conditions. From trails to checkers, our wheels have what it takes to perform at the highest level.

9306 MESA

AVAILABLE IN:
MATTE BLACK
DARK BRONZE





17" 9306 MESA | MATTE BLACK
2021 FORD BRONCO

20
23



DIRTYLIFEWHEELS.COM / @DIRTYLIFEWHEELS



STREET SERIES

9305 THEORY

FINISH MATTE BLACK W/ BLACK LIP
MATTE GOLD W/ BLACK LIP
MATTE GUNMETAL W/ BLACK LIP

SIZE 16X8 | 17X9 | 20X9



STREET SERIES

9306 MESA

FINISH MATTE BLACK
DARK BRONZE

SIZE 17X9



STREET SERIES

9307 DRIFTER

FINISH MATTE BLACK
MATTE GOLD W/ BLACK LIP

SIZE 17X8.5



17" 9310 CANYON | MATTE BLACK
2021 FORD BRONCO

20
23



DIRTYLIFEWHEELS.COM / @DIRTYLIFEWHEELS



STREET SERIES

9308 CAGE

FINISH MATTE BLACK
MATTE GOLD

SIZE 17X8.5



STREET SERIES

9309 CANYON PRO

FINISH MATTE BLACK W/ BLACK LIP
SATIN GOLD W/ BLACK LIP
SATIN GRAPHITE W/ BLACK LIP

SIZE 17X9



STREET SERIES

9310 CANYON

FINISH MATTE BLACK
SATIN GOLD
SATIN GRAPHITE

SIZE 17X9



STREET SERIES

9311 ENIGMA PRO

FINISH	MATTE BLACK W/ BLACK LIP
	SATIN GOLD W/ BLACK LIP
	SATIN GRAPHITE W/ BLACK LIP
SIZE	17X9



NEW STYLE

STREET SERIES

9315 COMPOUND

FINISH	MATTE BLACK
	DESERT SAND
	CRIMSON CANDY RED
SIZE	17X9 18X9 20X9



NEW STYLE

STREET SERIES

9316 JOURNEY

FINISH	MATTE BLACK
	SATIN BRONZE
SIZE	17X8.5

20
23



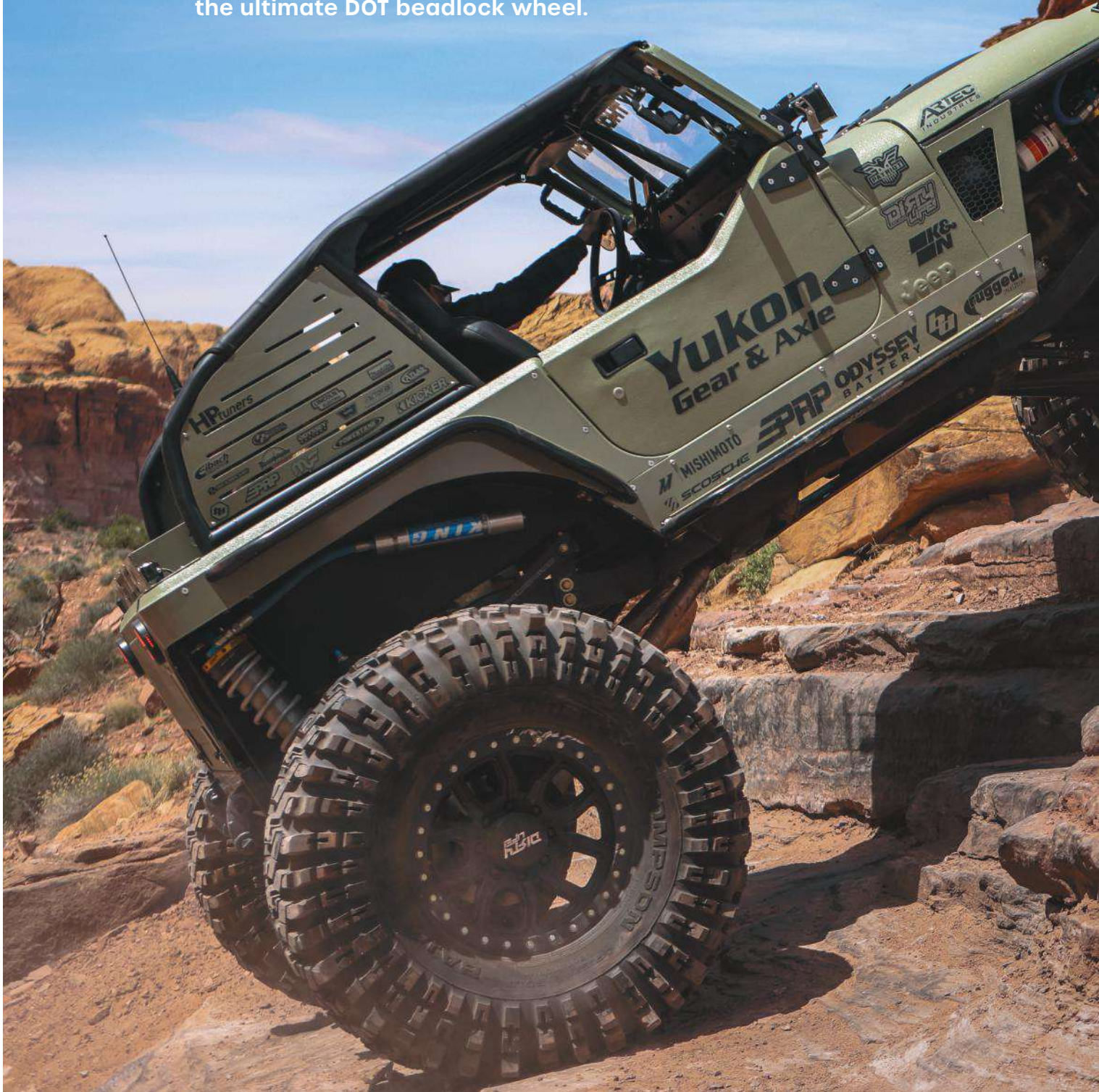


17" 9315 COMPOUND | CUSTOM FINISH
2020 JEEP GLADIATOR

20
23

DUAL-TEK BEADLOCK

The Dual-Tek Series from Dirty Life is the ultimate DOT beadlock wheel.





No need for two sets of wheels for the street and the trail. Mount your tires using the standard DOT bead seat for street use or choose the functional beadlock seat for offroad use.

TIRE BEAD
LOCATION

TIRE BEAD
LOCATION

SIMULATED RINGS
FOR STREET USE ONLY

FORGED BEADLOCK RACE
RING FOR OFFROAD USE ONLY

20" 9303 DT-1 | 20x9 | *MATTE BLACK W/ FORGED BEADLOCK RACE RING
CUSTOM FABRICATED JEEP CJ

20
23



DIRTYLIFEWHEELS.COM / @DIRTYLIFEWHEELS



9303 DT-1

- FINISH** MATTE BLACK W/ SIMULATED BEADLOCK RING
SATIN GOLD W/ SIMULATED BEADLOCK RING
CRIMSON CANDY RED W/ SIMULATED BEADLOCK RING
SATIN GRAPHITE W/ SIMULATED BEADLOCK RING
- SIZE** 17X9 | 20X9



9303 DT-1

- FINISH** MATTE BLACK W/ OPTIONAL RASH RING
SATIN GOLD W/ OPTIONAL RASH RING
SATIN GRAPHITE W/ OPTIONAL RASH RING
- SIZE** 17X9 | 20X9
9303RASHRING-17MB
9303RASHRING-20M



9304 DT-2

- FINISH** MATTE BLACK W/ SIMULATED BEADLOCK RING
SATIN GOLD W/ SIMULATED BEADLOCK RING
SATIN GRAPHITE W/ SIMULATED BEADLOCK RING
- SIZE** 17X9 | 20X9





17" 9304 DT-2 | CUSTOM FINISH W/FORGED BEADLOCK RACE RING
CUSTOM FABRICATED JEEP LJ



DUAL-TEK
BEADLOCK

9304 DT-2

FINISH MATTE BLACK W/ OPTIONAL RASH RING
SATIN GOLD W/ OPTIONAL RASH RING

SIZE 17X9 | 20X9
9304RASHRING-17MB
9304RASHRING-20M

DUAL-TEK
ACCESSORIES

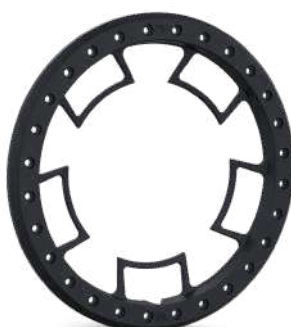
The optional rash ring provides a distinct look to your Dual-Tek wheel. The forged race ring is required for beadlock applications.

OPTIONAL FORGED BEADLOCK RACE RING



9302RACERING-17MB
9302RACERING-20M
9302RACERING-20MB

OPTIONAL RASH RING FOR DT-1



9303RASHRING-17MB
9303RASHRING-20M

OPTIONAL RASH RING FOR DT-2



9304RASHRING-17MB
9304RASHRING-20MB

SIMULATED (PLASTIC) RING FOR STREET USE



9303SIMURING-17MB
9303SIMURING-20MB

20
23

RACE SERIES

BEADLOCK



17" 9302 ROADKILL RACE BEADLOCK | MACHINED
GOODALL OFFROAD MOTORSPORTS | ULTRA 4 RACING | 4500 MODIFIED CLASS



17" 9312 MESA RACE BEADLOCK | MACHINED | CUSTOM FABRICATED JEEP TJ



17" 9314 CANYON RACE BEADLOCK | CUSTOM FINISH | CUSTOM FABRICATED JEEP CJ

20
23



DIRTYLIFEWHEELS.COM / @DIRTYLIFEWHEELS



RACE SERIES
BEADLOCK

9302 ROADKILL BEADLOCK

FINISH SATIN BLACK
MACHINED/AS-CAST
CRIMSON CANDY RED
W/BLACK RING

SIZE 17X9
BEADLOCK WHEELS ARE FOR OFF-ROAD
USE ONLY AND ARE NOT D.O.T. APPROVED



RACE SERIES
BEADLOCK

9312 MESA RACE BEADLOCK

FINISH SATIN BLACK
MACHINED/AS-CAST

SIZE 17X9
BEADLOCK WHEELS ARE FOR OFF-ROAD
USE ONLY AND ARE NOT D.O.T. APPROVED



RACE SERIES
BEADLOCK

9313 ENIGMA RACE BEADLOCK

FINISH SATIN BLACK
MACHINED/AS-CAST
CRIMSON CANDY RED
W/BLACK RING

SIZE 17X9
BEADLOCK WHEELS ARE FOR OFF-ROAD
USE ONLY AND ARE NOT D.O.T. APPROVED



17" 9302 ROADKILL BEADLOCK | MACHINED / AS-CAST
KEVIN STEARNS 4411 | CLASS 4400 ROCK BUGGY



NEW SIZE

RACE SERIES
BEADLOCK

9314 CANYON RACE BEADLOCK

FINISH SATIN BLACK
MACHINED

SIZE 17X9 | 20X10
BEADLOCK WHEELS ARE FOR OFF-ROAD
USE ONLY AND ARE NOT D.O.T. APPROVED

20
23

UTV SERIES



15" 9309R CANYON UTV RACE BEADLOCK | SATIN BLACK
ADAM FITZA RACING | ULTRA 4 RACING | POLARIS RZR TURBO S





UTV SERIES

9302 ROADKILL BEADLOCK

FINISH SATIN BLACK
MACHINED / AS CAST

SIZE 14X7 | 15X7
BEADLOCK WHEELS ARE FOR OFF-ROAD
USE ONLY AND ARE NOT D.O.T. APPROVED



UTV SERIES

9309R CANYON UTV RACE BEADLOCK

FINISH SATIN BLACK
MACHINED / AS CAST

SIZE 15X7
BEADLOCK WHEELS ARE FOR OFF-ROAD
USE ONLY AND ARE NOT D.O.T. APPROVED



UTV SERIES

9310S CANYON UTV

FINISH SATIN BLACK
MACHINED / AS CAST

SIZE 14X7 | 15X7

20
23



Cali Off-Road boasts a rebellious spirit and a vision to design and develop pristine styles that handle everything from blacktop to backwoods and beyond. Since our inception, we have pushed boundaries and taken our products to places no one would dare go before. Our radical look and feel is unmatched, gaining massive attention and a new breed of followers.



9115 INVADER

AVAILABLE IN:
CHROME
GLOSS BLACK W/ MILLED SPOKES
BRUSHED AND CLEAR COAT





26" 9115 INVADER | BRUSHED W/ MILLED SPOKES
2020 FORD F-250

20
23



CALIOFFROADWHEELS.COM / @CALIOFFROAD



9108 SWITCHBACK

FINISH	GLOSS BLACK W/ MILLED SPOKES
	POLISHED W/ MILLED SPOKES
SIZE	20X9 20X10 20X12
	22X12 24X12



9109 RAWKON

FINISH	MATTE BLACK
	GLOSS GRAPHITE
SIZE	20X10 22X12 24X12



9110 SUMMIT

FINISH	POLISHED W/ MILLED SPOKES
	BRUSHED & CLEAR COATED
	GLOSS BLACK W/ MILLED SPOKES
	BLACK W/ RED MILLED SPOKES
	BLACK W/ BLUE MILLED SPOKES
SIZE	20X9 20X10 20X12 22X10
	22X12 24X14 26X14





9110D SUMMIT DUALLY

FINISH | GLOSS BLACK W/ MILLED SPOKES
POLISHED W/ MILLED SPOKES

SIZE | 20X8.25 | 22X8.25
STOCK, LEVELED AND LIFTED APPLICATIONS
AVAILABLE



9111 SEVENFOLD

FINISH | GLOSS BLACK W/ MILLED SPOKES
POLISHED W/ MILLED WINDOWS
BRUSHED & CLEAR COATED

SIZE | 20X9 | 20X10 | 20X12 | 22X12
24X12



9112 GEMNI

FINISH | GLOSS BLACK W/ MILLED SPOKES
POLISHED W/ MILLED WINDOWS
BRUSHED & CLEAR COATED

SIZE | 20X9 | 20X10 | 20X12 | 22X12
24X14



20
23



CALIOFFROADWHEELS.COM / @CALIOFFROAD



9113 PARADOX | GLOSS BLACK W/ MILLED SPOKES



9113 PARADOX

FINISH	GLOSS BLACK W/ MILLED SPOKES
	POLISHED W/ MILLED WINDOWS
SIZE	20X9 20X10 20X12 22X12 24X14



9114 PURGE

FINISH	GLOSS BLACK W/ MILLED SPOKES
	POLISHED W/ MILLED WINDOWS
SIZE	20X10 20X12 22X12 24X14



9115 INVADER

FINISH	GLOSS BLACK W/ MILLED SPOKES
	POLISHED W/ MILLED WINDOWS
	BRUSHED & CLEAR COAT
SIZE	20X10 22X12 24X14 26X14 28X12

20
23



9115 INVADER | POLISHED W/ MILLED WINDOWS
2021 FORD SUPER DUTY F-250



20
23



CALIOFFROADWHEELS.COM / @CALIOFFROAD



NEW STYLE

9115D INVADER DUALY

FINISH GLOSS BLACK W/ MILLED SPOKES
CHROME

SIZE 22X8.25 | 24X8.25



NEW SIZES

9116 VERTEX

FINISH GLOSS BLACK W/ MILLED SPOKES
CHROME

SIZE 20X10 | 22X12 | 24X14 | 26X14



NEW STYLE

9117 AUBURN

FINISH GLOSS BLACK W/ MILLED SPOKES
POLISHED W/ MILLED WINDOWS

SIZE 20X9 | 20X10 | 22X12 | 24X14





9117 AUBURN | GLOSS BLACK W/ MILLED SPOKES

20
23

AMERICAN TR XX

At American Truxx, we believe that your truck is the rolling metal embodiment of the American Spirit. That's why we offer unique custom wheels that loudly proclaim the style and attitude of the individual driving it. We've got 100% pure, concentrated bad ass attitude in every box, and we're proud to be one of the leading providers of truck wheels.

AT1919 EVOLUTION

AVAILABLE IN:
BLACK MILLED
BLACK W/ RED MILLED SPOKES





AT919 EVOLUTION | BLACK W/ RED MILLED SPOKES

20
23

AMERICAN
TR  XX

AMERICANTRUXX.COM / @AMERICANTRUXX



AT162 VORTEX

FINISH GLOSS BLACK W/ MACHINED FACE
GLOSS BLACK W/ MILLED SPOKES

SIZE 20X10 | 22X12 | 24X14



AT165 WARRIOR

FINISH GLOSS BLACK W/ MACHINED FACE
SATIN BLACK W/ MILLED SPOKES

SIZE 20X10 | 20X12 | 22X14



AT184 DNA

FINISH BLACK W/ MACHINED FACE
BLACK W/ MILLED SPOKES

SIZE 20X9 | 22X12 | 24X14 | 26X14



AT1900 SWEEP

FINISH	SATIN BLACK W/ MACHINED FACE
SIZE	20X9 22X12



AT1903 BOOM

FINISH	GLOSS BLACK W/ MILLED SPOKES GUNMETAL W/ BLACK LIP CHROME
SIZE	18X9 20X9 22X12



AT1904 COSMOS

FINISH	SATIN BLACK MILLED W/ SPOKES BRUSH TEXTURE POLISHED
SIZE	20X12 22X12 24X14

20
23

24" AT1905 BLADE | BLACK W/ MILLED SPOKES
2021 CHEVY 2500 HD





20
23

AMERICAN
TRUXX

AMERICANTRUXX.COM / @AMERICANTRUXX



AT1905 BLADE

FINISH	GLOSS BLACK W/ MILLED SPOKES
	CHROME
SIZE	20X12 22X12 24X14



AT1913 DESTINY

FINISH	GLOSS BLACK W/ MACHINED FACE
	GLOSS BLACK W/ MILLED SPOKES
	CHROME
SIZE	20X9 20X10 20X12 22X12 24X14

NEW FINISH

AT1914 EUPHORIA

FINISH	GLOSS BLACK W/ MILLED SPOKES
	CHROME
SIZE	20X9 20X10 22X12





24" AT1913 DESTINY | CUSTOM FINISH
CUSTOM FABRICATED JEEP CJ

20
23

AMERICAN
TRUXX

AMERICANTRUXX.COM / @AMERICANTRUXX



NEW STYLE

AT1915 RESTLESS

FINISH	GLOSS BLACK MACHINED
	GLOSS BLACK W/ MILLED SPOKES
	CHROME
SIZE	20X10 22X12 24X14



NEW STYLE

AT1916 BUTCHER

FINISH	GLOSS BLACK W/ MILLED SPOKES
	CHROME
SIZE	20X9 20X10 22X12



NEW STYLE

AT1917 GOLIATH

FINISH	GLOSS BLACK W/ MILLED SPOKES
	CHROME
SIZE	20X9 20X10 22X12 24X14

AT1917 GOLIATH | GLOSS BLACK W/ MILLED SPOKES



NEW STYLE

AT1919 EVOLUTION

FINISH	GLOSS BLACK W/ MILLED SPOKES
	GLOSS BLACK W/ RED MILLED SPOKES
SIZE	22X12

20
23



Ion Wheels is proud to be an industry leader for nearly 20 years, and we're committed to delivering reliable wheels with consistent performance and tremendous aesthetic appeal. Our team is passionate about making sure that value never takes a back seat to quality, which is why we offer a wide range of wheels that are sure to meet your needs and exceed your expectations.

146

AVAILABLE IN:
GLOSS BLACK
BLACK W/ MACHINED DARK TINT





17" STYLE 146 | BLACK W/ MACHINED DARK TINT
2020 FORD RAPTOR F-150

20
23



IONALLOY.COM / @IONALLOYWHEELS



71

FINISH MACHINED
SIZE 14X6 | 15X7 | 15X8 | 16X7



134

FINISH MATTE BLACK W/ BLACK RING
MATTE GUNMETAL W/ BLACK RING
SIZE 17X8.5 | 18X9 | 20X9 | 20X10



141

FINISH BLACK W/ MILLED SPOKES
CHROME
SIZE 17X9 | 18X9 | 20X9 | 20X10
20X12



142

FINISH	MATTE BLACK
	GLOSS BLACK W/ MACHINED FACE
SIZE	17X9 18X9 20X9



143

FINISH	MATTE BLACK
	GLOSS BLACK W/ MACHINED FACE
	GLOSS BLACK W/ RED TINT
SIZE	17X9 18X9 20X9 20X10



144

FINISH	MATTE BLACK
	GLOSS BLACK W/ MACHINED FACE
SIZE	17X9 20X9 20X10

20
23



IONALLOY.COM / @IONALLOYWHEELS



146

FINISH	GLOSS BLACK
	MATTE BLACK W/ MACHINED DARK TINT
SIZE	17X9 20X9 20X10



NEW STYLE

147

FINISH	GLOSS BLACK
	GLOSS BLACK MACHINED
SIZE	17X9 20X9 20X10



NEW STYLE

149

FINISH	MATTE BLACK
	GLOSS BLACK MACHINED
SIZE	20X9 20X10



STYLE 146 | BLACK W/ MACHINED DARK TINT

20
23



IONALLOY.COM / @IONALLOYWHEELS



STYLE 151 | GLOSS BLACK MILLED



NEW STYLE

151

FINISH | GLOSS BLACK MILLED
SIZE | 20X9 | 20X10



NEW STYLE

152

FINISH | GLOSS BLACK W/ MILLED SPOKES
GLOSS BLACK W/ MACHINED
FACE
SIZE | 20X9



167 DUALY

FINISH | MATTE BLACK
POLISHED
SIZE | 16X6 | 17X6.5



20
23



IONALLOY.COM / @IONALLOYWHEELS



171

FINISH	MATTE BLACK
	GLOSS BLACK W/ MACHINED LIP
	POLISHED
SIZE	15X8 15X10 16X8 16X10 17X9
	18X9



174

FINISH	GLOSS BLACK W/ MACHINED LIP
SIZE	15X8 15X10 16X8 16X10 17X9
	18X9



179

FINISH	MATTE BLACK
	MATTE BLACK W/ MACHINED FACE & LIP
SIZE	16X8 17X8 17X9 18X9 20X9



14 TRAILER

FINISH	GLOSS BLACK W/ MACHINED FACE
SIZE	14X6, 5 LUG ONLY



14 TRAILER

FINISH	GLOSS BLACK W/ MACHINED FACE
SIZE	15X6, 5 & 6 LUG



136 TRAILER

FINISH	GLOSS BLACK W/ MACHINED FACE
SIZE	14X6 15X6

20
23



Ridler Wheels is all about evoking nostalgia and blending it with modern-day allure. Our wheels are designed to excite the senses and give your car the perfect look that will put a grin on your face every time. Whether it's old school, new school or somewhere in between, we have the perfect wheel that will remind you of why you fell in love with your car.

STYLE 695

AVAILABLE IN:
MATTE BLACK W/ MACHINED LIP
GLOSS GREY W/ MACHINED LIP
CHROME





STYLE 695 | CHROME
1967 FORD MUSTANG

20
23



RIDLERWHEEL.COM / @RIDLER_WHEELS



605

FINISH AS-CAST W/ MACHINED SPOKES
& LIP

SIZE 17X8 | 18X8 | 18X9.5 | 20X8.5
20X10

SPINNER CAP SOLD SEPARATELY



606

FINISH MATTE BLACK W/ MACHINED LIP
GLOSS GREY W/ MACHINED LIP
CHROME

SIZE 17X7 | 17X8 | 18X8 | 18X9.5 | 20X8.5
20X9 | 20X10 | 20X10.5 | 22X9
22X10.5



607

FINISH MATTE BLACK
GLOSS GREY W/ MACHINED FACE
POLISHED

SIZE 18X8 | 18X9.5 | 20X8.5 | 20X9
20X10 | 20X10.5 | 22X9 | 22X10.5



STYLE 605 | AS-CAST W/ MACHINED SPOKES & LIP
1967 FORD MUSTANG GT



608

FINISH | GLOSS GREY W/ MILLED SPOKES
CHROME

SIZE | 18X8 | 18X9 | 20X8.5 | 20X10
22X9 | 22X10.5

20
23



STYLE 606 | CHROME
1936 CHEVY LOW CAB-REAR TWIN TURBO



20
23



RIDLERWHEEL.COM / @RIDLER_WHEELS



609

FINISH	MATTE BLACK
	CHROME
SIZE	20X9 22X9.5



NEW STYLE

610

FINISH	MATTE BLACK
	GLOSS GREY W/ POLISHED LIP
SIZE	17X7 17X8 18X8 18X9 20X8.5
	20X10
	SPINNER CAP SOLD SEPARATELY



645

FINISH	MATTE BLACK W/ MACHINED FACE
	GLOSS GREY W/ MACHINED FACE & POLISHED LIP
	CHROME
SIZE	17X7 17X8 18X8 18X9.5 20X8.5
	20X10



650

FINISH MATTE BLACK W/ POLISHED LIP
GLOSS GREY W/ POLISHED LIP
CHROME

SIZE 15X7 | 15X8 | 17X7 | 17X8 | 18X8
18X9.5 | 20X8.5 | 20X10 | 22X9.5



675

FINISH MATTE BLACK W/ MACHINED LIP
SATIN SILVER W/ MACHINED LIP
POLISHED
CHROME

SIZE 15X7 | 15X8 | 17X7 | 17X8 | 17X9



695

FINISH MATTE BLACK W/ MACHINED LIP
GLOSS GREY W/ MACHINED LIP
CHROME

SIZE 17X7 | 17X8 | 18X8 | 18X9.5 | 20X8.5
20X10 | 22X9 | 22X10.5

20
23

TOUREN

At Touren Wheels, we see beauty in motion—which is why we're passionate about creating high-quality wheels that reflect your taste and sense of style. Our engineers scrutinize every detail to ensure that we deliver the most precise products possible. We settle for nothing less than excellence, and we're always seeking perfection.

3291 TR91

AVAILABLE IN:
MATTE BLACK
BRUSHED MATTE BLACK W/ DARK TINT





22" 3291 TR91 | BRUSHED MATTE BLACK W/ DARK TINT
2020 AUDI E-TRON

20
23

TOUREN

TOURENWHEELS.COM / @TOURENWHEELS

FLOW FORMED

Using an innovative flow formed process, the TF Series is a light weight wheel with reduced unsprung weight and crisp responsiveness. The TF Series delivers the highest quality and performance for your vehicle.

3503 TF03 | MATTE BRONZE



FLOW FORMED

3501 TF01

FINISH | BRUSHED MATTE BLACK
BRUSHED SILVER

SIZE | 20X9 | 20X10



FLOW FORMED

3503 TF03

FINISH MATTE BLACK
GRAPHITE
MATTE BRONZE

SIZE 17X7.5 | 18X8 | 20X8.5 | 20X10



NEW STYLE

FLOW FORMED

3296 TF96

FINISH GLOSS BLACK
GLOSS BLACK MACHINED

SIZE 20X9



NEW STYLE

FLOW FORMED

3297 TF97

FINISH GLOSS BLACK
GLOSS BLACK MACHINED

SIZE 20X9

20
23

TOUREN

TOURENWHEELS.COM / @TOURENWHEELS

CAST

Progressive cast monoblock composition delivers absolute durability without sacrificing design. Subtle lines and refined details deliver a graceful look that offers standard and staggered fitments for many popular cars while being mindful of large brake caliper clearances

3291 TR91 | BRUSHED BLACK W/ DARK TINT



	CAST
3270	TR70
FINISH	BLACK W/ MILLED SPOKES SILVER W/ MILLED SPOKES
SIZE	17X7.5 18X8 20X8.5



CAST
3275 TR75
FINISH MATTE BLACK
 BRUSHED BLACK W/ DARK TINT
SIZE 18X8 | 19X8.5 | 20X9



CAST
3276 TR76
FINISH GLOSS BLACK
 CHROME
 GLOSS GRAPHITE
SIZE 17X8 | 18X8 | 19X8.5 | 20X8.5



CAST
3278 TR78
FINISH GLOSS BLACK
 BRUSHED BLACK W/ DARK TINT
SIZE 18X8 | 20X9

20
23

TOUREN

TOURENWHEELS.COM / @TOURENWHEELS



CAST

3279 TR79

FINISH GLOSS BLACK
BRUSHED MATTE BLACK W/ DARK TINT
GLOSS BLACK W/ RED TINTED FACE
CRIMSON CANDY RED

SIZE 5 LUG 17X8 | 18X8 | 18X9.5 | 20X9
20X10.5

6 LUG 20X9 | 22X9.5

6 LUG ONLY AVAILABLE IN GLOSS BLACK
AND BRUSHED MATTE BLACK W/ DARK TINT

CAST

3291 TR91

FINISH GLOSS BLACK
BRUSHED MATTE BLACK W/
DARK TINT

SIZE 5 LUG 18X8 | 19X8.5 | 20X9 |
20X10.5

6 LUG 22X9 | 22X9.5



CAST

3292 TR92

FINISH	GLOSS BLACK
	MATTE GOLD
	GLOSS GRAPHITE
SIZE	17X8 18X8 20X9 20X10.5 22X9.5 22X10.5



CAST

3293 TR93

FINISH	SATIN BLACK W/ BLACK RIVET
	GLOSS GRAPHITE W/ BLACK RIVET
SIZE	18X8 20X9

NEW SIZES

CAST

3294 TR94

FINISH	GLOSS BLACK
	BRUSHED W/ GRAPHITE WINDOW
	DARK BRONZE
SIZE	18X8 19X8.5 20X9



20
23

TOUREN

TOURENWHEELS.COM / @TOURENWHEELS



3294 TR94 | BRUSHED W/ GRAPHITE WINDOW

INFINITY

Comprised of clean, engaging designs made of ultra-high quality alloys and created using our advanced low-pressure cast method. The dual patterns and wide offering of sizes is designed to accommodate a vast amount of vehicle platforms.

3260 TR60 | BLACK W/ RED RING



INFINITY

3130 TR3

FINISH | GLOSS BLACK W/ MACHINED FACE

SIZE | 15X7 | 16X7 | 17X7 | 18X8



INFINITY

3190 TR9

FINISH | MATTE BLACK
GLOSS BLACK W/ MACHINED FACE
HYPER SILVER

SIZE | 16X7 | 17X7 | 18X8

20
23

TOUREN

TOURENWHEELS.COM / @TOURENWHEELS



INFINITY

3222 TR22

FINISH	GLOSS BLACK
	HYPERSILVER
SIZE	14X6 15X7 16X7 17X7



INFINITY

3260 TR60

FINISH	MATTE BLACK
	GLOSS SILVER
	MATTE BLACK W/ MACHINED RING
	GLOSS BLACK W/ MACHINED FACE & RING
	GLOSS BLACK W/ RED RING
SIZE	16X7 17X7.5 18X8 19X8.5 20X8.5





INFINITI

3262 TR62

FINISH	BLACK W/ MACHINED FACE
	SILVER W/ MACHINED FACE
SIZE	16X7 17X7 18X7.5



INFINITI

3265 TR65

FINISH	GLOSS BLACK
	SILVER
	GUNMETAL
SIZE	17X7.5 18X8 20X8.5



INFINITI

3266 TR66

FINISH	GLOSS BLACK
	GLOSS BRONZE
SIZE	17X8 18X8 20X9

20
23



At its inception, Mazzi Wheels set the goal of creating beautiful, high-quality wheels that would add the perfect finishing touch to any car, truck or SUV. We use the most advanced casting technology available to ensure that our wheels are long on looks and tall on quality.



378 JINX

AVAILABLE IN:
GLOSS BLACK
GLOSS BLACK MACHINED





337 EDGE

FINISH | GLOSS BLACK W/ MACHINED FACE
CHROME

SIZE | 18X7.5 | 20X8.5 | 22X8.5



341 FUSION

FINISH | GLOSS BLACK W/ MACHINED FACE
CHROME

SIZE | 18X7.5 | 20X8.5 | 22X9.5 | 24X8.5



342 HUSTLER

FINISH | GLOSS BLACK W/ MACHINED FACE
CHROME

SIZE | 18X7.5 | 20X8.5 | 22X9.5 | 24X8.5

20
23



MAZZIWHEELS.COM / @MAZZIWHEELS



351 HYPE

FINISH	GLOSS BLACK W/ MACHINED FACE CHROME
SIZE	18X7.5 20X8.5 20X9 22X8.5



364 ESSENCE

FINISH	GLOSS BLACK W/ MACHINED FACE CHROME
SIZE	20X8.5 22X9.5 24X9.5



367 PROFILE

FINISH	MATTE BLACK CHROME
SIZE	20X8.5 22X9.5 24X9.5



371 STILTS

FINISH	MATTE BLACK
	GLOSS BLACK W/ MACHINED FACE
	CHROME
SIZE	18X8 20X8.5 22X9.5 24X9.5



372 BIG EASY

FINISH	MATTE BLACK
	BLACK W/ MACHINED DARK TINT
	CHROME
SIZE	18X8 20X8.5 22X9.5 24X9.5



373 TWIST TIE

FINISH	MATTE BLACK W/ MACHINED DARK TINT
SIZE	18X8 20X8.5 22X9.5 24X9.5

20
23



MAZZIWHEELS.COM / @MAZZIWHEELS



374 ROLLA

FINISH	GLOSS BLACK W/ MILLED SPOKES
	MATTE BLACK W/ MACHINED DARK TINT
SIZE	22X9.5 24X9.5



376 LAGUNA

FINISH	MATTE BLACK
	GLOSS BLACK W/ MILLED SPOKES
SIZE	18X8 20X8.5 22X8.5 22X9.5



NEW SIZE

377 FREESTYLE

FINISH	GLOSS BLACK MACHINED
	CHROME
SIZE	17X8 18X8 20X8.5



378 JINX

FINISH	GLOSS BLACK
	GLOSS BLACK MACHINED
SIZE	18X8 20X8.5



NEW STYLE

379 LIBRA

FINISH	GLOSS BLACK MACHINED
	CHROME
SIZE	20X8.5

20
23



KRAZE
WHEELS

Kraze Wheels use advanced casting methods and the most rigorous standards to deliver performance, styling, and innovation in all of our designs. We back every wheel with a limited lifetime warranty so you know we are dedicated to the craft of manufacturing the best custom wheels available.



KR185 DOUBLE DOWN

AVAILABLE IN:
GLOSS BLACK
GLOSS BLACK MACHINED
CHROME





KR181 SPINNER

FINISH	SATIN BLACK MILLED
	BLACK W/ MACHINED FACE
	CHROME
SIZE	18X8 20X8.5 22X8.5



KR183 SPECTRA

FINISH	GLOSS BLACK
	GLOSS BLACK W/ MACHINED FACE
SIZE	18X8 20X8.5 22X8.5

NEW STYLE



KR184 RICOCHET

FINISH	BLACK MACHINED
	CHROME
SIZE	20X8.5 22X8.5

20
23



KRAZEWHEELS.COM / @KRAZEWHEELS



NEW SIZES

KR185 DOUBLE DOWN

FINISH	GLOSS BLACK
	GLOSS BLACK MACHINED
	CHROME
SIZE	17X8 18X8 20X8.5 22X9.5



KR190 LUSO

FINISH	GLOSS BLACK
	GLOSS BLACK W/ MACHINED FACE
SIZE	5 LUG 17X8 18X8 20X8.5 22X8.5
	6 LUG 22X9.5



KR191 STUNNA

FINISH	MATTE BLACK W/ MACHINED FACE
SIZE	18X8 20X8.5 22X8.5



KR192 PHASE

FINISH	BLACK W/ MACHINED FACE
SIZE	18X8 20X8.5 22X8.5 22X9.5



KR193 TURISMO

FINISH	GLOSS BLACK W/ MACHINED FACE
SIZE	17X8 18X8 20X8.5



KR194 COSMOS

FINISH	GLOSS BLACK GLOSS BLACK W/ MACHINED FACE
SIZE	17X8 18X8 20X8.5

20
23



KRAZEWHEELS.COM / #KRAZEWHEELS



KR195 MILANO | BLACK W/ MACHINED FACE



KR195 MILANO

FINISH	MATTE BLACK
	GLOSS BLACK W/ MACHINED FACE
	CHROME
SIZE	17X8 18X8 20X8.5



NEW STYLE

KR196 EVOLVE

FINISH	GLOSS BLACK
	GLOSS BLACK MACHINED
SIZE	20X9

**20
23**

TWG  **WHEEL-1**

LIMITED AVAILABILITY

CONTACT YOUR SALES REPRESENTATIVE FOR MORE INFORMATION ON LIMITED WHEELS

8040 TANK



8101 MONSTIR DUALY



AT154 BOMB



AT161 WEB



AT1901 GRIDLOCK



AT1902 KUTZ



3502 TF02



3274 TR74



8301 FLATIRON



9105 BRUTAL DUALY



9107 OBNOXIOUS



AT183 SPYDER



AT185 LONESTAR



AT1907 XCLUSIVE



STYLE 181



STYLE 184



KR141 CRAY



KR182 ROGUE





The logo for AMP Tires is centered in the image. It features the word "AMP" in a large, bold, italicized sans-serif font with a red outline. Below it, the word "Tires" is written in a smaller, red, italicized script font.

AMP
Tires

CONTROL EVERY TERRAIN





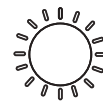
TERRAIN PRO A/T P

The AMP Terrain Pro A/T P delivers a longer tread life and withstands demanding environments. With deep, multi-function tread grooves it provides enhanced traction in a wide variety of conditions while delivering a smooth and controlled ride. A broad selection of sizing and a 60,000 mile warranty drive the Terrain Pro A/T to be the leader of the pack.



FULLY TESTED WINTER TIRE

PERFORMANCE RATINGS



DRY SURFACE



WET SURFACE



RIDE COMFORT



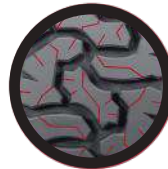
TREAD LIFE



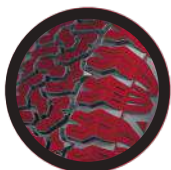
OFF ROAD PERFORMANCE



Unique "Twin Peaks" sidewall and open shoulder design delivers assertive performance in every condition and help evacuate water, mud and snow for improved traction



Stepped tread blocks allow more stable control and multi-direction sipes create greater traction in snow



Advanced compound prevents chipping and delivers a longer tread life with more consistent contact surface to deliver a smooth and controlled ride



Deep grooves and rock ejectors keep tread grooves free of mud, snow, dirt and gravel while mitigating possible punctures



PART NUMBER	SIZE	LOAD RANGE	TREAD DEPTH (1/32 IN)	OVERALL DIAMETER (IN)	OVERALL WIDTH (IN)	MAX LOAD SINGLE (LBS)	MAX PRESS SINGLE	APPROVED RIM WIDTH RANGE (IN)
285-7516AMP/CA2	LT285/75R16	E	15	32.8	11.2	3,750/3,415	80 PSI	7.5-9.0
265-7017AMP/CA2	LT265/70R17	E	15	31.7	10.7	3,195/2,910	80 PSI	7.0-8.5
285-7017AMP/CA2	LT285/70R17	E	15	32.8	11.5	3,195/2,910	80 PSI	7.5-9.0
315-7017AMP/CA2	LT315/70R17	E	15	34.4	12.7	3,195/2,910	65 PSI	8.0-11.0
275-7018AMP/CA2	LT275/70R18	E	15.8	33.2	11	3,640/3,305	80 PSI	7.0-8.5
285-6518AMP/CA2	LT285/65R18	E	15.8	32.6	11.5	3,640/3,305	80 PSI	8.0-10.0
325-6518AMP/CA2	LT325/65R18	E	15.8	34.6	13	3,860/3,525	65 PSI	9.0-12.0
265-6020AMP/CA2	LT265/60R20	E	15	32.5	10.7	3,195/2,910	80 PSI	7.5-9.5
275-5520AMP/CA2	LT275/55R20	D	15.8	31.9	11.2	2,680/2,470	65 PSI	7.5-9.5
275-6020AMP/CA2	LT275/60R20	E	15.8	33	11	3,415 /3,085	80 PSI	7.5-9.5
275-6520AMP/CA2	LT275/65R20	E	15	34.1	11	3,750/3,415	80 PSI	7.5-9.5
285-5520AMP/CA2	LT285/55R20	E	15.8	32.4	11.7	3,305/3,000	80 PSI	8.0-10.0
285-6020AMP/CA2	LT285/60R20	E	15	33.5	11.5	3,640/ 3,305	80 PSI	8.0-10.0
295-6520AMP/CA2	LT295/65R20	E	15.5	35.1	11.8	4,080/3,750	80 PSI	8.0-10.0
305-5520AMP/CA2	LT305/55R20	E	15.8	33.2	12.4	3,195/2,910	65 PSI	8.5-11.0
33-125020AMP/CA2	33X12.50R20LT	E	15.8	32.5	12.5	2,600	65 PSI	8.5-11.0
35-125020AMP/CA2	35X12.50R20LT	E	15.5	34.5	12.5	3,195	65 PSI	8.5-11.0
325-6020AMP/CA2	LT325/60R20	E	15.8	35.4	13.03	3,750/3,415	65 PSI	9.0-12.0
285-4522AMP/CA2	LT285/45R22	D	15.8	32.1	11.2	2,835	65 PSI	9.0-10.5
285-5522AMP/CA2	LT285/55R22	E	15.5	34.4	11.7	3,525/3,195	80 PSI	8.5-10.0
295-5022AMP/CA2	LT295/50R22	E	15.8	33.7	12.2	3305	80 PSI	8.5-10.5
305-3524AMP/CA2	P305/35R24	XL	15.8	32.5	12.2	2,469	50 PSI	10-12
33-125024AMP/CA2F	33X12.50R24LT	F	15.8	32.5	12.6	2,095	80 PSI	10.5-12.5
35-125024AMP/CA2F	35X12.50R24LT	F	15.8	34.5	12.5	2,755	80 PSI	10-12

NEW SIZE



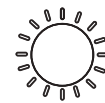
TERRAIN ATTACK A/T A

Inspired by the off-road performance of our Terrain Attack M/T and the stable control of our Terrain Pro A/T, the Terrain Attack A/T A incorporates new, advanced compounds and improved manufacturing technology. The result is a tire that is surefooted, smooth yet aggressive enough to take you from the road to the trails while delivering a long-lasting tire with unmistakable reliability.



FULLY TESTED WINTER TIRE

PERFORMANCE RATINGS



DRY SURFACE



WET SURFACE



RIDE COMFORT



TREAD LIFE



OFF ROAD PERFORMANCE



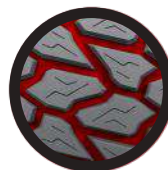
Unique multi-block tread design ensures smooth ride quality along with superior off road handling and grip



The staggered treadblock design was made to improve traction in loose dirt, debris and sand



Sidewall designed with dual variation lug technology for greatly improved traction in all environments and weather conditions



Deep stepped tread blocks channel dirt, mud, snow, slush and water away from the tire in all weather conditions



PART NUMBER	SIZE	LOAD RANGE	TREAD DEPTH (1/32 IN)	OVERALL DIAMETER (IN)	OVERALL WIDTH (IN)	MAX LOAD SINGLE (LBS)	MAX PRESS SINGLE	APPROVED RIM WIDTH RANGE (IN)
265-7017AMP/CA3	LT265/70R17	E	15.5	31.7	10.7	3,195/2,910	80 PSI	7.0-9
285-7017AMP/CA3	LT285/70R17	E	15.5	32.8	11.5	3,195/2,910	80 PSI	7.5-9.5
315-7017AMP/CA3	LT315/70R17	E	15.5	34.4	12.7	3,195/2,910	65 PSI	8.0-10.5
305-6018AMP/CA3	LT305/60R18	E	15.5	32.4	12.24	3,195/2,910	65 PSI	9-11.0
305-7018AMP/CA3	LT305/70R18	E	15.5	34.8	12.24	3,750/3,415	65 PSI	8.5-10.0
265-5020AMP/CA3	LT265/50R20	E	15.5	30.5	10.91	3,195/2,910	80 PSI	7.5-9.5
275-5520AMP/CA3	LT275/55R20	D	15.5	31.9	11.18	2,679	65 PSI	8.0-9.5
285-5520AMP/CA3	LT285/55R20	E	15.5	32.4	11.69	3,303/3,000	80 PSI	8.0-10.0
305-5520AMP/CA3	LT305/55R20	E	15.5	33.2	12.44	3,195/2,910	65 PSI	9-11.0
35-125020AMP/CA3	35X12.50R20LT	E	15.5	34.5	12.5	3,195	65 PSI	8.5-11.0
37-125020AMP/CA3	37X12.50R20LT	E	15.5	36.5	12.5	3,750	65 PSI	8.5-11.0
305-4022AMP/CA3	305/40R22	XL	13.9	31.6	12.32	2,601	50 PSI	10.0-12.0
33-125022AMP/CA3	33X12.50R22LT	E	15.5	33	12.5	3,195	80 PSI	8.5-11.0
35-125022AMP/CA3	35X12.50R22LT	E	15.5	35	12.5	3,305	80 PSI	8.5-11.0

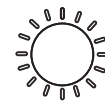


MUD TERRAIN ATTACK M/T A

The Mud Terrain Attack M/T A is designed to perform in the most extreme conditions while offering improved grip and handling for better on-road performance. The 3-Ply "A" logo side wall provides biting edges that provide outstanding grip in mud, rock, sand, snow and more. A full range of sizes up to 38 inches tall. The Mud Terrain Attack M/T A will conquer anything in its path.



PERFORMANCE RATINGS



DRY SURFACE



WET SURFACE



RIDE COMFORT



TREAD LIFE



OFF ROAD PERFORMANCE



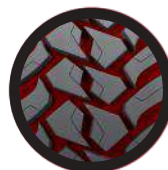
Reinforced sidewall boasts "A" logo lug design which provides dynamic biting edges to maintain grip through the most extreme conditions or when airing down tires



The deep sipes and distinct channel design significantly increase traction in wet conditions



The tread pattern is aggressively designed to remove mud, dirt, snow and debris while keeping continuous contact for superior off road traction and better on-road control



The unique shoulder design features a staggered tread block that provides reliable grip in unreliable terrain and consistent traction for better on-road performance.



PART NUMBER	SIZE	LOAD RANGE	TREAD DEPTH (1/32 IN)	OVERALL DIAMETER (IN)	OVERALL WIDTH (IN)	MAX LOAD SINGLE (LBS)	MAX PRESS SINGLE	APPROVED RIM WIDTH RANGE (IN)
35-125017AMP/CM2	35X12.50R17LT	E	19	34.8	12.5	3,640	80 PSI	8.5-11.0
37-125017AMP/CM2	37X12.50R17LT	D	19	37	13.5	3,520	50 PSI	9.5-10-10.5
285-6518AMP/CM2	LT285/65R18	E	19	33	11.5	3,640/3,305	80 PSI	8.0-10.0
35-125018AMP/CM2	35X12.50R18LT	E	19	35	12.5	3,415	65 PSI	8.5-11.0
285-5520AMP/CM2	LT285/55R20	E	19	33	11.7	3,640/3,305	80 PSI	8.0-10.0
305-5520AMP/CM2	LT305/55R20	E	19	33.5	12.4	3,195	65 PSI	8.5-11.0
33-125020AMP/CM2	33X12.50R20LT	E	19	32.8	12.5	2,600	65 PSI	8.5-11.0
35-115020AMP/CM2	35X11.50R20LT	E	19.5	34.8	11.4	3,525	80 PSI	8.0-10.5
35-125020AMP/CM2	35X12.50R20LT	E	19	34.8	12.5	3,195	80 PSI	8.5-11.0
37-135020AMP/CM2	37X13.50R20LT	E	19	36.8	13.6	3,860	65 PSI	8.5-11.0
325-5022AMP/CM2	LT325/50R22	E	19	34.8	13	3,305	65 PSI	9.0-12.0
33-125022AMP/CM2	33X12.50R22LT	E	19	33	12.5	2,271	65 PSI	8.5-11.0
33-145022AMP/CM2F	33X14.50R22LT	F	19	32.7	14.5	2,830	80 PSI	10.0-13.0
35-155022AMP/CM2F	35X15.50R22LT	F	19	34.7	15.5	3,640	80 PSI	11.0-14.0
37-125022AMP/CM2F	37X12.50R22LT	F	19.5	36.8	12.5	3,860	80 PSI	8.5-11.0
37-135022AMP/CM2	37X13.50R22LT	E	19	37	14	3,415	65 PSI	8.5-11.0
33-135024AMP/CM2F	33X13.50R24LT	F	19.5	32.5	13.6	3,200	80 PSI	11
35-135024AMP/CM2	35X13.50R24LT	E	19.5	34.8	13.6	2,910	65 PSI	8.5-11.0
35-155024AMP/CM2	35X15.50R24LT	E	19.5	24	15.3	2,835	65 PSI	12.5-15
37-135024AMP/CM2	37X13.50R24LT	E	21	37	13.6	3,085	65 PSI	8.5-11.0
38-155024AMP/CM2	38X15.50R24LT	E	19.5	37.8	15.5	3,860	65 PSI	12.5-15
33-135026AMP/CM2F	33X13.50R26LT	F	19.5	32.8	13.6	2,755	80 PSI	11-13
35-135026AMP/CM2F	35X13.50R26LT	F	19.5	34.6	13.6	2,835	80 PSI	11 - 13
37-135026AMP/CM2F	37X13.50R26LT	F	19.5	36.3	13.6	2,835	80 PSI	9.5-12
37-135026AMP/CM2F	37X13.50R26LT	F	19.5	36.3	13.6	2,835	80 PSI	9.5-12
38-155026AMP/CM2	38X15.50R26LT	E	19.5	37.7	15.2	3,750	65 PSI	12.5-15
37-135028AMP/CM2F	37X13.50R28LT	F	19.5	36.76	13.6	2,600	80 PSI	11-14

NEW SIZE

20
23



Body Armor 4x4 started as a passion from a weekend Jeep enthusiast. Committed to bringing the best quality, most functional products at a price that is approachable to everyone. Our warranties are rooted in our belief that we offer the best, highest quality products that you can be proud to own. We look forward to equipping your next adventure.





JL-19352 | JEEP JL & JT MID-STUBBY FRONT BUMPER
JL-4121 | JEEP JL 4-DOOR ROCKCRAWLER SIDE STEPS
JL-6100 | JEEP JL FRONT FENDER LINERS
JL-6102 | JEEP JL FRONT FENDER FLARES
20023 | SKY RIDGE 270 AWNING DRIVER SIDE

20
23

BODY
ARMOR 4X4

BODYARMOR4X4.COM / @BODYARMOR4X4



TC-19339 | HILINE SERIES FRONT WINCH BUMPER AND WINGS

TC-19339
2016-2023 TOYOTA TACOMA
HILINE FRONT WINCH BUMPER

- High clearance design that accommodates factory TRD skid plate
- Removable bull bar to accommodate 2020 models with safety sense
- Requires trimming of factory bumper
- 10,000lb winch capacity
- Two-stage light texture finish in black
- Light fitment: 20" dual row led
- Excludes nightshade and limited models
- KDSS models may need to modify factory plastic filler panel if being used



NEW

TC-19339W
2016-2023 TOYOTA TACOMA
HILINE FRONT BUMPER WINGS

- Compact design fits nice and tight while providing corner protection
- Increased clearance for better approach and departure angles
- Allows more room for bigger tires
- Provisions for 6" single row LED light bar side or stem mount
- Bolts onto Body Armor 4x4 Hiline bumper without drilling or modification
- Requires some trimming
- Durable two-stage light texture black powder coat
- 3 year finish / limited lifetime



NEW

TC-19341
2005-2015 TOYOTA TACOMA
PRO SERIES FRONT WINCH BUMPER

- High clearance design that accommodates factory TRD skid plate
- 10,000lbs winch capacity (fits Warn Zeon winches)
- Winch cutouts for quick access
- Includes license plate bracket
- Light fitment: 30" dual row LED and two cube lights
- 3/16" Plate bumper and 1/4" winch mount
- Requires trimming of factory bumper
- Durable 2-stage light textured black powdercoat finish
- 3-year finish / limited lifetime warranty

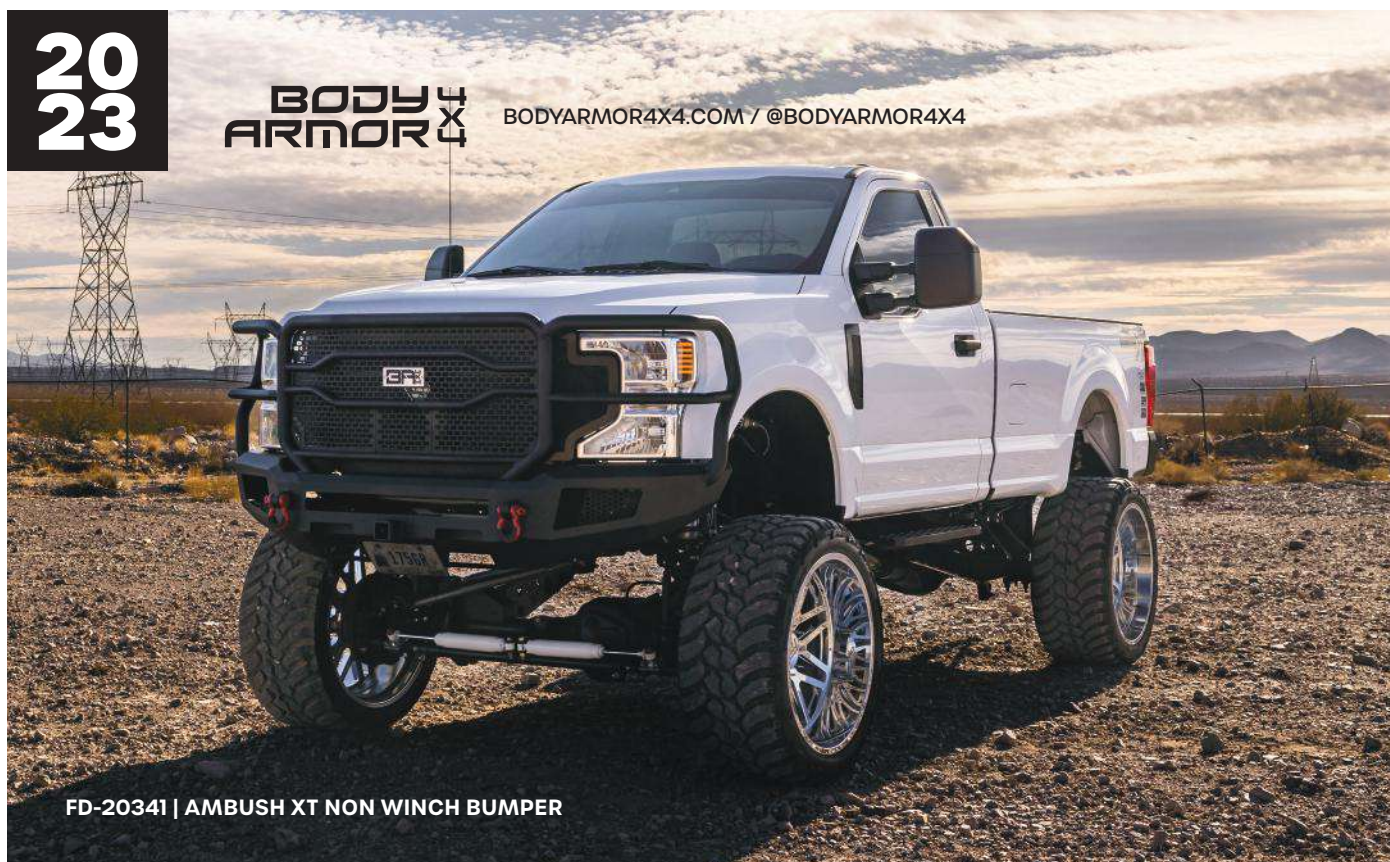


TC-19341 | PRO SERIES FRONT WINCH BUMPER

20
23

BODY
ARMOR 4X4

BODYARMOR4X4.COM / @BODYARMOR4X4



FD-20341 | AMBUSH XT NON WINCH BUMPER

NEW

FD-20341
2017-2021 FORD F250/F350 SUPER DUTY
AMBUSH XT NON WINCH BUMPER

- Sleek modern design with ample clearance
- Contours and follows body lines
- One-piece wrap around design protects grille and headlights
- 2" main tube and 1.25"-1.50" supporting tubes
- Retains factory camera and ACC
- Mesh screen allows maximum airflow while protecting vital components
- Integrated 2" receiver and shackle recovery mounts
- Light fitment : 30" Dual row LED bar and 4 LED cubes
- Non-winch compatible
- 3/16" And 1/4" cold roll steel
- Easy bolt-on installation
- Durable 2-stage light textured black powdercoat finish
- 3-year finish / limited lifetime warranty



NEW

FD-3166
2017-2021 FORD F250/F350 SUPER DUTY
AMBUSH REAR BUMPER

- Sleek modern design with ample clearance
- Contours and follows body lines
- Integrated shackle recovery mounts
- Light fitment : 2 LED cubes
- O.E. sensor compatible
- Accommodates OE hitch
- 3/16" And 1/4" cold roll steel
- Easy bolt-on installation
- Durable 2-stage light textured black powdercoat finish
- 3-year finish / limited lifetime warranty





NEW

2007-2022 JEEP WRANGLER JK/JL AND GLADIATOR JT

ORION FRONT BUMPER (EXCLUDE 4XE)

AVAILABLE IN STUBBY, MID-WIDTH & FULL-WIDTH | MATCHING ORION REAR BUMPERS AVAILABLE

- High clearance design for better approach and departure angles
- Allows clearance for larger tires
- Compact design fits nice and tight while providing needed protection
- Fabricated grille guard and skid plate included
- Light fitment : 18" Single row LED bar and 2 LED cubes or OE fog lights (except steel bumper package)
- 12,000 LBS winch capacity (fits Warn Zeon winches and most standard winches)
- Integrated shackle recovery mounts
- 3/16" steel plate construction
- Easy bolt-on installation
- Durable 2-stage light textured black powdercoat finish
- 3-year finish / limited lifetime warranty



20
23



ROOF TOP TENTS | AWNINGS | WHEELS
CAMPING GEAR | OVERLAND ACCESSORIES



TS01-AG ASCENT | ALPHA GRAY
ALPHA II ROOF TOP TENT | BLACK

ASCENT WHEEL

SKU: Black TS01-GB | Alpha Gray TS01-AG

- Available size: 17x8.5"
- 5 and 6 Lug available
- Rugged A356 aluminum with T6 heat treatment construction
- Aggressive 6 spoke off-road design
- Designed for the overland enthusiast
- Snap in Tuff Stuff Overland cap
- Load rated to 2500 lbs
- TPMS compatible
- Industry leading lifetime structural warranty



TUBULAR TRUCK BED RACK

SKU: 40" TS-UBR-PDR-40 | 51" TS-UBR-PDR-51

- Available in two sizes: 40" and 51"
- Universal fitment (comes with custom pinch plates for inner lip of bed rails)
- Unique sliding center rail which allows rack to be installed from full-size to mid-size trucks
- Powder-coated for a long-lasting finish and protection
- Toyota vehicles with cargo rails require T-nuts for installation



51" TUBULAR TRUCK BED RACK

HARD SHELL ROOF TOP TENTS



ALPINE

SKU: FiftyOne TS-1-1800BLK | SixtyOne TS-1-1900BLK

- Aluminum Hard Shell
- 4 Gas struts allow for dual action opening roof (wedge or pop-up option)
- Roof rack on top of tent (great for kayaks, bikes, and gear)
- Blackout coated fabric (full-screen room with 360-degree visibility to full dark room)
- Under 8" slim profile when packed up and latched (excludes additional roof rack height)
- 3 Entryway options based on build (passenger side, driver side, rear)
- Window awnings (removable)
- Telescoping ladder with angled steps (will not bite into your arches!)
- Interior LED Light Strip (requires power from a USB power pack, not included)
- Memory foam mattress
- Anti-condensation mats included



ALPHA

SKU: Black TS-RTT-CS-BK | Gray TS-RTT-CS-GR

- ABS Hard Shell
- Sleeping Capacity: 3-4 People
- Open dimensions L/W/H: 75x87x5" | Closed dimensions L/W/H: 75x55x15"
- Mattress L/W/H: 87x71x2.36"
- Tent Material: 280 G Poly/Cotton Rip-Stop
- Rainfly Material: 210D Polyester/Oxford PU coated 5000mm
- Heavy-duty aluminum honeycomb floor
- YKK zippers with custom para-cord pulls
- LED Light: Amber & White light (inside and outside)
- 3 window openings w/ mesh screens & window rods
- Skylight with mesh and solid panel
- 2 side window openings have removable (zip-off) rain awnings
- Ladder: Telescoping 7.5' tall w/angled steps
- Available in two different hardshell colors: Gray and Black
- Annex room available, sold separately
- Anti-condensation mat available, sold separately
- Cold weather liner available, sold separately



ALPHA II

SKU: Black TS-RTT-CS2-BK | Gray TS-RTT-CS2-GR

- ABS hard-shell four-season tent with room for two people
- Ultra-fast setup time takes less than two minutes
- 78x53" mattress that is 2.5" thick
- Manufactured from high-quality 280G poly-cotton windproof fabric
- Heavy-duty YKK zippers with custom para-cord pull
- Includes a 210D poly-oxford rainfly
- Three windows with awnings and mesh screens for excellent ventilation and views
- Built-in skylight for star gazing and additional light
- Built-in internal and external LED light strips
- Designed to open to the passenger side only
- All aluminum frame, ladder, and roof rack mounts
- Annex room available, sold separately



20
23

SOFT SHELL ROOF TOP TENTS



ELITE

SKU: TS-RTT-ANX-ELT

- Four-season tent with room for five people
- Massive 96x77" mattress (bigger than a California King) with a washable cover
- Manufactured from high-quality 280D poly-cotton windproof fabric
- Removable internal divider splits the tent into two separate spaces
- Heavy-duty YKK zippers
- Includes a poly-oxford 420D rain fly
- Pull-out overhead veranda
- Unfolds from either side of the vehicle (side or rear)
- All aluminum frame, ladder, and roof rack mounts
- All necessary hardware for complete installation (including tools)
- Heavy-duty PVC driving cover
- Annex room and anti-condensation mat included



RANGER

SKU: TS-RTT-RAN-65

- Sleeping Capacity: 3 People
- Open dimensions L/W/H: 65x96x52" | Closed 65x48x15"
- Tent Material: 280 G Poly/Cotton Rip-Stop
- Rainfly Material: 420D Polyester/Oxford PU coated
- Aluminum & fiberglass floor, 1" thickness
- YKK zippers with custom para-cord pulls
- 3 window openings w/ mesh screens & window rods
- Aluminum Tubular Frame, 1" diameter
- Installation brackets fit crossbars up to 3.25" wide
- Mounting rails: 26.5" apart
- Black Driving Cover, 1000D PVC waterproof
- Sliding Ladder included
- Stainless steel mounting hardware Included
- Annex room available, sold separately
- Anti-condensation mats included



TRAILHEAD

SKU: TS-RTT-TRAILHEAD

- 3 Season Tent
- Dimensions Opened: 56x95x50" | Closed: 56x48x13"
- Tent fabric: 600D polyester Oxford, PU coated, waterproof rating to 3000MM, UV50+ Protected
- Rainfly: 420D polyester Oxford, PU coated, waterproof rating to 3000MM, UV50+ Protected
- Solid panel & insect-free breathable mesh doors and windows
- Built-in skylight for ample light and star gazing
- Ladder: 7.5' Telescoping (1 button operation)
- Mattress: 1.5" foam (density #30) with cotton top cover / waterproof oxford bottom
- Aluminum honeycomb tent floor
- Shoe Bag w/ bottom mesh to allow water/sand to fall out
- 1000D PVC Waterproof driving cover
- Black aluminum frame
- Only weighs 110lbs
- Annex room available, sold separately
- Anti-condensation mats included



AWNINGS



270 DEGREE AWNINGS

SKU: Standard TS-AWN-270-4D-KIT | TS-AWN-270-4P-KIT
XL TS-AWN-270-XL-D-KIT | TS-AWN-270-XL-P-KIT

- Available in two sizes: Standard and XL
- Driver and Passenger orientations available
- 270 Degree Awning provides 80 square feet of shade
- 270 Degree XL Awning provides 129 square feet of shade
- 280GSM poly cotton rip-stop awning fabric
- 2500MM waterproofing and UV protection
- Weather resistant 1000G PVC Driving Cover with heavy-duty zippers
- C-Channel aluminum arms for maximum strength while keeping the awning light
- Aluminum telescoping poles that store inside the awning arms
- Various guy line attachment points for structural support and rain run off
- Attachable shade walls sold separately



180 DEGREE AWNING

SKU: TS-AWN-180-XL-KIT

- Provides 88 square feet of shade
- 280GSM poly cotton rip-stop awning fabric
- 2500MM waterproofing and UV protection
- Weather resistant 1000G PVC Driving Cover with heavy-duty zippers
- C-Channel aluminum arms for maximum strength while keeping the awning light
- 4 aluminum telescoping poles that store inside the awning arms
- Various guy line attachment points for structural support and rain run off
- 2 tie-downs to secure each end of the awning
- Guy lines, heavy-duty steel ground stakes, mounting brackets, hardware, and accessory storage bag
- Attachable shade walls sold separately



ROOF TOP AWNINGS

SKU: 6.5 X 8' TS-AWN-RT-6.5 | 4.5 X 6' TS-AWN-RT-4.5

- Available in two sizes: 6.5 x 4' and 4.5 x 6'
- Rugged and tough 280G poly-cotton Ripstop fabric sheds water and blocks wind
- An all-aluminum frame is both strong and light
- Multiple mounting options
- Includes a tough 1000D PVC driving cover for transport
- Awning shade wall sold separately





ANTIWEAR LUG NUTS WITH 18-POINT CONTACT

Our patented Antiwear Lug Nuts with 18-Point Contact is engineered to allow the inside of sockets to make 18 points of contact instead of the traditional 6. The increase in contact points lead to better torque distribution during installations and significantly reduces the risk of stripping lugs. No stripped lugs, no rust or corrosion. Our lugs are designed to last you a lifetime under proper care.



**6-POINT
CONTACT**



**18-POINT
CONTACT**



**ACORN BULGE
18-POINT**

AEROSPACE COATING

Our patented Neoshield aerospace coating adds an additional layer of protection against rust and corrosion. We use aerospace nanotechnology to add a special coating which minimizes surface pores on our metals. This leads to a smoother, shinier, and significantly more durable finish. Our cutting edge aerospace nanotechnology allows our lugs to hold up untarnished in 300+ hour salt spray testing. This is the last lug nut you will ever use.



**SPLINE
CHROME/BLACK**



**ACORN BULGE 18 PT
CHROME/BLACK**



OPEN END ZINC



**SPLINE LUG BOLT
CHROME/BLACK**



**ACORN LUG BOLT
CHROME/BLACK**



BILLET HUB CENTRIC ADAPTER

- Made from 6061-T6 aircraft grade billet aluminum
- Black anodized corrosion resistant finish
- Carbon steel heat treated studs for added strength
- Hub Centric Adapter made for a precise fit
- Provides increased wheel and tire clearance



PRO WRENCH

- Telescopic performance lug wrench
- Extends up to 21" for maximum leverage
- Patented locking mechanism
- Thin wall dual socket designs
- Pouch included for safe keeping
- Limited lifetime warranty



INCLUDES 2 DUAL SOCKETS

- 17MM
- 13/16"
- 3/4"
- 7/8"

**20
23**

Mr. Lugnut

WHEEL ACCESSORIES

FX
OFF ROAD



**ASSORTED
LUGNUTS**



**VALVE
STEMS**

**WHEEL
WEIGHTS**



**INSTALL
KITS**



**WHEEL
SIMULATORS**



**WHEEL ADAPTERS/HUB CENTRIC SPACERS
AND STANDARD SPACERS**

**TOOL
KITS**





**SPIKED
DUALY**



**SPIKED
UTV**



**SPIKED
CONICAL**



**20
23**

MAX
SENSOR

MAX SENSOR SELECT PRO - GEN 4



ALUMINUM STEM
MXSA002



RUBBER STEM
MXSR002

SENSOR HIGHLIGHTS

Upgraded IC Chip and Hardware Design
Optimized Power Consumption
5-Year or 50,000-Mile Limited Warranty
Made with the Highest Manufacturing Standards in Taiwan



MOST VEHICLE COVERAGE

99.5% Vehicle Coverage,
Including New Year Models
6-Month New Protocol Release



IMPROVED ANTENNA DESIGN

Increased Signal Strength
Optimized Auto-Relearn Time
Compatible with 37"+ and F-Rated Tires



#1 CUSTOMER SUPPORT

Lifetime Technical & License Support
Lifetime Tool Service, plus 1-Year Factor Warranty*

TPMS PROGRAMMING & DIAGNOSTIC TOOL

FEATURES

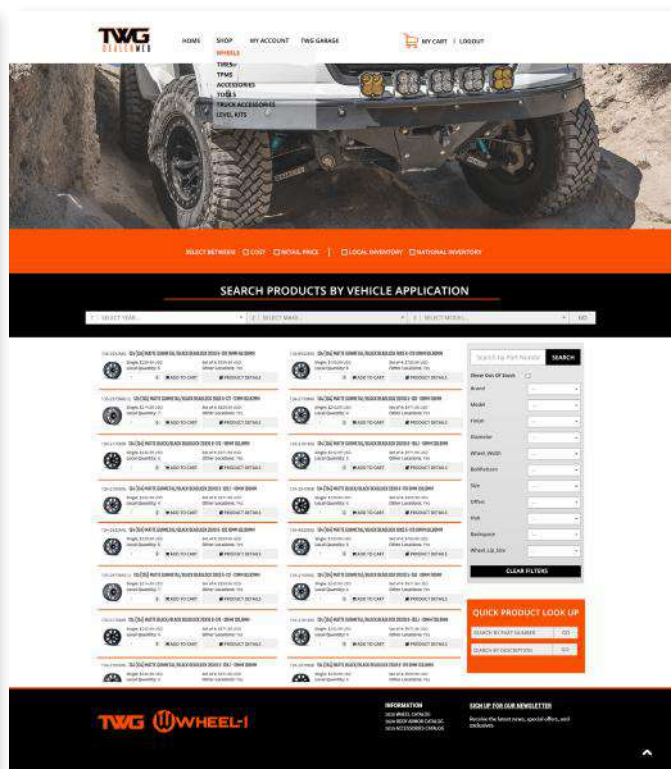
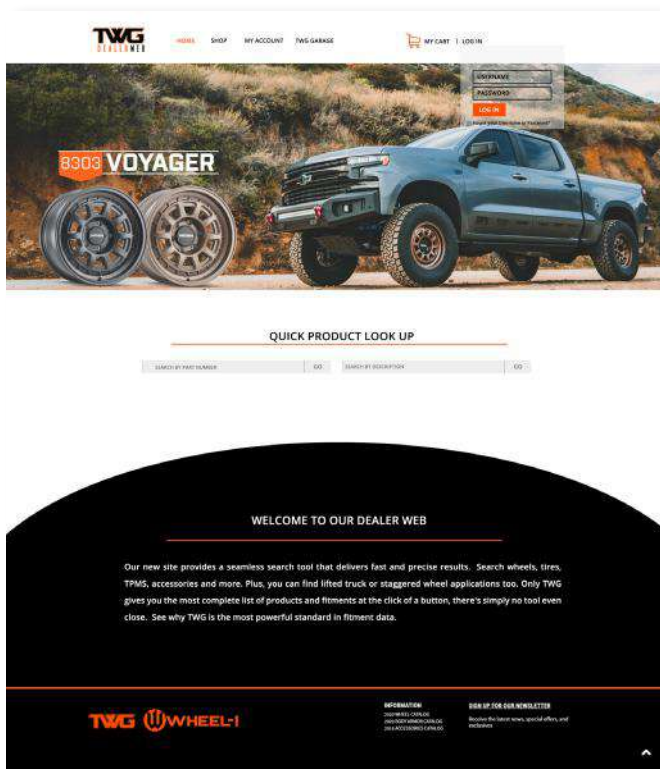
- 4.3" touchscreen
- Programs All aftermarket sensors
- Built-in 2D barcode reader for VIN decoding
- Software update via Wi-Fi
- Real-time support to aftermarket sensor update
- Tire placard value adjustment
- 100% OEM RF type OEM sensor diagnostics
- Reset 90% of vehicles via OBDII
- Touchscreen enables fast navigations on tool
- Intuitive Icon-based software flow
- Built-in TPMS relearn procedures
- Provides TPMS sensor and service kit P/N lookup
- Tests key FOB signal strength
- Programs multiple sensors at the same time
- Built-in BLE technology to serve new technology



VT57
PROGRAMMING
TOOL

DEALER WEB

Visit our portal for dealers online at dealers.thewheelgroup.com to save time with efficient features.



Access our live local and national inventories at your convenience.



24/7 online support and access to your orders and shipments.



Cutting-edge tools to filter products and narrow your search.




Improved shopping cart feature for seamless ordering experience.

20
23



MAYHEM WHEELS | 8304 DELTA | MATTE BLACK
PANDRA | BRAND AMBASSADOR



ONTARIO, CA
1050 N. VINEYARD AVE
ONTARIO, CA 91764
TEL: 626-363-1660
FAX: 626-363-1676

DENVER, CO
11829 E 51ST AVE
DENVER, CO 80239
TEL: 303-373-5030
FAX: 303-371-3974

JACKSONVILLE, FL
7380 PHILIPS HIGHWAY, STE 300
JACKSONVILLE, FL 32256
TEL: 904-448-7641
FAX: 904-448-7647

ATLANTA, GA
550 INDIAN TRAIL RD, STE 300
LILBURN, GA 30047
TEL: 770-446-9909
FAX: 770-446-9889

CHICAGO, IL
4306 UNITED PARKWAY,
SCHILLER PARK, IL 60176
TEL: 630-412-2060
FAX: 630-412-2061

INDIANAPOLIS, IN
5720 KOPETSKY DRIVE SUITE G
INDIANAPOLIS, IN 462176
TEL: 317-780-1661
FAX: 317-780-1666

NORTH KANSAS CITY, MO
1516 GENTRY ST
NORTH KANSAS CITY, MO 64116
TEL: 816-421-0416
FAX: 816-421-1772

CHARLOTTE, NC
6945 NORTHPARK BLVD, STE E
CHARLOTTE, NC 28216
TEL: 704-347-1400
FAX: 704-332-5553

MONTREAL, QC
1390-J NEWTON ST
BOUCHERVILLE, QC J4B 5H2
TEL: 438-896-2796
FAX: 450-655-8553

PHILADELPHIA, PA
10 RUNWAY RD, STE H,
LEVITTOWN, PA 19057
TEL: 732-210-4792
FAX: 732-246-3155

COLUMBUS, OH
2905 E. FOURTH AVE. SUITE 6
COLUMBUS, OH 43219
TEL: 614-253-6247
FAX: 614-252-1890

NASHVILLE, TN
816 SPACE PARK NORTH
GOODLETTSVILLE, TN 37072
TEL: 615-851-7201
FAX: 615-851-7480

DALLAS, TX
2602 W PIONEER PKWY, STE 100
GRAND PRAIRIE, TX 75051
TEL: 972-606-0203
FAX: 972-606-0603

HOUSTON, TX
1998 AFTON ST
HOUSTON, TX 77055
TEL: 713-690-6661
FAX: 713-690-6696

SAN ANTONIO, TX
3455 STEEN ST.
SAN ANTONIO, TX 78219
TEL: 210-568-1751
FAX: 210-568-0878

SEATTLE, WA
11319 58TH AVE E, STE 101
PUYALLUP, WA 98373
TEL: 253-883-2049
FAX: 253-883-2045

VANCOVER, BC
106 - 5350 B 275ST
LANGLEY, BC V4W 0C1
TEL: 604-626-0933
FAX: 604-626-0930

TORONTO, ON
359 VAUGHAN VALLEY BLVD
WOODBIDGE, ON L4H 3B5
TEL: 905-694-9754
FAX: 905-265-8187



THEWHEELGROUP.COM