

***Model 43218***  
***Adjust a light head***

Do you have a our Battery-Powered Motion-Activated Dual Head LED Security Spotlight (model 43218)? Do you want to adjust the light heads so they are tighter or looser? Luckily, they can be adjusted quickly with a paperclip and a Phillips-head screw driver.

These instructions will guide you, step-by-step, through the process of adjusting the light heads.

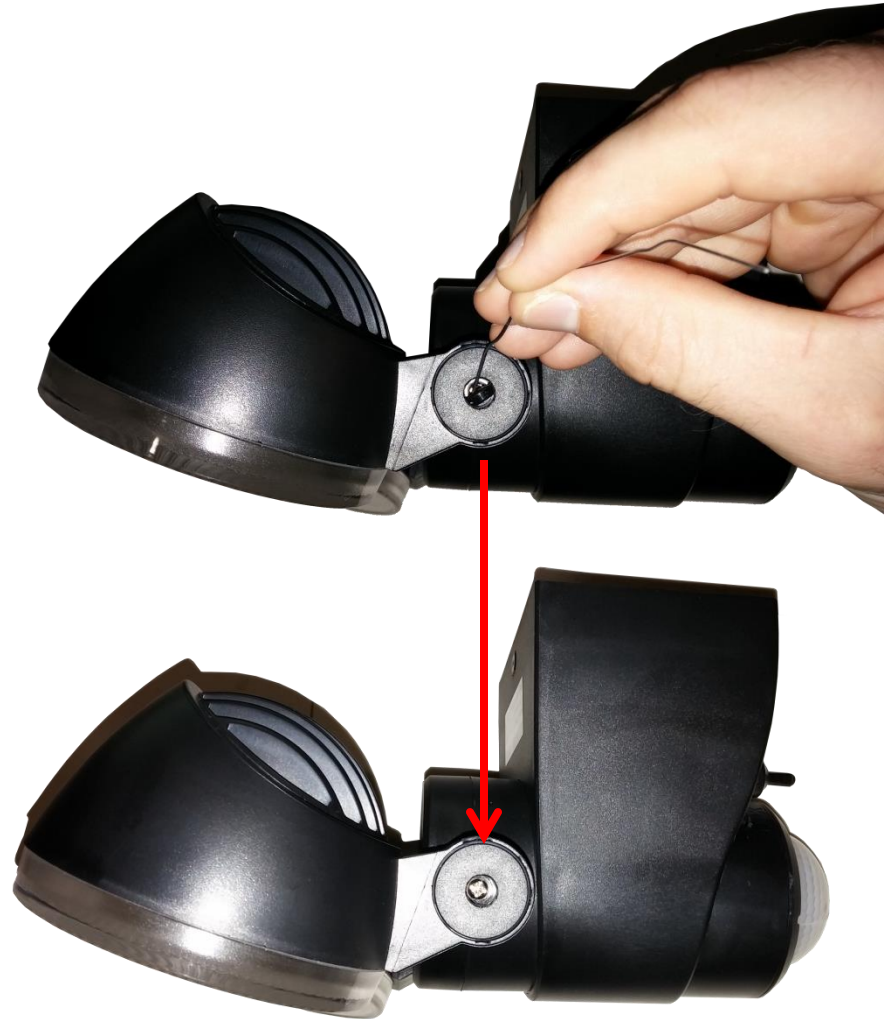


Lay the product on its side with the loose head on top as shown in the picture. Located the screw head cover, shown here in the red circle. This is a small rubber cover that prevents moisture from getting to the top of the screw and causing rust.



Unfold a paperclip and use the end to poke the edge of the rubber cover. Carefully slide the end of the paperclip past the rubber cover.

Then, press the paperclip against the rubber cover and pull the paperclip out. This should bring the cover with it. You now have access to the head of the screw.



### To Make it Tighter

Use a Phillips-head screwdriver to turn the screw in a clockwise motion. Check the head to see how it rotates and continue to tighten until you reach the desired point.

### To Make it Looser

Use a Phillips-head screwdriver to turn the screw in a counter-clockwise motion. Check the head to see how it rotates and continue to loosen until you reach the desired point.

