



Mastercool[®] Inc.

"World Class Quality"

REFRIGERANT RECOVERY

CE



MADE IN USA

69000 REFRIGERANT RECOVERY SYSTEM

SPECIFICATIONS:

- 1/2 HP oil-less compressor
- Recovery Rate:
 - direct vapor up to 3/4 lb/m
 - direct liquid up to 2 1/2 lb/m
 - push-pull up to 12 lb/m
- Operating Temperature Range: 32 to 122°F
- Weight: 38 lbs / Dimensions: 17" L x 10" W x 12" H
- Refrigerants: CFC's, HCFC's, HFC's

FEATURES:

- High performance oil-less compressor
- High volume cooling fan design
- Automatic low pressure Cut-Off Switch
- Liquid compatible head-valve system
- Safety high pressure Cut-Off Switch
- Fully reinforced hard plastic casing

The professional recovery systems are compact, lightweight and work with all refrigerants. They're ideal for commercial, residential or industrial appliance applications. Our recovery systems offer a state-of-the-art 1/2 HP oil-less compressor with a built-in high volume cooling fan. This new innovative design delivers maximum cooling efficiency which keeps the compressor working at high capacities in even the hottest climates. The compressor is also protected by an automatic low pressure cut-off switch that shuts off the unit once the recovery is complete. This AUTO SHUT-OFF feature eliminates the risk of compressor failure and reduces the user's need to monitor the entire recovery system. All of our recovery systems offer our newest color-coded gauges with pressure readings in PSI, BAR and MPa. Our stainless steel ball valve designed manifold controls the flow smoothly and quickly with only a 1/4 turn. With all of this protected by a reinforced hard plastic case, Mastercool's recovery systems will meet all your refrigerant recovery needs.

CE



MADE IN USA

69100 COMPLETE A/C RECOVERY SYSTEM

SPECIFICATIONS:

- 69100: 115V – 60Hz / 69100-220: 220V – 50/60 Hz
- 1/2 HP Oil-less Compressor
- Recovery Rate:
 - direct vapor up to: 3/4 lb/m / .5 kg/m
 - direct liquid up to: 2 1/2 lb/m / 1.4 kg/m
 - push-pull up to: 12 lb/m / 5.5 kg/m
- Operating Temperature Range: 32-122°F (0 to 50°C)
- Refrigerants: All
- Weight: 38 lbs / Dimensions: 17" L x 10" W x 12" H (432mm x 254mm x 305mm)

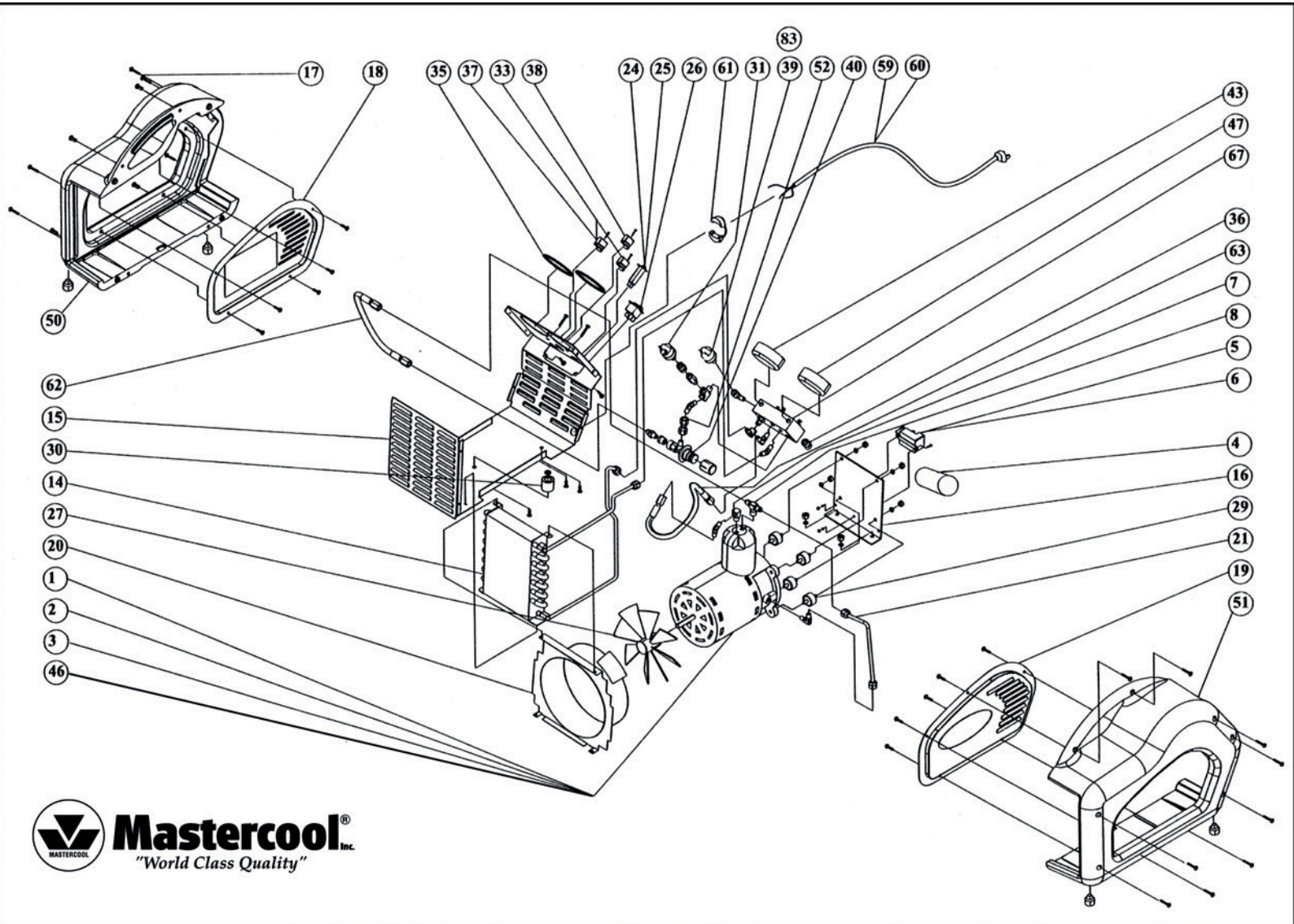
FEATURES:

- High performance oil-less compressor
- High volume cooling fan design
- Automatic low pressure Cut-Off Switch
- Liquid compatible head-valve system
- Safety high pressure Cut-Off Switch
- Fully reinforced hard plastic casing

The 69100 Professional Recovery System is compact, lightweight and works with all refrigerants. It offers a state of the art 1/2 hp oil-less compressor with a built-in high volume cooling fan. This innovative design delivers maximum cooling efficiency which keeps the compressor working at high capacities in even the warmest climates. The compressor is protected by an automatic low Pressure cut-off switch that shuts off the unit once the recovery is complete. This auto shut-off feature eliminates the risk of compressor failure and reduces the user's need to monitor the entire recovery process. The 69100 also includes an oil separator and filter dryer to cleanse the refrigerant during the recovery process. The Mastercool Recovery System offers our newest color-coded gauges with pressure readings in PSI, BAR and MPa. The stainless steel ball valve designed manifold controls the refrigerant flow smoothly and quickly with only a 1/4 turn. All of the internal components have been arranged and isolated to ensure a smooth and quiet performance. With all of this protected by a reinforced hard plastic case, Mastercool's Recovery System will meet all of your refrigerant needs.

Bill of Material 69000 Recovery Machine

1	69000-001	100V oilless compressor with capacitor, relay, jumper
2	69000-001-220	220V 50/60hz oilless compressor with capacitor and relay
3	69000-001A	115V/60hz oilless compressor with extended shaft
4	69000-001B	Capacitor 100V / 233-280 MFD
5	69000-001C-110	Relay with jumper cable 110V
6	69000-001C-220	Relay with jumper cable 220V
7	69000-001D	90 degree brass flare fitting - 1/4" MPT x 1/8" FPT
8	69000-001E	"T" 2 way male branch 1/4" NPT
15	69000-002MF	Metal main frame for 69000-TAS
16	69000-002MTB	Mounting bracket with screw
17	69000-002SCRW	Enclosure screws for assembly
18	69000-002SDL	Left side metal frame
19	69000-002SDR	Right side metal frame
20	69000-002SHRD	Shroud assembly
21	69000-002TUB	Compressor copper tubing - 90 degrees 6"
24	69000-004	Circuit Breaker - 15 amps/100V
25	69000-004-220	Circuit Breaker - 6 amps/220V
26	69000-005	ON/OFF switch 2 pole/single throw
27	69000-006A	Fan 7" diameter
29	69000-007	Vibration mount rubber
30	69000-008	Compressor motor rubber foot mount
31	69000-009	Vacuum shut-off switch
33	69000-010-BKN	Blue knob with screw
35	69000-010-GP	Gauge protector
36	69000-010-INFT	Inlet filter fitting
37	69000-010-RKN	Red knob with screw
38	69000-010-YKN	Yellow knob with screw
39	69000-013-TAS	Manual re-start button
40	6533-01A	Float switch cable
43	69000-H	High side gauge for refrigerant recovery unit 100V
46	69000-001-J	95-100V 50/60hz oilless compressor with capacitor
47	69000-L	Low side gauge for refrigerant recovery unit / 100V
50	69000-PBLB	Plastic enclosure left side blue
51	69000-PBRB	Plastic enclosure right side blue
52	69000-017	Safety Valve
59	6534-01	6 foot power cord - no outer jacket
60	6534-02-220	8 foot power cord/220V/schuko plug - 3" outerjacket with connection
61	90060-48	Heyco strain relief
67	FTBLOCK-R	Revised with FT check valve
83	69000-013	HP Shut-Off Switch



Looking for automotive a/c tools & equipment? Visit our website.