

## Recommended Tools

Air or Hand Ratchet



7/16" Socket



7/16" Combo Wrench



Torque Wrench



## Hardware



1/4-20 x 1-1/4  
Hex Head Screw  
Grade 5



1/4-20  
E-Stop Nut



Spacer



## MANUAL RACK

025522KP

## ATTACHING MANUAL RACK to 12" DEEP MODULE

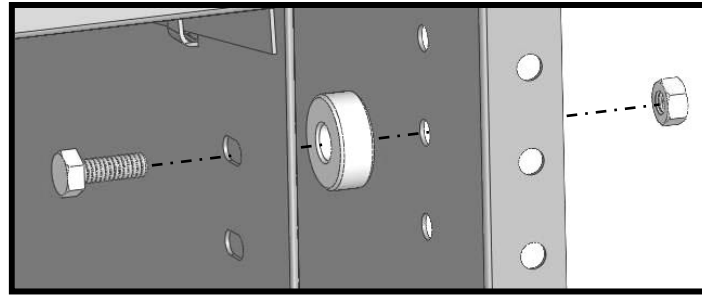
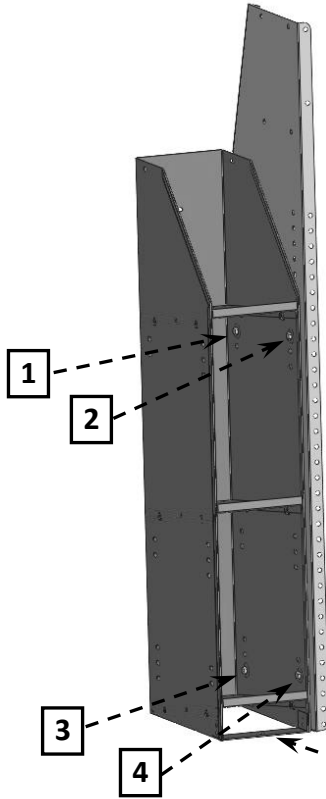


Secure Manual Rack to Shelving Module as shown using;

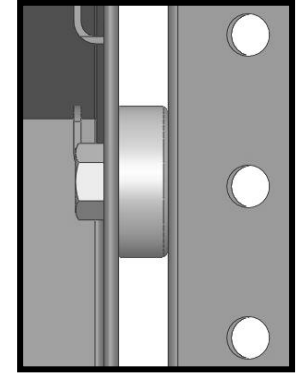
- (4) 1/4-20 x 1-1/4 Hex Head Screws Grd 5
- (4) Spacers
- (4) 1/4-E-Stop Nuts

**TORQUE SETTING:**

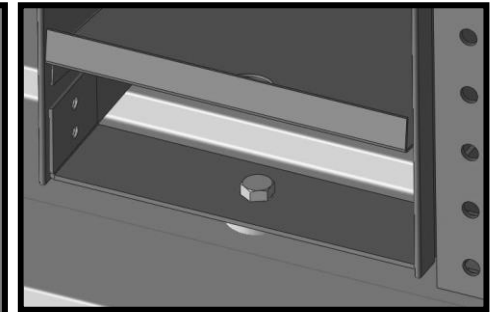
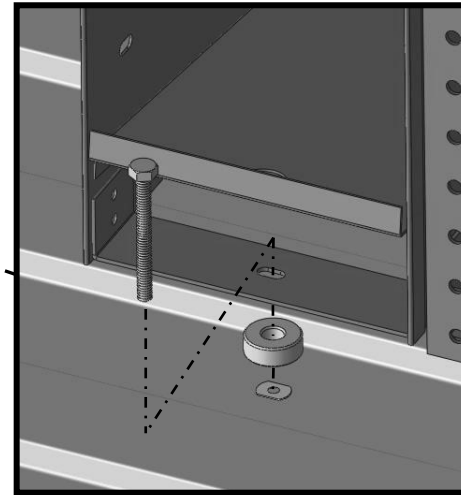
Size - 1/4 = 7 - 9.5 Ft.-Lbs.



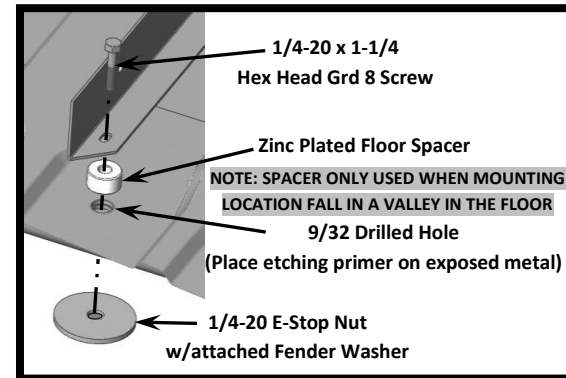
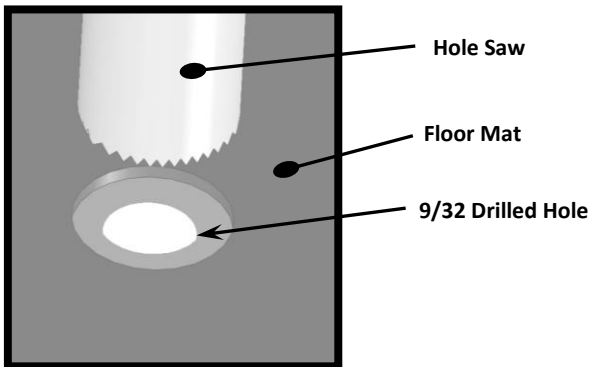
@ EACH OF THE (4) MOUNTING LOCATIONS



**OPTIONAL ON 12" WIDE MODULES**

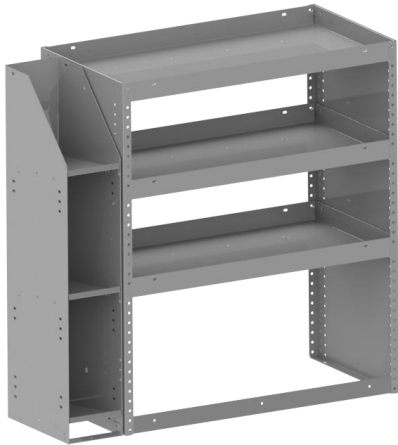


Position Manual Rack and mark to install Plusnut (SEE PAGE 4), and secure using:  
(1) 1/4-20 x 2-1/2 HWH Screw Grd 8  
(1) Spacer (IF LOCATION FALLS IN VALLEY OF FLOOR)



**MOUNTING THROUGH FLOOR**

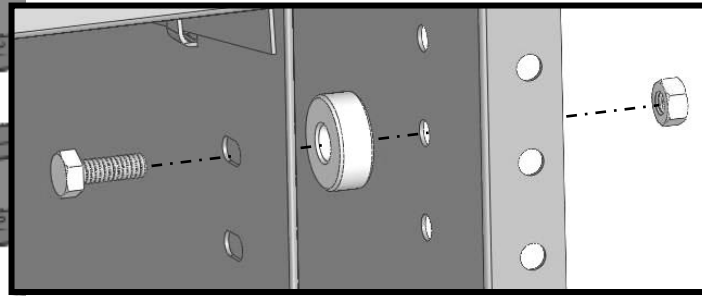
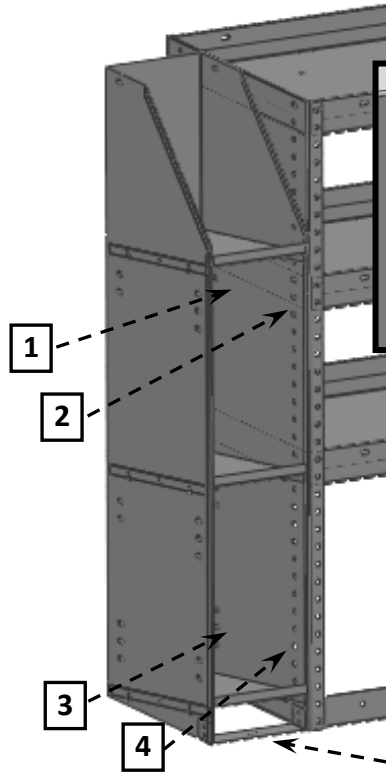
## ATTACHING MANUAL RACK to 16" DEEP MODULE



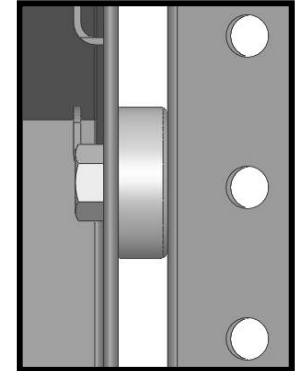
Secure Manual Rack to Shelving Module as shown using;

- (4) 1/4-20 x 1-1/4 Hex Head Screws Grd 5
- (4) Spacers
- (4) 1/4-E-Stop Nuts

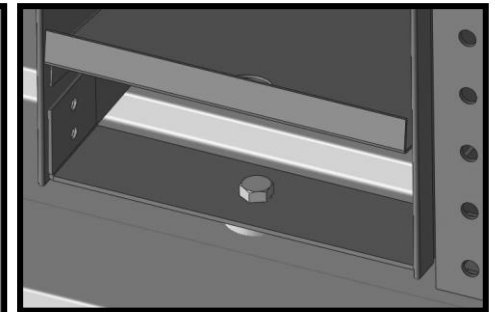
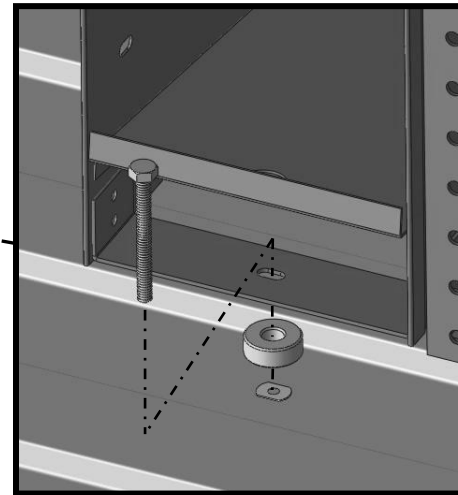
**TORQUE SETTING:**  
Size - 1/4 = 7 - 9.5 Ft.-Lbs.



@ EACH OF THE (4) MOUNTING LOCATIONS



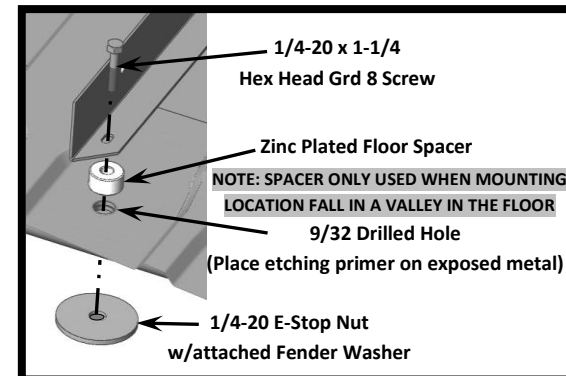
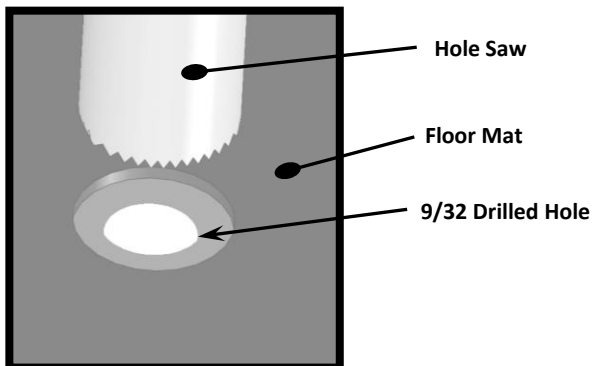
### OPTIONAL ON 16" WIDE MODULES



Position Manual Rack and mark to install Plusnut (SEE PAGE 4), and secure using:

- (1) 1/4-20 x 2-1/2 HWH Screw Grd 8
- (1) Spacer (IF LOCATION FALLS IN VALLEY OF FLOOR)

**NOTE: Based on the location of the manual rack, drilling of mounting holes may be required.**

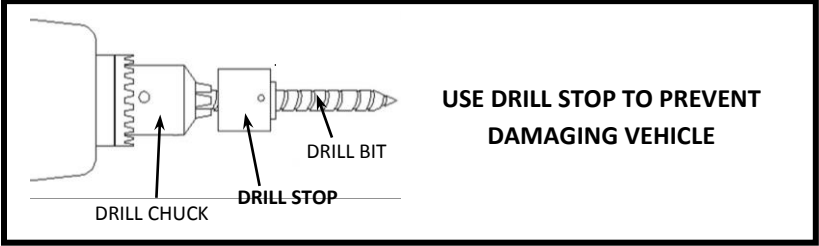


### MOUNTING THROUGH FLOOR

**BEFORE DRILLING**

**STOP**      **STOP**

**CHECK ALL MOUNTING LOCATIONS TO PREVENT PENETRATING  
GAS LINES, GAS TANKS, BRAKE LINES, WIRING OR ANY OTHER STRUCTURE OF VEHICLE**



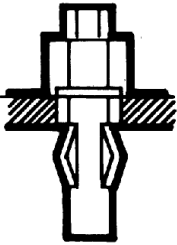
The Plusnut® is pre-bulbed for easy installation

1



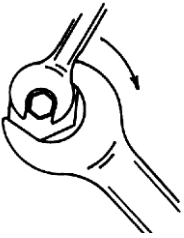
The Plusnut® is pre-assembled with hex cap and hex bolt.  
Then it is inserted into a pre-drilled hole

2



As the bolt is tightened, the Plusnut® upsets  
and provides outstanding  
blind fastening holding power

3



C-500 tool tightens bolt thru hex head cap into Plusnut® A  
ratchet, open-end or closed –end wrench can be used.

4



Fully upset Plusnut® provides  
a reliable nut plate for fastening.

5