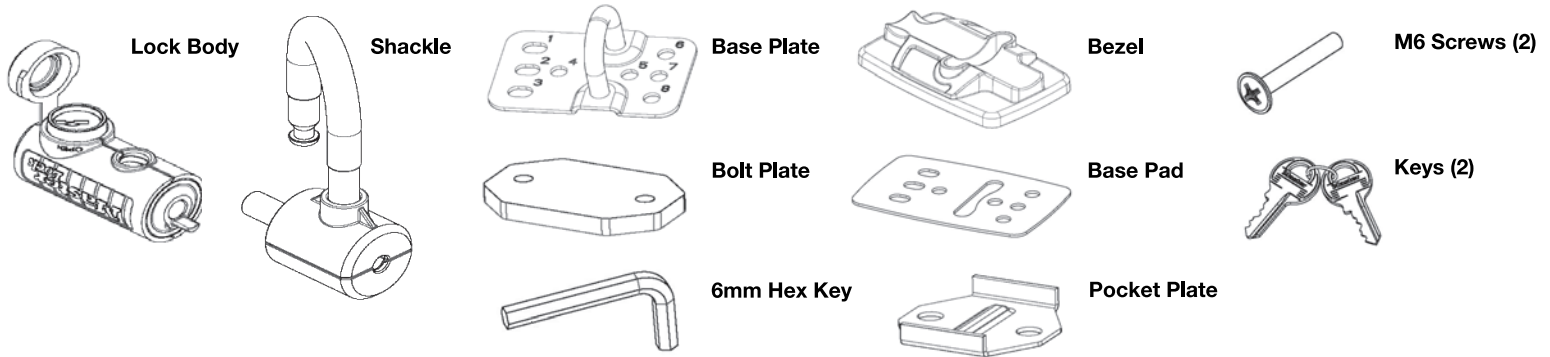


### Parts Included:

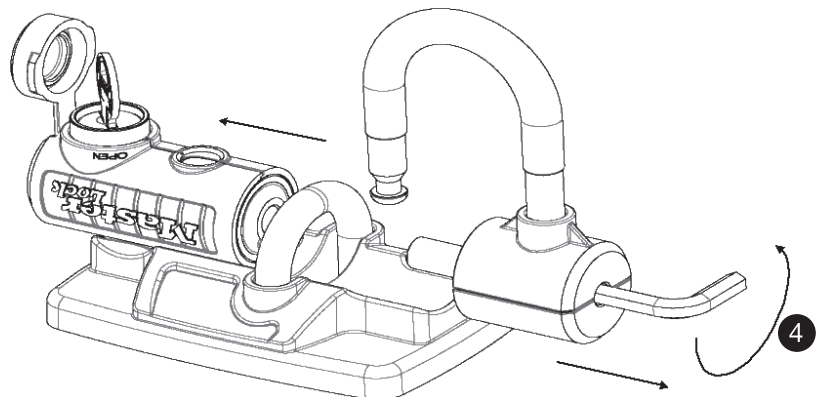
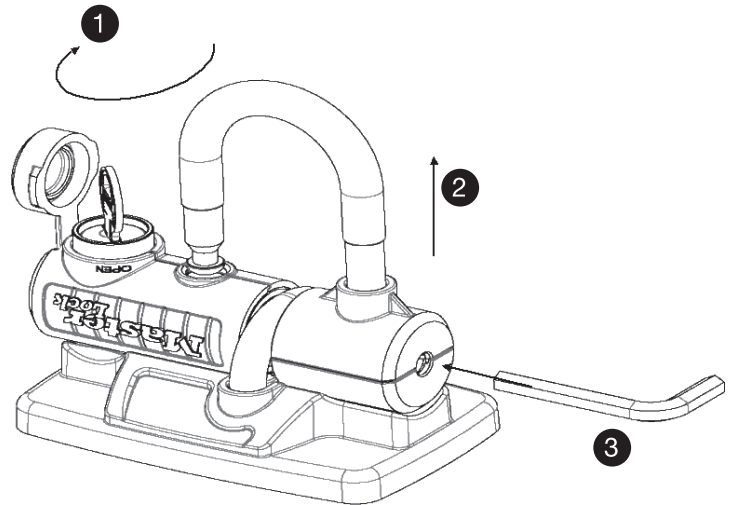


### Lock Assembly:

#### INSTRUCTIONS

*Before any type of installation, remove the lock from the base plate assembly.*

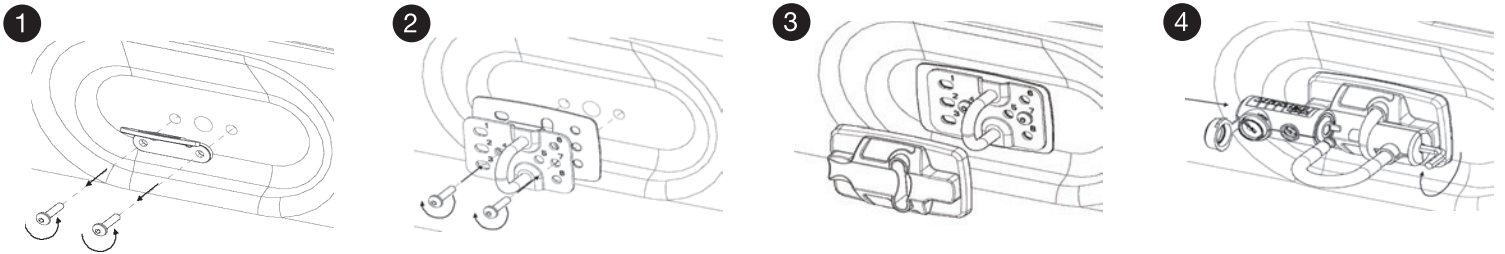
1. Unlock
2. Pull shackle up
3. Insert 6mm Hex key
4. Loosen bolt
5. Remove shackle from lock body



### Truck Bed Tie Downs:

Note: The location and orientation of the existing loops will vary by make, model and year of truck. The lock may not fit all locations and additional trimming may be required if the truck has a bed liner. The tools needed to remove the existing loop may also vary and are not included. See the application guide below for make/model/year specific detail.

### Ford F-series, Toyota, Dodge Ram:



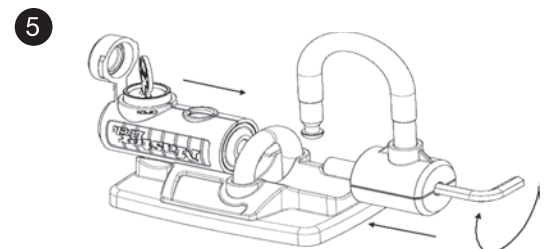
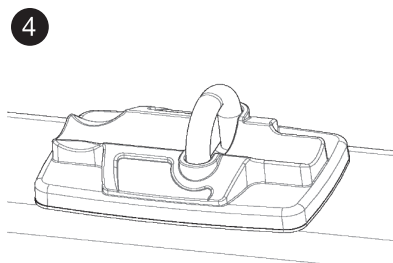
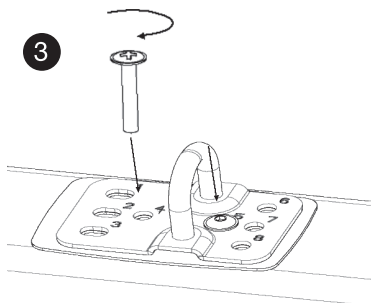
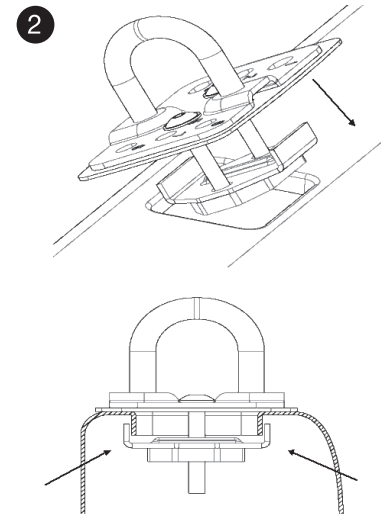
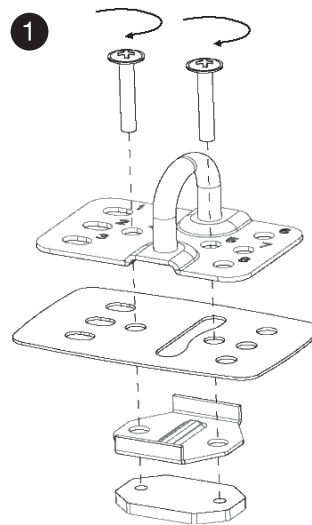
#### **INSTRUCTIONS**

1. Take off the existing loop
2. Match the holes in the BASE PLATE to the existing truck holes and then attach BASE PLATE with the BASE PAD using the original loop bolts
3. Add the BEZEL
4. Assemble the lock in reverse order as shown in "Lock Assembly"

### Stake Holes (all models):

#### INSTRUCTIONS

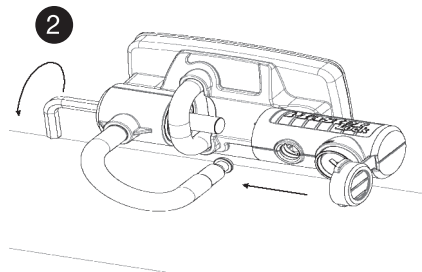
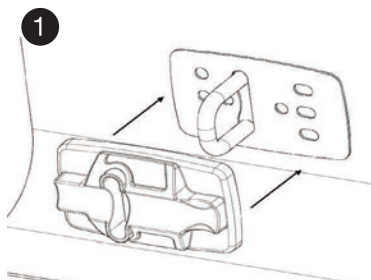
1. Assemble the parts as shown below
2. Install it into the pocket
3. Tighten the screws with a Phillips head screwdriver
4. Add the BEZEL and BASE PAD
5. Assemble the lock in reverse order shown in "Lock Assembly"



### *Dodge Big Horn Edition:*

#### **INSTRUCTIONS**

1. Add the BEZEL to truck's existing loop
2. Assemble the lock in reverse order as shown in "Lock Assembly"



### *GM/Chevy 2500, 3500:*

#### **INSTRUCTIONS**

1. Assemble the lock to truck's existing loop

