

Axis[™] Load Extender



Installation & Loading Instructions - Please Read Before Beginning ***Veillez lire les instructions avant d'entreprendre l'installation et le chargement***

IMPORTANT WARNING: All vehicular transports are potentially hazardous. Any person(s) using Malone products are personally responsible for following the given directions for use and/or installation and accepts full responsibility for any and all damages or injury of any kind including death, which may result from their use and/or installation.

It is critical that all Malone racks and accessories be properly and securely attached to your vehicle. Improper attachment could result in a serious accident, and could cause serious bodily injury or death to you or to others. You are responsible for securing the racks and accessories to your car, checking the attachment's prior to use, and periodically inspecting the products for adjustment, wear, and damage.

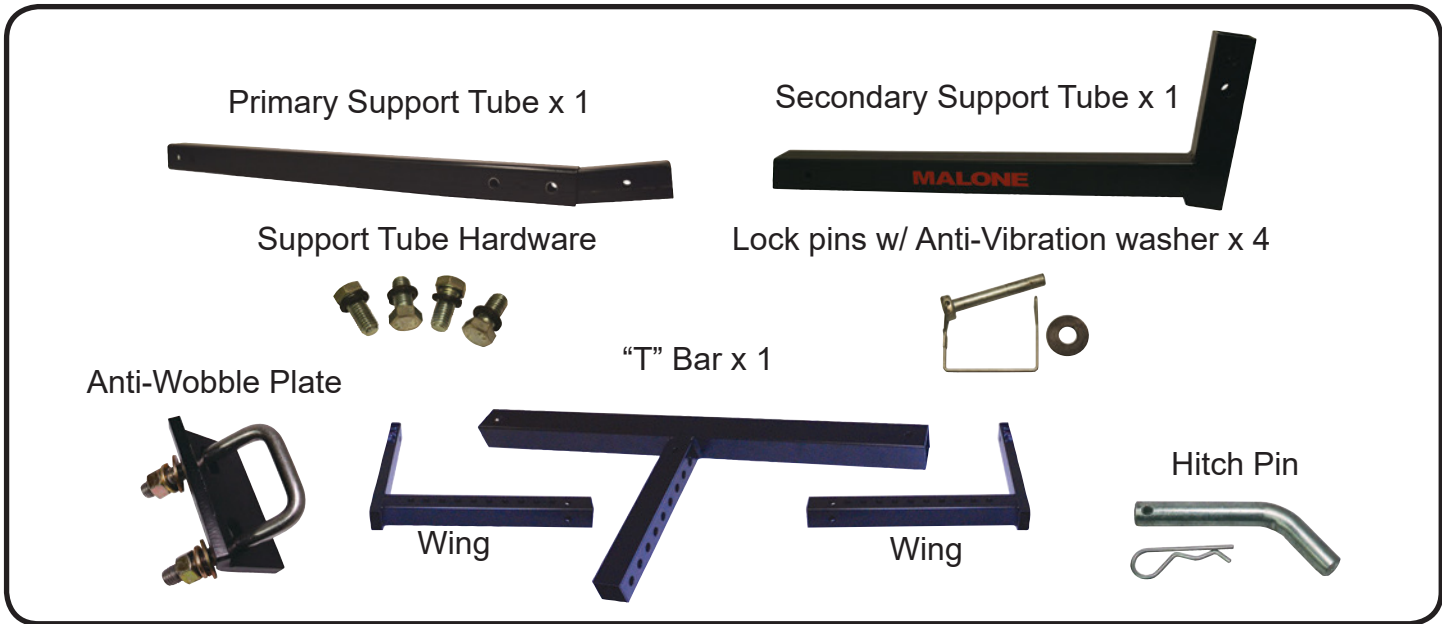
You must read and understand all of the instructions and cautions supplied with your Malone products(s) prior to installation or use. If you do not understand all of the instructions and cautions, or, if you have no mechanical experience and are not thoroughly familiar with the installation procedures, you should have the product installed by a professional installer.

MALONE

CHANGING THE WAY YOU GET THERE

Axis™

Load Extender



Installation & Loading Instructions - Please Read Before Beginning
Veillez lire les instructions avant d'entreprendre l'installation et le chargement

INSTALL - HORIZONTAL

1. Insert the primary support tube into receiver, insert hitch pin. See image 1.



2. Insert the secondary support tube in to the primary tube. Secure with the Support Tube Hardware and Lock Pin. See image 2.

3. Insert the T bar in to secondary support tube, secure in place with lock pin. See image 3.



4. Insert the wings into T bar, secure in place with (2) lock pins. See image 4



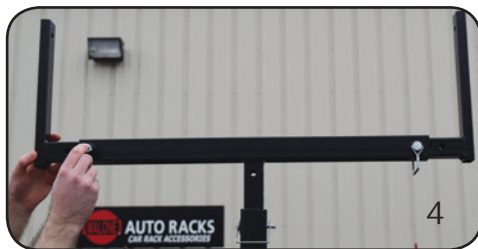
INSTALL - VERTICAL

1. Insert secondary support tube into the receiver or extension (if needed). Insert hitch pin.
NOTE: Some vehicles may require an Insert extension (not included) for the receiver.
See image 1.



2. Insert the primary support tube into the secondary support tube and secure with the Support Tube Hardware and Lock Pin. See image 2.

3. Insert the T bar into the primary support tube, secure in place with lock pin. See image 3.



4. Insert the wings into bar, secure in place with (2) pins. See image 4.

INSTALLING THE ANTI-WOBBLE PLATE

The Anti-Wobble plate can be installed from the top or the bottom as needed, depending on hitch installation and available room.



IMPORTANT SAFETY INFORMATION

Caution -Check local and state laws before using Hitch Rack .

1. The safety and instruction manual should always accompany this product and be kept with it when it is transferred or loaned to another person.
2. Do not use product when vehicle is not loaded.
3. Use only during daylight hours not in dark or low light conditions.
4. Do not use with loads extending more than 6 feet beyond dropped tailgate.
5. Set elevation of T-bar to same level as truck bed or vehicle roof height.
6. Loads carried in trucks must be placed against the front of the truck bed, tied and centered above T-bar to prevent load from bouncing or sliding.
7. Attach safety flag to the end of the load.
8. Do not block tail lights, brake lights, or turn signals.
9. Check local and state laws before using product.
10. Secure all pins and clips.
11. Do not cut-drill-weld-or modify product.
12. Always install T-bar with reflective tape facing away from vehicle.
13. For vehicles that have a common passenger and cargo compartment, such as SUV's, CUV's and vans, do not use product in horizontal position when vehicle is running to prevent exhaust gases from entering passenger areas.