



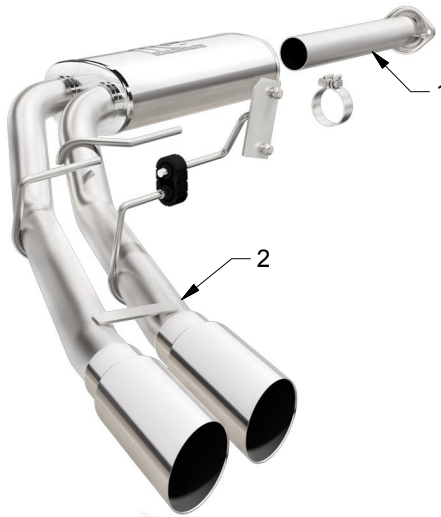
# INSTALLATION INSTRUCTIONS



2015 FORD F-150 2.7/3.5/5.0L

PART NO. 19054

## BILL OF MATERIALS:



- 1. INLET PIPE ASSEMBLY
- 2. TAIL PIPE MUFFLER ASSY



WEAR SAFETY  
GLASSES



READ INSTRUCTIONS  
THOROUGHLY BEFORE  
INSTALLING PRODUCT

## SHOP SUPPLIES:



SPRAY LUBRICANT

To ease removal of existing [exhaust components](#) (especially on older vehicles) spray penetrating lubricant on all fasteners and hangers/insulators that will be loosened or removed and let soak before disassembly.

## HARDWARE KIT:

- 1. [1] HANGER BRACKET
- 2. [2] U-TYPE PANEL NUT
- 3. [2] M8-1.25 X 25mm BOLT
- 4. [2] M10-1.50 NUT
- 5. [2] M10 WASHER
- 6. [1] 3.00" TORCA CLAMP
- 7. [1] HANGER RUBBER

## MINIMUM REQUIRED TOOLS:



15mm  
13mm



Hanger Tool  
(Or Pry Bar)

## MAGNAFLOW RECOMMENDS PROFESSIONAL INSTALLATION ON ALL THEIR PRODUCTS



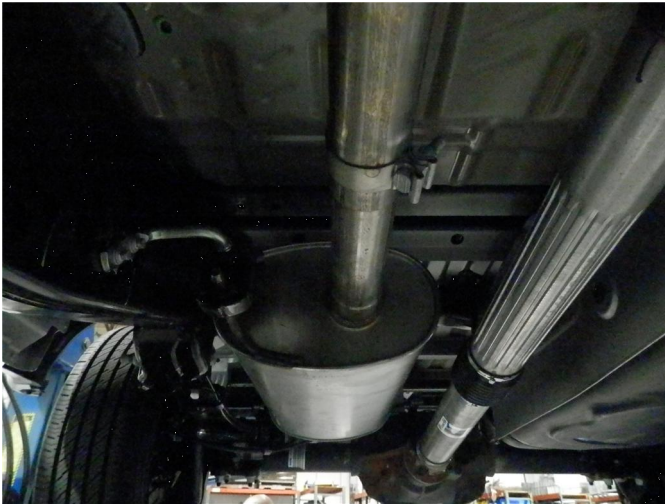
**WARNING:** When working on, under, or around any vehicle exercise caution. Please allow the vehicle's exhaust system to cool before removal, as exhaust system temperatures may cause severe burns. If working without a lift always consult vehicle manual for correct lifting specifications. Always wear safety glasses and ensure a safe work area. Serious injury or death could occur if safety measures are not followed.

**ATTENTION:** Always install any supplied band or U-bolt clamps to the proper torque specifications of 40-45 ft-lbs for band clamps and 30-35 ft-lbs for U-bolt clamps. Over tightening will result in the clamp breaking and will NOT be warranted by MagnaFlow.

## INSTALLATION INSTRUCTIONS

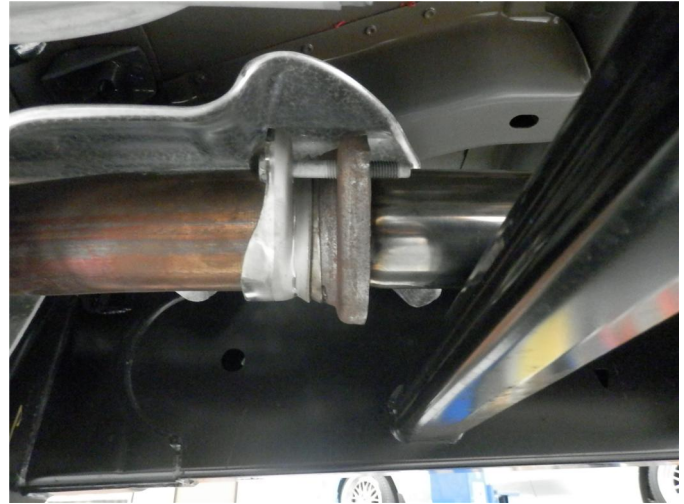


**Step 1.** To remove the OEM exhaust system, you will first need to unbolt the muffler assembly from the flange junction as shown.



**Step 2.** Unbolt the clamp just behind the muffler. Disengage the welded hangers from the rubber insulators. Remove the OEM exhaust system. Do not damage or discard the OEM fasteners or rubber insulators, as they will be reused to mount the new system.

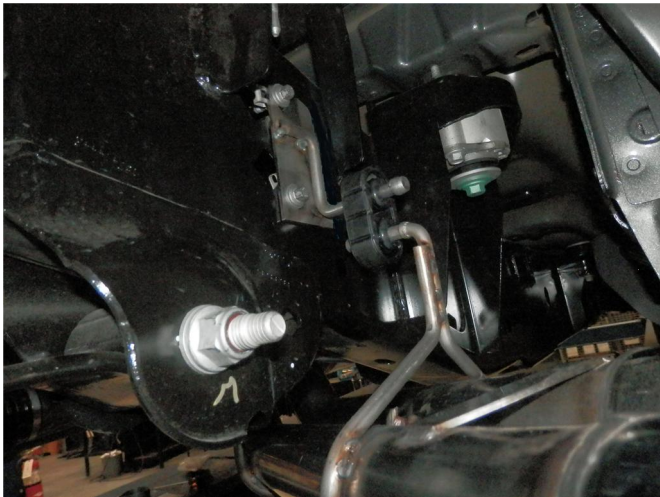
**Step 3.** You are now ready to install your new MAGNAFLOW exhaust system. Begin by loosely bolting the inlet flange of the Inlet Pipe Assembly to the OEM flange junction using the OEM bolts and the supplied nuts and washers.



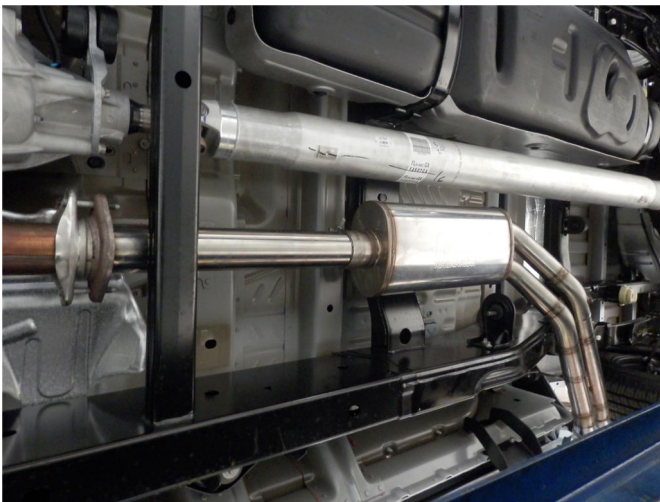
**Step 4.** Before installing the Muffler Assembly there is an OEM rubber insulator assembly bolted to the subframe that may need to be removed before installing the Muffler Assembly. If your vehicles engine is 2.7L or 3.5L you will need to remove the rubber insulator assembly. If you have the 5.0L leave the rubber insulator intact.







**Step 5.** Locate the two square holes in the passengers side of the vehicles subframe. Attach the two supplied U-type panel nuts as shown in the diagram. Loosely bolt the supplied Hanger Bracket Assembly to the panel nuts using the supplied bolts.



**Step 6.** Install the Muffler Assembly and loosely secure using the supplied 3.00" clamp. Attach the Hanger Bracket Assembly to the welded hanger using the supplied rubber insulator.



**Step 7.** Once a final position has been chosen for the new exhaust system, evenly tighten all clamps from front to rear using the torque specifications on page one of the instructions. Inspect all fasteners after 25-50 miles of operation and re-tighten if necessary.