

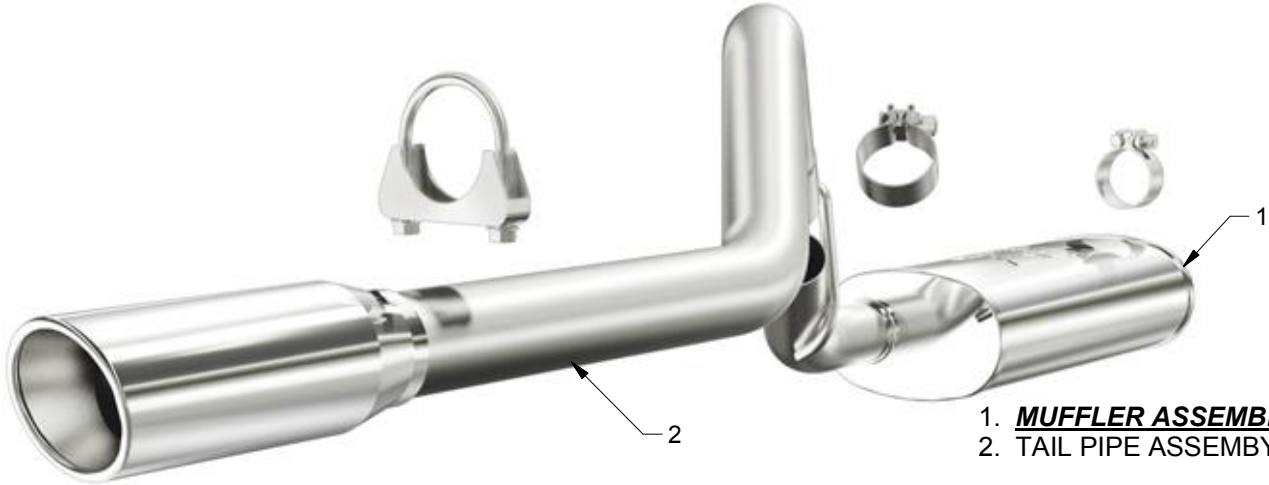


INSTALLATION INSTRUCTIONS



1/20/00 - '01 Jeep Cherokee 4.0L | PART NO. 16464

BILL OF MATERIALS:



1. **MUFFLER ASSEMBLY.**
2. **TAIL PIPE ASSEMBLY.**



WEAR SAFETY
GLASSES



READ INSTRUCTIONS
THOROUGHLY BEFORE
INSTALLING PRODUCT



SPRAY LUBRICANT

To ease removal of existing exhaust components (especially on older vehicles) spray penetrating lubricant on all fasteners and hangers/insulators that will be loosened or removed and let soak before disassembly.

HARDWARE KIT:

1. [2] 2.50" Clamps
2. [1] 2.50" U-Bolt Clamp Assy.

MINIMUM REQUIRED TOOLS:



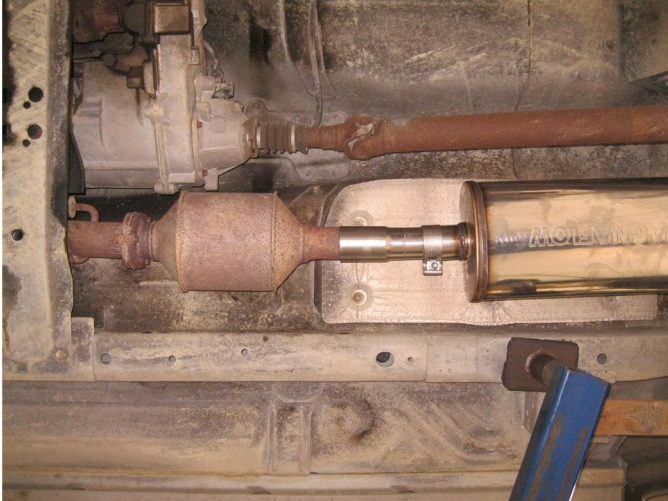
15mm



Hanger Tool
(Or Pry Bar)

INSTALLATION INSTRUCTIONS

Step 1. To remove the OEM exhaust system you will need to cut the tail pipe just behind the muffler. You can then remove the OEM clamp fastening the muffler to the catalytic converter. Disengage the welded hangers from the rubber isolators, they will be reused to install your new MAGNAFLOW system.



Step 2. Install the new system by attaching the new muffler assembly to the catalytic converter using the supplied 2.50" clamp and by locating the welded hanger to the rubber isolator. Be sure to align the locating notch in the muffler pipe with the indexing peg on the OEM system. Leave all clamps and fasteners loose for final adjustment of complete system.



Step 3. Loosely attach the Tail Pipe Assembly using the supplied 2.50" clamp.



Step 4. Loosely secure the tip section of the Tail Pipe Assembly to the OEM hanger using the supplied 2.50" U-Bolt clamp.



Step 5. Once a final position has been chosen for the new exhaust system, evenly tighten all clamps from front to rear using the torque specifications on page one of the instructions. Inspect all fasteners after 25-50 miles of operation and re-tighten if necessary.