

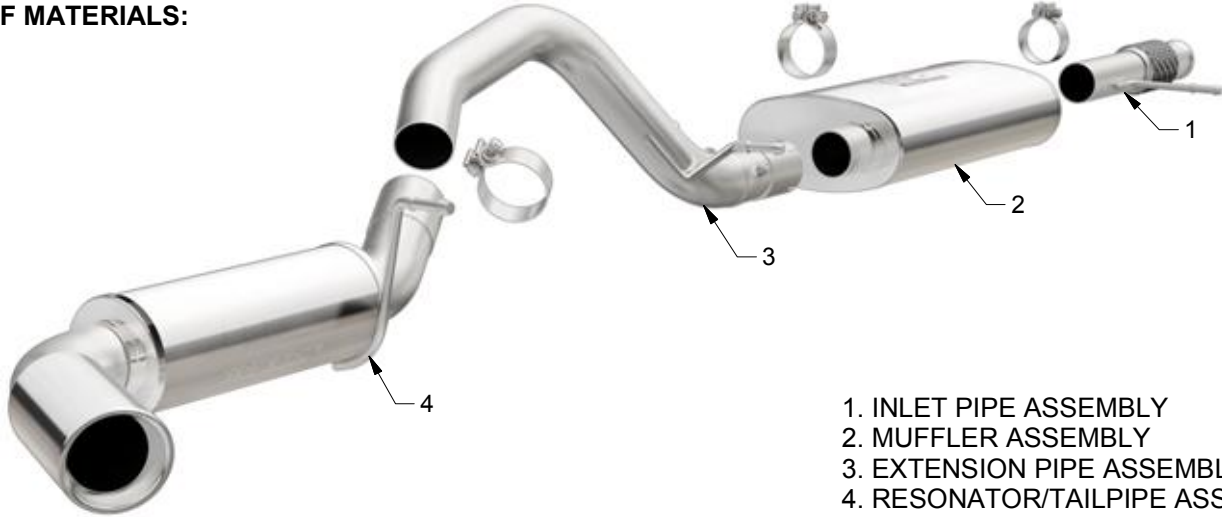


# INSTALLATION INSTRUCTIONS



2015 CHEVY TAHOE/GMC YUKON 5.3L | PART NO. 15355

## BILL OF MATERIALS:



- 1. INLET PIPE ASSEMBLY
- 2. MUFFLER ASSEMBLY
- 3. EXTENSION PIPE ASSEMBLY
- 4. RESONATOR/TAILOPIPE ASSEMBLY



WEAR SAFETY  
GLASSES



READ INSTRUCTIONS  
THOROUGHLY BEFORE  
INSTALLING PRODUCT

## SHOP SUPPLIES:



SPRAY LUBRICANT

To ease removal of existing exhaust components (especially on older vehicles) spray penetrating lubricant on all fasteners and hangers/insulators that will be loosened or removed and let soak before disassembly.

## HARDWARE KIT:

- 1.[3] 3.00" Clamp

## MINIMUM REQUIRED TOOLS:



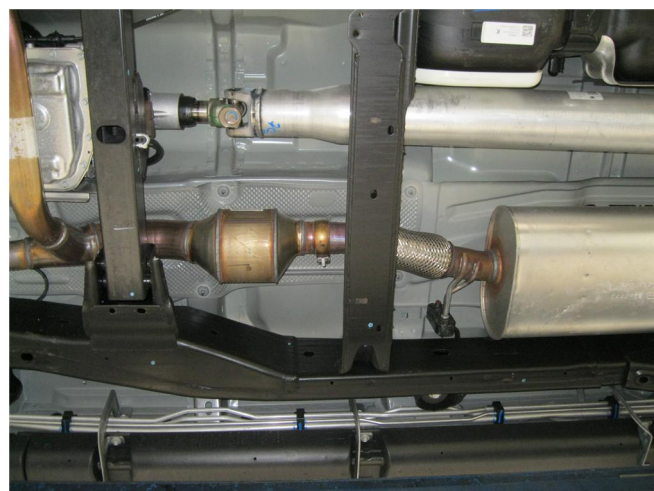
13mm  
15mm



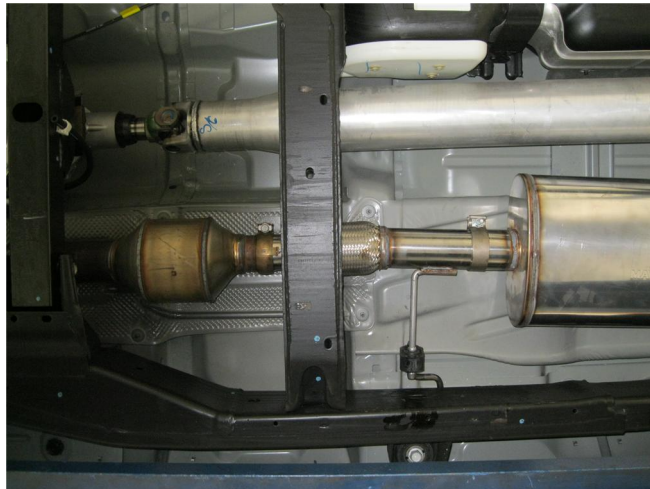
Hanger Tool  
(Or Pry Bar)



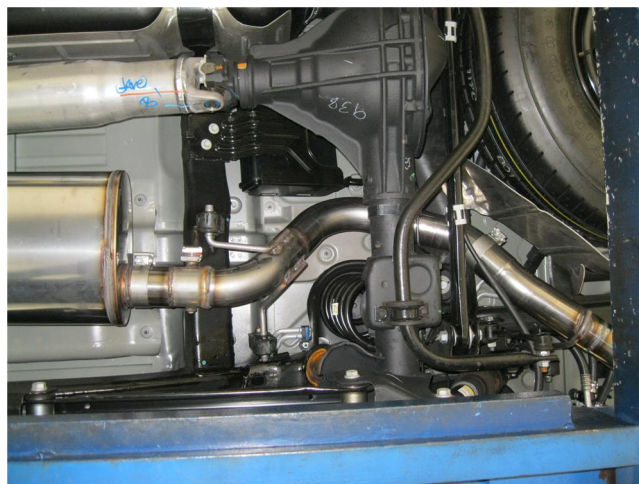
Sawzall or other  
cutting device.



**Step 1.** To remove the OEM exhaust system, you will first need to cut the pipe behind the muffler before it goes over the axle. You can then disengage the welded hangers from the rubber insulators and remove the tailpipe. Unfasten the muffler inlet from the catalytic converter at the clamp junction. Do not damage or discard the OEM fasteners or rubber insulators, as they will be reused to mount the new system. Disengage the muffler hangers and remove it from the vehicle.



**Step 2.** Begin installation of the new system by attaching Inlet Pipe Assembly at the ball flare using the OEM clamp and fitting the hanger into the rubber insulator. Next attach the muffler to the inlet pipe using a supplied 3.00" clamp. Leave all clamps loose for final adjustment of the complete system.



**Step 3.** Complete the initial installation by attaching the Extension Pipe Assembly (containing the exhaust valve) to the Muffler and the Resonator/Tailpipe Assembly the Extension Pipe using the supplied 3.00" clamps.



**Step 4.** Once a final position has been chosen for the new exhaust system, evenly tighten all clamps from front to rear using the torque specifications on page one of the instructions. Inspect all fasteners after 25-50 miles of operation and re-tighten if necessary.