

## INSTALLATION INSTRUCTIONS AND PARTS LIST

VEHICLE APPLICATION: MODEL 251440 (12.00" X 20.00") AND 251443 (12.00" X 23.00")  
2014 AND NEWER GM PICKUPS

1. READ INSTRUCTIONS COMPLETELY AND CHECK TO MAKE SURE THAT ALL REQUIRED PARTS (LISTED ON SERVICE PARTS LIST) ARE ON HAND BEFORE STARTING THE INSTALLATION.

### **MOUNTING FRONT SPLASH GUARDS ON SILVERADO & SIERRA:** (SEE SHEET #2)

2. INSTALL THE SPLASH GUARDS AS FOLLOWS:
  - 2.1 REMOVE TWO FACTORY SCREWS THAT HOLD THE PLASTIC GUARD IN PLACE. **(THESE SCREWS ARE NOT REUSED, BUT THE PLASTIC GUARD WILL REMAIN).**
  - 2.2 POSITION THE SPLASH GUARD AGAINST THE WHEEL WELL FLANGE AND INSTALL TWO HEX HEAD SEMS SCREWS WITH FENDER WASHERS (ITEMS #5,7) THRU THE TWO LOWER HOLES AS SHOWN IN FIG. 1. AND TIGHTEN DOWN.
  - 2.3 WITH THE SPLASHGUARD LEVELED AND TIGHTENED, DRILL A 3/16" HOLE THROUGH THE WHEEL WELL FLANGE AND INSTALL THE 1/4" SELF TAPPING SCREW AND FENDER WASHER (ITEMS #6,7) DO NOT OVER TIGHTEN THIS SCREW.
  - 2.4 REPEAT FOR OPPOSITE SIDE

### **MOUNTING REAR SPLASH GUARDS ON CHEVROLET SILVERADO:** (SEE SHEET #3)

3. INSTALL THE SPLASH GUARDS AS FOLLOWS:
  - 3.1 REMOVE TWO FACTORY SCREWS THAT HOLD THE PLASTIC GUARD IN PLACE. **(THESE SCREWS ARE NOT REUSED, BUT THE PLASTIC GUARD WILL REMAIN).**
  - 3.2 POSITION THE SPLASH GUARD AGAINST THE WHEEL WELL FLANGE AND INSTALL TWO HEX HEAD SEMS SCREWS WITH FENDER WASHERS (ITEMS #5,7) THRU THE TWO LOWER HOLES AS SHOWN IN FIG. 2. AND TIGHTEN DOWN.
  - 3.3 WITH THE SPLASHGUARD LEVELED AND TIGHTENED, DRILL A 3/16" HOLE THROUGH THE WHEEL WELL FLANGE AND INSTALL THE 1/4" SELF TAPPING SCREW AND FENDER WASHER (ITEMS #6,7) DO NOT OVER TIGHTEN THIS SCREW.
  - 3.4 REPEAT FOR OPPOSITE SIDE.

### **MOUNTING REAR SPLASH GUARDS ON GMC SIERRA:** (SEE SHEET #4)

4. INSTALL THE SPLASH GUARDS AS FOLLOWS:
  - 4.1 CUT OUT THE DRILLING TEMPLATES ON SHEET # 5 FOR THE LOWER (2) HOLES AND TAPE TO THE WHEEL WELL MOLDING, LINING UP THE OUTER AND LOWER EDGES. DRILL (2) 1/8" DIA. HOLES TO ENSURE PROPER LOCATION. THEN DRILL A 7/32" DIA. HOLE.
  - 4.2 POSITION THE SPLASH GUARD AGAINST THE WHEEL WELL MOLDING AND INSTALL (2) 10-24 X 1.0" PHILLIPS TRUSS SCREWS WITH FENDER WASHERS (ITEMS #5,7) THRU THE (2) LOWER HOLES AS SHOWN IN FIG. 3. TIGHTEN DOWN WITH THE (2) HEX FLANGE NUTS (ITEM#8).
  - 4.3 WITH THE SPLASHGUARD LEVELED AND TIGHTENED, DRILL A 3/16" HOLE THROUGH THE WHEEL WELL FLANGE AND INSTALL THE 1/4" SELF TAPPING SCREW AND FENDER WASHER (ITEMS #6,7) DO NOT OVER TIGHTEN THIS SCREW.
  - 4.4 REPEAT FOR OPPOSITE SIDE.



SERVICE PARTS LIST

MODEL NO. - 251440/251443

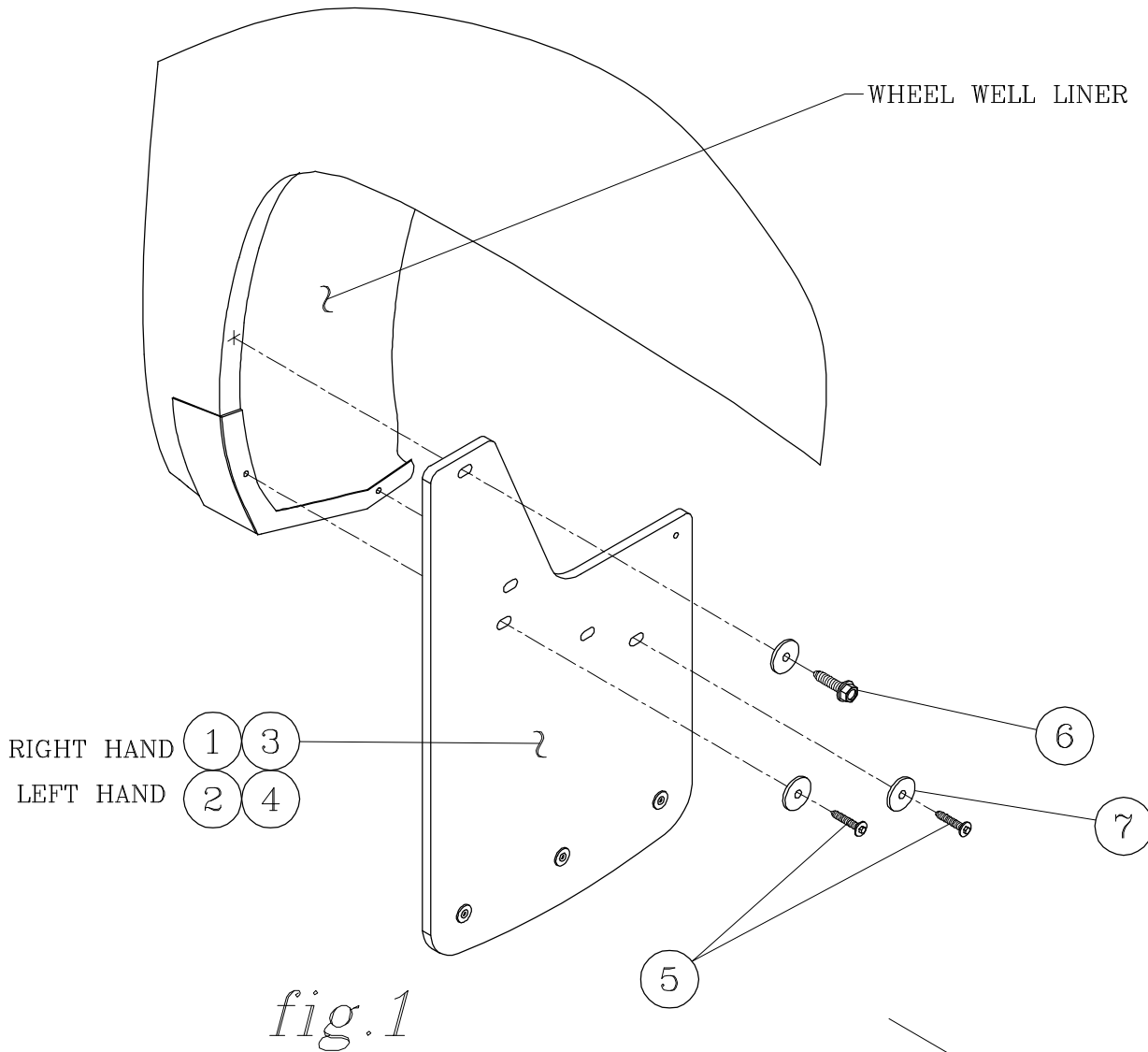


fig.1

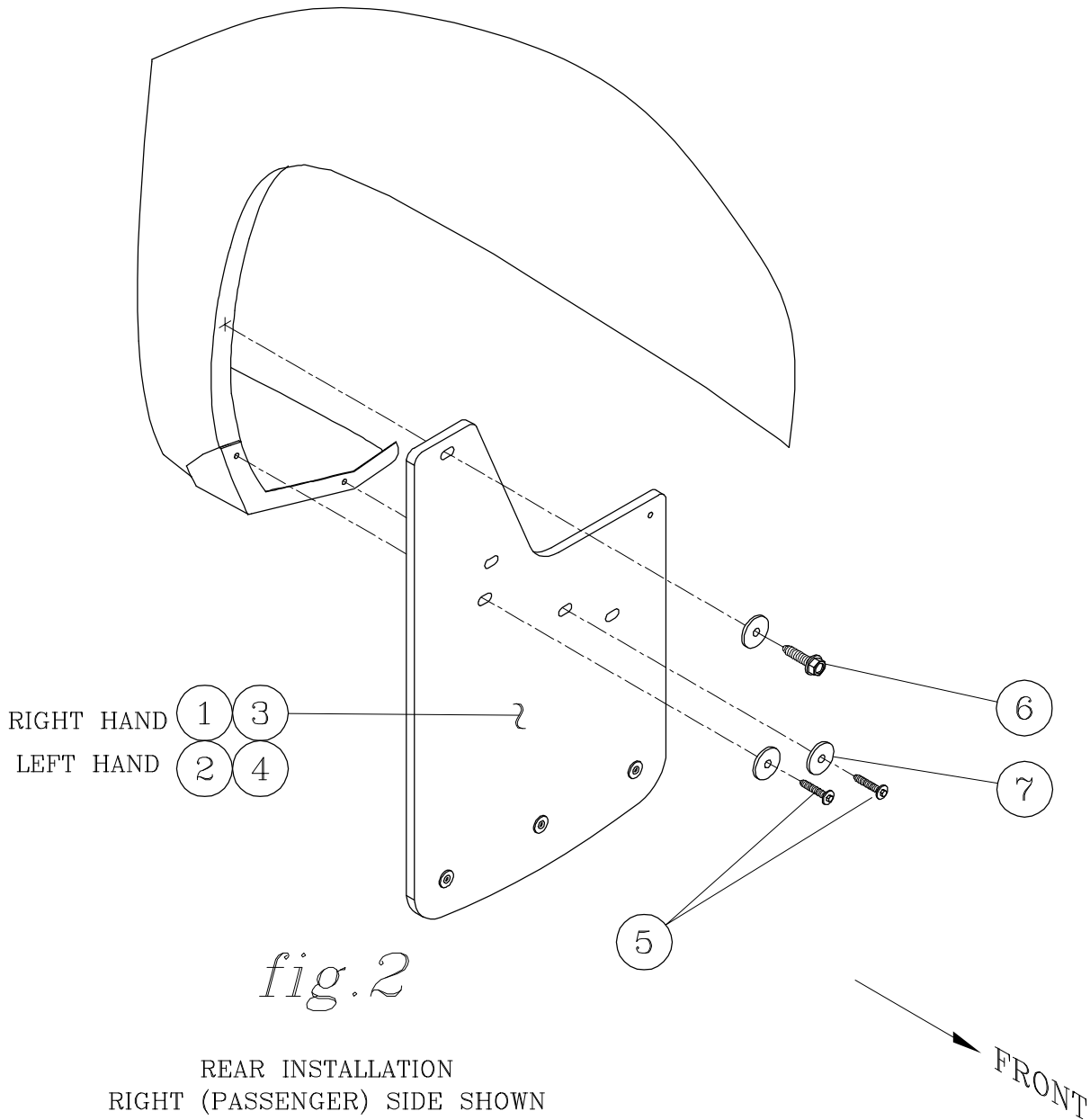
FRONT INSTALLATION  
RIGHT (PASSENGER) SIDE SHOWN

ITEM	PART NO.	QTY	DESCRIPTION
1	552309	1	SPLASH GUARD-RUBBER,12 X 20,GM PICKUPS,RH
2	552310	1	SPLASH GUARD-RUBBER,12 X 20,GM PICKUPS,LH
3	552311	1	SPLASH GUARD-RUBBER,12 X 23,GM PICKUPS,RH
4	552312	1	SPLASH GUARD-RUBBER,12 X 23,GM PICKUPS,LH
5	105514	4	SCREW - SEMS, 7MM, HEX HD, M4.2 X 30MM
6	108449	2	SCREW-HEX, SELF TAP, 14-1.0, SST
7	108521	6	WASHER - FENDER, 1/4 X 1, SST, 18-8, BZP



SERVICE PARTS LIST

MODEL NO. - 251440/251443



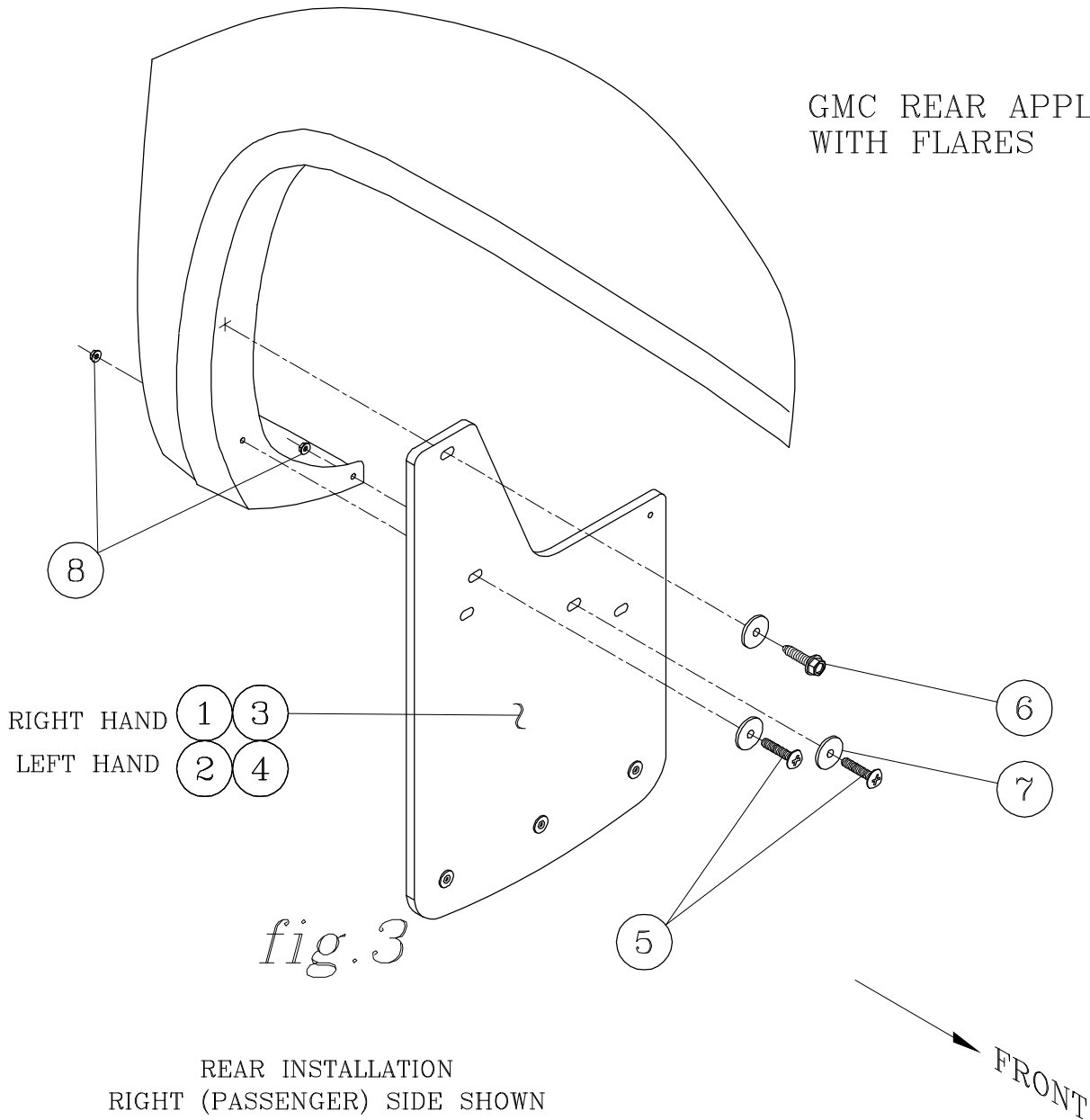
ITEM	PART NO.	QTY	DESCRIPTION
1	552309	1	SPLASH GUARD-RUBBER,12 X 20,GM PICKUPS,RH
2	552310	1	SPLASH GUARD-RUBBER,12 X 20,GM PICKUPS,LH
3	552311	1	SPLASH GUARD-RUBBER,12 X 23,GM PICKUPS,RH
4	552312	1	SPLASH GUARD-RUBBER,12 X 23,GM PICKUPS,LH
5	105514	4	SCREW - SEMS, 7MM, HEX HD, M4.2 X 30MM
6	108449	2	SCREW-HEX, SELF TAP, 14-1.0, SST
7	108521	6	WASHER - FENDER, 1/4 X 1, SST, 18-8, BZP



SERVICE PARTS LIST

MODEL NO. - 251440/251443

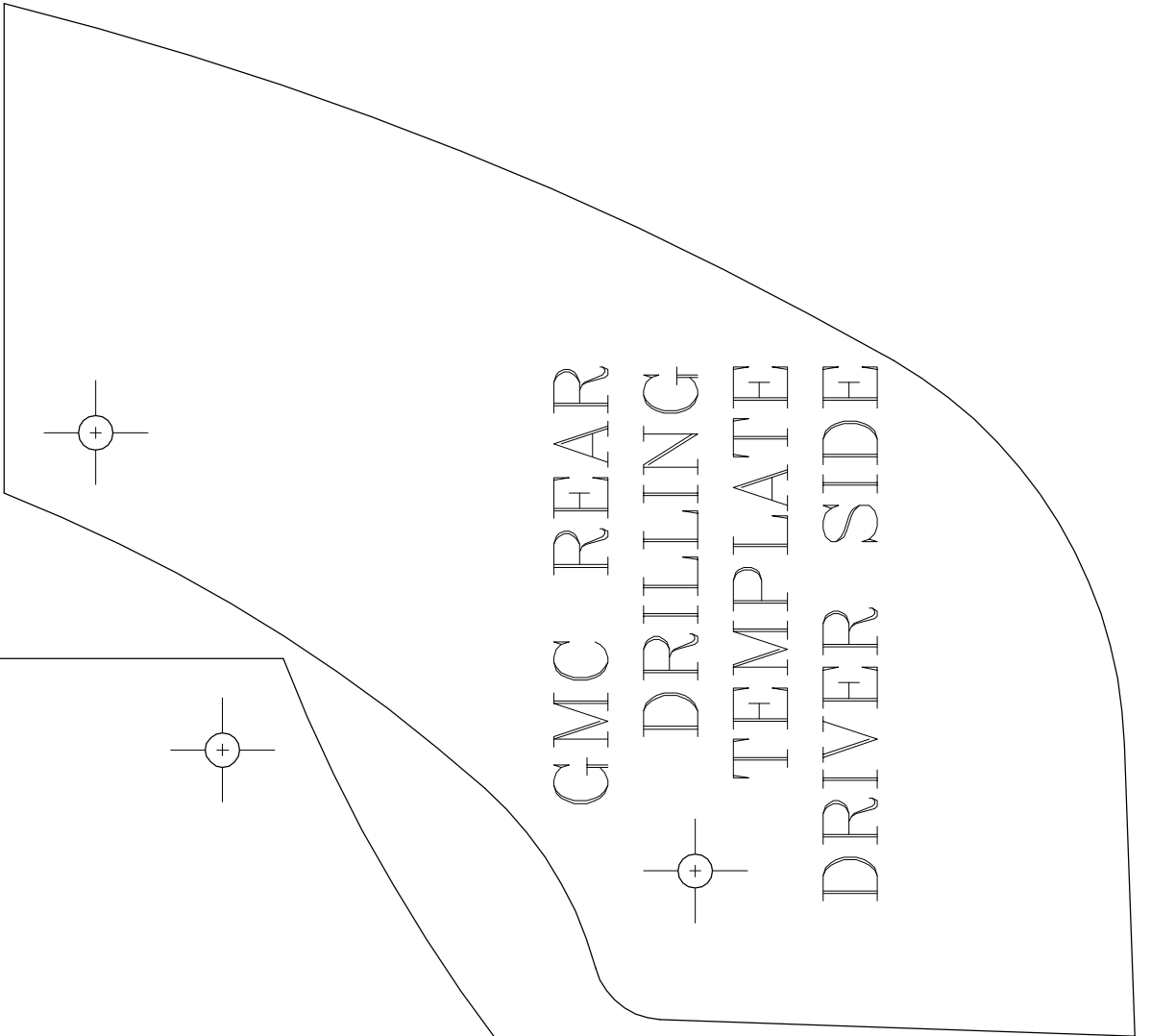
GMC REAR APPLICATION  
WITH FLARES



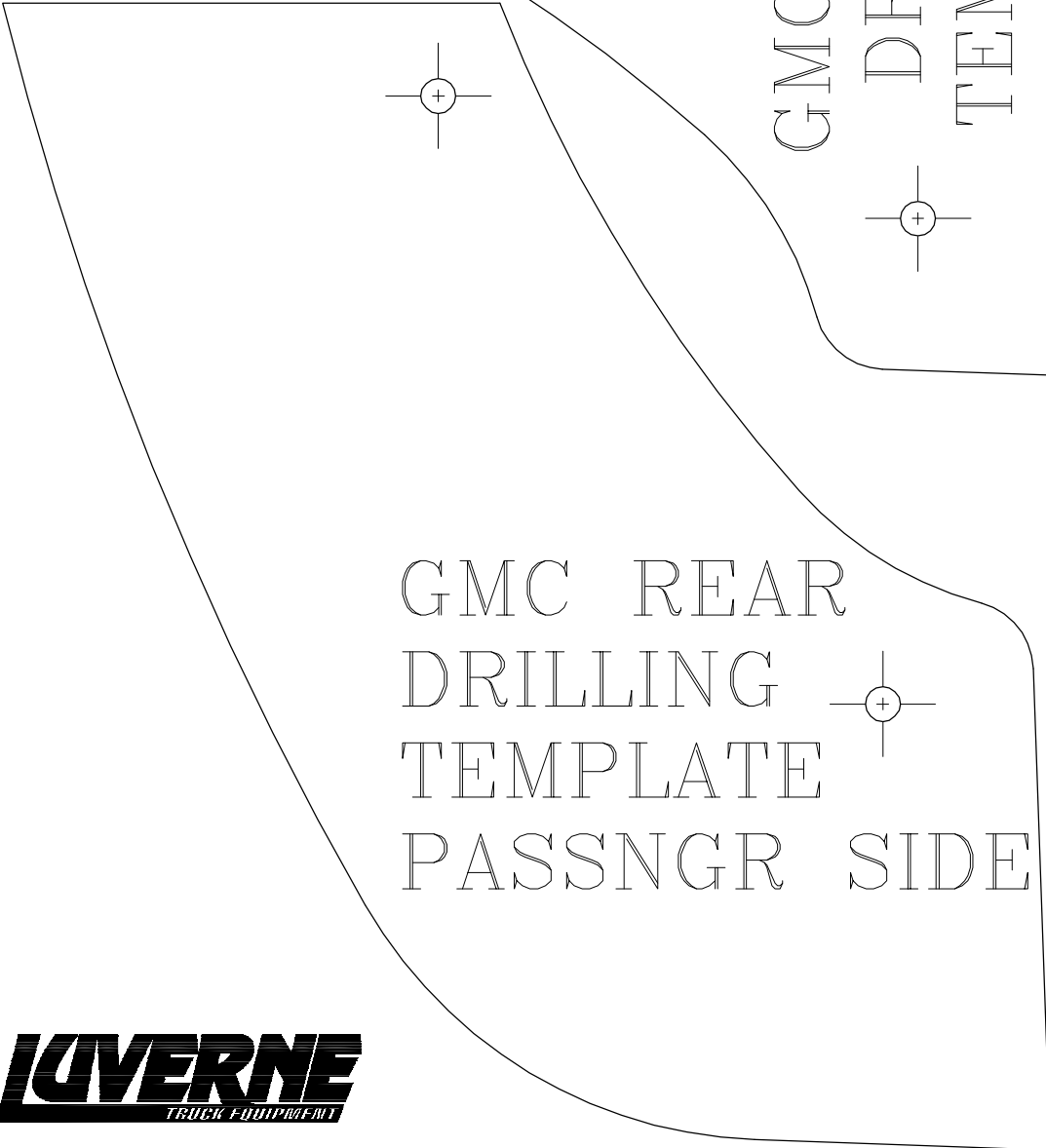
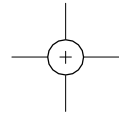
REAR INSTALLATION  
RIGHT (PASSENGER) SIDE SHOWN

ITEM	PART NO.	QTY	DESCRIPTION
1	552309	1	SPLASH GUARD-RUBBER,12 X 20,GM PICKUPS,RH
2	552310	1	SPLASH GUARD-RUBBER,12 X 20,GM PICKUPS,LH
3	552311	1	SPLASH GUARD-RUBBER,12 X 23,GM PICKUPS,RH
4	552312	1	SPLASH GUARD-RUBBER,12 X 23,GM PICKUPS,LH
5	105516	4	SCREW - TRUSS HEAD, 10-2 X 1.0", SST
6	108449	2	SCREW-HEX, SELF TAP, 14-1.0, SST
7	108521	6	WASHER - FENDER, 1/4 X 1, SST, 18-8, BZP
8	104261	4	NUT-SER FLANGE, 10-24, SST





GMC REAR  
DRILLING  
TEMPLATE  
DRIVER SIDE



GMC REAR  
DRILLING  
TEMPLATE  
PASSNGR SIDE

