

INSTALLATION MANUAL

495154

This is the second of two manuals required to complete this installation. The first manual is included with your mounting brackets.

Level of Difficulty

Easy

Installation difficulty levels are based on time and effort involved and may vary depending on the installer level of expertise, condition of the vehicle and proper tools and equipment.

Parts List

Qty	Description
1	Grip Step™ XL running board
3	Clamping bracket
6	Carriage bolt, 5/16" - 18 x 1"
6	Nylock nut, 5/16" - 18

Tools Required

Ratchet	Socket, 1/2"
---------	--------------

Torque Specifications

5/16 bolt	10 ft-lbs.
-----------	------------

Use above torque setting unless otherwise noted

Product Photo



NOTICE

Before you begin installation, read all instructions thoroughly.

Proper tools will improve the quality of installation and reduce the time required.

Periodic inspection of your product should be performed to ensure all hardware and / or components remain secure.

To help prevent damage to the product or vehicle, refer to the specified torque specifications when securing hardware during the installation process.

Maintenance

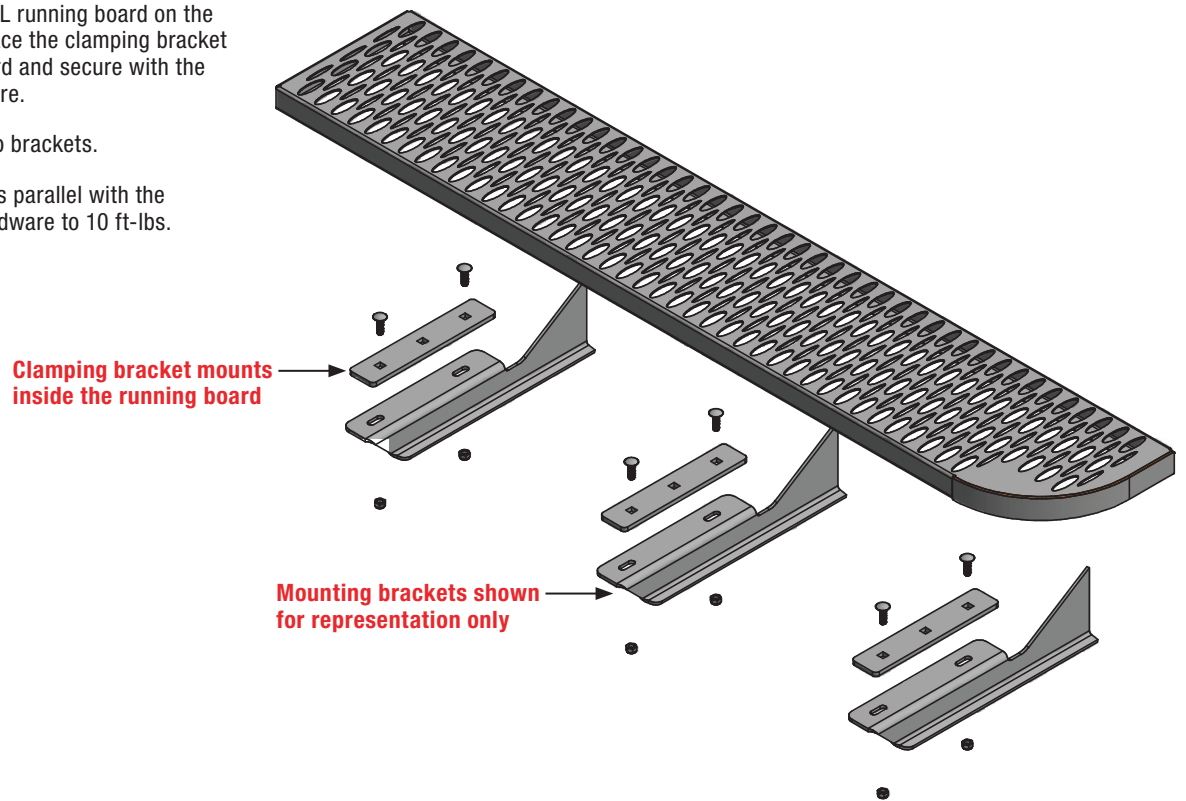
Mild automotive detergent may be used to clean the product. Do not use dish detergent, abrasive cleaners, abrasive pads, wire brushes or other similar products that may damage the finish.

Step 1

Place the Grip Step™ XL running board on the mounting brackets. Place the clamping bracket inside the running board and secure with the provided 5/16" hardware.

Repeat for the next two brackets.

Adjust the board so it is parallel with the vehicle. Tighten all hardware to 10 ft-lbs.



INSTALLATION MANUAL

401801

This is the first of two manuals required to complete this installation. The second manual is included with your side bars / running boards.

Level of Difficulty

Easy

Parts List

2	Front mounting bracket
1	Rear mounting bracket
1	Thread forming screw, 3/8"
3	Bolt retainer
7	Flat washer, 5/16"
4	Lock nut, M8
3	T-bolt, M8
3	Hex nut, M8
3	Lock washer, M8

Tools Required

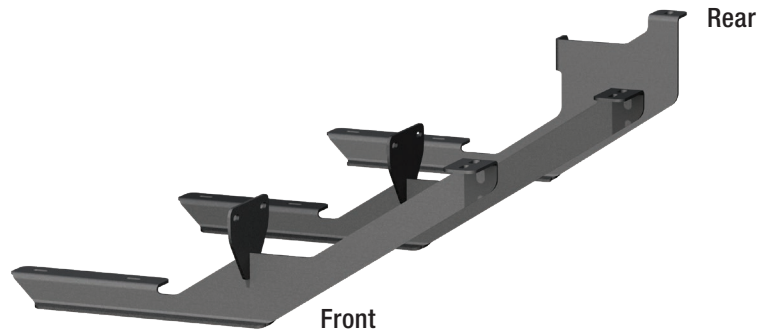
Ratchet	Torque wrench
Socket set	Wrench set
Socket extension	--

Torque Specifications

3/8" bolt	25 ft-lbs.
M8 bolt	20 ft-lbs.

Use above torque setting unless otherwise noted

Product Photo



NOTICE

Before you begin installation, read all instructions thoroughly.

Proper tools will improve the quality of installation and reduce the time required.

To help prevent damage to the product or vehicle, refer to the specified torque specifications when securing hardware during the installation process.

Maintenance

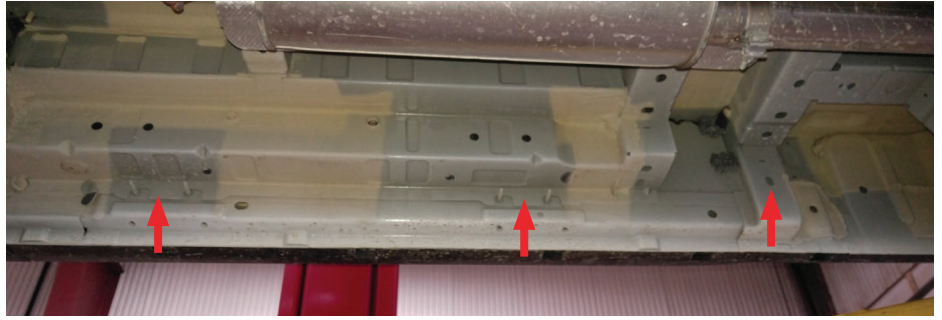
To protect the product, wax after installing. Regular waxing is recommended to add a protective layer over the finish. Do not use any type of polish or wax that may contain abrasives that could damage the finish.

For polished, gloss and other smooth finishes, polish may be used to clear small scratches and scuffs on the finish.

Mild automotive detergent may be used to clean the product. Do not use dish detergent, abrasive cleaners, abrasive pads, wire brushes or other similar products that may damage the finish.

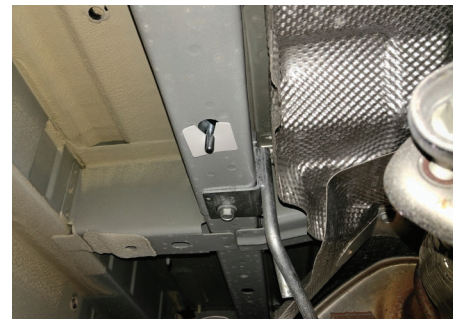
Step 1

Locate the three mounting locations on the passenger side of the vehicle.



Step 2

Insert a T-bolt into the frame of the vehicle at the first mounting location and secure with a bolt retainer.



Step 3

Slide the first mounting bracket over the studs in the rocker panel and the T-bolt from step 1. Secure the bracket to the studs with two flat washers and M8 lock nuts. Secure the bracket assemblies to the T-bolt with a 5/16" flat washer, M8 lock washer and an M8 nut.



Step 4

Slide the second mounting bracket over the studs in the rocker panel. Align the rear hole of the bracket over the non-threaded insert in the frame of the vehicle and attach using the 3/8" thread forming screw.

Secure the bracket to the studs using two 5/16" flat washers and M8 lock nuts.



Step 1

Insert a T-bolt into each of the rear mounting locations and secure with a bolt retainer.



Step 6

Attach the rear mounting bracket using two 5/16" flat washers, M8 lock washers and M8 nuts. Adjust the bracket so that it is level and parallel with the front two mounting brackets. Tighten all hardware to the recommended torque specifications listed on page one.

NOTICE

To complete the installation, refer to the manual included with your running boards / side steps.

