

INSTALLATION MANUAL

495154

This is the second of two manuals required to complete this installation. The first manual is included with your mounting brackets.

Level of Difficulty

Easy

Installation difficulty levels are based on time and effort involved and may vary depending on the installer level of expertise, condition of the vehicle and proper tools and equipment.

Parts List

Qty	Description
1	Grip Step™ XL running board
3	Clamping bracket
6	Carriage bolt, 5/16" - 18 x 1"
6	Nylock nut, 5/16" - 18

Tools Required

Ratchet	Socket, 1/2"
---------	--------------

Torque Specifications

5/16 bolt	10 ft-lbs.
-----------	------------

Use above torque setting unless otherwise noted

Product Photo



NOTICE

Before you begin installation, read all instructions thoroughly.

Proper tools will improve the quality of installation and reduce the time required.

Periodic inspection of your product should be performed to ensure all hardware and / or components remain secure.

To help prevent damage to the product or vehicle, refer to the specified torque specifications when securing hardware during the installation process.

Maintenance

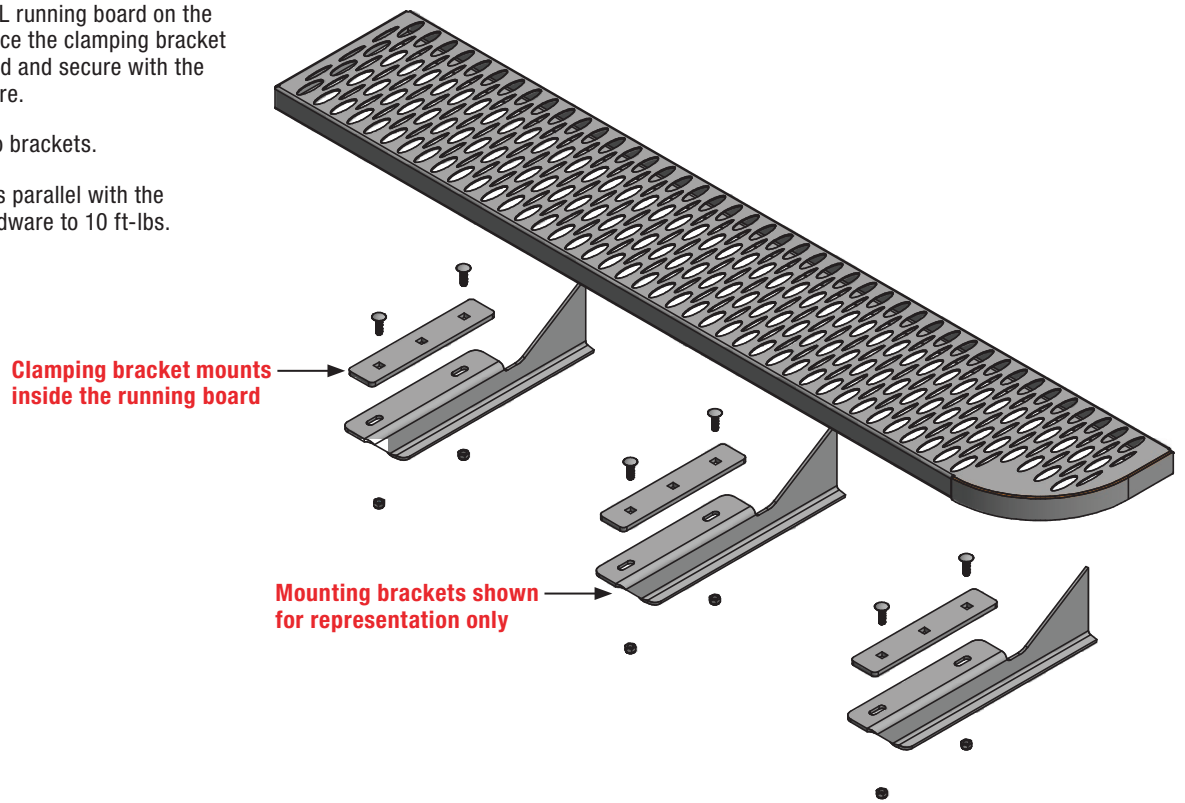
Mild automotive detergent may be used to clean the product. Do not use dish detergent, abrasive cleaners, abrasive pads, wire brushes or other similar products that may damage the finish.

Step 1

Place the Grip Step™ XL running board on the mounting brackets. Place the clamping bracket inside the running board and secure with the provided 5/16" hardware.

Repeat for the next two brackets.

Adjust the board so it is parallel with the vehicle. Tighten all hardware to 10 ft-lbs.



This is the first of two manuals required to complete this installation. The second manual is included with your side bars / running boards.

Level of Difficulty

Moderate

Installation difficulty levels are based on time and effort involved and may vary depending on the installer level of expertise, condition of the vehicle and proper tools and equipment.

Parts List

Qty	Description
3	Mounting bracket, universal
3	Rocker support bracket
14	Hex bolt, M8 x 30mm
2	Lock washer, M8
2	Nut plate, M8
23	Flat washer, M8
15	Nylock nut, M8
3	T-bolt, M8 x 30mm
3	Self-threading screw, 5/16"
3	Bolt retainer

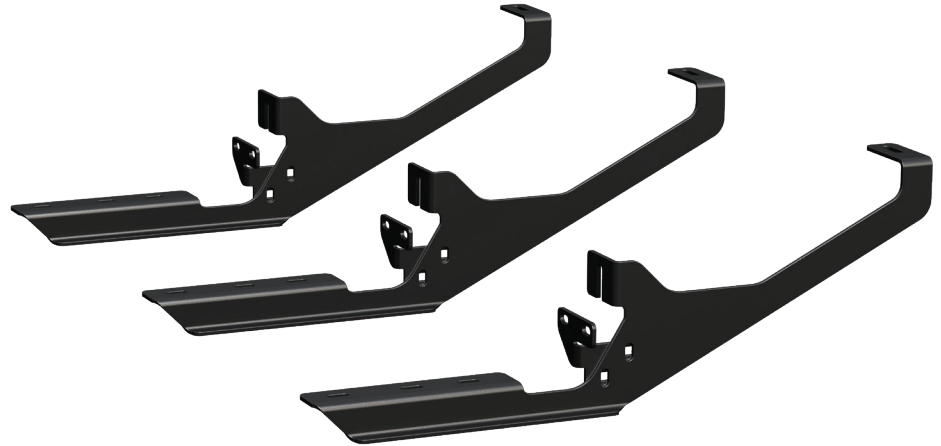
Tools Required

Ratchet	Drill
Torque wrench	Drill bit, 1/8"
Socket extension	Drill bit, 3/8"
Socket, 13mm	Drill bit, 17/64"
Marker	Flathead screwdriver

Torque Specifications

M8 bolt	20 ft-lbs.
Use above torque setting unless otherwise noted	

Product Photo



NOTICE

Before you begin installation, read all instructions thoroughly.

Proper tools will improve the quality of installation and reduce the time required.

Periodic inspection of your product should be performed to ensure all hardware and / or components remain secure.

To help prevent damage to the product or vehicle, refer to the specified torque specifications when securing hardware during the installation process.

Maintenance

Mild automotive detergent may be used to clean the product. Do not use dish detergent, abrasive cleaners, abrasive pads, wire brushes or other similar products that may damage the finish.

Step 1

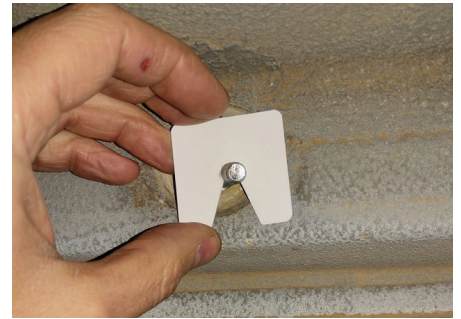
Locate the three mounting locations and remove the rubber plugs from the rocker panel.

Note: It may be necessary to scrape off the underbody coating in these areas so the bracket can sit flat against the rocker panel and frame of the vehicle.



Step 2

Starting at the front location, insert a T-bolt into the rocker panel and secure with the bolt retainer.



Step 3

Insert an M8 nut plate into the frame of the vehicle.



Step 4

Attach a mounting bracket to the rocker panel using an M8 flat washer and nylock nut. Attach to the frame using an M8 bolt, lock washer and flat washer. Leave loose at this time.

Note: Due to variations between years, wheelbases and configurations, if the frame end of the bracket does not line up with an existing hole refer to Step 6 for attachment method.

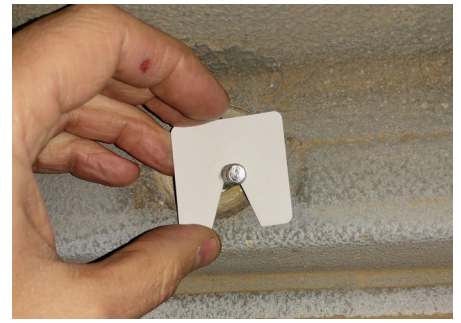
Repeat for the second mounting bracket.



Step 5

Insert a T-bolt and bolt retainer in the third mounting location and attach the bracket to the rocker panel using an M8 flat washer and nylock nut. Leave loose at this time.

On the frame end of the bracket, locate and mark a drill location. Drill a pilot hole using a 1/8" drill bit. Enlarge the hole using a 17/64" drill bit. Attach the bracket to the frame using a 5/16" self-threading screw. **Note:** Due to the thin sheet metal in this area be careful not to over tighten this screw.



Step 6

Attach the rocker support bracket to the main bracket using two M8 bolts, four flat washers and two nylock nuts.



Step 7

Align the rocker support bracket on the pinch weld. Locate and mark a drill location. Drill a pilot hole using a 1/8" drill bit and enlarge using a 3/8" drill bit.

WARNING

Do not drill through the welds in the pinch weld. Adjust the bracket or your drill locations forward or rearward to move the drilled holes away from the factory spot welds. Do not drill into or through the outer plastic rocker panel cover.

Secure the bracket with two M8 bolts, four flat washers, and two nylock nuts.



Step 8

Adjust all brackets so that they are level and tighten all hardware to 20 ft-lbs.

NOTICE

To complete the installation, refer to the manual included with your running boards / side steps.