

INSTALLATION MANUAL

4055124

Level of Difficulty

Easy

Parts List

1	Driver / left running board*
1	Passenger / right running board*
6	VersaTrac™ mounting bracket, universal
12	Hex bolt, M8 (B)
12	Flat washer, M8 (B)
12	Lock washer, M8 (B)
12	Hex nut, M8 (B)
12	Clip nut, M10
24	Hex bolt, M10 (S)
36	Flat washer, M10 (S)
24	Lock washer, M10 (S)
12	Hex nut, M10 (S)

(S) = Silver hardware

(B) = Black hardware

*Running boards sold separately

Tools Required

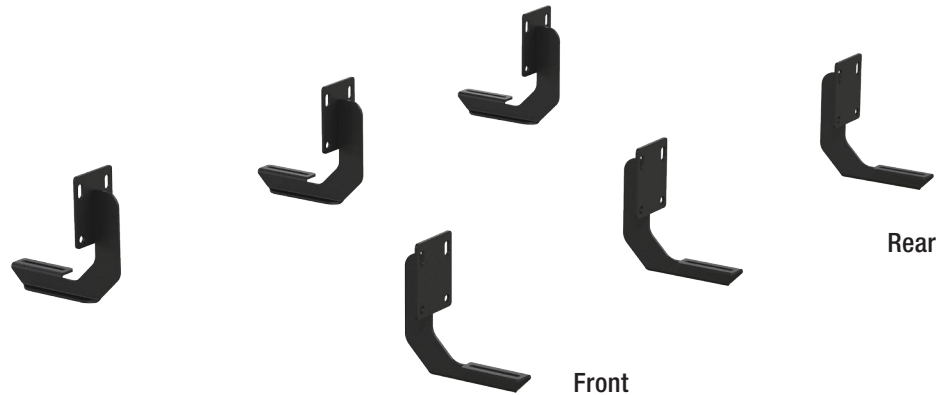
Ratchet	Level
Torque wrench	Socket set

Torque Specifications

	Metric	SAE	Torque
	M6 bolt		3 ft-lbs.
	M8 bolt		7 ft-lbs.
	M10 bolt		16 ft-lbs.
	M12 bolt		28 ft-lbs.
	1/4" bolt		3 ft-lbs.
	5/16" bolt		7 ft-lbs.
	3/8" bolt		16 ft-lbs.
	7/16" bolt		20 ft-lbs.
	1/2" bolt		28 ft-lbs.

Use above torque setting unless otherwise noted

Product Photo



SlimGrip™ (not included)



Notes and Maintenance

Before you begin installation, read all instructions thoroughly.

Proper tools will improve the quality of installation and reduce the time required.

To protect the product, wax after installing. Regular waxing is recommended to add a protective layer over the finish. Do not use any type of polish or wax that may contain abrasives that could damage the finish.

For polished, gloss and other smooth finishes, polish may be used to clear small scratches and scuffs on the finish.

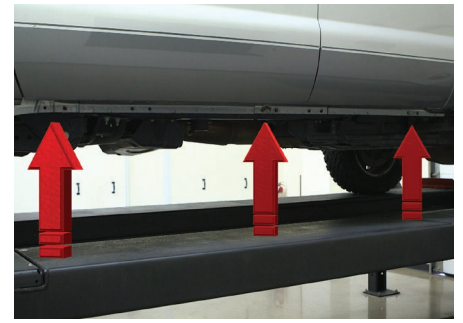
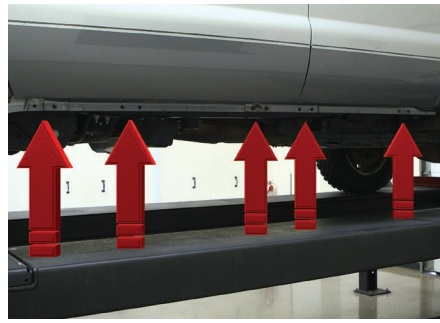
Mild automotive detergent may be used to clean the product. Do not use dish detergent, abrasive cleaners, abrasive pads, wire brushes or other similar products that may damage the finish.

Refer to the table to the left when securing hardware during the installation process to help prevent damage to the product or vehicle.

Step 1

Starting on the driver side, locate the five mounting tabs along the bottom edge of the vehicle.

This installation will use the first, third and fifth mounting tabs.



Step 2

Starting at the front driver-side mounting location, insert an M10 clip nut into the square hole and align it over the adjacent round hole.

Place a bracket onto the vehicle and secure with an M10 hex bolt, lock washer and flat washer.

Snug the hardware, but do not fully tighten.



Step 3

Finish securing the front mounting bracket to the vehicle using an M10 hex bolt and flat washer from the outside of the bracket and an M10 hex nut, lock washer and flat washer on the inside.

Repeat this step for the remaining bottom bolt location.



Step 4

Locate the middle bracket mounting tab and insert two M10 clip nuts and align them with the adjacent round holes.

Place a bracket onto the vehicle and secure with two M10 hex bolts, two lock washers and two flat washers on the top mounting locations.

Finish securing the middle mounting bracket to the vehicle using two M10 hex bolts and two flat washers from the outside of the bracket and two M10 hex nuts, two lock washers and two flat washers on the inside.



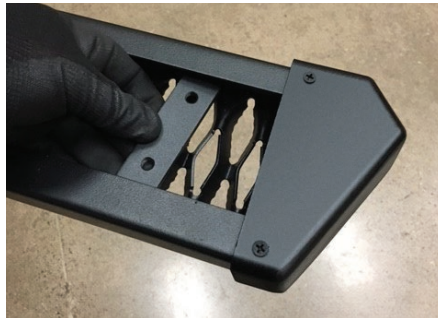
Step 5

Repeat steps 2 and 3 to install the rear bracket over the mounting tab location from step 1.



Step 6

Slide the three track mounting brackets into the bottom side of the SlimGrip™ board.



Step 7

Carefully place the running board onto the mounting brackets.

Align the track mounting brackets with the mounting brackets on the vehicle.

Attach the track mounting brackets to the mounting brackets using black M8 hex bolts, hex nuts, lock washers and flat washers.



Step 8

At this time, adjust the running board to the desired location.

With the running board in position, it is recommended to tighten all brackets to the vehicle first, followed by the running board connections.

For recommended torque specifications, refer to the table on page one.



Step 9

Repeat steps 1 through 8 on the passenger side of the vehicle.

Congratulations on the installation of your new SlimGrip™ running boards.

With the running boards installed, periodic inspections should be performed to ensure all mounting hardware remains tight.

To protect your investment, see the 'Notes and Maintenance' section on the second page of this instruction manual.

