

INSTALLATION MANUAL

4055121

Level of Difficulty

Easy

Parts List

1	Driver / left running board*
1	Passenger / right running board*
6	VersaTrac™ mounting bracket, universal
18	Flat washer, M8 (S)
18	Lock nut, M8 (S)
12	Hex bolt, M8 (B)
12	Flat washer, M8 (B)
12	Lock washer, M8 (B)
12	Hex nut, M8 (B)
18	Nylon flat washer, M8

(S) = Silver hardware

(B) = Black hardware

*Running boards sold separately

Tools Required

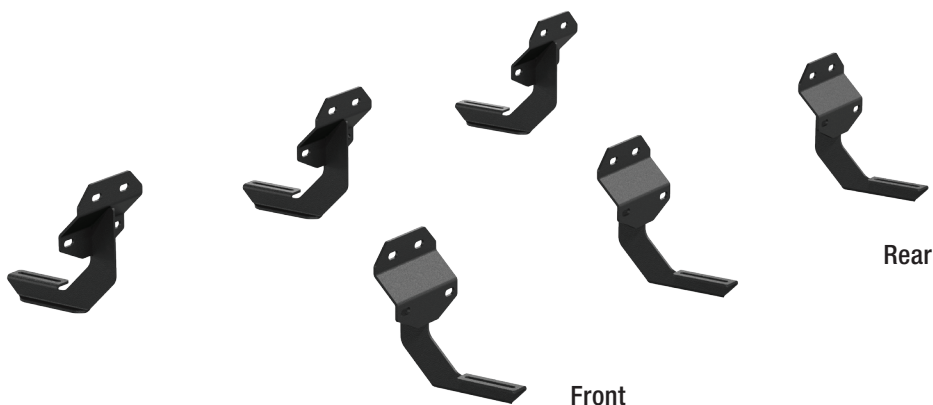
Ratchet	Socket set
Torque wrench	Socket extension
Level	

Torque Specifications

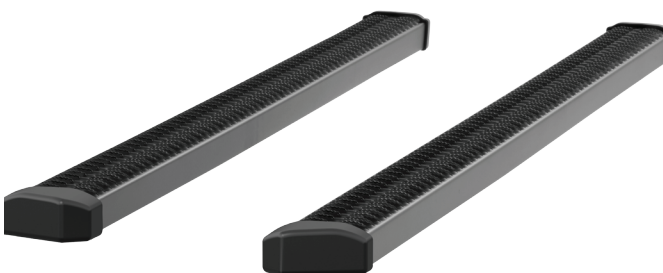
	Metric	SAE	
	M6 bolt		3 ft.-lbs.
	M8 bolt		7 ft.-lbs.
	M10 bolt		16 ft.-lbs.
	M12 bolt		28 ft.-lbs.
	1/4" bolt		3 ft.-lbs.
	5/16" bolt		7 ft.-lbs.
	3/8" bolt		16 ft.-lbs.
	7/16" bolt		20 ft.-lbs.
	1/2" bolt		28 ft.-lbs.

Use above torque setting unless otherwise noted

Product Photo



SlimGrip™ (not included)



Notes and Maintenance

Before you begin installation, read all instructions thoroughly.

Proper tools will improve the quality of installation and reduce the time required.

To protect the product, wax after installing. Regular waxing is recommended to add a protective layer over the finish. Do not use any type of polish or wax that may contain abrasives that could damage the finish.

For polished, gloss and other smooth finishes, polish may be used to clear small scratches and scuffs on the finish.

Mild automotive detergent may be used to clean the product. Do not use dish detergent, abrasive cleaners, abrasive pads, wire brushes or other similar products that may damage the finish.

Refer to the table to the left when securing hardware during the installation process to help prevent damage to the product or vehicle.

Step 1

Starting on the driver side, locate the three mounting tabs along the bottom edge of the vehicle body.



Step 2

Starting at the front driver-side mounting location, locate the three threaded bolts on the inside of the body panel.

Before attaching the bracket, place a nylon flat washer on each of the threaded bolts to prevent any galvanic corrosion.

Attach the bracket to the body panel using a silver M8 flat washer and lock nut.

Snug the hardware, but do not fully tighten.



Step 3

Repeat step 2 to install the second and third bracket over the rear mounting tab location from step 1.



Step 4

Slide the three track mounting brackets into the bottom side of the SlimGrip™ board



Step 5

Carefully place the running board onto the mounting brackets.

Align the track mounting brackets with the mounting brackets on the vehicle.



Step 6

Attach the track mounting brackets to the mounting brackets using black M8 hex bolts, hex nuts, lock washers and flat washers.



Step 7

At this time, adjust the running board to the desired location.

With the running board in position, it is recommended to tighten all brackets to the vehicle first, followed by the running board connections.

For recommended torque specifications, refer to the table on page one.



Step 8

Repeat steps 1 through 7 on the passenger side of the vehicle.

Congratulations on the installation of your new SlimGrip™ running boards.

With the running boards installed, periodic inspections should be performed to ensure all mounting hardware remains tight.

To protect your investment, see the 'Notes and Maintenance' section on the first page of this instruction manual.

