

# INSTALLATION MANUAL

## 4055120

### Level of Difficulty

Easy

### Parts List

1	Driver / left running board*
1	Passenger / right running board*
4	VersaTrac™ mounting bracket, universal
8	Clip nut
16	Hex bolt, M8 (S)
16	Flat washer, M8 (S)
16	Lock washer, M8 (S)
8	Hex nut, M8 (S)
8	Hex bolt, M8 (B)
8	Flat washer, M8 (B)
8	Lock washer, M8 (B)
8	Hex nut, M8 (B)

(S) = Silver hardware

(B) = Black hardware

\*Running boards sold separately

### Tools Required

Ratchet	Socket set
Torque wrench	Socket extension
Level	

### Torque Specifications

	Metric	SAE
	M6 bolt	3 ft-lbs.
	M8 bolt	7 ft-lbs.
	M10 bolt	16 ft-lbs.
	M12 bolt	28 ft-lbs.
	1/4" bolt	3 ft-lbs.
	5/16" bolt	7 ft-lbs.
	3/8" bolt	16 ft-lbs.
	7/16" bolt	20 ft-lbs.
	1/2" bolt	28 ft-lbs.

Use above torque setting unless otherwise noted

### Product Photo



### SlimGrip™ (not included)



### Notes and Maintenance

Before you begin installation, read all instructions thoroughly.

Proper tools will improve the quality of installation and reduce the time required.

To protect the product, wax after installing. Regular waxing is recommended to add a protective layer over the finish. Do not use any type of polish or wax that may contain abrasives that could damage the finish.

For polished, gloss and other smooth finishes, polish may be used to clear small scratches and scuffs on the finish.

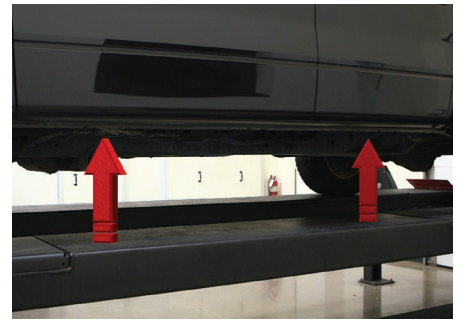
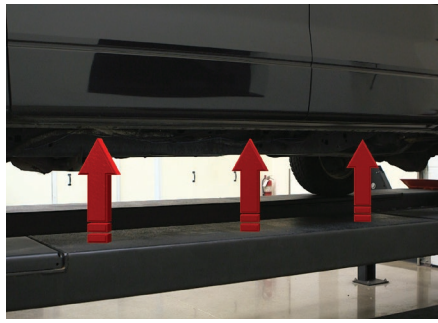
Mild automotive detergent may be used to clean the product. Do not use dish detergent, abrasive cleaners, abrasive pads, wire brushes or other similar products that may damage the finish.

Refer to the table to the left when securing hardware during the installation process to help prevent damage to the product or vehicle.

### Step 1

Starting on the driver side, locate the three mounting tabs along the bottom edge of the vehicle body.

The installation will use the first and third mounting tabs



### Step 2

Starting at the front driver-side mounting location, insert two M8 clip nuts into the rectangular hole and align them over the adjacent round holes.

Place a bracket onto the vehicle and secure the top portion with two silver M8 hex bolts, lock washers and flat washers.

Snug the hardware, but do not fully tighten.



### Step 3

Finish securing the front mounting bracket to the vehicle by inserting two silver M8 hex bolts and flat washers from the bottom side of the bracket and secure with two silver M8 lock washers, flat washers and hex nuts on the top side.



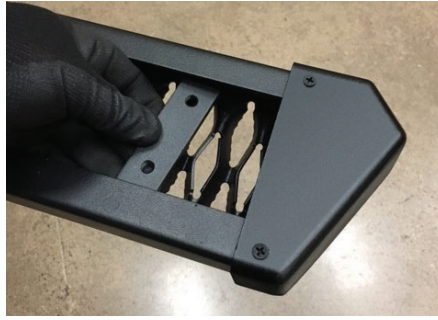
### Step 4

Repeat steps 2 and 3 to install the rear bracket over the second mounting tab location from step 1.



### Step 5

Slide the two track mounting brackets into the bottom side of the SlimGrip™ board



### Step 6

Carefully place the running board onto the mounting brackets.

Align the track mounting brackets with the mounting brackets on the vehicle.



### Step 7

Attach the track mounting brackets to the mounting brackets on the vehicle using black M8 hex bolts, hex nuts, lock washers and flat washers.



### Step 8

At this time, adjust the running board to the desired location.

With the running board in position, it is recommended to tighten all brackets to the vehicle first, followed by the running board connections.

For recommended torque specifications, refer to the table on page one.



## Step 9

Repeat steps 1 through 8 on the passenger side of the vehicle.

Congratulations on the installation of your new SlimGrip™ running boards.

With the running boards installed, periodic inspections should be performed to ensure all mounting hardware remains tight.

To protect your investment, see the 'Notes and Maintenance' section on the first page of this instruction manual.

